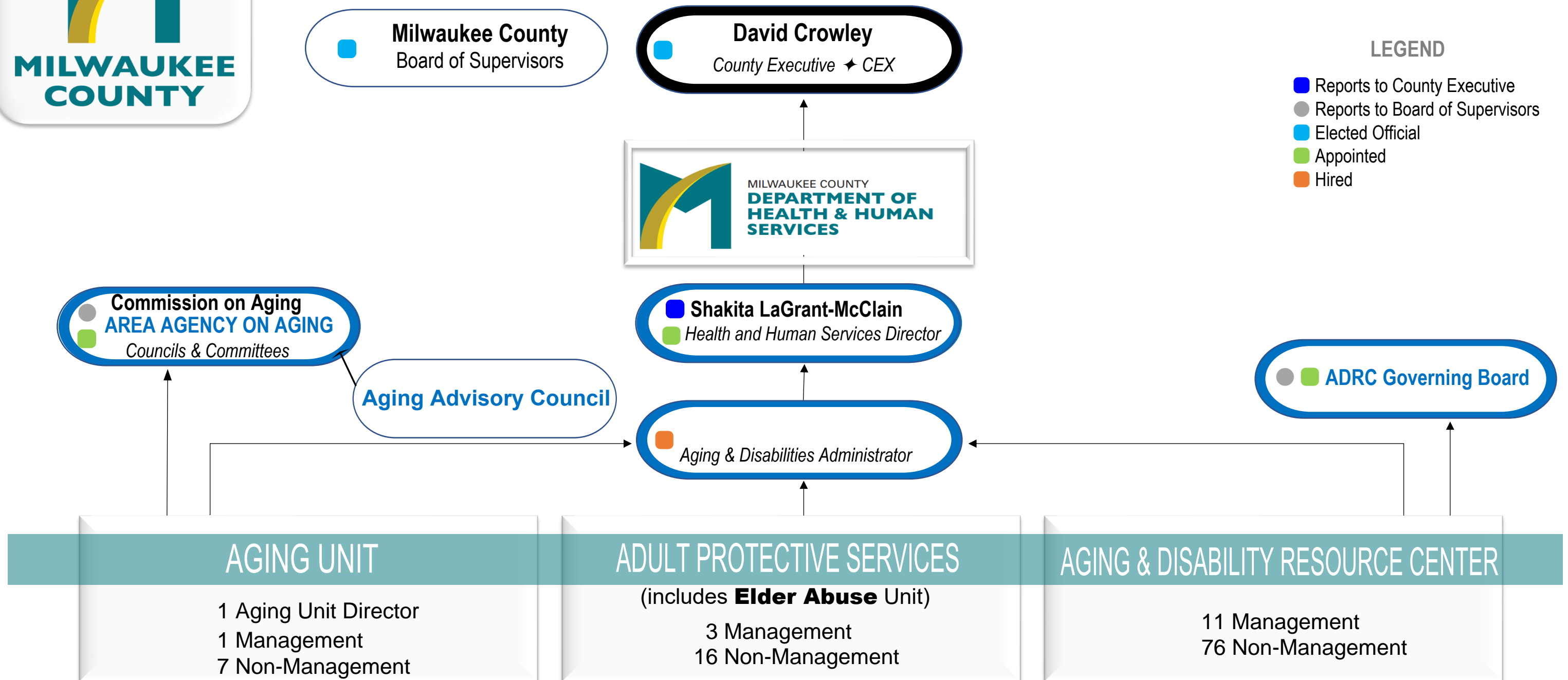




ORGANIZATIONAL CHART



NOTES

- County Board confirms all Commission on Aging appointments.
- County Exec has sole authority to appoint/remove Commissioners.
- Commission on Aging and DHHS must submit an activity report to the County Board annually.

- OAA funded contracts require approval of the Commission on Aging and the County Board depending upon the contract value.
- CEX appoints DHHS Director. County Board confirms the appointment.
- The Aging Unit Director reports to the Aging and Disabilities Services Administrator.
- DHHS submits budget request materials to County Budget Office. CEX proposes annual budget. County Board adopts annual budget.

Revised: November 9, 2021



TITLE III—FUNDED SERVICES

FUNDING	SERVICE	VENDOR	STAFF	STAFF TITLE
TITLE III-B	Coordination of Neighborhood Services	Eras Senior Network	Jill Knight	Program Coordinator
	Family Support for Older Adults and People with Disabilities	Life Navigators	Jill Knight	Program Coordinator
	Late Life Counseling	Jewish Family Services	Jill Knight	Program Coordinator
	Benefit Specialist and Legal Services	Legal Action of Wisconsin	Dan Idzikowski	Program and Policy Coordinator
	Outreach and Translation Services for Southeast Asian Seniors	Hmong American Friendship Association	Jill Knight	Program Coordinator
	Outreach and Access Services for Southeast Asian Elderly	Milwaukee Christian Center	Gaylyn Reske	Senior Dining Program Coordinator
	Outreach and Services to LGBT Elderly	LGBT Community Center	Jill Knight	Program Coordinator
	Programs in United Community Center Senior Center	United Community Center	Gaylyn Reske	Senior Dining Program Coordinator
	Services to Native American Elderly	Indian Council of the Elderly	Gaylyn Reske	Senior Dining Program Coordinator
	Socialization Activities for Older Adults--53206 ZIP Code	Greater Galilee	Jill Knight	Program Coordinator
	Specialized Transportation	First Transit	Alena DeGrado	Transportation Coordinator
	Telephone Reassurance Program	Vital Voices	Jill Knight	Program Coordinator
	Transportation to the United Community Center	United Community Center	Alena DeGrado	Transportation Coordinator
FUNDING	SERVICE	VENDOR	STAFF	STAFF TITLE
TITLE III-C	Nutrition Site Supervision: 5 County-Owned Senior Centers	Serving Older Adults of Southeastern Wisconsin	Gaylyn Reske	Senior Dining Program Coordinator
	Catering Service: Congregate and Home-Delivered Meals	Various *	Gaylyn Reske	Senior Dining Program Coordinator
	Delivery of Congregate Meals	AUT	Dan Idzikowski	Program and Policy Coordinator
	Dine-Out Program: Senior Meals/Site Supervision	LWBN dba VIA CDC with Restaurant Partners **	Gaylyn Reske	Senior Dining Program Coordinator
	Home-Delivered Meals for Older Adults	Goodwill Industries of Southeastern WI	Gaylyn Reske	Senior Dining Program Coordinator
	Nutrition Services for Native American Seniors	Indian Council of the Elderly	Gaylyn Reske	Senior Dining Program Coordinator
	Nutrition Site Supervision: 12 Dining Sites	Milwaukee Christian Center	Gaylyn Reske	Senior Dining Program Coordinator
	Senior Meals/Dining Site Supervision	Muslim Community and Health Center	Gaylyn Reske	Senior Dining Program Coordinator
	Senior Meals/Dining Site Supervision at United Community Center	United Community Center	Gaylyn Reske	Senior Dining Program Coordinator
	Senior Meals/Dining Site Supervision: 53206 ZIP Code	Greater Galilee	Gaylyn Reske	Senior Dining Program Coordinator
	Senior Meals/Meal Supervision at Milwaukee Christian Center	Milwaukee Christian Center	Gaylyn Reske	Senior Dining Program Coordinator
FUNDING	SERVICE	VENDOR	STAFF	STAFF TITLE
TITLE III-D	Coordination of Evidence-Based Prevention Programs	Jennifer Lefebvre	Rebecca Schmitt	Community Programs Coordinator
TITLE III-E	Family Caregiver Support and Alzheimer's Disease Direct Services	Alzheimer's Association	Jill Knight	Program Coordinator
	Family Support for Older Adults and People with Disabilities	Life Navigators	Jill Knight	Program Coordinator

NOTE: This is not a comprehensive list of all AAA-Coordinated services, as other services are funded by grant streams or funding sources outside of the Older Americans Act

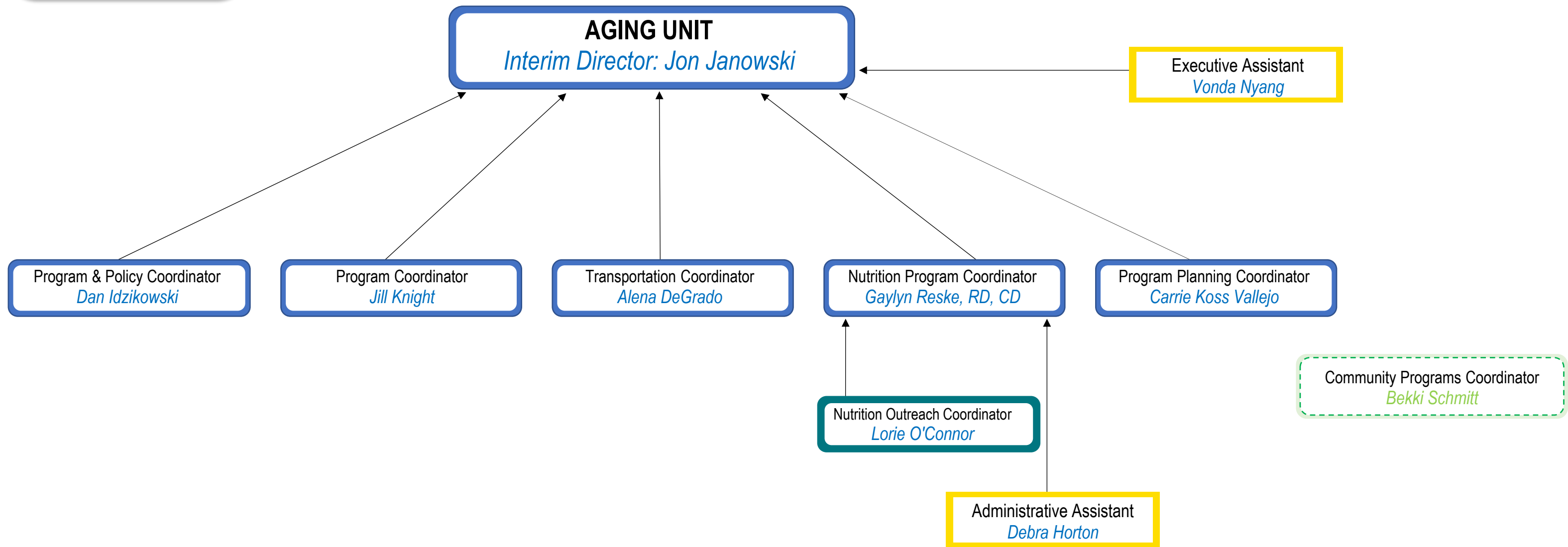
* Anmol, Aramark, Davians, Jimbo's and Sweet Fix (Damascus Gate)

** Antigua, Daddy's Soul Food and Grille and Orenda are the restaurant partners and the Dine-Out Program is supervised by the VIA CDC.

Revised: November 9, 2021



STAFFING CHART



⊛ NOTE: Aging Unit staff work very closely with and report to the Commission on Aging and perform some AAA duties.

⊛ NOTE: Community Programs Coordinator oversees the Wellness and Evidence-based health prevention programs based in the ADRC.

Revised: November 9, 2021