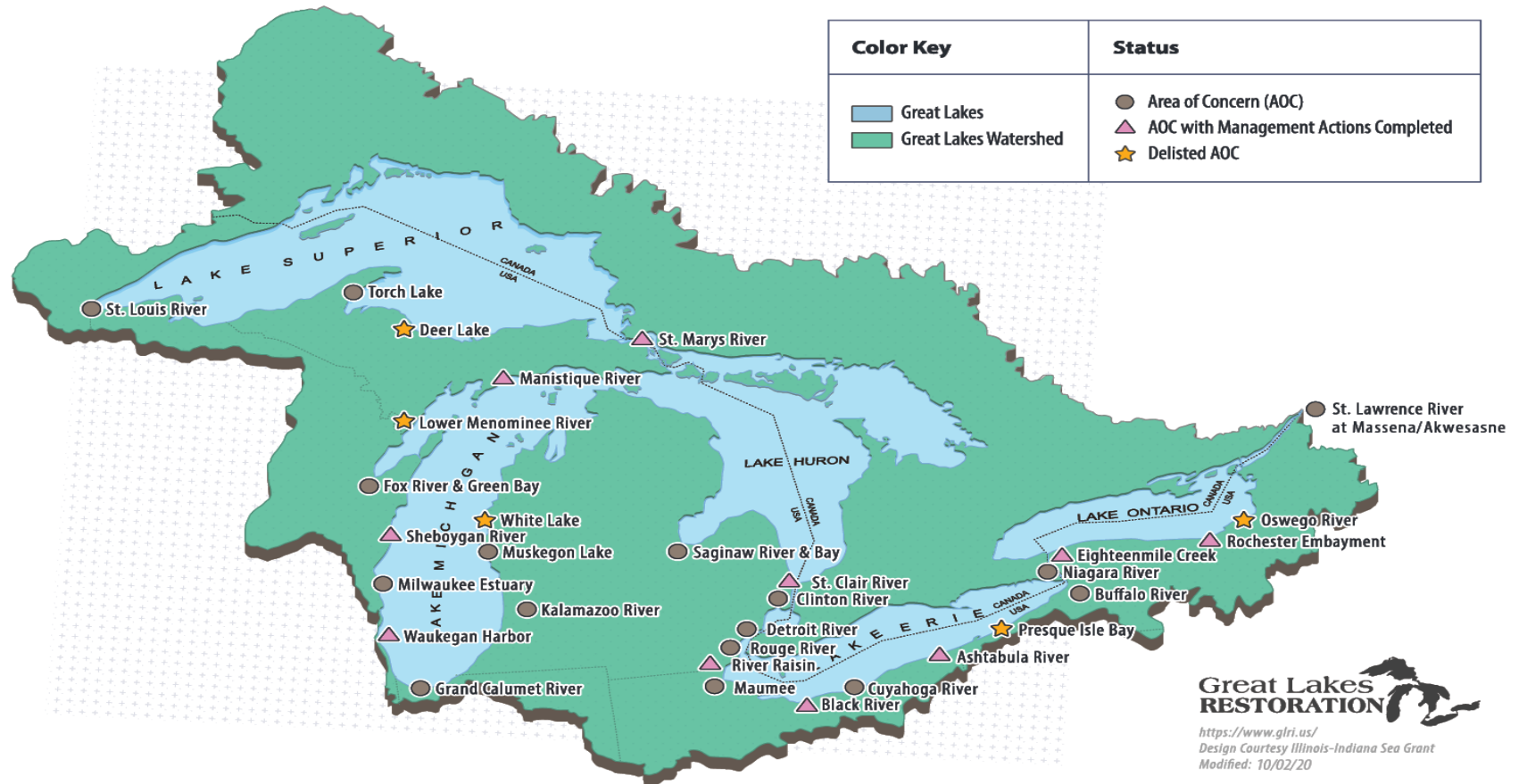




# Milwaukee County Parks

& THE MILWAUKEE ESTUARY AREA OF CONCERN

# U.S. Great Lakes Areas of Concern





# WHAT IS THE MILWAUKEE ESTUARY AOC?

An AOC is a waterway connected to the Great Lakes that has been significantly ecologically and environmentally degraded. The public isn't able to fully use the resource because of this degradation.

The estuary itself is confluence of the three major rivers in Milwaukee.





## RESTORING OUR RIVERS & ESTUARY:

**Milwaukee County is committed to the AOC partnership.** We are working to improve the quality of life within our communities and for fish and wildlife.

There are numerous impairments and issues to address. **General focus areas: Habitat and populations, Beaches, and Sediment Projects.**

# GREAT LAKES RESTORATION INITIATIVE TO PROJECT IMPLEMENTATION:

## GLRI DRIVES AOC WORK

Provides funding to address goals and objectives in the  
Great Lakes Water Quality Agreement

**EPA**  **DNR**  **MCP**

The US EPA provides funding to states, the states then fund local  
groups to implement AOC projects.

## PARKS LED PROJECTS & PARTNER LED PROJECTS

Working together to help address impairments through project  
implementation



# HABITAT & POPULATIONS



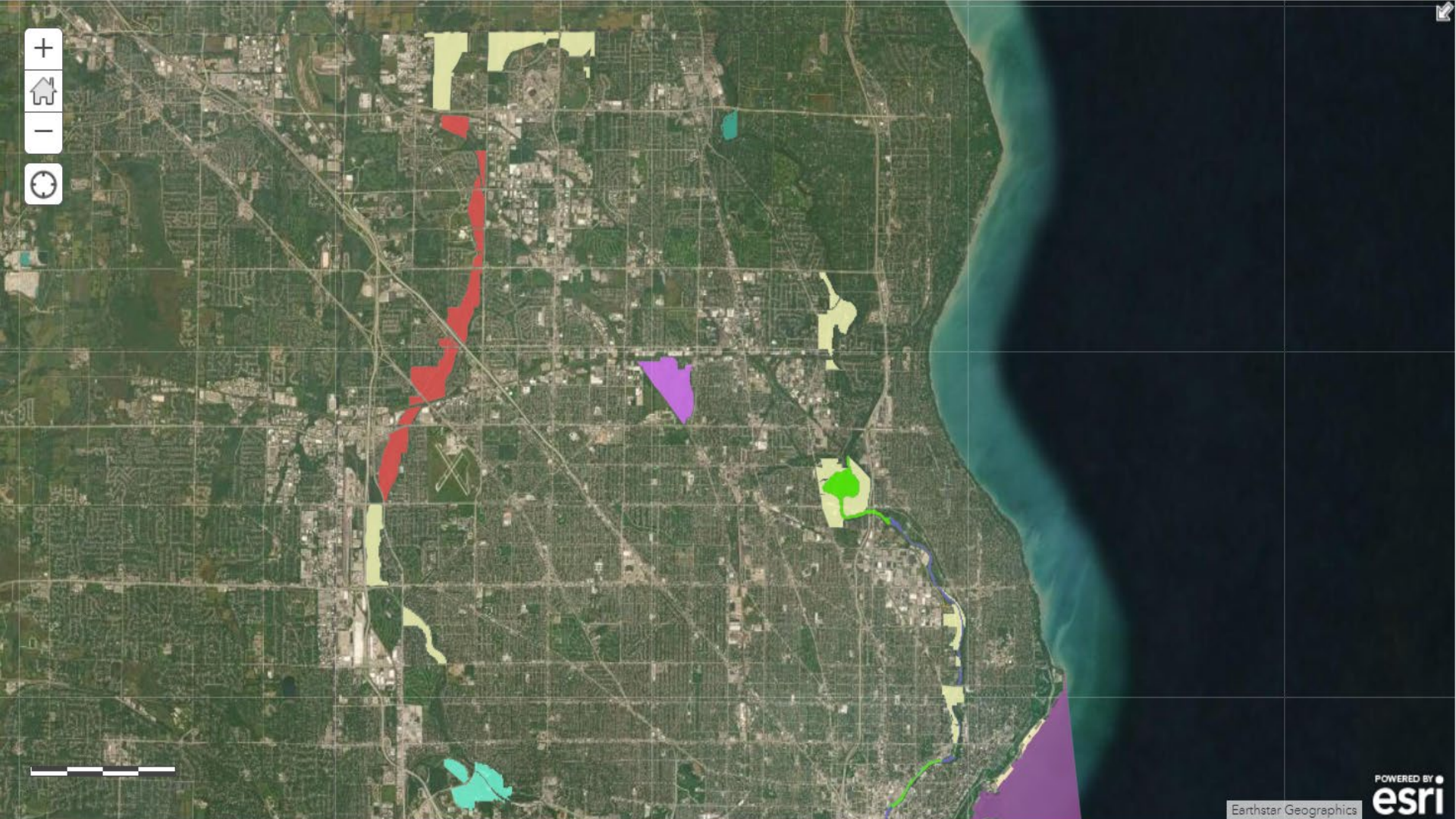
# BEACHES



# SEDIMENT









The Waterway Restoration Partnership is a robust group of *long-standing, trusted partners* in the community who have been working together for years to improve water quality in the area. With a *once in a generation opportunity* on the horizon, these organizations have formalized their partnership and *strengthened their commitment to work together* to clean up our waterways so the Milwaukee Estuary is no longer on the Environmental Protection Agency's list of Great Lakes Areas of Concern. Our goal is to *create awareness* of water quality problems in and around the Milwaukee Estuary Area of Concern and *empower the public to get involved* in the Partnership's efforts to *clean-up waterways, restore ecosystems, and improve outdoor recreation opportunities*.





# >120 Individuals representing 20+ organizations

