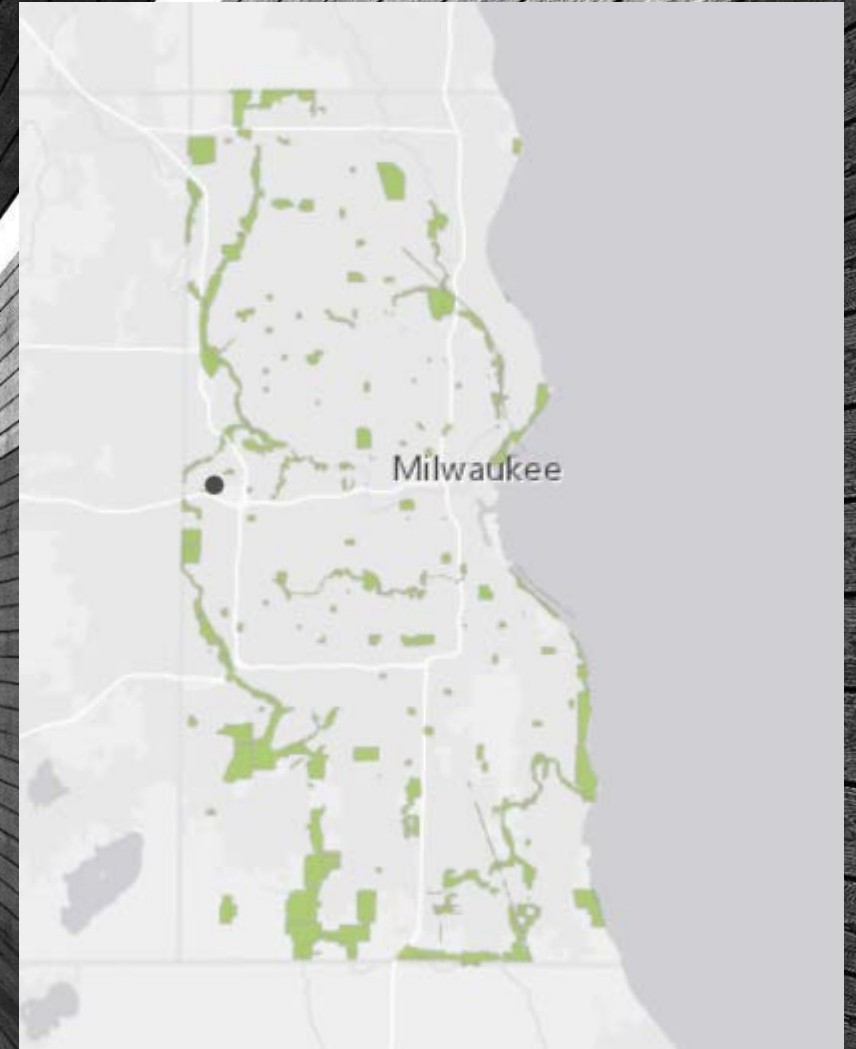
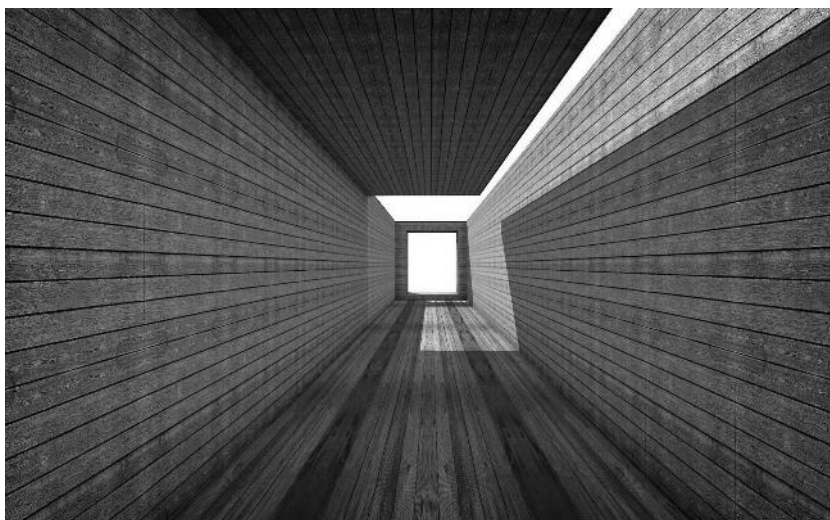


Milwaukee County

2021 Parks Equity Index

Approach & Updates





2020 Project Approach

Use of GIS to spatially consider equity need across Milwaukee County, based on park locations and typology. Annual improvements and updates are planned.

Parks Racial Equity Index

1. Service Area Definition

By park, define the service area radius for each park classification as assigned in the 2050 Parks and Open Space Plan. Use GIS to create buffer polygons for each park.

2a. Income Data Analysis

Median Household Income
(Inverse Rating Low- High)
25% Weight

2c. Demographic Data Analysis

Minority Population
25% Weight

2e. Crime Data Analysis

Personal crime Index
10% Weight

4. Weighted Composite

Tabular and map views of weighted data

2. Weighted Composite Data Analysis

2b. At Risk Population Data Analysis

Aggregate ESRI data – Households with disability, 65 + non-English speakers, households with no vehicle.
25% Weight

2d. Access to Health Care Analysis

Access to health insurance
15% Weight

3. OOAA & Racial Equity Ambassador Review

Internal controls and feedback

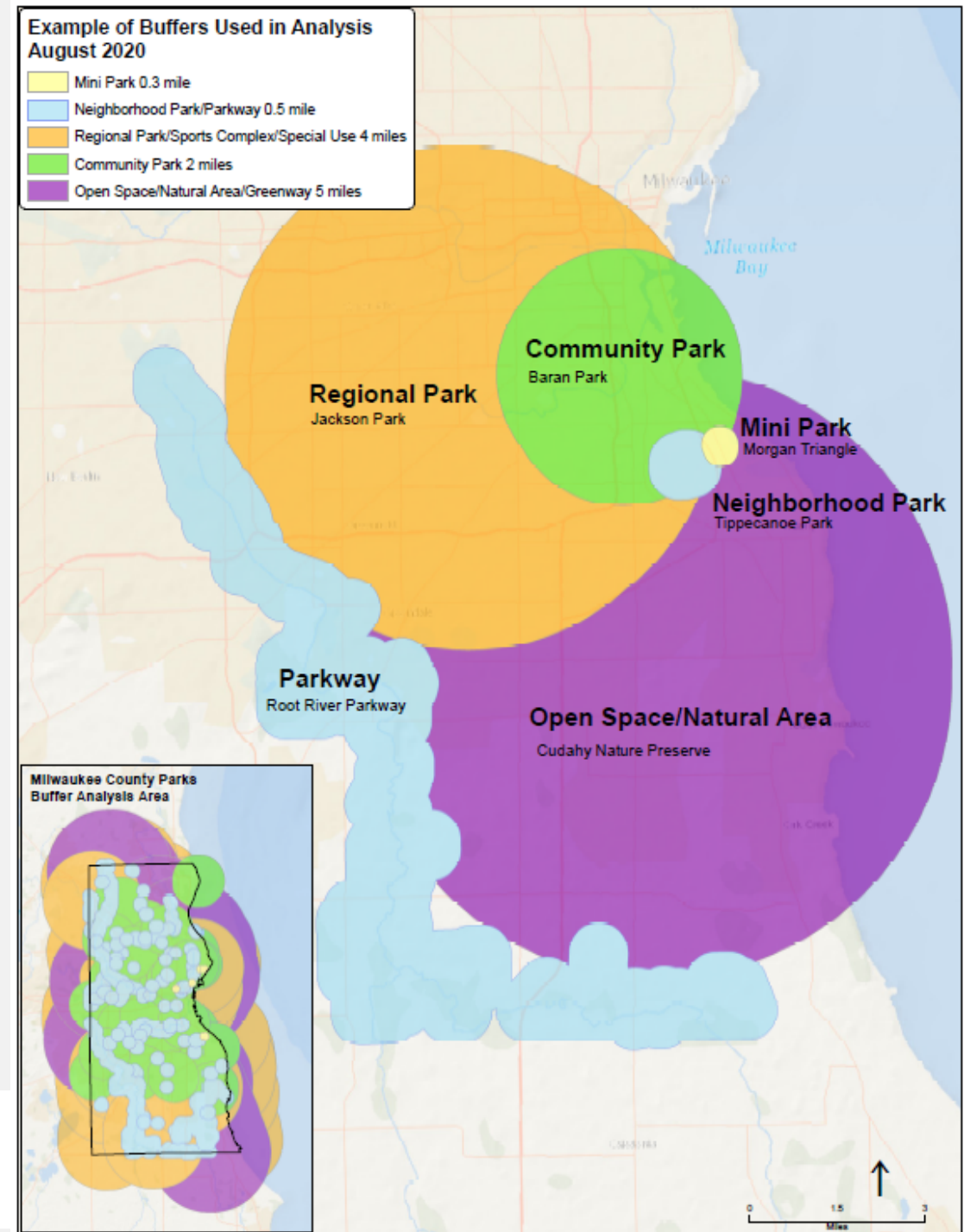
5. Index Score

0-10 scale used to assign index score for each park

Park Typology

○ Defined per the 2050 Draft Parks and Open Space Plan

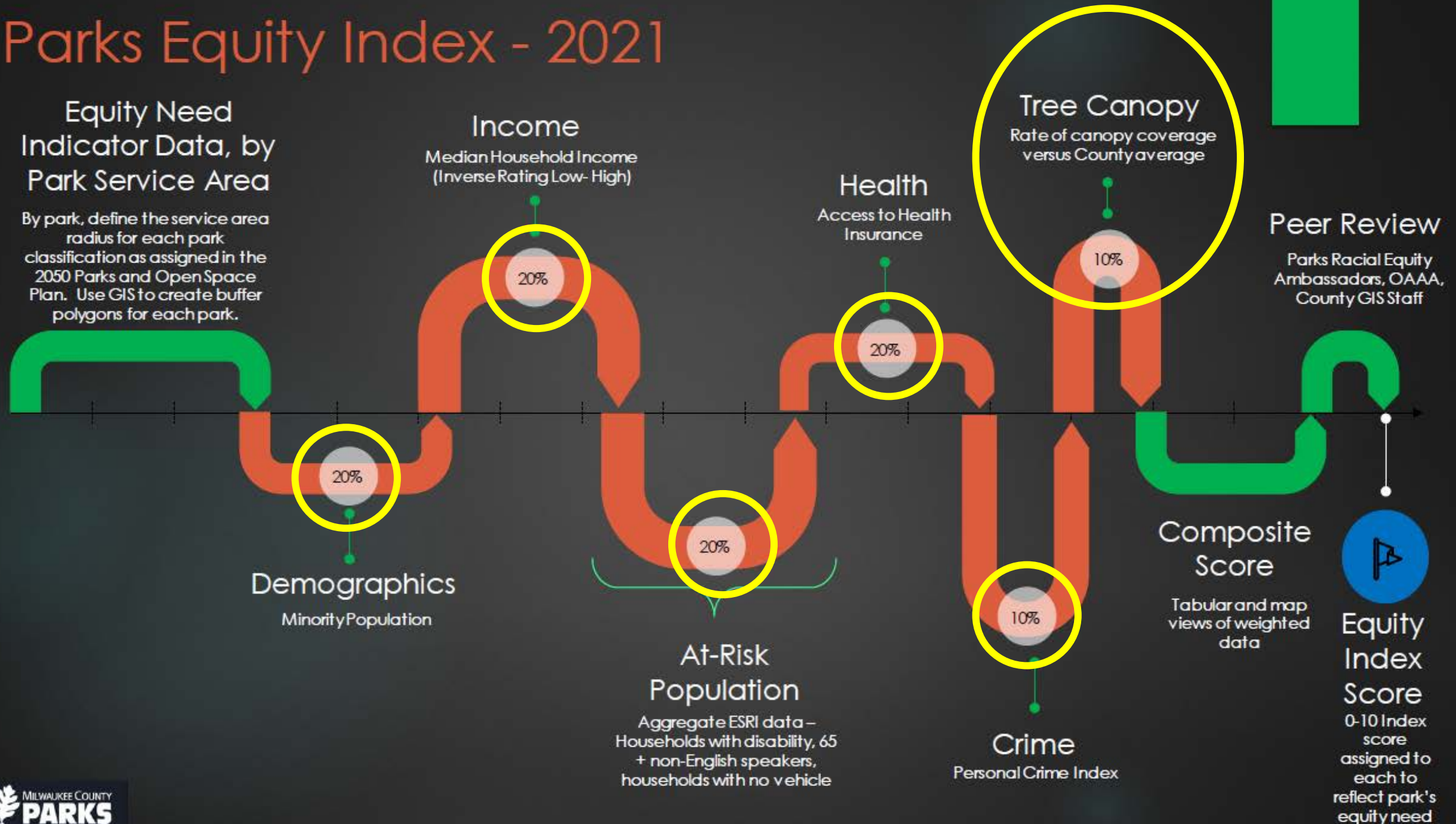
- **Regional Park** - Regional parks serve several communities and residents are predominantly natural resource based. 100 acres or more, Service radius: Four miles or greater.
- **Community Park** - A community park is accessible to multiple neighborhoods and focus on meeting community-based recreational needs while preserving unique landscapes and open spaces. 25 to 60 acres; may be up to 100 acres. Service radius: Two miles.
- **Neighborhood Park** - A neighborhood park may be defined by its use and facilities and may serve as the recreational and social focus of adjoining neighborhoods, contributing to their distinct identity. Three to 10 acres; occasionally smaller. Service radius: 0.5 mile.
- **Mini Park** - A mini park is a small site located in a dense/urban area with limited open space and recreational facilities. 2 acres or smaller; determined by availability of open land. Service radius: one-quarter to one-half mile.
- **Sports Complex** - A may be single-focused or multi-focused, include indoor and/or outdoor facilities, and may serve the recreational needs of youth and adults. Preferably 40+ acres for stand-alone complex. Service radius: Determined by community demand.
- **Special Use Facility** - A special use facility usually serves a single purpose. Special use facilities may be located inside another park or open space site and generally fall into three categories: historic/cultural/social sites, golf courses, and indoor or outdoor recreation facilities.
- **Parkways** - A parkway is a linear site featuring a roadway and a natural resource corridor, most often along major rivers and streams that connect communities, parks, and recreational and cultural components. A typical width of at least 200 feet, including the roadway and adjacent natural features.
- **Greenways** - A greenway is a narrow trail right-of-way that links neighborhoods, recreation facilities, attractions, and natural areas, or other park and open space sites and facilities. A typical width of at least 30 feet of unencumbered land. May include 10-foot-wide urban trail to support pedestrian/bicycle use.
- **Open Space/Natural Areas** - Open space/natural areas, undeveloped aside from any natural or paved trails, contain natural resources that can be managed for recreational and educational opportunities and for conservation benefits, such as protecting endangered species, wildlife habitat, and water quality.



Parks Equity Index - 2021

Equity Need Indicator Data, by Park Service Area

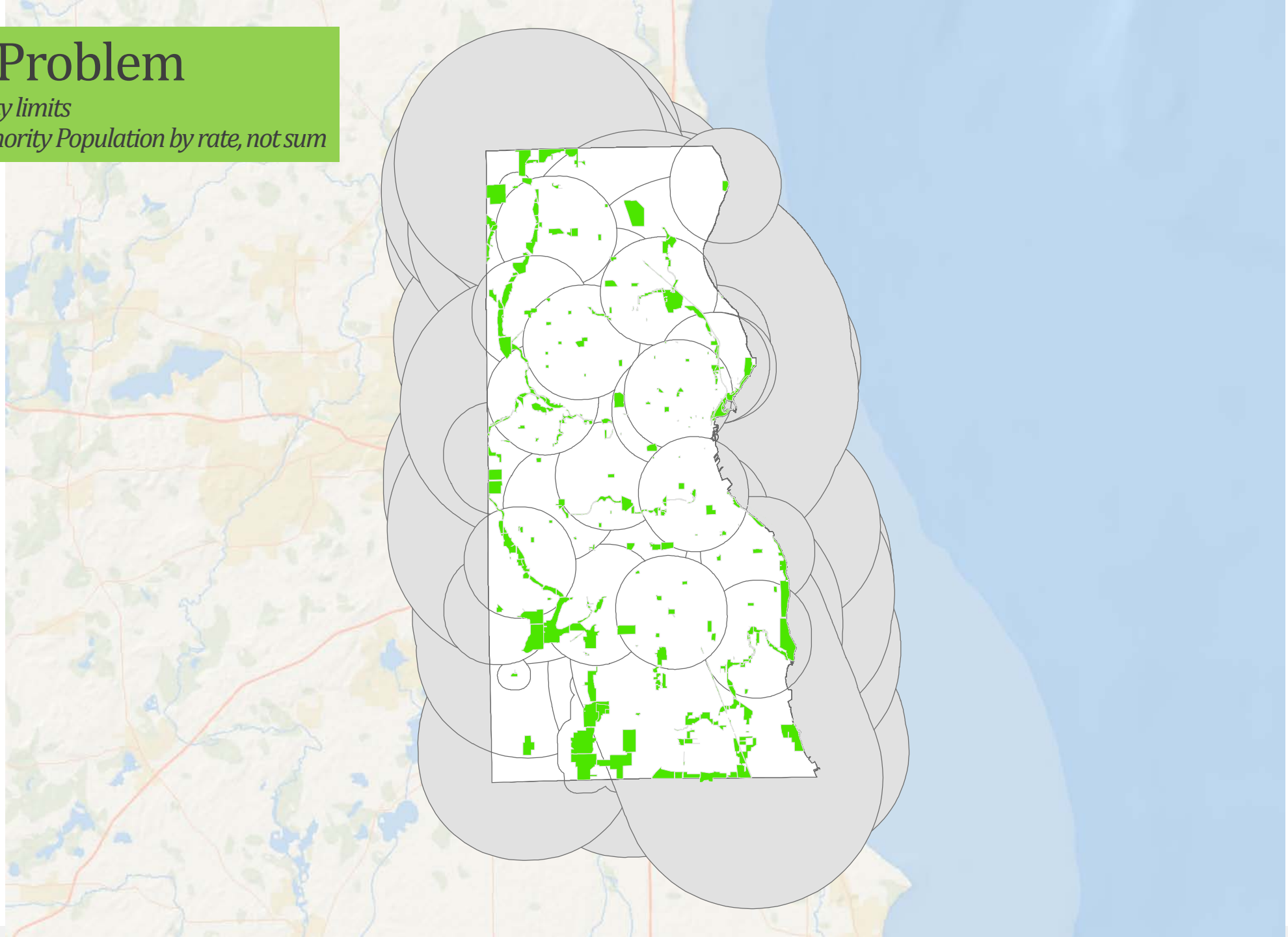
By park, define the service area radius for each park classification as assigned in the 2050 Parks and Open Space Plan. Use GIS to create buffer polygons for each park.



Edge Problem

Clip to County limits

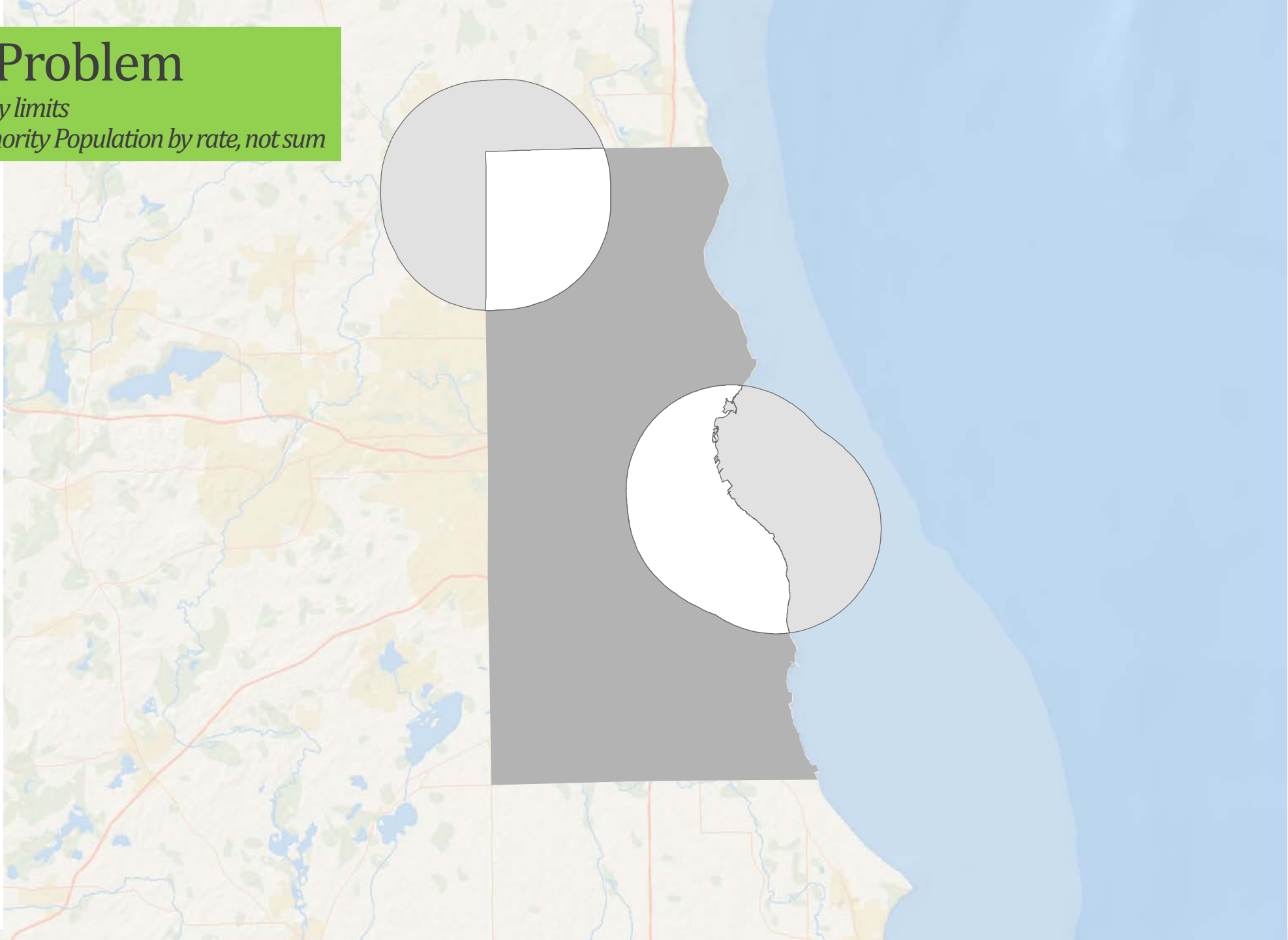
Measure Minority Population by rate, not sum



Edge Problem

Clip to County limits




Measure Minority Population by rate, not sum



Tree Canopy

Compared to County average

Canopy Review

-  Valley Park
 -  Canopy 19% - Co. Ave is 34%
 -  Neighborhood Park - half mile service area
- Canopy data source 2017 WI DNR



DATA SOURCES

Median Income:

2020 Median Household Income (Esri)
Source Esri , Vintage 2020

Personal Crime:

Name 2020 Personal Crime Index (AGS)
Source 2020 Crime , Vintage 2020

Health Care:

Name No Health Insurance
Source Esri and Bureau of Labor Statistics , Vintage 2020

At Risk Population:

Disability :

Name 2014-2018 ACS Households with 1+ Persons with a Disability
Source American Community Survey (ACS) , Vintage 2013-2017

65 + non-English Speakers

(Three tables used) 2014-2018 ACS Households with 1+ Persons with a Disability, 2014-2018 ACS Pop 65+ speak Asian-Pacific Isl & No English, 2014-2018 ACS Pop 65+ speak Other Language & No English

Name 2014-2018 ACS Pop 65+
Source American Community Survey (ACS), Vintage 2013-2017

Households with No Vehicle

2014-2018 ACS Owner Households with No Vehicles
Source American Community Survey (ACS)
Vintage 2014-2018

Minority Populations

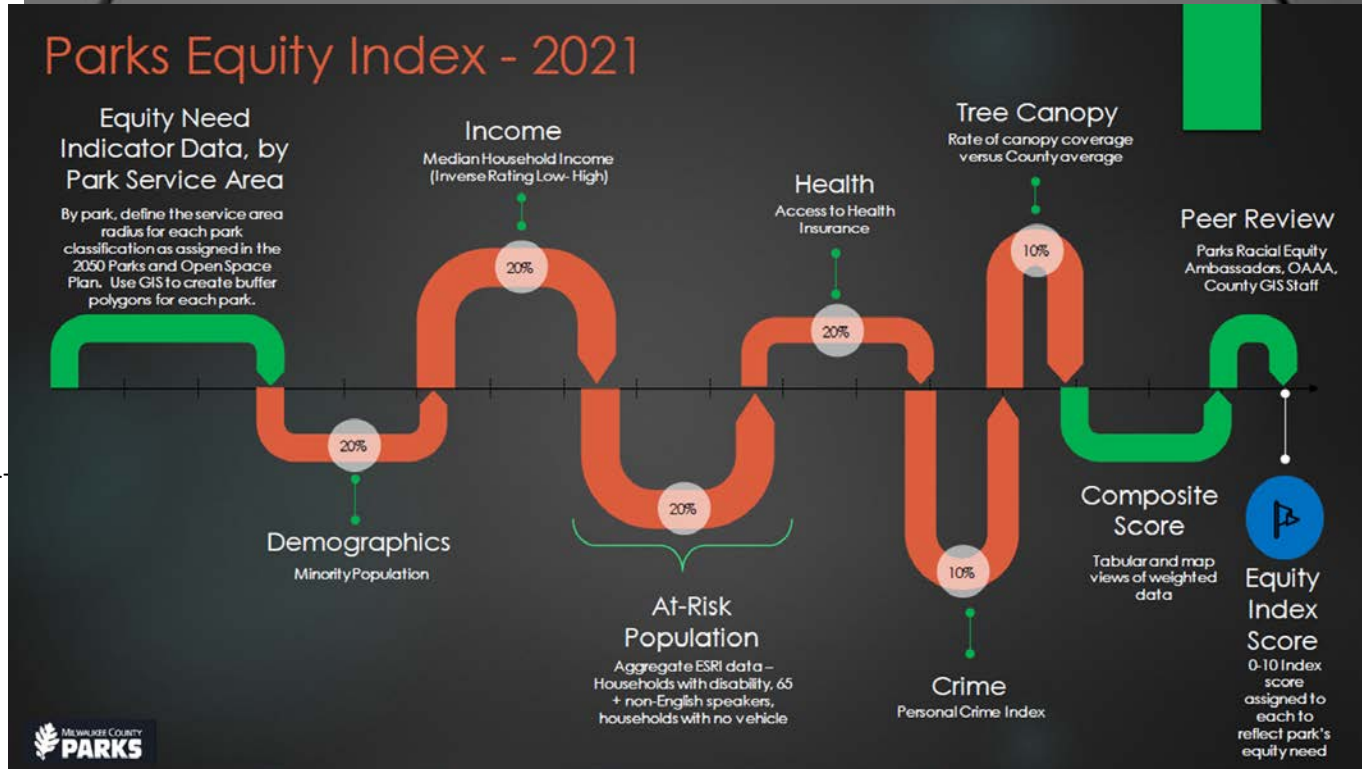
Name 2020 Minority Population (Esri)
Source Esri , Vintage 2019

Tree Canopy

Name Milwaukee County Tree Canopy

Source Erker, T., Townsend, P., & Buckler, D. (2019). Milwaukee County Land Classification, 2017. Wisconsin DNR. Retrieved from DNR Urban Forestry

Vintage 2017



Equity Index Score - *Higher Score = Higher Equity Need*

1	2	Site	2020 REI	2021 Equity Index Score (1-10)***	Comm Analyst Rank	Adjusted Rank**	Final score	Adjusted Final Score*	2020 Median Household Income				2020 Personal C		
									Value	Score	weight	Weighted score	Value	Score	weight
3		East Side Bike Trail	10	10	1	1	0.87	0.73	\$41,933	0.79	0.20	0.16	352	0.41	0.10
4		Washington Park	9	10	2	2	0.77	0.67	\$40,362	0.81	0.20	0.16	367	0.43	0.10
5		Beckum Park	9	9	4	3	0.72	0.65	\$38,437	0.83	0.20	0.17	397	0.47	0.10
6		Mitchell Park	9	9	3	4	0.72	0.65	\$41,607	0.80	0.20	0.16	328	0.38	0.10
7		Cambridge Woods	9	9	6	5	0.70	0.63	\$38,395	0.83	0.20	0.17	413	0.49	0.10
8		Juneau Park	8	9	8	6	0.67	0.63	\$37,327	0.84	0.20	0.17	389	0.46	0.10
9		War Memorial and Art Center	8	9	10	7	0.66	0.63	\$37,116	0.84	0.20	0.17	388	0.46	0.10
10		Veterans Park	8	9	9	8	0.66	0.63	\$37,411	0.84	0.20	0.17	387	0.46	0.10
11		McKinley Park	8	9	13	9	0.64	0.61	\$37,293	0.84	0.20	0.17	396	0.47	0.10
12		River Front Launch Site	8	9	12	10	0.64	0.61	\$38,554	0.83	0.20	0.17	346	0.41	0.10
13		County Grounds Park	8	9	7	11	0.69	0.60	\$43,551	0.78	0.20	0.16	321	0.38	0.10
14		Union Pacific Railroad Corridor	9	9	5	12	0.70	0.59	\$41,966	0.79	0.20	0.16	404	0.48	0.10
15		Jackson Park	8	8	11	13	0.64	0.58	\$46,531	0.75	0.20	0.15	196	0.23	0.10
16		KK Sports Center	7	8	15	14	0.62	0.57	\$45,058	0.76	0.20	0.15	199	0.23	0.10
17		Lincoln Park	8	8	14	15	0.63	0.57	\$41,124	0.80	0.20	0.16	435	0.51	0.10
18		Moody Park	5	8	37	16	0.41	0.56	\$21,958	1.00	0.20	0.20	840	1.00	0.10
19		Wilson Recreation	7	8	16	17	0.60	0.55	\$49,153	0.72	0.20	0.14	154	0.18	0.10
20		Back Bay Park	7	8	22	18	0.56	0.55	\$37,189	0.84	0.20	0.17	421	0.50	0.10
21		Wilson Park	7	8	17	19	0.60	0.55	\$49,187	0.72	0.20	0.14	156	0.18	0.10
22		Milwaukee Rotary Centennial Arboretum	7	8	19	20	0.57	0.55	\$37,166	0.84	0.20	0.17	445	0.53	0.10
23		Rover West	5	8	20	21	0.57	0.55	\$37,909	0.83	0.20	0.17	452	0.53	0.10
24		Estabrook Park	7	8	18	22	0.59	0.55	\$40,261	0.81	0.20	0.16	435	0.51	0.10
25		Clarke Square Park	4	8	60	23	0.35	0.54	\$28,288	0.93	0.20	0.19	307	0.36	0.10
26		South Shore Park	7	8	21	24	0.56	0.54	\$44,483	0.77	0.20	0.15	217	0.25	0.10
27		Cupertino Park	7	8	23	25	0.56	0.54	\$43,503	0.78	0.20	0.16	224	0.26	0.10
28		Tiefenthaler Park	5	8	43	26	0.39	0.54	\$23,333	0.99	0.20	0.20	639	0.76	0.10
29		Lindbergh Park	4	8	50	27	0.37	0.53	\$28,280	0.93	0.20	0.19	625	0.74	0.10

2021 Planned Applications



Capital Project Planning

- *Used for both internal evaluation as well as submission to CIC*



Major Maintenance Funding Allocations

- *Used for internal decision-making purposes to weigh options*



Other Internal Uses

- *Workforce allocations, etc.*



Project Proposal Requests (On Hold)

- *Used in matrix evaluation and scoring of third-party project proposals*



Land Utilization Requests

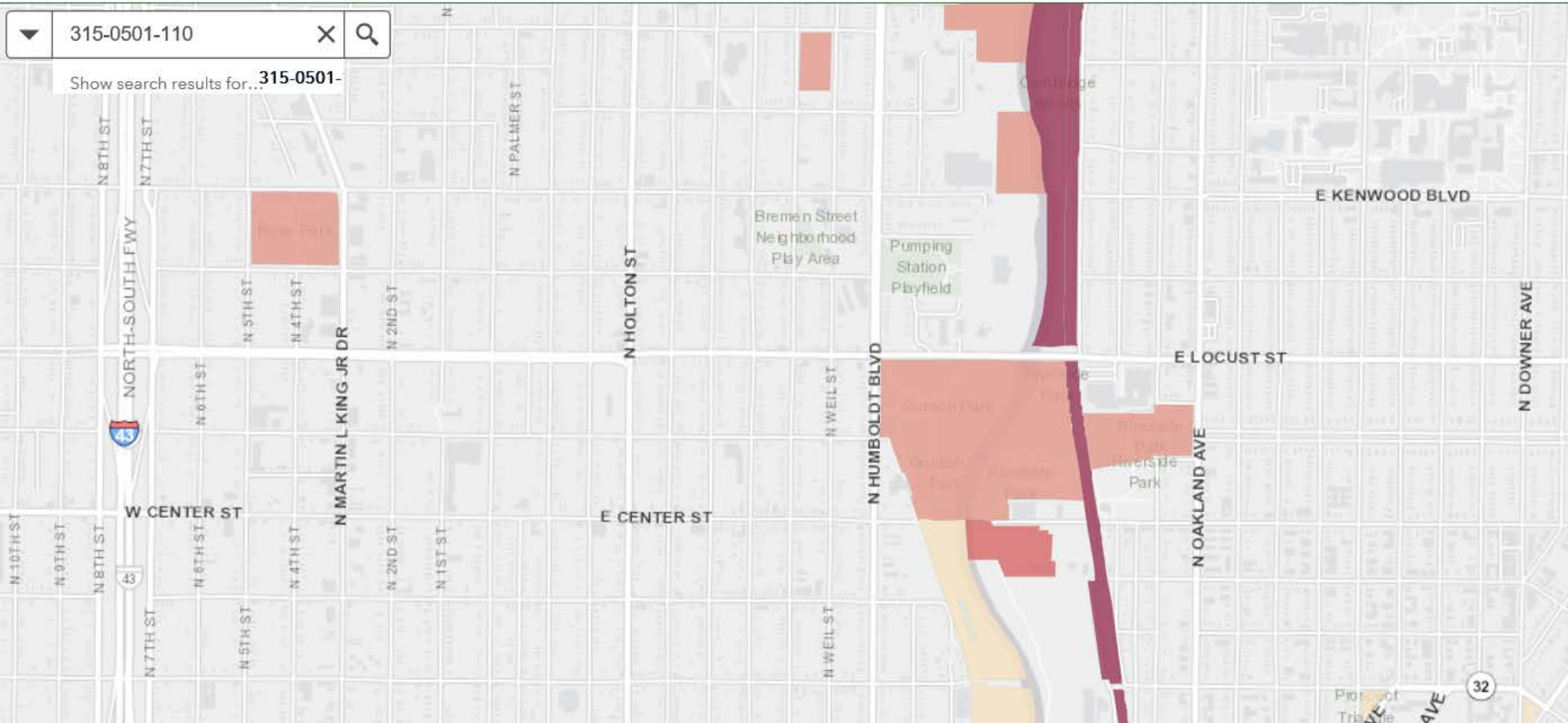
- *Used in matrix evaluation and scoring of third-party project proposals*

Other Applications



Parks Planning & Development GIS App Layer

Planning and Development GIS Viewer - Milwaukee County Parks



Layers

- Contour Lines - Planimetric
- AOC Future Projects
- AOC Completed Projects
- AOC Current Projects
- Area of Concern Boundary
- Parcels with Property Information
- Soils
- SEWRPC Environmental Corridors
- Parks Equity 2020
- Streets
- Utilities Group
- Cadastral Group

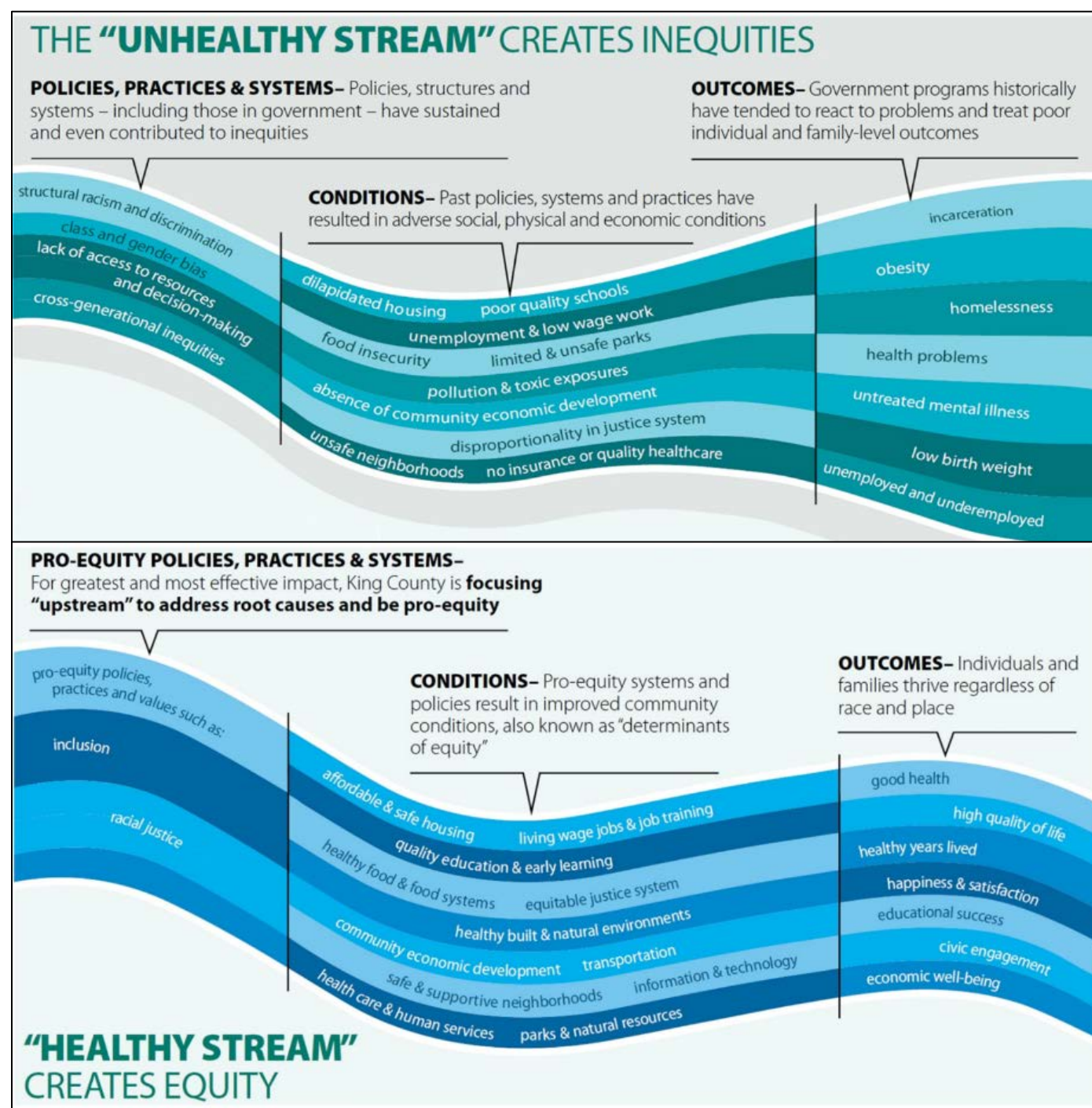
Current Improvements

- Updated annual data (ESRI)
- Sub-Index by park typology (Filtering through Excel)
- Evaluation of population size as driving element
 - Edge Problem – Minority Population by rate, not sum
- Tree canopy considerations

Future Possibilities

- Walkable distance evaluation (10-min)
- Evaluation of aquatic facilities as driving asset
- Improvements to health data
 - OEM EMS dashboard data
 - ESRI/GARE/Milwaukee County pilot project

Graphics From “Applying GIS and Geographic Analysis to Support Equity and Social Justice” by Greg Babinski





Q&A

Please share your thoughts and help us
improve this tool!