



DHHS Aging Integration Discussion

01.22.21

2021 DHHS Priorities



- Racial & Health Equity (10 focus areas have been identified)
- Workplace Culture support/investment, especially given COVID
- Integration and breaking down silos (Aging, Veteran's Services, Children's, Adult)
- Partnerships / system change work
- Finding new resources (for prevention, infrastructure, etc.)
- Technology
- Emergency Response
- Facility Planning

DHHS Future State/ Strategic Plan:

“Together, creating healthy communities”

STRATEGY #1 –

“No Wrong Door / Integrated Services”



- Orchestrate resources and navigate participants with human service needs.
- Address root causes of needs and integrate services for participants.
- Inform internal and external work by understanding racial equity and social determinants that impact the individual and their support network.
- **Goal of improving *participants'* overall health outcomes.**

STRATEGY #2 –

“Population Health / System Change”:

- Along with other County departments, become catalyst for change to address racial equity and prevention in human services systems that DHHS resides in and in systems that affect vulnerable participants.
- Invest funds in upstream resources.
- **Goal of improving *community* health outcomes.**

Alignment of County & DHHS Strategies



**COUNTY
(2020)**

Create Intentional Inclusion

Reflect the full diversity of the County at every level of County government

Create and nurture an inclusive culture across the County

Bridge the Gap

Determine what, where and how we deliver services based on the resolution of health disparities

Break down silos across County government to maximize access to and quality of services offered

Apply a racial equity lens to all decisions

Invest in Equity

Invest "upstream" to address root causes of health disparities

Enhance the County's fiscal health and sustainability

Dismantle barriers to diverse and inclusive communities

**DHHS
(2019-2020)**



Strategy #1

No Wrong Door /
Integrated Services & Care



Strategy #2

Population Health /
System Change

People Centered Design: Connection to MKE County's No Wrong Door



DHHS focuses on enhancing our whole **system of care** for people, across the lifespan, as they move through their complete care journey. We also emphasize racial and health equity.



DHHS Future State: System of Care Across the Lifespan

Children's Services

Wraparound Milwaukee

Birth to 3

Children's Long- term Support

Youth & Family– Community

Detention & Court

Management Services

Budget & Accounting Services

Contract Oversight

Training and Staff Supports

Quality Improvement

Housing
Energy Assistance

Adult Services

Aging & Disability Resource Center

Aging Services

BHD Community Services

Vision of Integration



- Integration does not solely mean eliminating organizational inefficiencies, but rather **centering services around participants** and addressing their needs in an integrated fashion.
- Our primary goal is to **serve people across the lifespan** with care that they deem as acceptable which **promotes the dignity** of individuals regardless of race, gender, socio-economic status.
- To accomplish this, DHHS and Aging are committed to convening and **collaborating with all partners** who share the County's population health goals. We believe the work that we are doing will be a model for scaling this process across departments to ensure enterprise-wide alignment and lead us to becoming the **healthiest County in Wisconsin.**

Project Team Members

Executive Sponsors:

- David Crowley, Milwaukee County Executive
- Shakita LaGrant- McClain, DHHS Director
- David Muhammad, DHHS Deputy Director
- Jon Janowski, Aging Administrator/ Director

Program Manager:

- Sumaiyah Clark, Enterprise Project Administrator

Team Members:

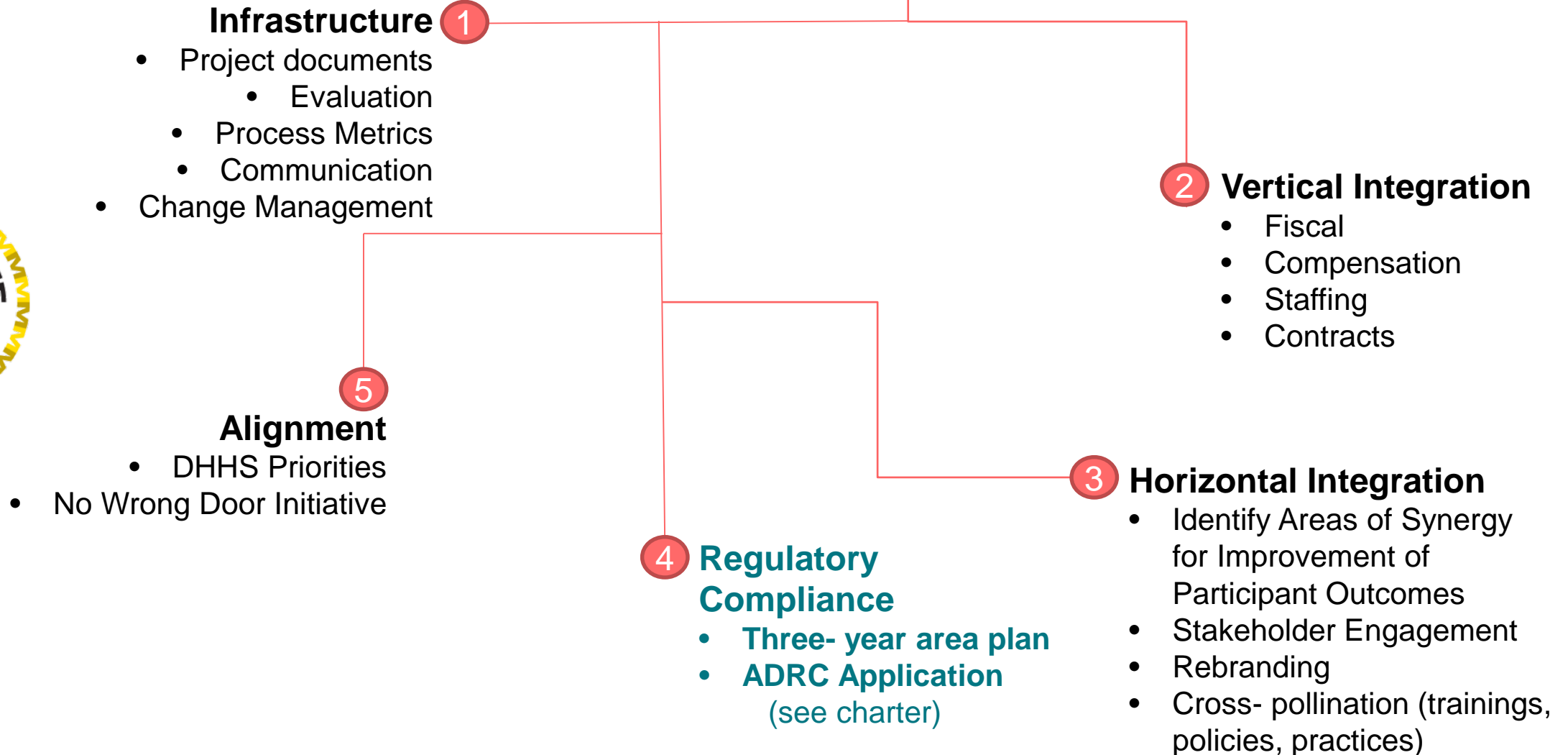
- Each workstream has been assigned a different Team Lead and workgroup members

Governing Authorities:

- Milwaukee County Board of Supervisors
- ADRC Governing Board
- Commission on Aging



Project Categories





We appreciate your
time and attention to
our presentation.
Thank you!

Questions?