

ESTIMATE OF QUANTITIES

FOR BIDDING

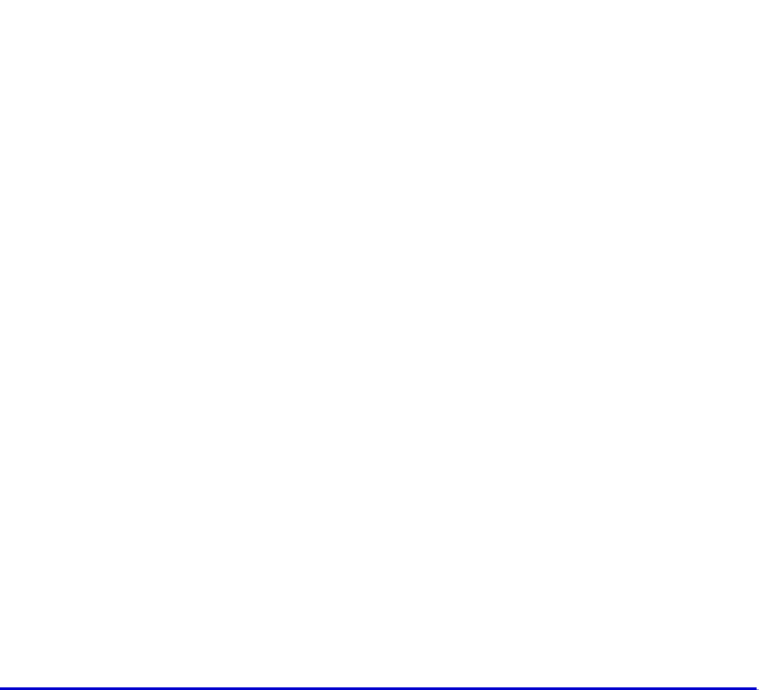
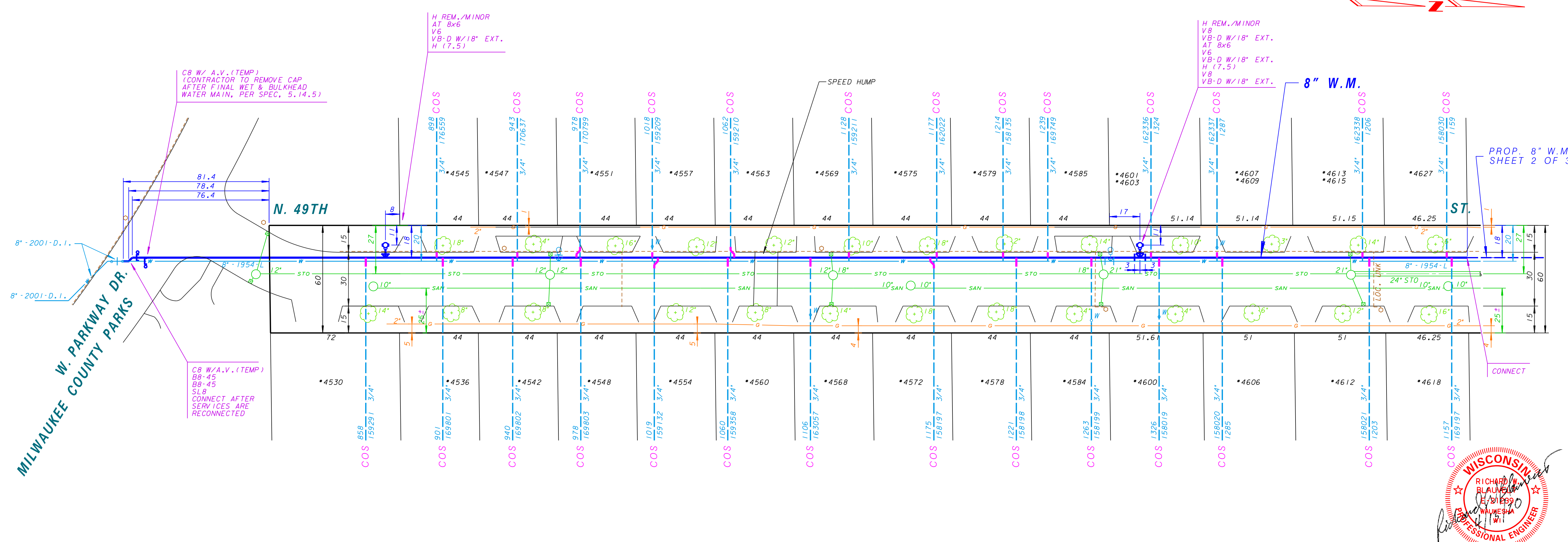
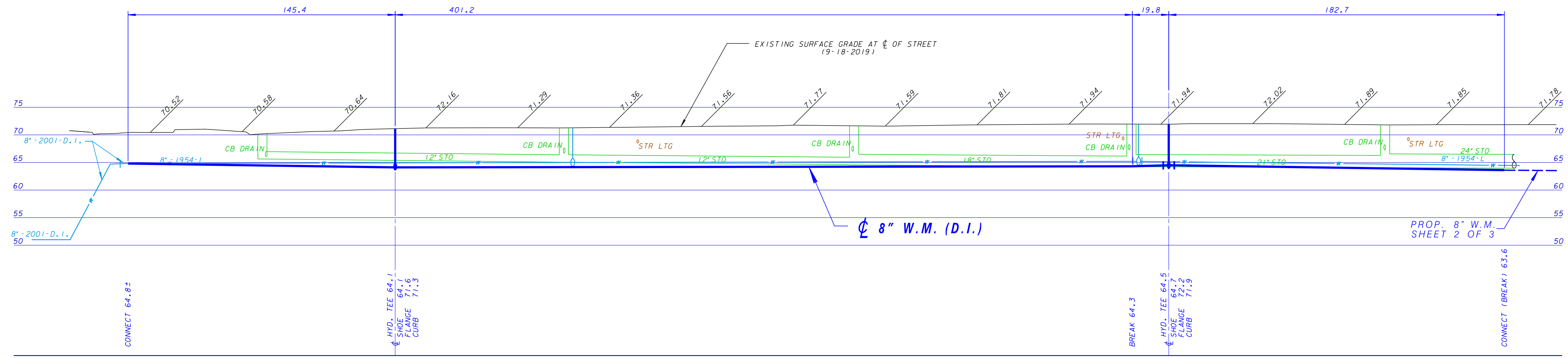
- FURNISH PIPE AND INSTALL
(DUCTILE IRON PUSH-ON RUBBER GASKET JOINT)
- 750 FT. - 8" WATER MAIN
14 FT. - 6" HYDRANT BRANCH
- INSTALL
- 2 - HYDRANT
- REMOVE
- 2 - HYDRANT / MINOR
- SERVICES
- 27 - CONNECT ORIGINAL SERVICE (C.O.S. - SHORT)
- PERMANENT PAVEMENT
- 350 SQ. YDS. - 4" ASPHALTIC CONCRETE
- CURB AND GUTTER
- 650 LIN. FT. - CONCRETE
- BARRICADES AND TRAFFIC CONTROL
- LUMP SUM

- SAWCUTTING
- 855 LIN. FT. - IN ASPHALT
- AGGREGATE SLURRY BACKFILL
- 80 CU. YDS.
- FINISHING OF ROADWAY
- LUMP SUM
- FURNISH, INSTALL, AND MAINTAIN EROSION CONTROL
- LUMP SUM

- FOLLOWING IS A LIST OF THE FITTINGS SHOWN ON THIS CONSTRUCTION PLAN THAT WILL BE PROVIDED BY THE CITY.
- 2 - AT 8x6
 - 2 - BB-45
 - 2 - V6
 - 4 - VB-D
 - 4 - VALVE BOX 18" EXT.
 - 2 - H (7.5)
 - 1 - SLB
- 27 - 1" CORPORATION STOP
- PERMITS TYPE

- EXISTING PAVEMENT IN THE INTERSECTION OF N. 49TH ST. & W. PARKWAY DR. AND APPROXIMATELY 100 FT. NORTH IS V.T.A.C. (2003) OVER 3" ASPHALT CONCRETE OVER 5" GRAVEL (1963).
- EXISTING PAVEMENT IN N. 49TH ST. FROM APPROXIMATELY 100 FT NORTH OF W. PARKWAY DR. TO W. HAMPTON AVE. IS V.T.A.C. (1983) OVER 2" ASPHALT CONCRETE OVER 6" GRADED AGGREGATE CRUSHED STONE BASE. (1957).
- ABANDONMENT OF WATER MAINS, VALVES, AND HYDRANTS
- 750 FT. - 8"-1954-L WATER MAIN
- 2 - HYDRANT
- 2 - 8" VALVE

- BENCHMARKS
- HYD. - S.W. CORNER OF W. HAMPTON AVE. & N. 49TH ST. (N.W. BONNET BOLT) ELEV. 72.59
 - HYD. - W. SIDE OF N. 49TH ST. (4745 N. 49TH ST.) (N.W. BONNET BOLT) ELEV. 72.95
 - HYD. - W. SIDE OF N. 49TH ST. (4687 N. 49TH ST.) (N.W. BONNET BOLT) ELEV. 72.41
 - HYD. - W. SIDE OF N. 49TH ST. (4645 N. 49TH ST.) (N.W. BONNET BOLT) ELEV. 73.64
 - HYD. - W. SIDE OF N. 49TH ST. (4601 N. 49TH ST.) (N.W. BONNET BOLT) ELEV. 73.88
 - HYD. - W. SIDE OF N. 49TH ST. (4551 N. 49TH ST.) (N.W. BONNET BOLT) ELEV. 72.67



PLAN LINE & UTILITY LEGEND

GAS	— G —	SANITARY SEWER	— SAN —	STREET LIGHTING	— SLT —
ELECTRIC	— E —	STORM SEWER	— STO —	CITY UNDERGROUND CONDUIT	— CUC —
TELEPHONE	— T —	COMBINED SEWER	— CMB —	PROPOSED CURB / PVMT	— PC —
CABLE TELEVISION	— TV —	WATER MAIN	— W —	PAVING LIMITS	— X —
FIBER OPTICS	— FO —	WATER SERVICE	— WS —	STRUCTURE / BUILDING	— S —
PROPOSED UTILITY	— P —	PRESSURE DISTRICT	— PD —	FENCE	— F —

POWER POLES ○ CONCRETE ○ ALUMINUM ○ WOOD WATER MAIN VALVES + GATE + BUTTERFLY ○ W-SERV ICE

UTILITIES ⊠ TRAFFIC SIGNAL ⊠ TRAFFIC CONTROL BOX ○ GAS VALVE HYDRANTS ○ 1 NOZZLE ○ 3 NOZZLE

FOR START OF PLAN NOTES SEE W. STARK ST., PLAN FILE NO. 2020114.

MILWAUKEE COUNTY PARKS PERMIT NOTE

W. PARKWAY DR. IS MILWAUKEE COUNTY PARKS RIGHT OF WAY AND REQUIRES THE CONTRACTOR TO OBTAIN A RIGHT OF ENTRY PERMIT FROM MILWAUKEE COUNTY PARKS PRIOR TO ANY CONSTRUCTION ACTIVITY. RIGHT OF ENTRY PERMIT APPLICATION CAN BE FOUND AT [HTTPS://COUNTY.MILWAUKEE.GOV/EN/PARKS/PLAN/GET-A-PERMIT](https://county.milwaukee.gov/en/PARKS/PLAN/GET-A-PERMIT), OR WITH DIRECT LINK [HTTPS://WWW.COGNITIFORMS.COM/MILWAUKEECOUNTYPARKS/RIGHTOFENTRYPERMITAPPLICATION](https://www.cognitiforms.com/MILWAUKEECOUNTYPARKS/RIGHTOFENTRYPERMITAPPLICATION). ANY REQUIRED FEES TO BE PAID BY CONTRACTOR AND REIMBURSED BY MWP THROUGH CONTRACT PAYMENTS. AFTER ALL PAYMENT DOCUMENTATION AND PROOF OF PERMIT IS RECEIVED, EMAIL PLANNING@MILWAUKEECOUNTYWI.GOV FOR MORE INFORMATION.

TRAFFIC PROVISIONS

MAINTAIN TWO WAY TRAFFIC.

USE NO PARKING ANYTIME ON WEST SIDE OF N. 49TH ST.

USE NO PARKING 7AM TO 5PM ON EAST SIDE OF N. 49TH ST.

PAVEMENT MARKINGS MUST BE RETURNED TO ORIGINAL MATERIAL AND CONDITION.

PROVIDE SEVEN (7) DAYS ADVANCED NOTICE TO TRAFFIC ENGINEERING AT 286-3632 FOR THE INSTALLATION OF TEMPORARY "NO PARKING" SIGNS OR IF THERE ARE ANY QUESTIONS CONCERNING THESE COMMENTS.

IF TRAFFIC OR STREET SIGNS ARE TAKEN DOWN DURING CONSTRUCTION ACTIVITIES, THE CONTRACTOR SHALL CONTACT MR. MIKE CHANEKSKE OF INFRASTRUCTURE SERVICES AT 286-5965 TO HAVE THE SIGNS RE-INSTALLED.

ANY PERSON WORKING IN THE PUBLIC WAY SHALL COMPLY WITH THE CITY OF MILWAUKEE, DEPARTMENT OF PUBLIC WORKS BOOKLET, "TRAFFIC CONTROL FOR CONSTRUCTION AND MAINTENANCE WORK" AND PART VI OF THE STATE OF WISCONSIN "MANUAL ON UNIFORM TRAFFIC CONTROL DEVICES".

ASPHALT SPEED HUMP NOTE

ASPHALT SPEED HUMPS TO BE RESTORED TO ORIGINAL CONDITION. ALL COSTS OF ASPHALT SPEED HUMP RESTORATION TO BE INCLUDED IN THE UNIT BID PRICE FOR 4" ASPHALTIC CONCRETE PAID AS TWO TIMES THE AREA RESTORED.

PAVEMENT MARKINGS TO BE RESTORED TO ORIGINAL CONDITION. ALL COSTS OF PAVEMENT MARKING RESTORATION TO BE INCLUDED IN THE UNIT BID PRICE FOR FINISHING OF ROADWAY.

CALL DIGGERS HOTLINE
1-800-242-8511

TOLL FREE TO OBTAIN LOCATION OF UNDERGROUND BEFORE YOU DIG. WISCONSIN STATUTE 182.0715 REQUIRES MIN. OF 3 WORK DAYS NOTICE BEFORE YOU EXCAVATE

OTIE, LLC
1033 N. MAYFAIR RD. MILWAUKEE WI. 53226
414-257-4200 / 414-257-2492

NO.	BY	REVISION	DATE

Milwaukee Water Works Water Engineering
Department of Public Works

WATER MAIN

IN N. 49TH ST.
FROM W. PARKWAY DR.
TO W. HAMPTON AVE.

SCALE: HORIZONTAL 1" = 30'
VERTICAL 1" = 10'

14 SEC. NO. 228
PLAN DATE 4-13-20
DRAWN BY MJP
CHECKED BY RWB
SURVEY BY OTIE

APPROVED: *[Signature]* DATE: 5/20/20
CHIEF DESIGN ENGINEER
DATE: 5/20/20
SPECIAL DEPUTY COMMISSIONER OF PUBLIC WORKS

PROGRAM NO. 2020-650 CONTRACT NO. C.C. FILE NO. 191974
PROJECT NO. WT410200650 OFFICIAL NOTICE NO. 68-1-2020 DATE ADOPTED 5/26/20

SHEET NO. 1 OF 3 PLAN FILE NO. 2020122