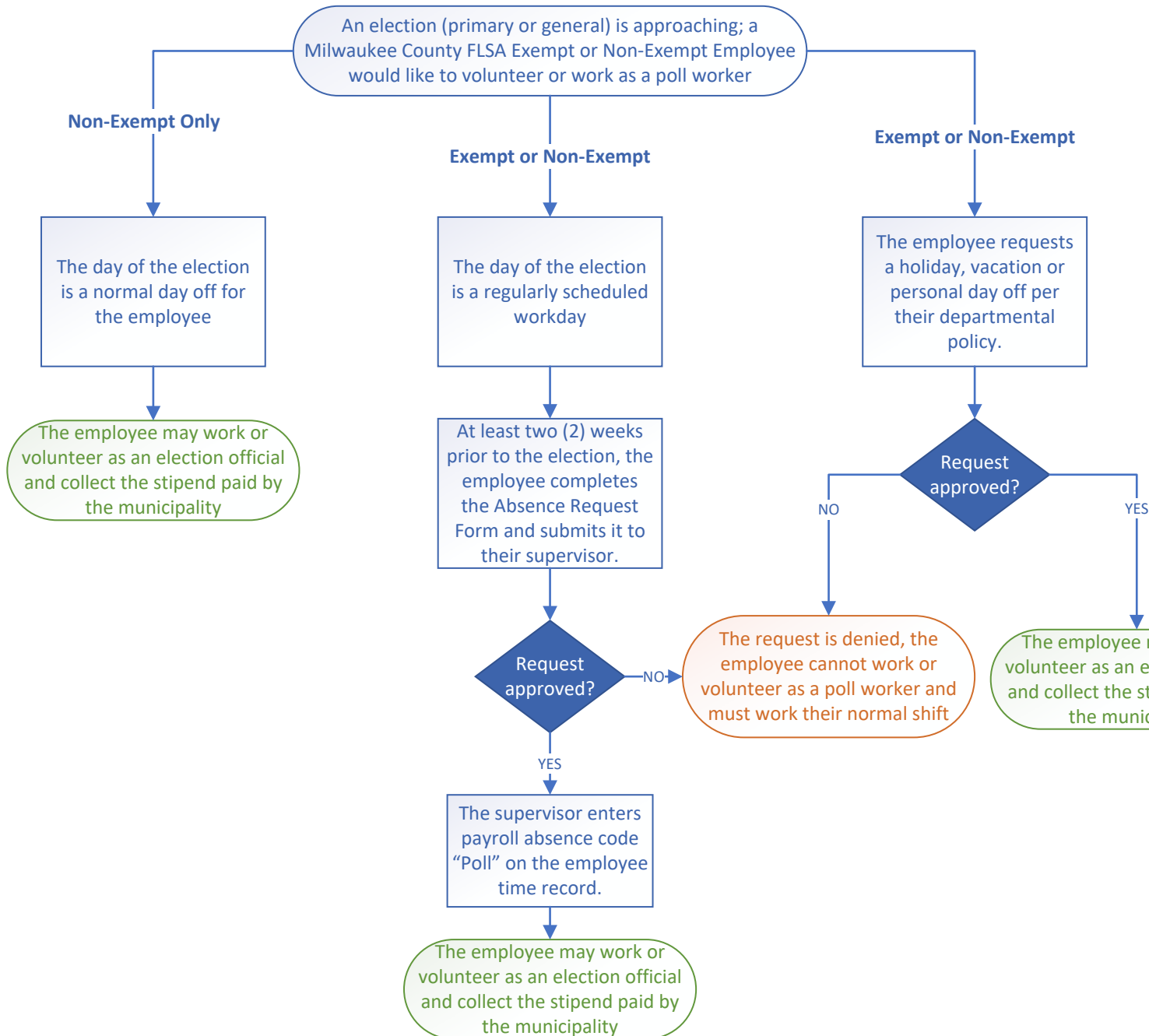


AMOP 02.03.08 Flowchart - Poll Worker & Volunteer Time During Elections Procedure



During even numbered years, the November Election Day is considered a minor holiday and this policy does not apply.

During this time, employees may take this day off with pay OR work and receive a floating holiday for future use. If an employee chooses to work their normal shift, they cannot volunteer or work as an election official.



For information on how to become a Poll Worker, visit the Wisconsin Election Commission website, e-mail elections@wi.gov or call (608) 266-8005