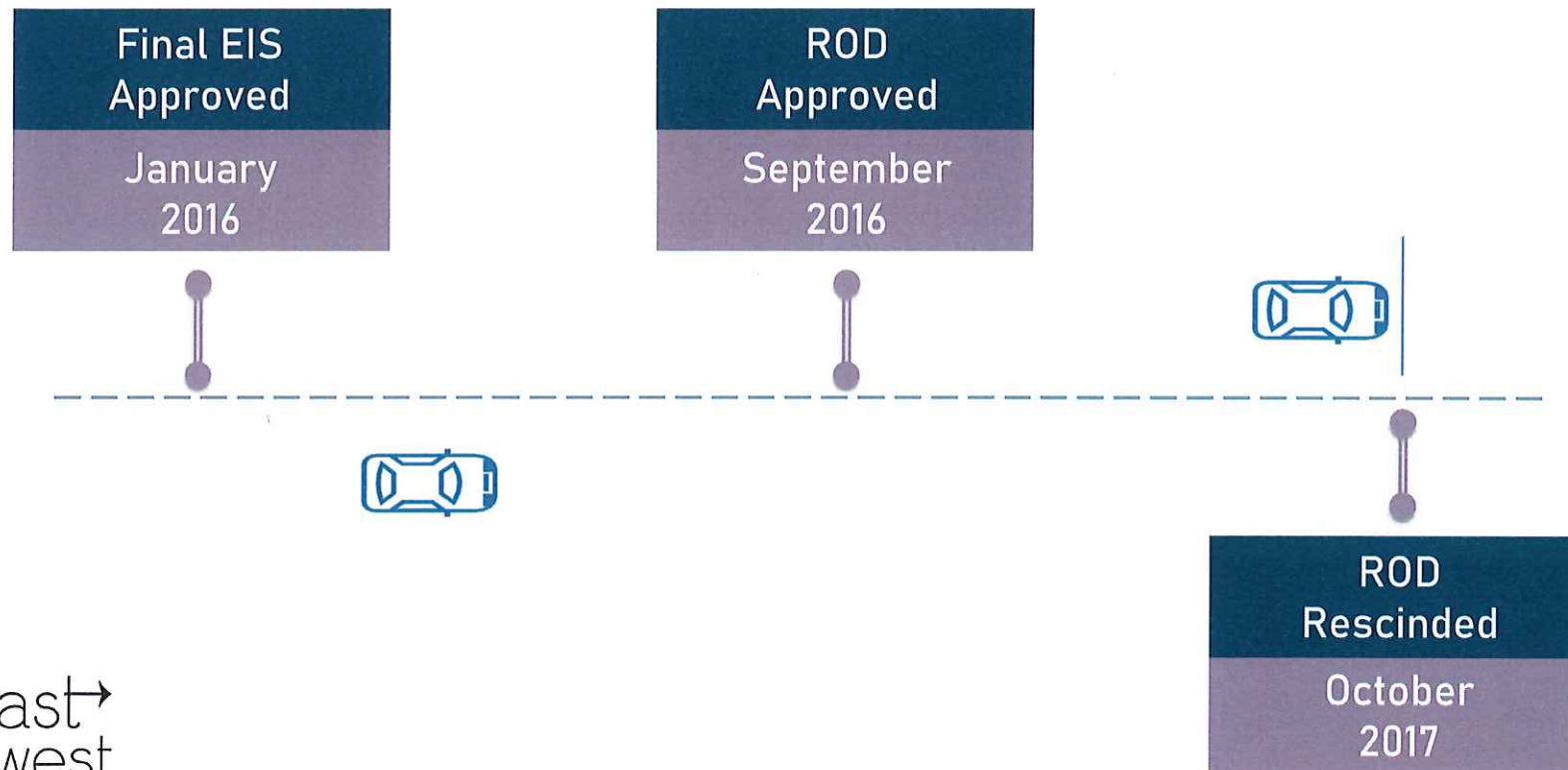


I-94 EAST-WEST UPDATE

Wisconsin Department of Transportation

Previous Effort



Restart of I-94 East/West Study

- Confirm what was previously established
 - Not a complete restart
- **Goal →** Keep previous preferred alternative
 - Will re-evaluate as needed
- Not pursuing Double-Decker option at cemetery
- Investigate additional transit opportunities

Current Efforts

- Data Collection contract approved in June 2020

- Scope includes:

- Survey
- Traffic Studies
- HazMat and ArchHistory Investigations
- Begin PI Outreach

- Evaluating changes in environment

- Potential design changes based on new standards

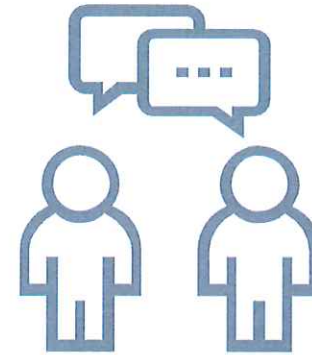
- Re-evaluation of EIS

- Department is working with FHWA to help determine what documentation is needed to re-sign ROD



Public Involvement

- Proactive approach
 - thorough effort throughout the study process
- Kick-off meetings with local officials in progress
- Expanded outreach to citizens/neighborhood groups once further along in study
- Business Advisory Committee / Transit Advisory Committee
- Emphasis on DBE businesses and workforce development





- ▶ Technical Advisory Committee
- ▶ Community Advisory Committee
- ▶ Online survey

→ **100** + group meetings

→ **5** public info. meetings

→ **2** formal hearings

Stakeholders

NAACP
MICA
ACLU

MARQUETTE
UNIVERSITY

MMAC

HARLEY
HQ

MILLER
COORS

STORY HILL
NEIGHBORHOOD

MILLER
PARK

HUNGER
TASK FORCE

VETERANS
AFFAIRS

MENOMONEE
VALLEY

POTOWATOMI
CASINO

Located entirely in the city of Milwaukee, with close proximity to Wauwatosa, West Allis and West Milwaukee.

Next Steps

- Finalize EIS / ROD once process is determined
- Continue public involvement
- Utility feasibility studies
- Preliminary / Final design to follow
- Legislative action needed for enumeration/funding in next state budget

east→
←west



Almost half of Wisconsin's exports exit the state through the southeast. Making it easier and faster for freight trucks and delivery vehicles to get through the East-West corridor will make businesses all over Wisconsin more competitive.

-WisDOT Secretary-designee
Craig Thompson



Anticipated Schedule

- Finalize ROD in mid-2021 [if supplemental EIS not needed]
 - Mid-late 2022, if needed
- Preliminary / Final Design
 - 2021 – 2026
- Construction timeline based on funding
 - Could start as early as 2023/2024





I-94 EAST-WEST UPDATE

east →
← west

I-43 REHABILITATION/ RECONSTRUCTION

CAPITOL DRIVE TO HAMPTON AVENUE



1228-22-01/71

(Capitol Drive to 2100 feet north of Hampton Avenue)



I-43 North-South



PROJECT PURPOSE

- Built between 1959 and 1962
- Address deteriorating bridge and pavement conditions
- Address the most critical needs
- Will not preclude future modernization needs
- Safety and operation needs will be addressed within the context of the pavement and structural deficiencies

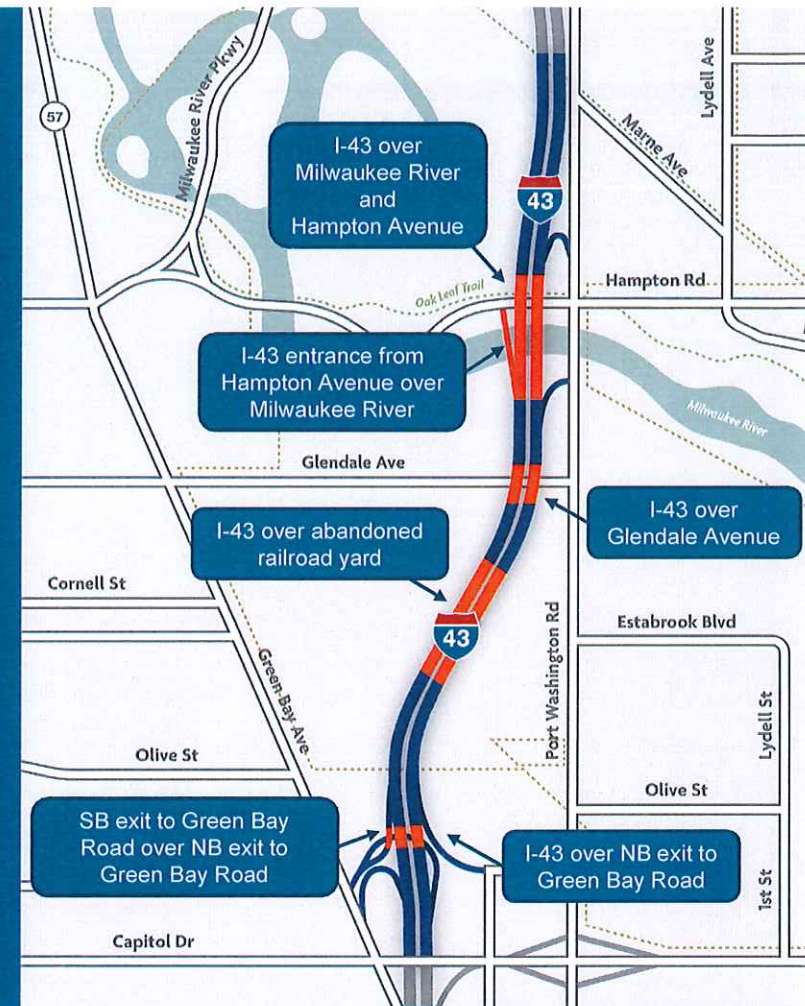


I-43 North-South



PROJECT PURPOSE - BRIDGES

- SB exit to Green Bay Road over NB exit to Green Bay Road
- I-43 over NB exit to Green Bay Road
- I-43 over abandoned railroad yard
- I-43 over Glendale Avenue
- I-43 entrance from Hampton Avenue over Milwaukee River
- I-43 over Milwaukee River and Hampton Avenue

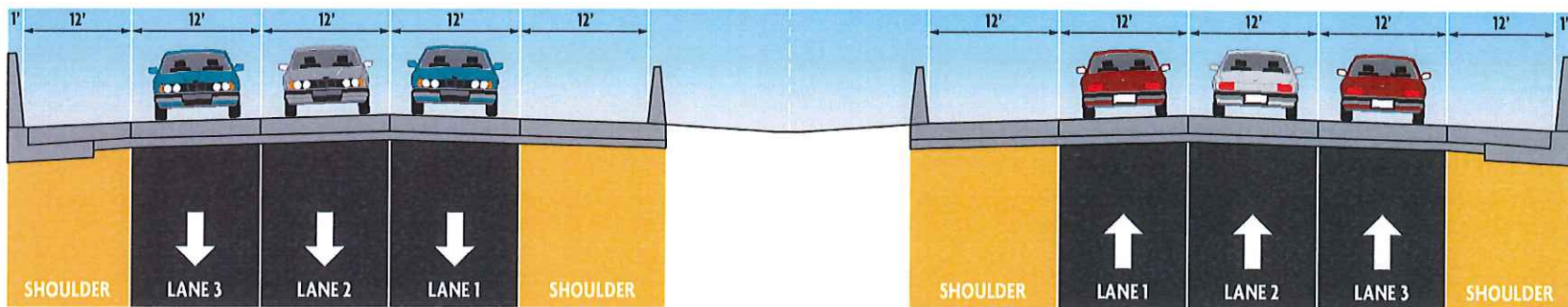


I-43 North-South



PREFERRED ALTERNATIVE

Build Alternative Rehabilitation



TYPICAL SECTION

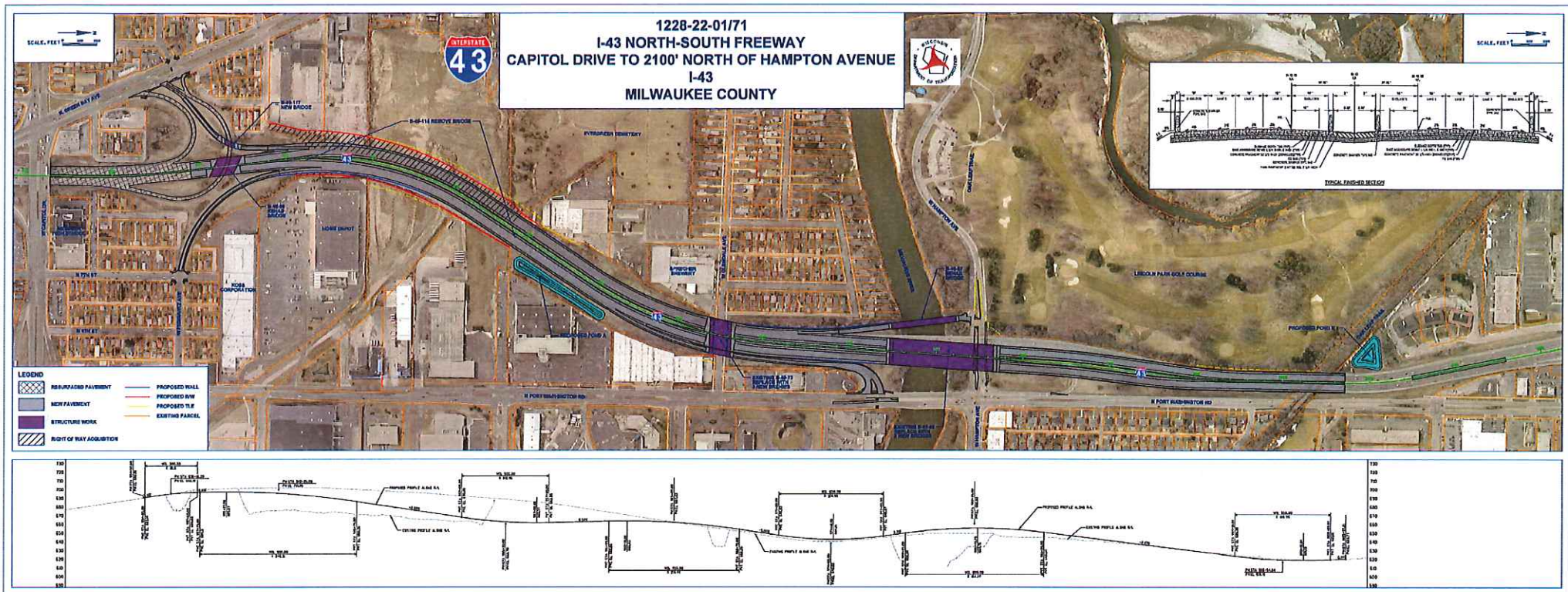
- Rehab or replace bridges
- Remove bridge over abandoned railroad yard
- Replace pavement
- Add auxiliary lane between Capitol Drive and Hampton Avenue
- Remove northbound exit to westbound Hampton Avenue
- Replace existing noise wall
- Construct two stormwater ponds on existing right of way



I-43 North-South



Public Involvement Display



I-43 North-South



Public meetings and outreach

- Local officials meeting – August 13, 2019
- Public Involvement meeting – August 22, 2010
- Virtual noise meeting materials – May 2020
- Businesses and community groups:
 - Sprecher Brewery
 - Javic Wholesale
 - 5 Points Neighborhood Assoc.
 - Columbia College of Nursing
 - Home Depot
 - Maglio
 - Messmer High School
 - City of Milwaukee DPW
 - City of Milwaukee DCD
 - Milwaukee County DPW
 - Milwaukee County Parks
 - Beerline Trail Leadership
 - Ald. Coggs
 - Ald. Hamilton
 - Ald. Stamper
 - City of Glendale DPW
 - North Shore Rotary Club
 - On-going calls, emails, with residents



I-43 North-South



ANTICIPATED SCHEDULE

- 2019-early 2020
 - Public Involvement process
 - Environmental Study
 - Preliminary Roadway Plan Completion
 - Noise barrier public process
- 2020
 - Final roadway plans and structure plans
- 2021-2023
 - Construction



I-43 North-South



I-43 REHABILITATION/ RECONSTRUCTION

BROWN STREET TO CAPITOL DRIVE



1228-22-00
(Brown Street to Capitol Drive)



I-43 North-South



PROJECT PURPOSE

- Originally built in 1965
- Last resurfaced in 2002
- Address deteriorating bridge and pavement conditions
- Operational Improvements

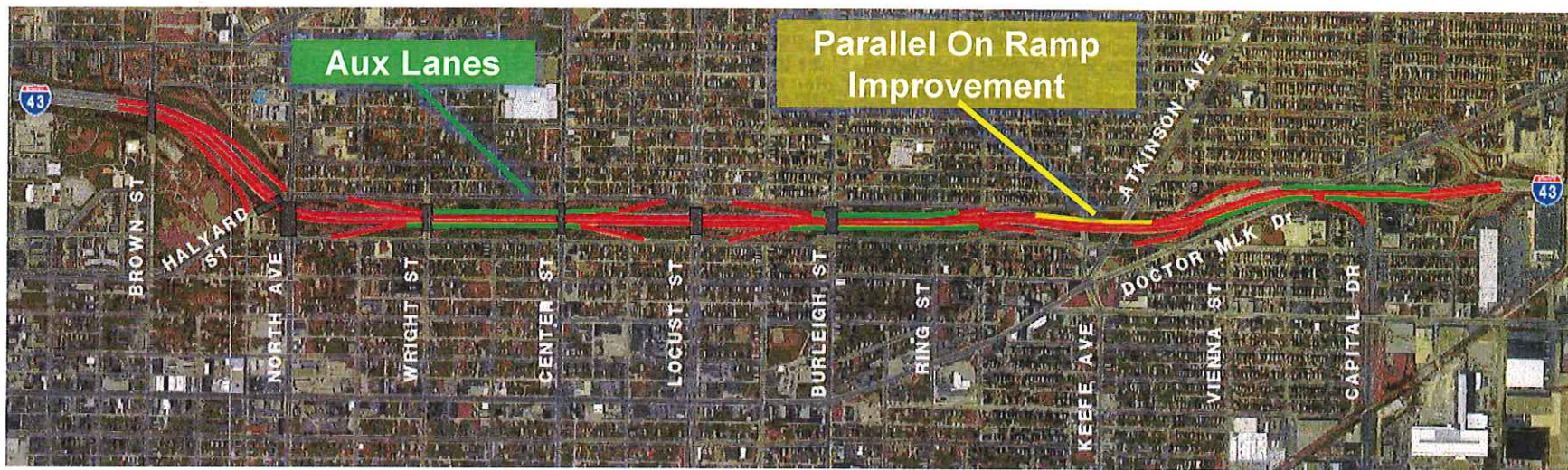


I-43 North-South



PREFERRED ALTERNATIVE

Build Alternative Rehabilitation



- Rehab bridges
- Mill and overlay existing pavement
- Auxiliary lane and parallel on-ramp improvements



I-43 North-South



BRIDGE REHABILITATION

- Brown Street over IH 43 – Concrete Deck Overlay and Paint
- Wright Street over IH 43 – Concrete Deck Overlay and Paint
- Center Street over IH 43 – Paint
- Locust Street over IH 43 – Deck Replacement and Paint
- Burleigh Street over IH 43 – Deck Replacement and Paint



I-43 North-South



ANTICIPATED SCHEDULE

- 2020
 - Public Involvement process
 - Environmental Study
 - Preliminary Roadway Plan Completion
- 2021
 - Final roadway plans and structure plans
- 2024
 - Construction (could be accelerated to 2022)



I-43 North-South



DBE Opportunities

- Trucking
- Erosion control
- Traffic control
- Landscaping
- Construction support
- Inspection
- Supplies
- Signage
- Painting
- Staining



I-43 North-South



Community Benefit Features

- Underpass Accommodations for the Beerline Bicycle Trail
 - Access for North Side residents to Riverwest and Downtown
- Noise Wall Construction
- Bridge rehabilitation helps prolong vehicle/pedestrian access across freeway



I-43 North-South

