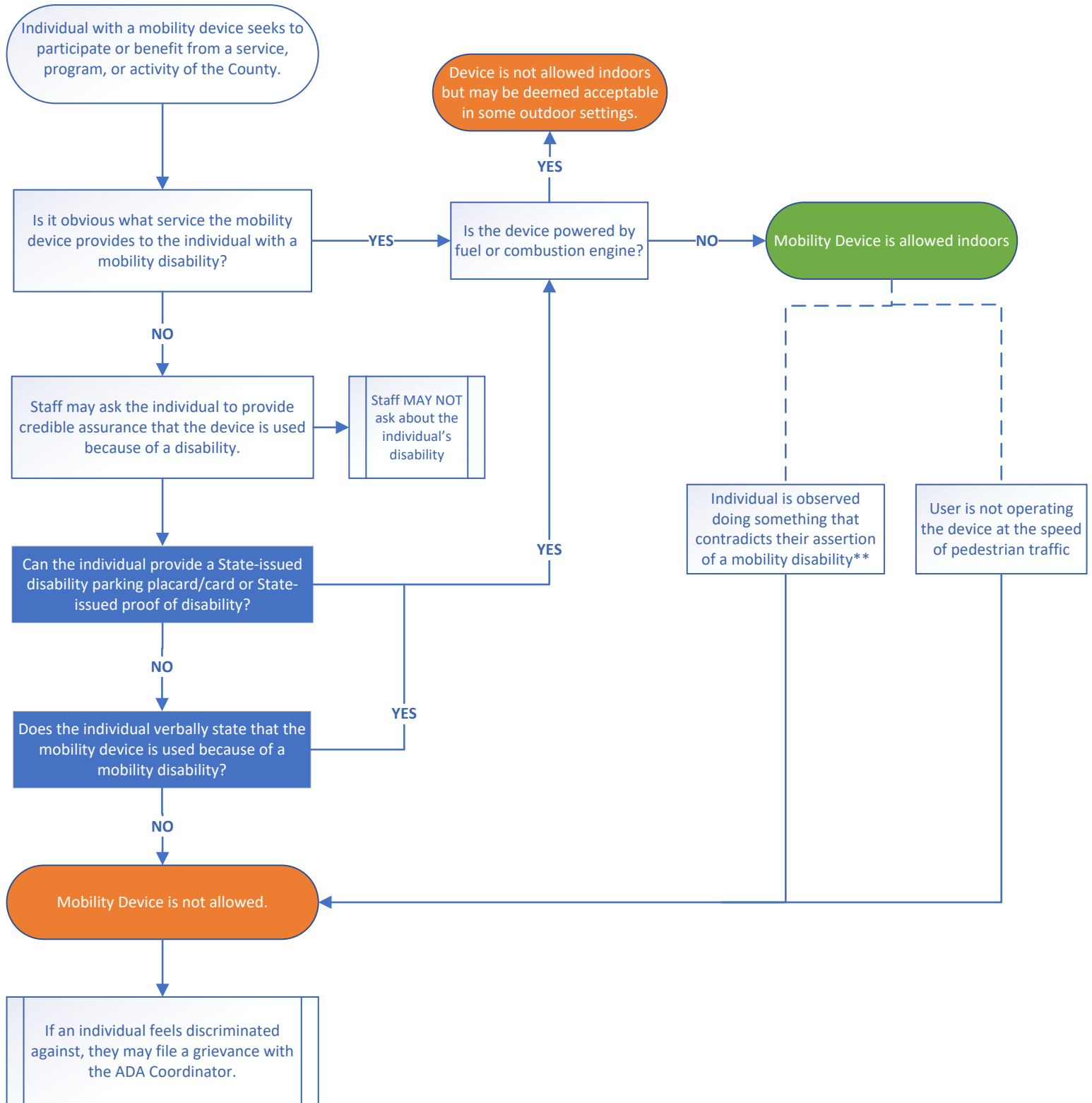


09.03 Flowchart Is the Mobility Device Allowed?



**However, it is very important for Milwaukee County and staff to understand that the fact that a person with a disability is able to walk for a short distance does not necessarily contradict a verbal assurance -- many people with mobility disabilities can walk, but need their mobility device for longer distances or uneven terrain. This is particularly true for people who lack stamina, have poor balance, or use mobility devices because of respiratory, cardiac, or neurological disabilities.