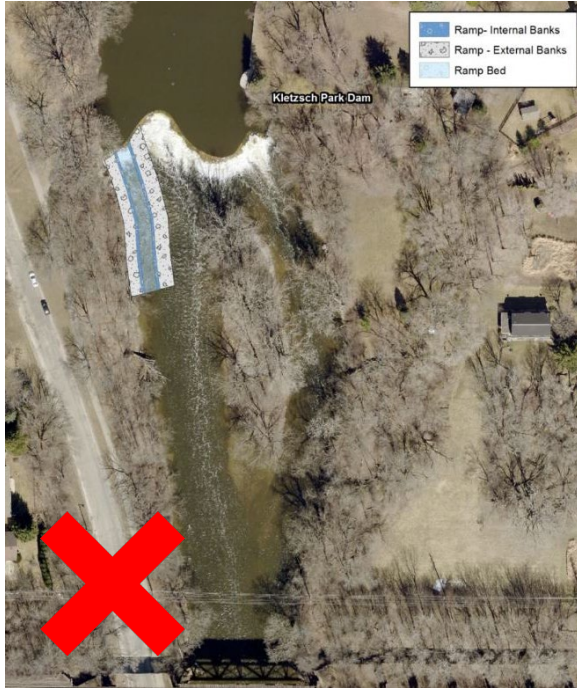


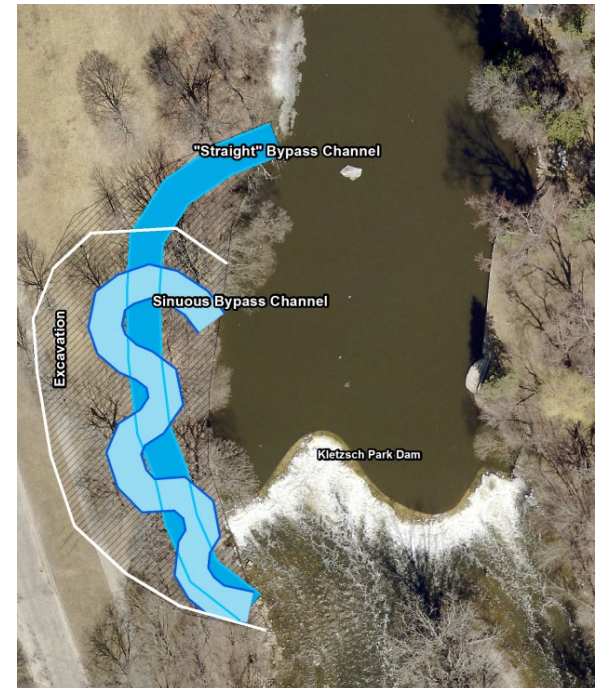
# INITIAL CONCEPTS



**West bank downstream  
rock ramp/step pool  
fish passage**  
(3 alternatives)



**West bank step-pool fish  
passage with channel &  
dam modification**  
(3 alternatives)

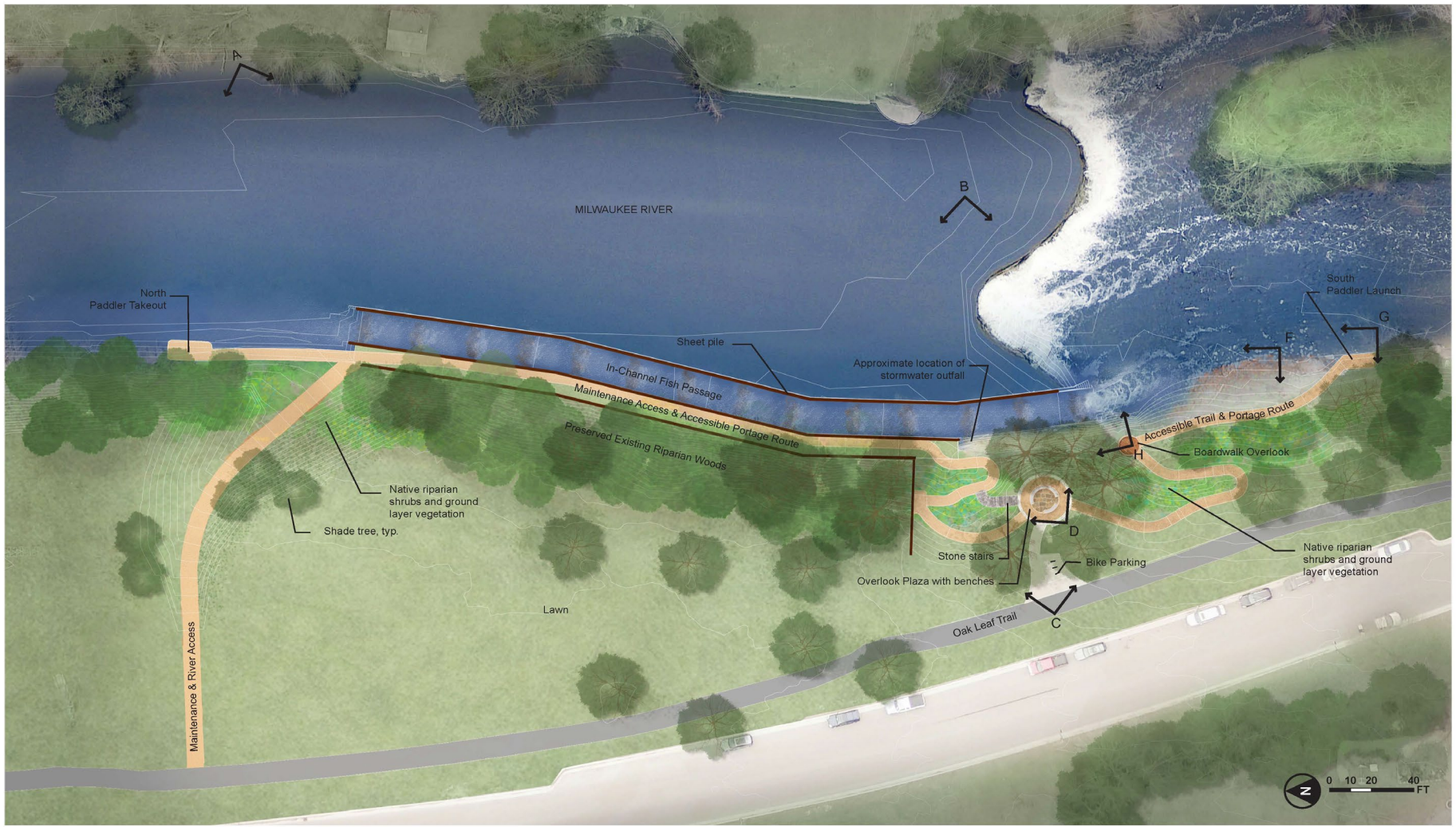


**West bank step-pool  
bypass fish passage**  
(4 alternatives)





# PREFERRED FINAL CONCEPT





# VIEW: IN-RIVER FISH PASSAGE





# VIEW: RIVER ACCESS & PORTAGE





# VIEW: LOWER OVERLOOK

