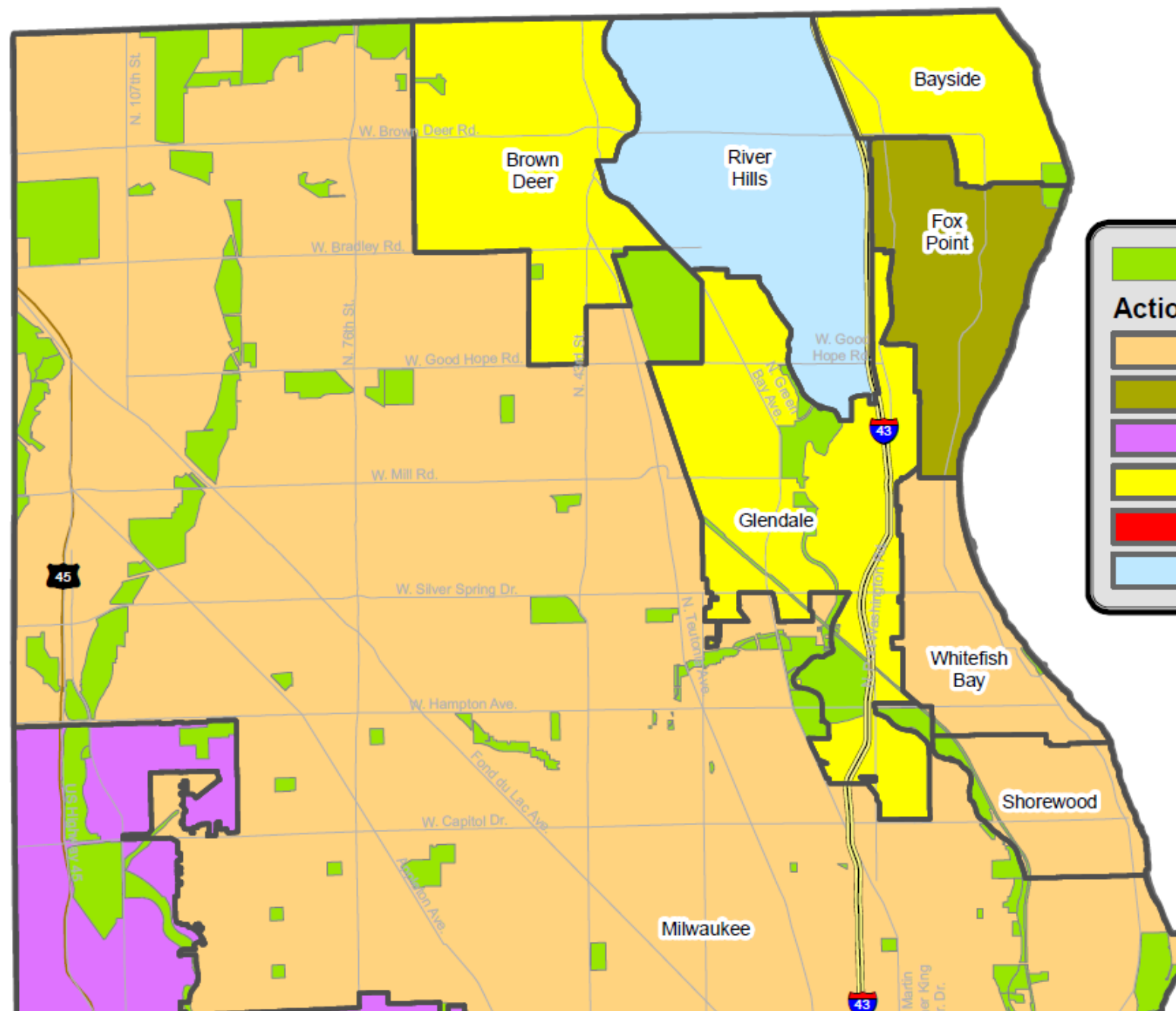


2017 Park Zoning Status

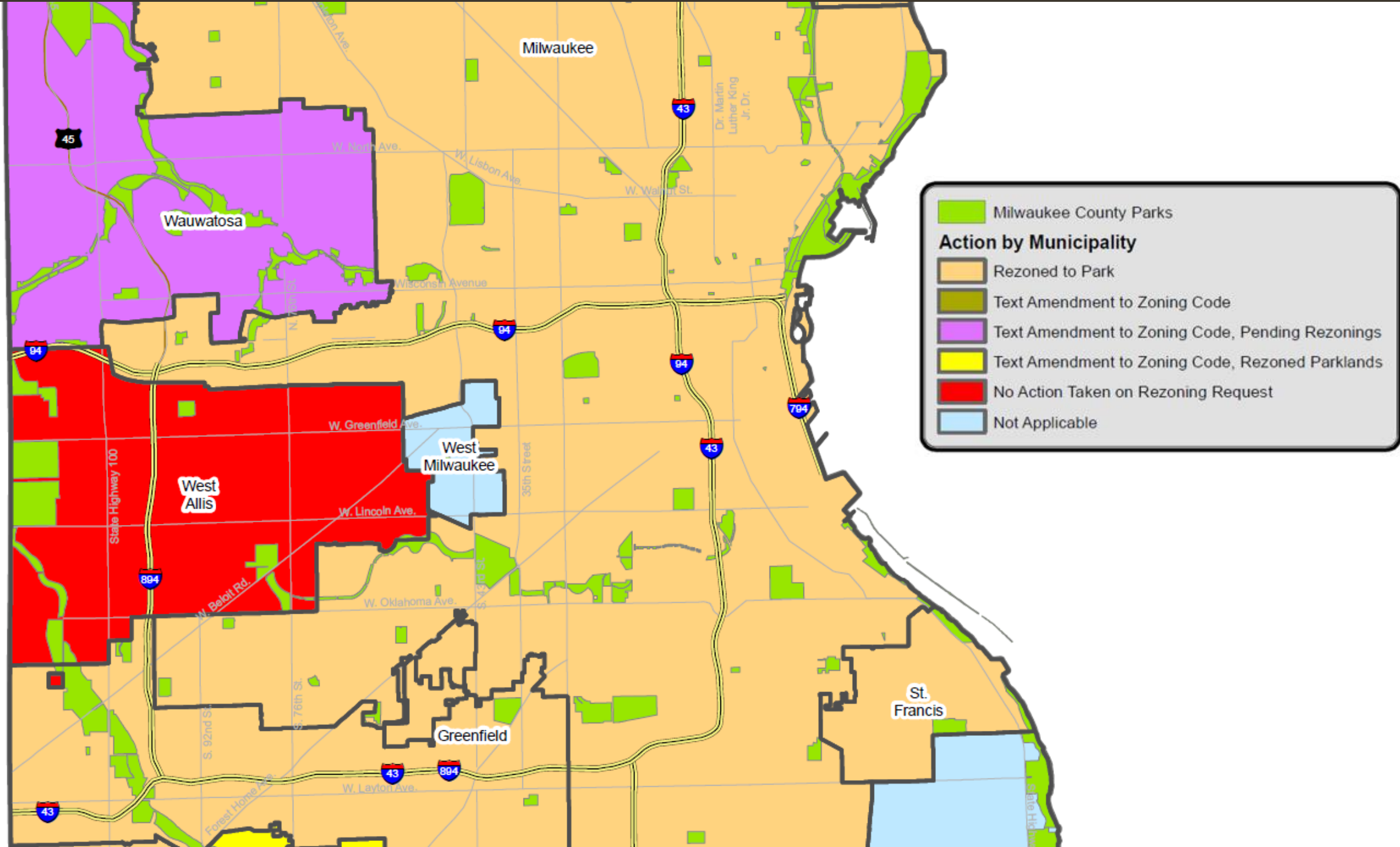
- Of the 19 municipalities, 15 took action to rezone Milwaukee County parkland to Park, or equivalent
 - 3 municipalities did not require rezoning action
 - 1 municipality did not take action
- Summary of Final Action
 - 928 Parcels in the Milwaukee County Park System
 - 545 had existing park zoning
 - 380 parcels were requested to be rezoned

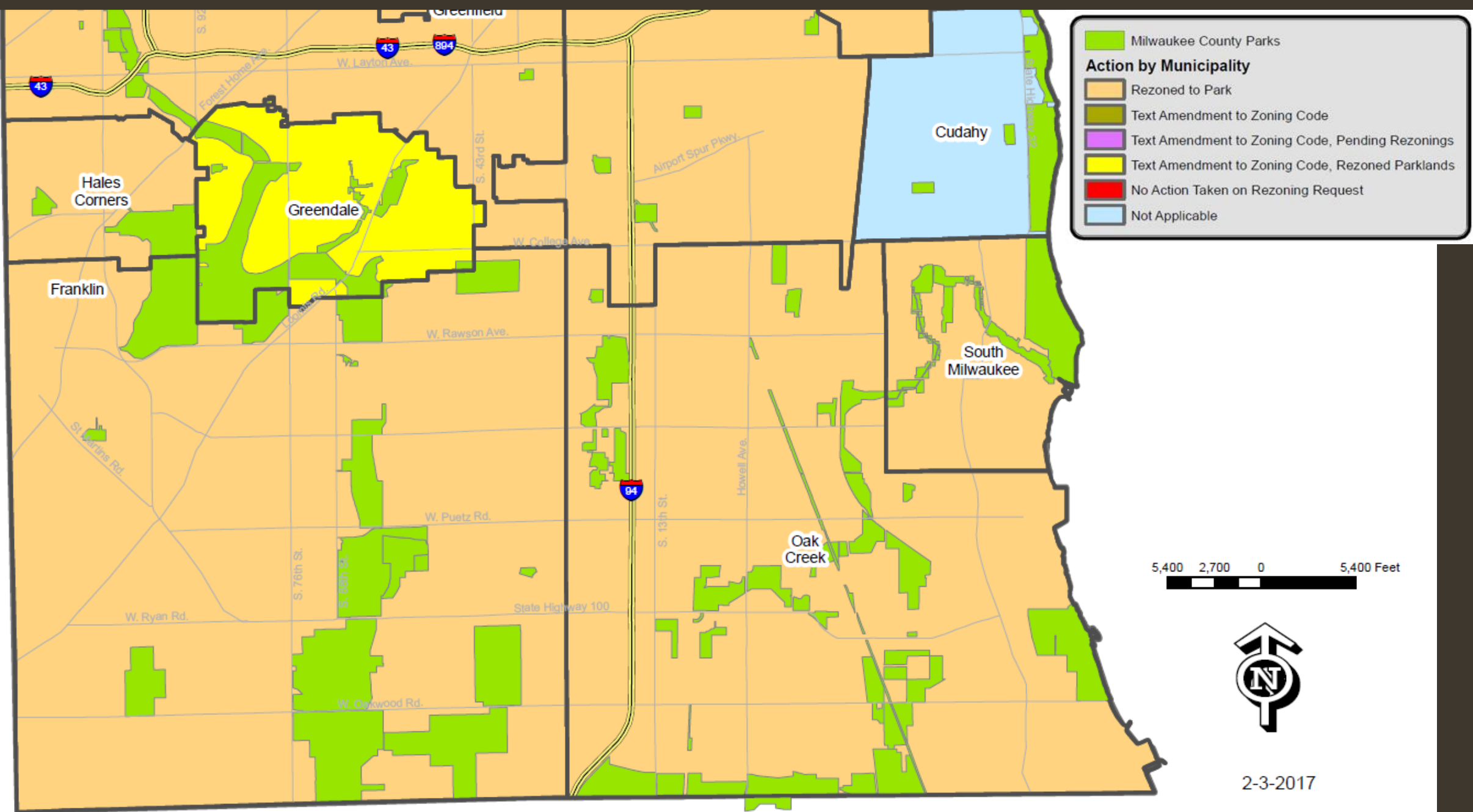
Action Summary by Local Municipality

MILWAUKEE COUNTY PARK ZONING ACTION BY MUNICIPALITY 2016-2017



- Milwaukee County Parks**
- Action by Municipality**
- Rezoned to Park
 - Text Amendment to Zoning Code
 - Text Amendment to Zoning Code, Pending Rezonings
 - Text Amendment to Zoning Code, Rezoned Parklands
 - No Action Taken on Rezoning Request
 - Not Applicable





Action Summary by Local Municipality

Municipality	Status	Action	Date(s) of Action	Notes
<i>Bayside</i>	Complete	Created a park zoning district in the municipal code, and assigned park zoning to requested DPRC lands.	2/25/2016	
<i>Brown Deer</i>	Complete	Created a park zoning district in the municipal code, and assigned park zoning to requested DPRC lands. Also codified a text amendment to recognize that lands owned by Milwaukee County zoned conservancy are to be considered as zoned park for the purposes of Wis Stats. 59.17(2)(b)(3).	3/7/2016 and 4/18/2016	
<i>Cudahy</i>	N/A	N/A	N/A	All DPRC lands have existing park zoning.

Action Summary by Local Municipality

Municipality	Status	Action	Date(s) of Action	Notes
<i>Fox Point</i>	Complete	Adopted an amendment to the zoning code stating that Doctors Park <i>"is located in the F Institutional District and is hereby zoned as a park, to the full extent and meaning of the words "zoned as a park" in § 59.17(2)(b)(3), Wis. Stats."</i>	4/12/2016	
<i>Franklin</i>	Complete	Rezoned requested parcels to P-1 Park Zoning District.	4/19/2016 and 6/28/2016	Any parcels currently zoned FW Floodway District and/or FC Floodplain Conservancy District retained the same zoning along with P-1 Park Zoning District. Parcels entirely zoned FW or FC were not rezoned. Two parcels that are a part of The Rock were not rezoned because they are a part of an existing PDD (Planned Development District).

Action Summary by Local Municipality

Municipality	Status	Action	Date(s) of Action	Notes
Glendale	Complete	Amended conservancy zoning district to include: <i>(f) Parcels owned by Milwaukee County. Any parcel that is owned by Milwaukee County in a C-1 Conservancy District is considered to be zoned as a park for the purposes of Wisconsin Statutes Section 59.17(2)(b)(3).</i> Also took action to assign conservancy zoning to all DPRC lands that previously had residential zoning assigned.	2/26/2016 and 5/9/2016	
Greendale	Complete	Created a park zoning district in the municipal code, and assigned park zoning to the requested DPRC lands withing Greendale.	5/17/2016	
Greenfield	Complete	Rezoned requested parcels to PR Park Zoning District	4/12/2016	
Hales Corners	Complete	Reassigned a portion of Whitnall Park incorrectly assigned as right-of-way to park use on the comprehensive plan, and rezoned it to P-1 Park.	8/8/2016	

Action Summary by Local Municipality

Municipality	Status	Action	Date(s) of Action	Notes
<i>Milwaukee</i>	Complete, see notes	Requested DPRC lands rezoned to Parks.	3/29/2016 and 7/26/2016	DPRC lands that did not have an assigned taxkey # were not rezoned (9 parcels).
<i>Oak Creek</i>	Complete, see notes	Requested DPRC lands rezoned to Parks.	4/19/2016	Parcel #9549984002, at 715 Oakwood Road was not rezoned by the City "...because it may prove to be some use for neighboring parcels."
				Rezoning action excluded C-1: Shoreland Wetland Conservancy, FW: Floodway, and FF: Flood Fringe Districts.
<i>River Hills</i>	N/A	N/A	N/A	No DPRC land
<i>Shorewood</i>	Complete	Rezoned requested parcels to P-3 Park Preservation Zoning District.	11/21/2016	

City of Milwaukee – Noted Parcels – ROW vs parkland

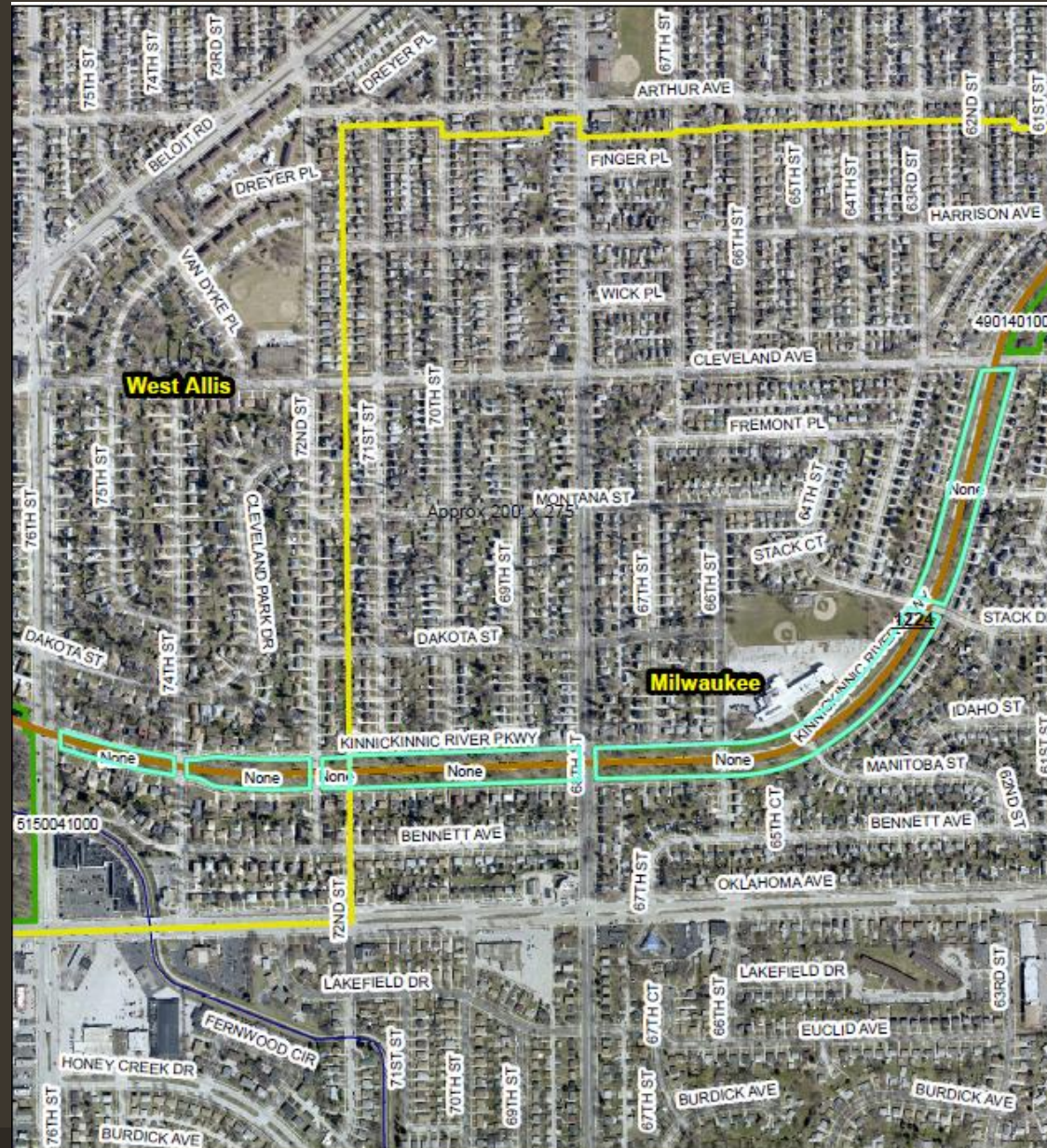


Bradford Beach Parcel - No Tax Key

City of Milwaukee – Noted Parcels – ROW vs parkland



City of Milwaukee – Noted Parcels – ROW vs parkland



City of Milwaukee – Noted Parcels – ROW vs parkland

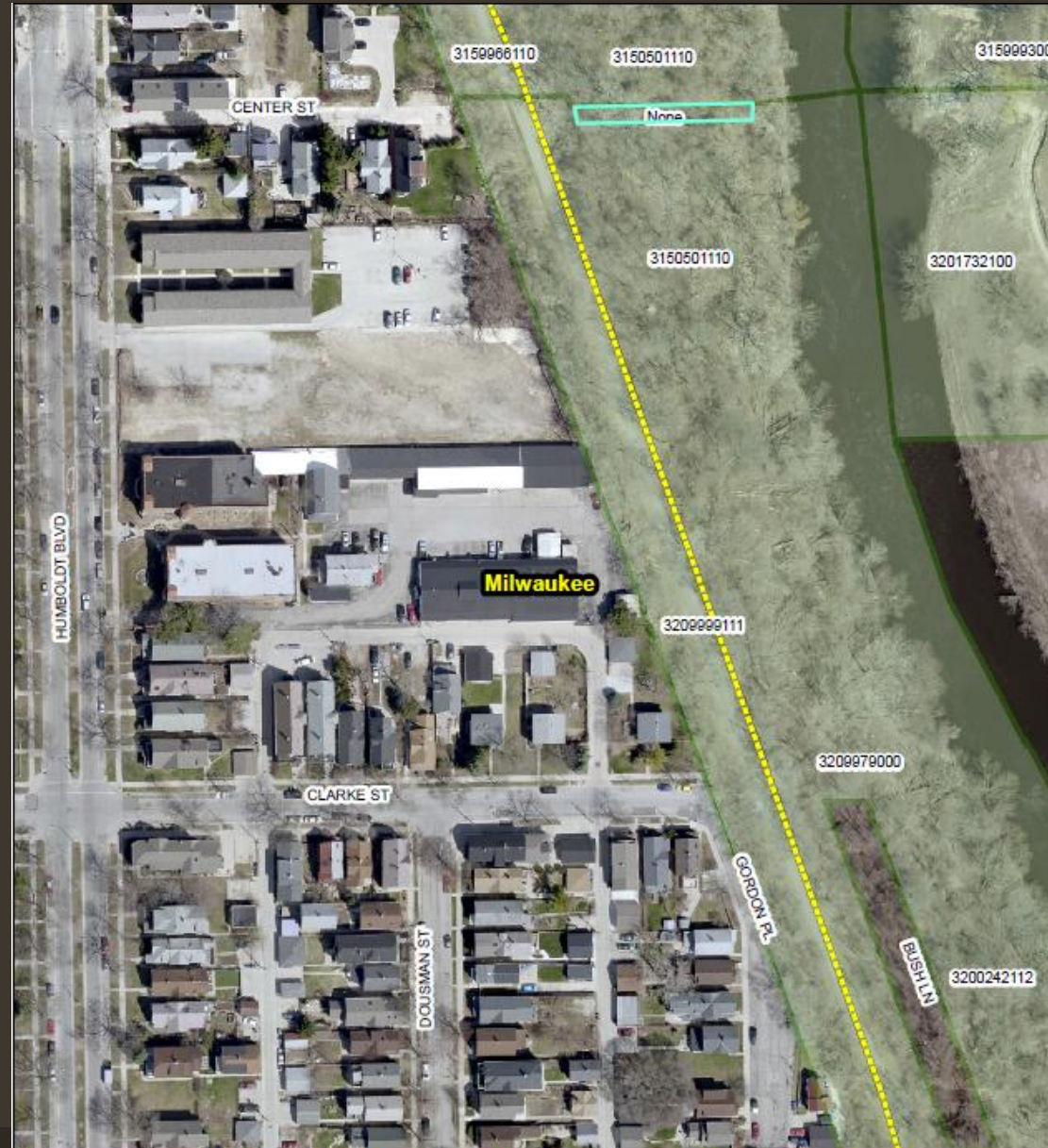


Menomonee River Parkway - Parcel without Tax Key #

City of Milwaukee – Noted Parcels – ROW vs parkland



City of Milwaukee – Noted Parcels – ROW vs parkland



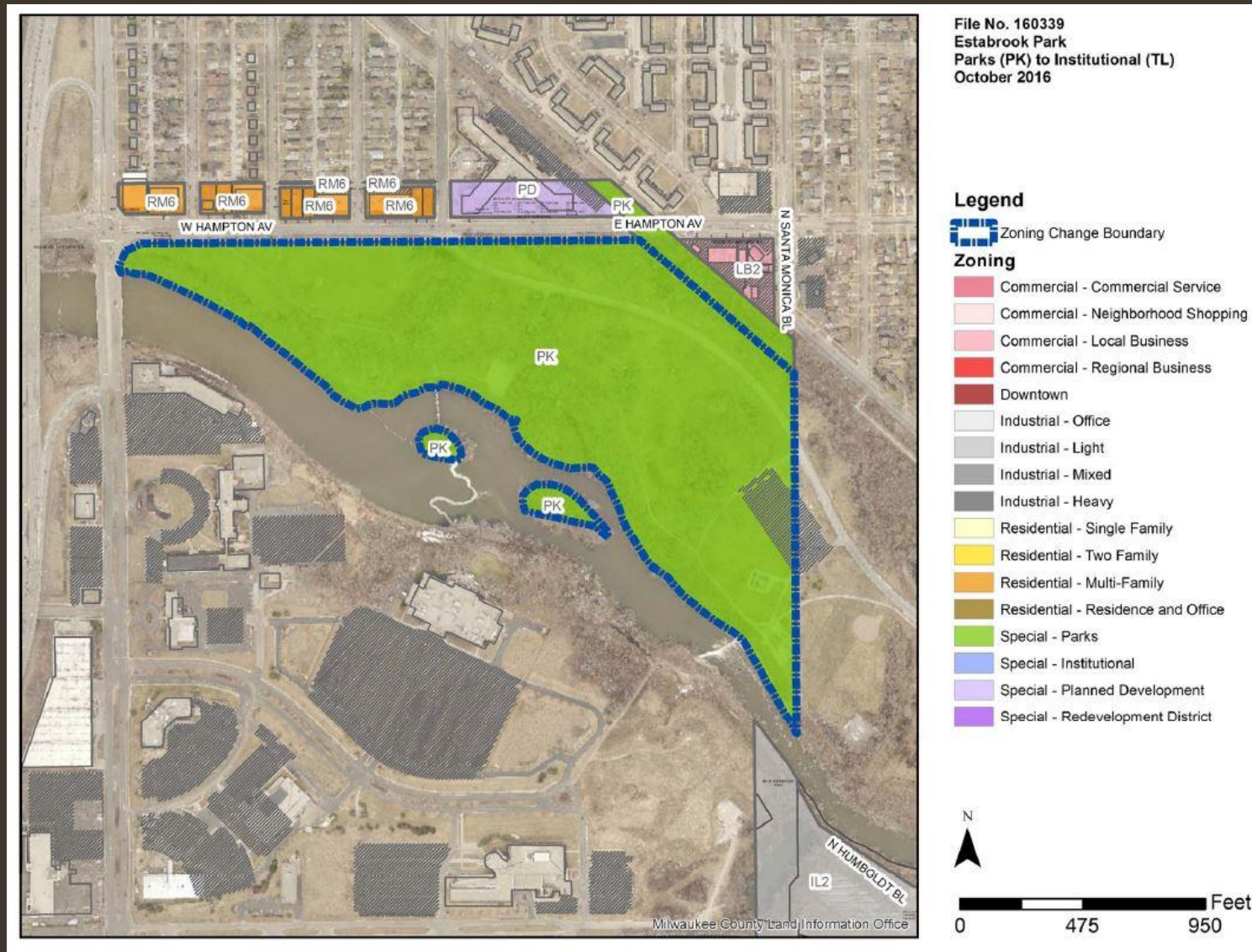
Milwaukee River Parkway - Milwaukee - Parcel without Tax Key #

City of Milwaukee – Noted Parcels – ROW vs parkland

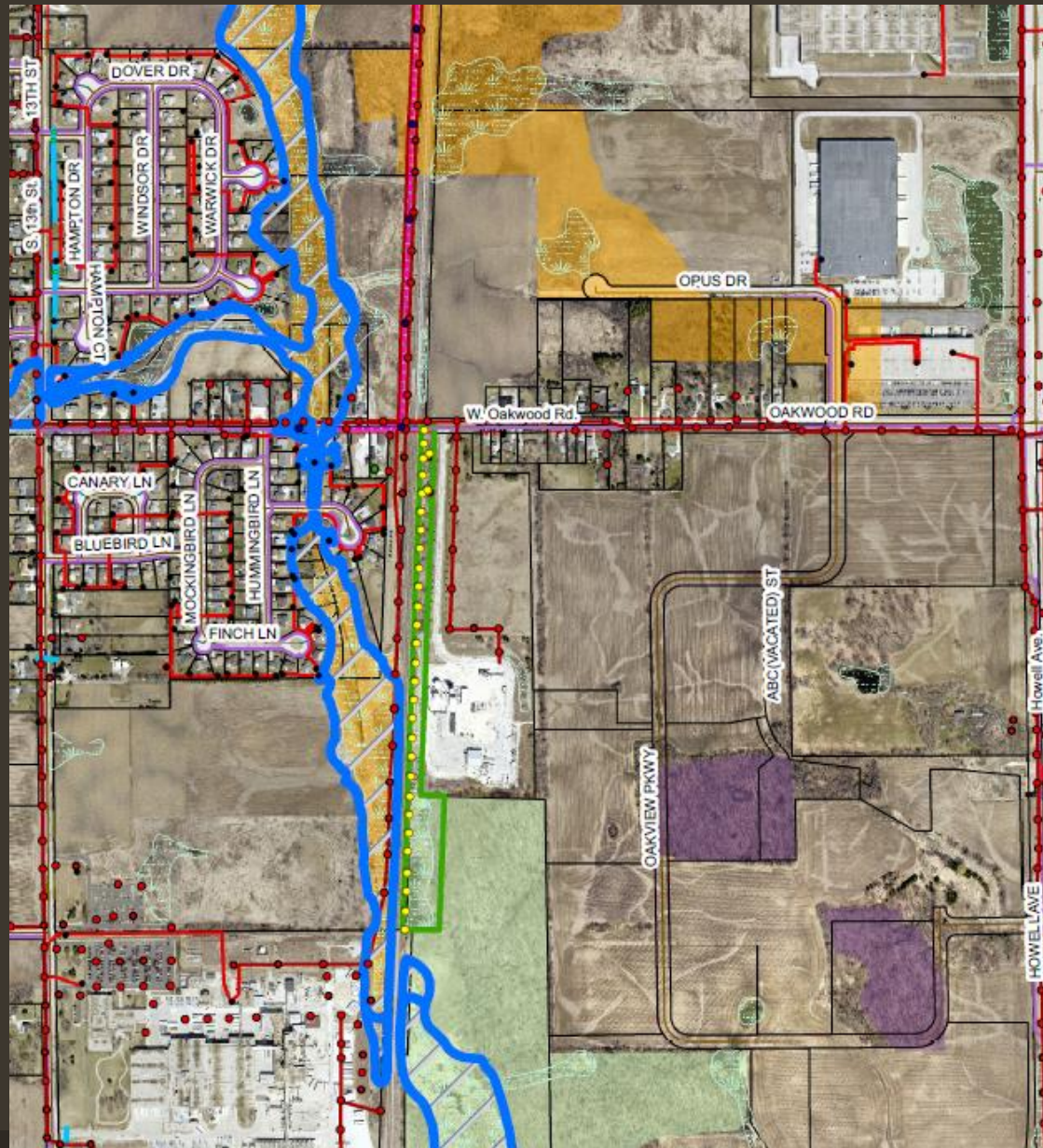


Story Parkway - Milwaukee - Parcel without Tax Key #

City of Milwaukee – November 18, 2016 Rezoning



City of Oak Creek – Noted Parcel – Industrial Zoning



Oak Creek Parcel - Tax Key 9549984002

Action Summary by Local Municipality

Municipality	Status	Action	Date(s) of Action	Notes
<i>South Milwaukee</i>	Complete	Requested DPRC lands rezoned to Park.	5/3/2016	
<i>St. Francis</i>	Complete	Rezoned requested DPRC land to IU-SU(Park or Playground).	3/23/2016	
<i>Wauwatosa</i>	Complete/Pending	Text amendment completed to state that "Any property owned by Milwaukee County in the SP-CON district is considered to be zoned as "Parks" for purposes of Wisconsin Statutes Section 59.17(2)(b)(3)."	5/3/2016	Rezoning of 7 parcels as requested 2/29/2016 is pending, renewed application sent 1/17/2017. Anticipated rezoning to SP_POS (Park and Open Space) should be finalized on April 4, 2017. Two parcels of land have been interpreted as right-of-way, and are not scheduled for rezoning.

City of Wauwatosa – Noted Parcels – Rezones Pending



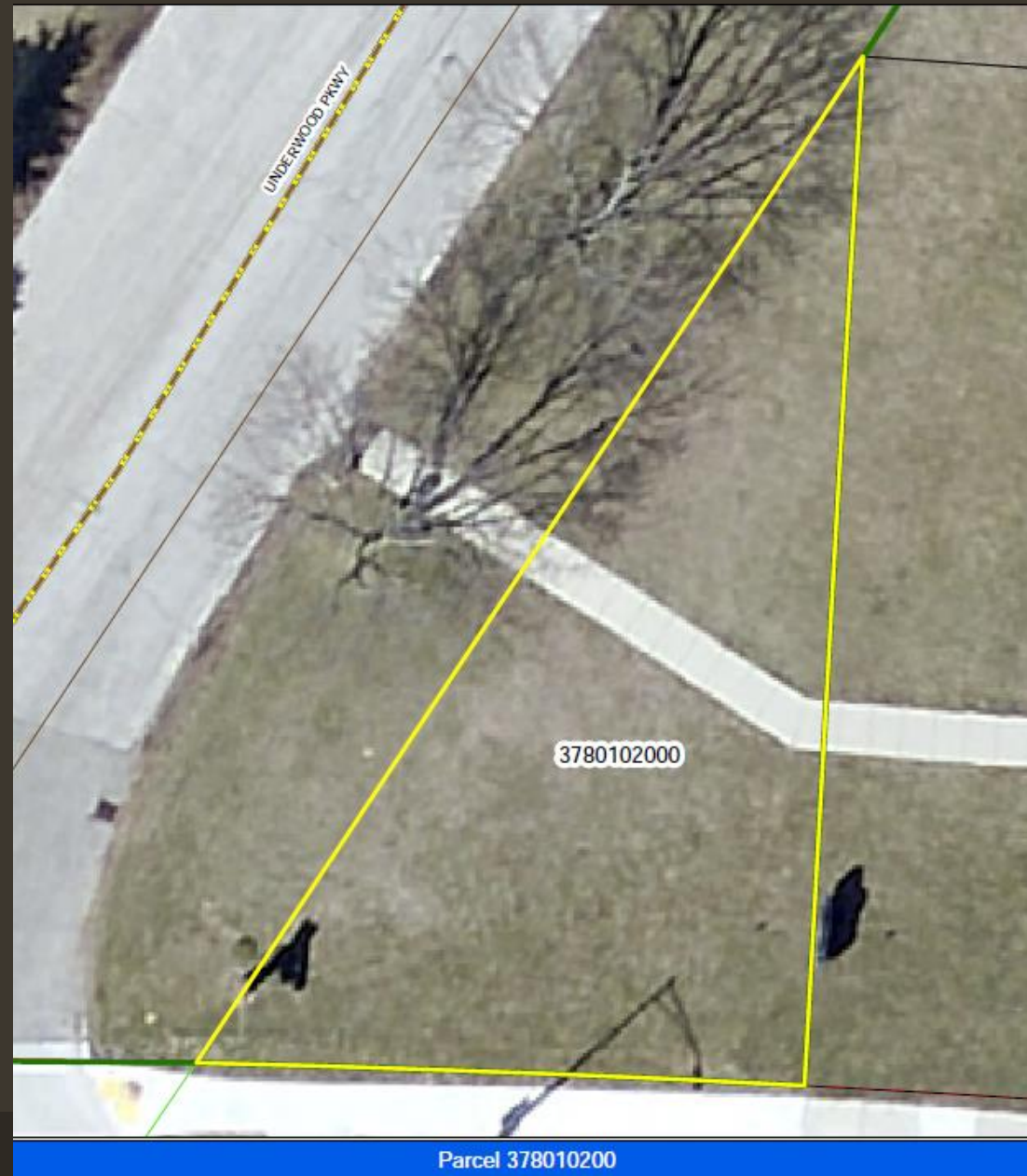
Parcel 260039100

City of Wauwatosa – Noted Parcels – Rezones Pending



Parcel 370050106

City of Wauwatosa – Noted Parcels – Rezones Pending



Parcel 378010200

City of Wauwatosa – Noted Parcels – Rezones Pending



City of Wauwatosa – Noted Parcels – Rezones Pending



Parcel 412022400

City of Wauwatosa – Noted Parcels – Rezones Pending

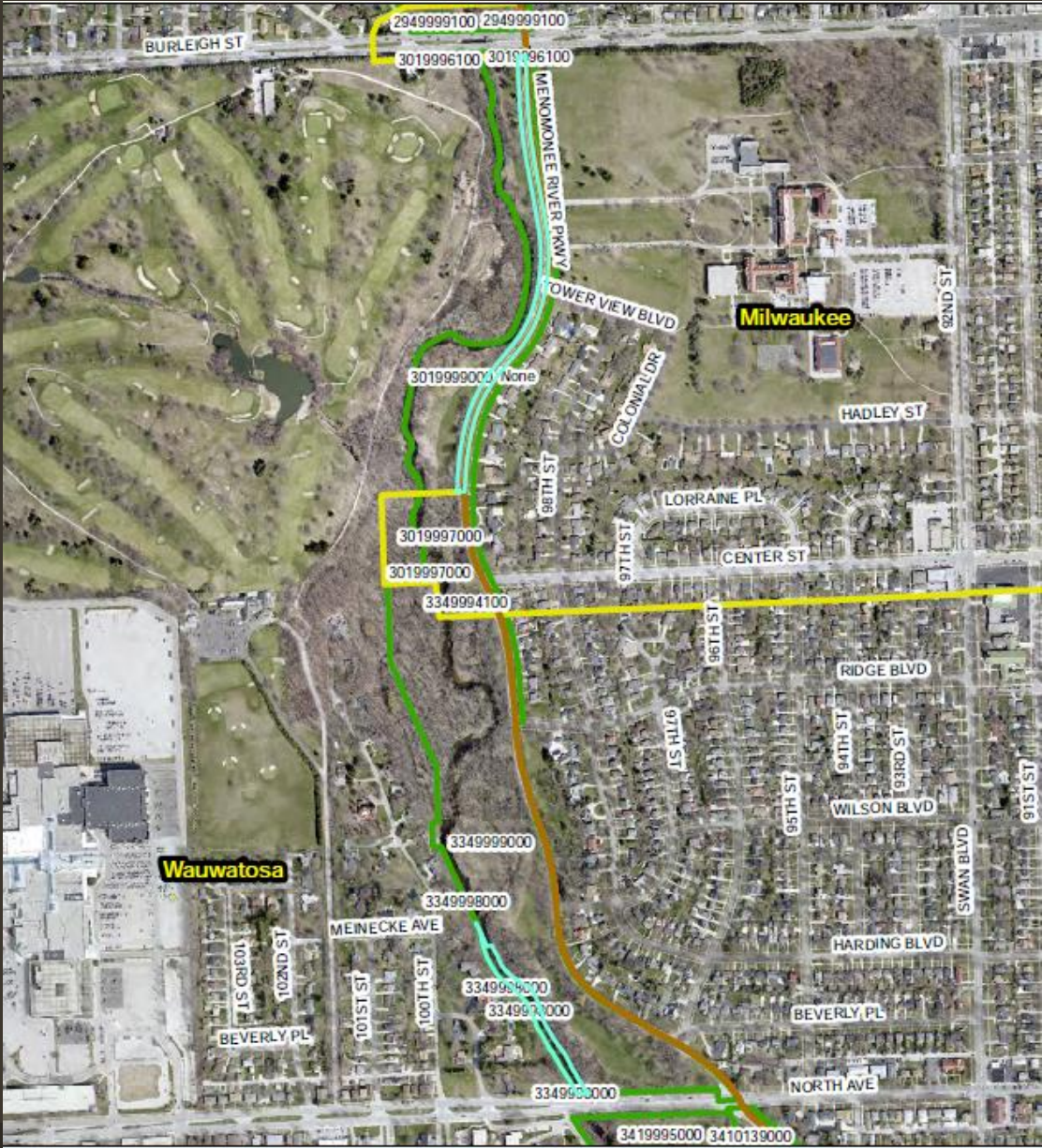


City of Wauwatosa – Noted Parcels – Rezones Pending



Parcel 3710109000

City of Wauwatosa – Noted Parcels – ROW/River vs parkland

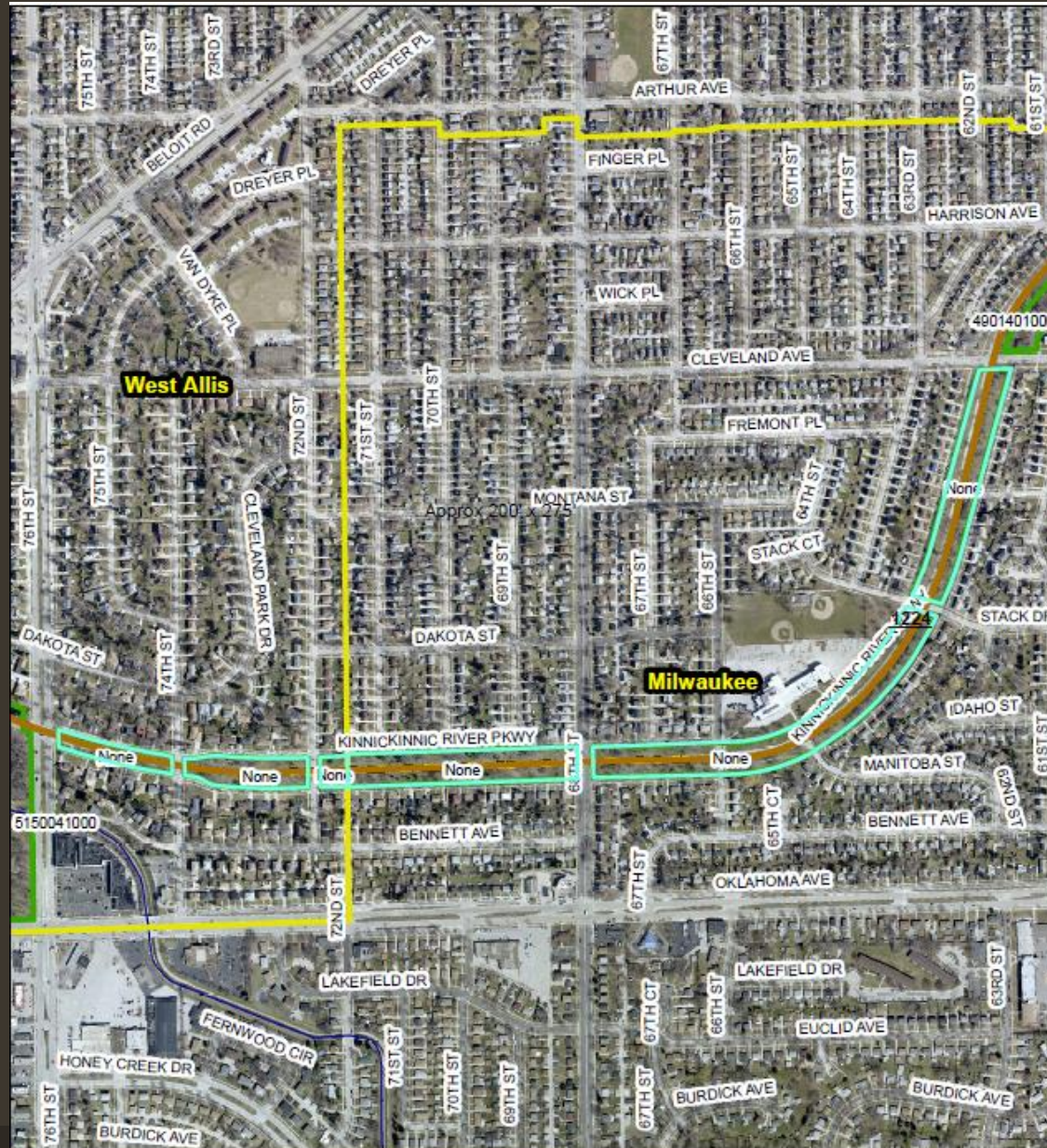


Menomonee River Parkway - Parcels without Tax Key #

Action Summary by Local Municipality

Municipality	Status	Action	Date(s) of Action	Notes
<i>West Allis</i>	Request Denied	Residential zoning districts in place on KK parkway lands were not rezoned to Park (3 parcels).		Correspondence from 4/6/2016 stated that City staff did not agree with rezoning from Residential RB-2 and RA-4, and the matter was not scheduled for action by the City Plan Commission or Common Council.
<i>West Milwaukee</i>	N/A	N/A	N/A	All DPRC lands have existing park zoning.
<i>Whitefish Bay</i>	Complete	Rezoned requested parcels to District 4B-Park District.	3/7/2016	

City of West Allis – Noted Parcels – ROW vs parkland



Kinnickinnic River Parkway - Parcels without Tax Key #s

Final Rezoning Actions - By the Numbers

Rezoning/Text Amendment Status	# of Parcels	% of Park System
N/A - Existing Park Zoning	545	59%
Complete	356	38%
Pending	7	<1%
No Action	17	2%

Other Factors that Protect Parkland to Consider:

- Deed restrictions
- Conservation easements
- Management agreements and leases
- Historical designations
- Environmental conditions, such as wetland and floodplains
- Park and Open Space Plan



Questions