

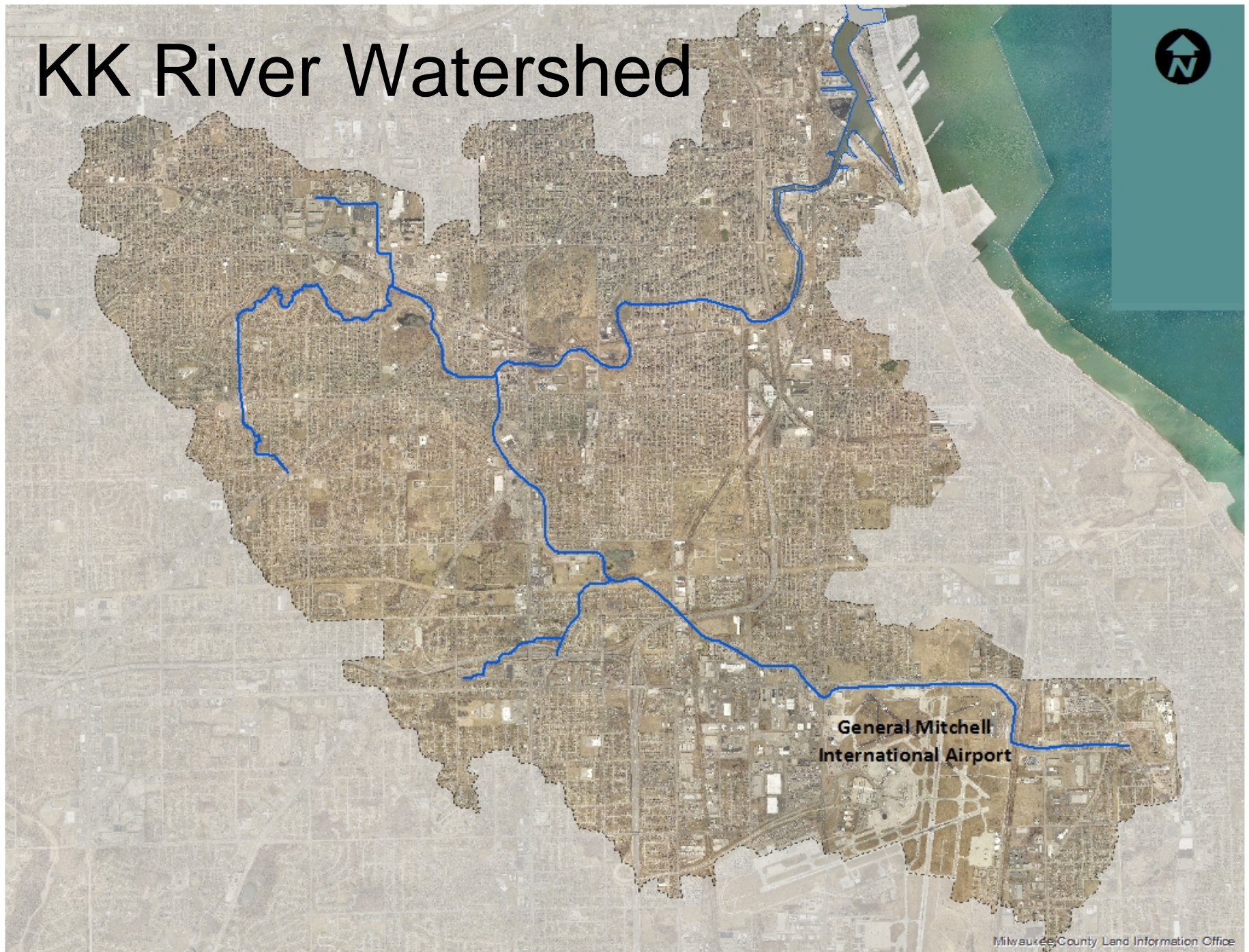
# **Intergovernmental Cooperation Agreement Between the Milwaukee Metropolitan Sewerage District and Milwaukee County for Kinnickinnic River Watercourse Restoration in Pulaski Park**

**Milwaukee County  
Parks, Energy & Environment Committee  
March 14, 2017**





# KK River Watershed



**General Mitchell  
International Airport**



# KK River Watershed



Pulaski  
Park



General Mitchell  
International Airport



# 1960's Concrete Channel Lining



# Public Safety





# Current Conditions





# Concrete Channel Removal





# Pulaski Park





# Pulaski Park

- KK River reconstruction
  - 1,900 lineal feet
  - Concrete removal/channel naturalization





# Pulaski Park

- KK River reconstruction
  - 1,900 lineal feet
  - Concrete removal/channel naturalization
- Impacted park assets:
  - Pedestrian bridge
  - Playground
  - Basketball courts
  - Trails/other natural areas





# Current KK River in Pulaski Park





# Proposed KK River



Draft Rendering



# Pulaski Park ICA

The District will:

- Design and construct KK River channel improvements within Pulaski Park
- Restore or replace impacted park amenities
- Obtain County approval of design prior to solicitation of bids
- Provide public outreach and opportunities for public input
- Perform long-term maintenance of the naturalized stream



# Pulaski Park ICA

The County will:

- Provide input throughout the project.
- Provide access to the park for the District and its contractors
- Provide any County required permits to the District at no cost.
- Grant a permanent flood easement to the District.
- Perform long-term maintenance of the park facilities and open space areas.