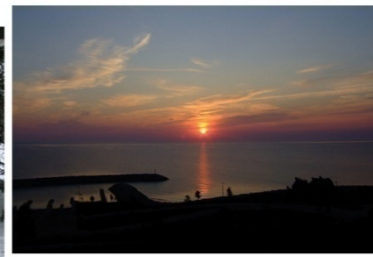
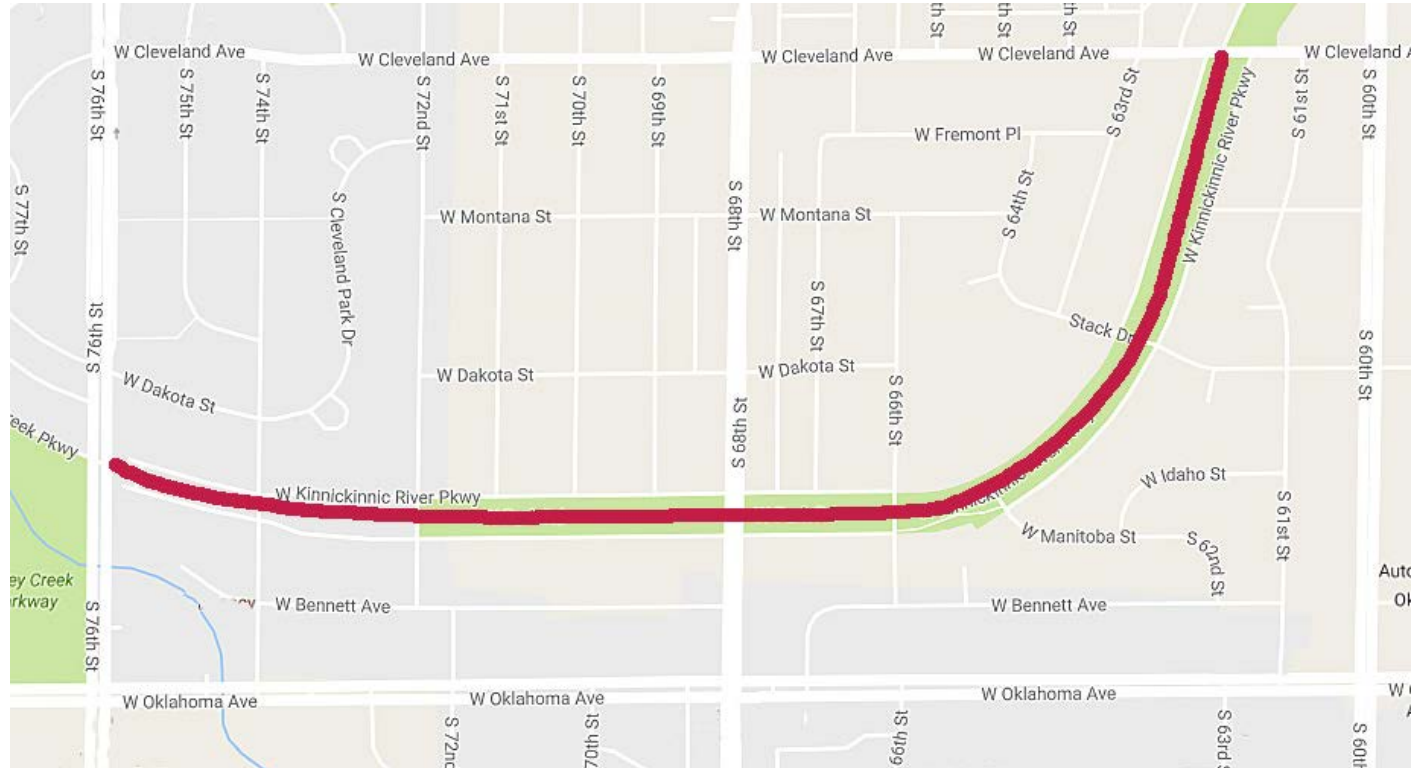


# *Kinnickinnic Parkway Reconstruction S 76<sup>th</sup> St to W Cleveland Ave*



## WP29001/02 Kinnickinnic Parkway Reconstruction

- 2016 - \$263,167 funded for design
- Public meeting scheduled for 10/27
- Considering alternative to reduce pavement footprint and increase green space
- 2017 - \$1,739,000 funding requested for construction





1951



1956

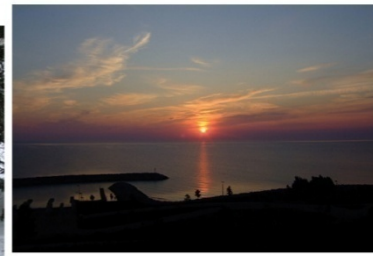




1961







### *Option 1 – Reconstruct Road in current footprint*

- *Total Project Cost Estimate = \$2,004,000*
- *Includes reconstruction of asphalt pavement, storm sewer, and roadway lighting systems*
- *Most of the concrete curb and gutter will be reused*
- *Asphalt pavement and base material will be removed or pulverized and reused*
- *Minimum 8-inch thick stone base and approximately 4-inch thick asphalt will be installed*
- *If budget allows, improvements to the school drop-off area such as a bus lane and sidewalk replacement will be incorporated*





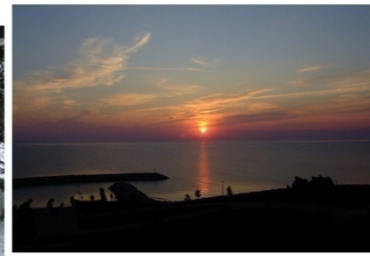
RECONSTRUCT PARKWAY ROAD  
TOTAL PROJECT COST = \$2,004,000.



MILWAUKEE COUNTY DEPARTMENT OF  
ADMINISTRATIVE SERVICES  
Architecture, Engineering &  
Environmental Services Section  
633 W. WISCONSIN AVE. SUITE 1000, MILWAUKEE, WI. 53203

PROJECT NO.	P290-16610	SHEET NO.	2	2 OF 2	FILE NO.	
PROJECT TITLE	KINNICKINNIC PARKWAY 76TH ST. TO 68TH ST.	SHEET DESCRIPTION	PARKWAY OPTION			
SHEET NO.	76TH ST. TO 68TH ST.	SHEET DESCRIPTION	PARKWAY OPTION			
DATE	9/22/16	DATE	9/22/16			
DESIGNED BY	DSG	CHECKED BY	KDS			
SCALE	1" = 180'	SCALE	1" = 180'			
DRAWN BY	DSG	DRAWN BY	DSG			





*Option 2 – Convert Road to 10-foot wide asphalt trail west of 68th*

- *Total Project Cost Estimate = \$1,828,000*
- *Same as Option 1 east of S 68<sup>th</sup> St*
- *Asphalt pavement, concrete curb and gutter, and base material will be removed*
- *10-foot wide paved multi-use trail, minimum 6-inch thick stone base and approximately 3-inch thick asphalt, will be installed*
- *Grading, storm sewer system, and turf installation will increase the green space*



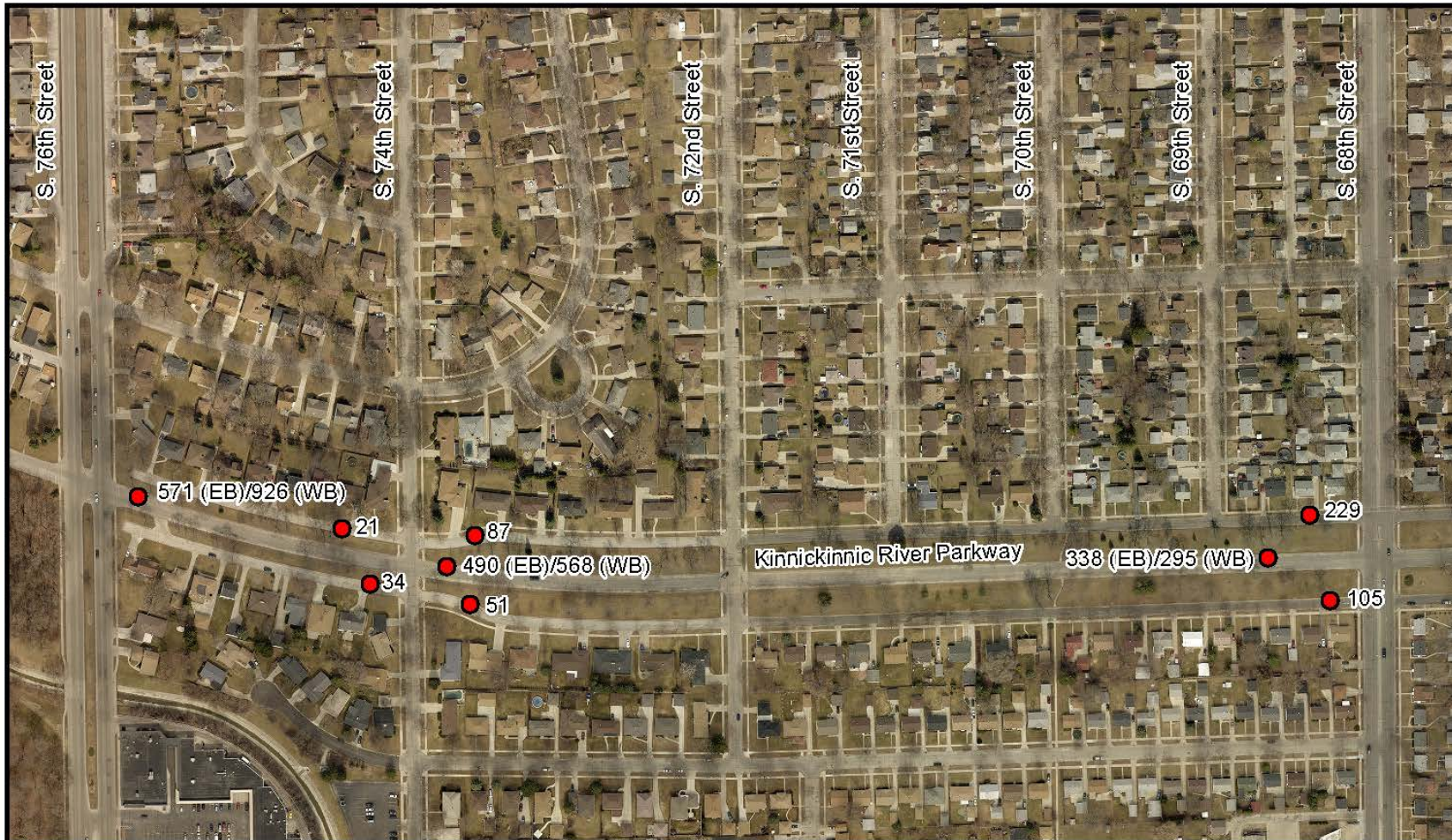
MILWAUKEE COUNTY  
**PARKS**





Google earth





**AVERAGE WEEKDAY TRAFFIC COUNTS ALONG THE KINNICKINNIC RIVER PARKWAY  
BETWEEN 76TH STREET AND 68TH STREET BASED ON VEHICLE COUNT DATA  
COLLECTED APRIL 18, 2016 THROUGH APRIL 22, 2016**

ROUTE: KINNICKINNIC RIVER PARKWAY  
LOCATION DESCRIPTION: 76TH STREET TO 68TH STREET  
COUNT DATE: APRIL 18, 2016 THROUGH APRIL 22, 2016  
SEWRPC PROJECT ID: 200-1000  
PREPARED BY: C. HIEBERT  
DATE: MAY 17, 2016



XXXX (XX)

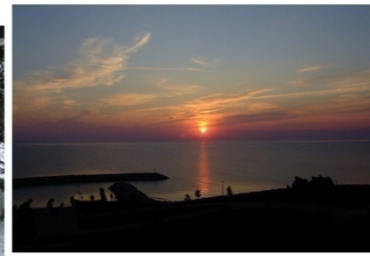
COUNT LOCATION  
2016 AVERAGE WEEKDAY TRAFFIC  
COUNT (DIRECTION)











## *Option 2 – Convert Road to 10-foot wide asphalt trail west of 68th*

- Consistent with Milwaukee County's Green Print Policy adopted by the Board of Supervisors in 2007*
- Reduce the footprint of impervious paved surface*
- Increase green space in the parkway*
- Reduce future capital and maintenance costs*
- Add the amenity of a paved multi-use trail*
- Improve the sustainability of the parkway assets*
- Better serve the community's recreational needs*











180 90 0 180 Feet

1966 Air Photo Showing Lake Park With Continuous Park Drive



**Legend**


 Milwaukee County Parks

180 90 0 180 Feet

2015 Air Photo Showing Lake Park Without Continuous Park Drive



**Legend**

 Milwaukee County Parks



# **Kinnickinnic Parkway Reconstruction**

**S. 76th Street to W. Cleveland Ave.**

## **Public Information Meeting**

**Thurs, Oct 27, 6:30-8:00 pm**  
**McCarty Park Pavilion**  
**78th St. & Beloit Rd.**



**[countyparks.com](http://countyparks.com)**