



Milwaukee Metropolitan Sewerage District's KINNICKINNIC RIVER WATERSHED PLAN UPDATE

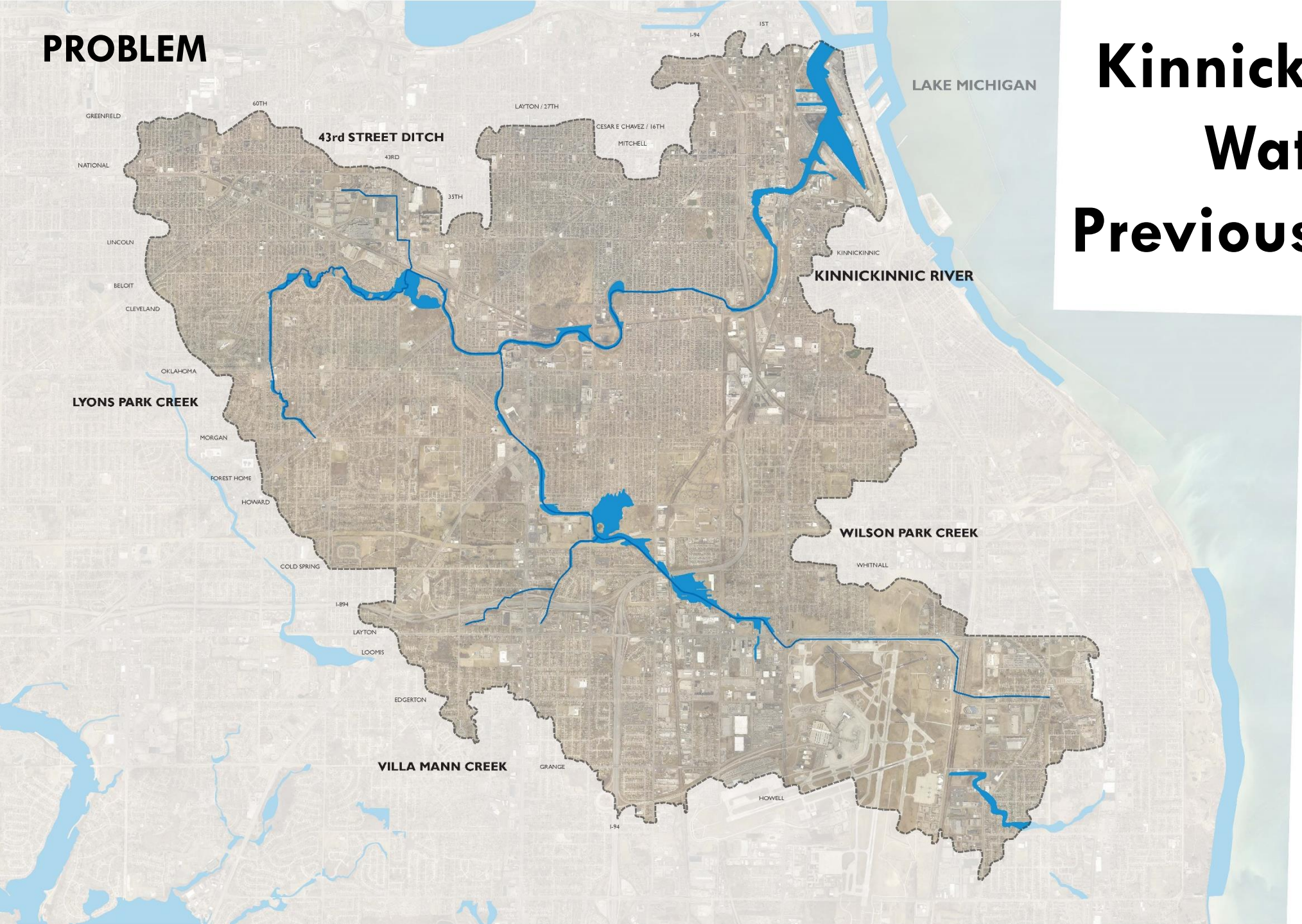
Flood Risk Reduction & Park Planning

**Milwaukee County
Parks, Energy & Environment Committee
September 13, 2016**



PROBLEM

**Kinnickinnic River
Watershed
Previous Flood Risk**

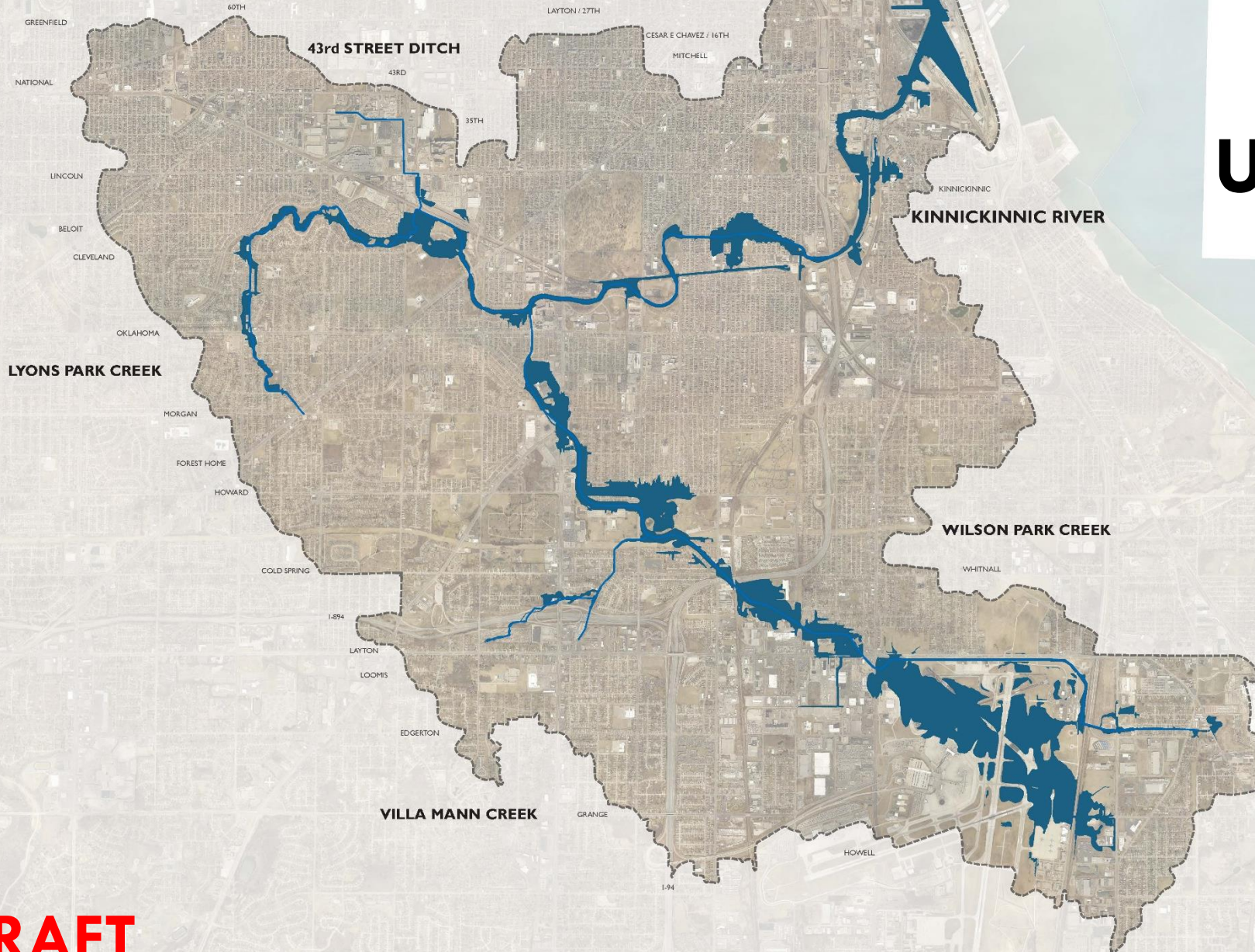


PROBLEM

Kinnickinnic River Watershed Updated Flood Risk

Over **600**
properties at
flood risk, at
great economic
and social cost to
the community.

DRAFT



PROBLEM

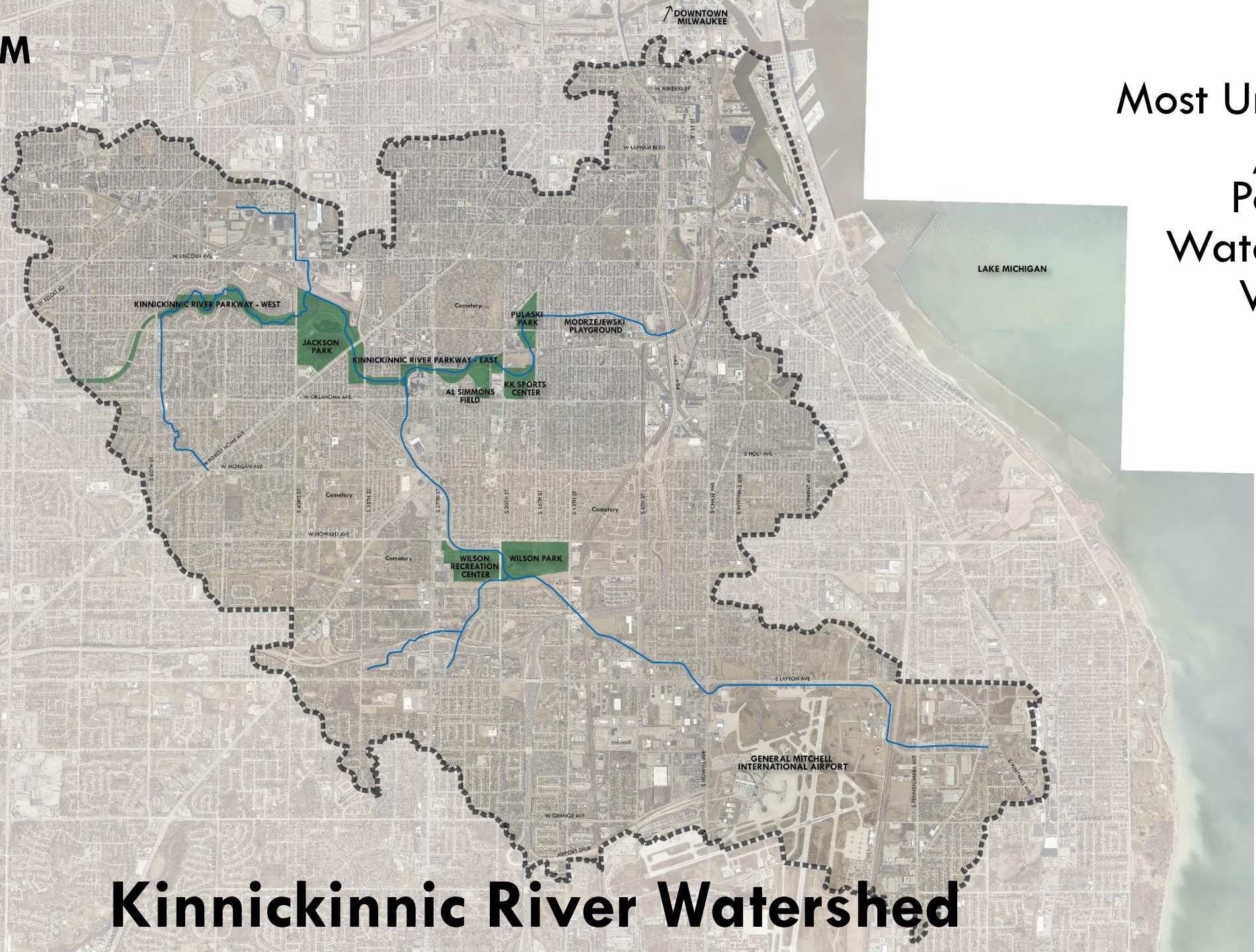


Kinnickinnic River Watershed Updated Flood Risk



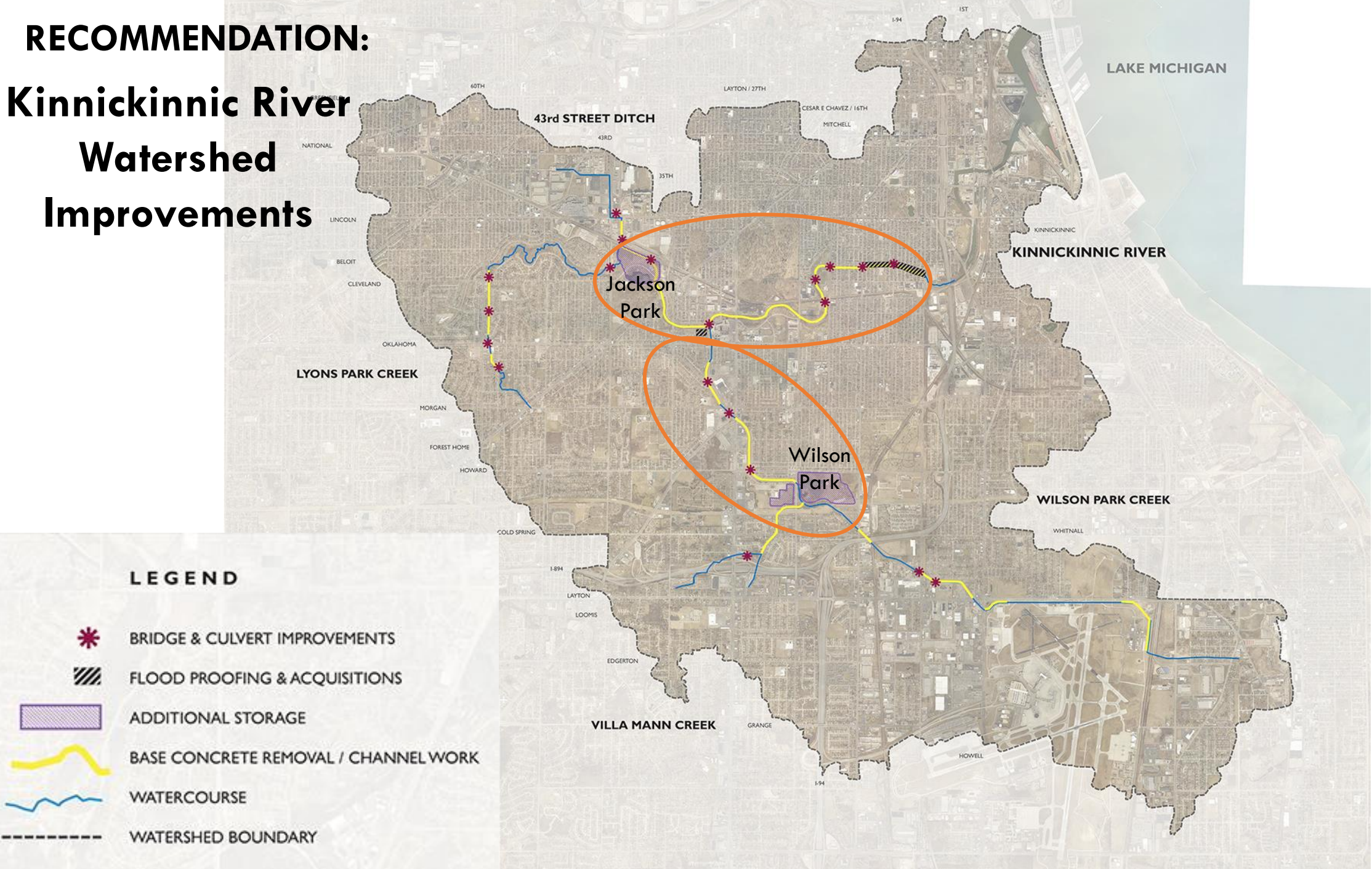
PROBLEM

Most Urbanized
/Densely
Populated
Watershed in
Wisconsin



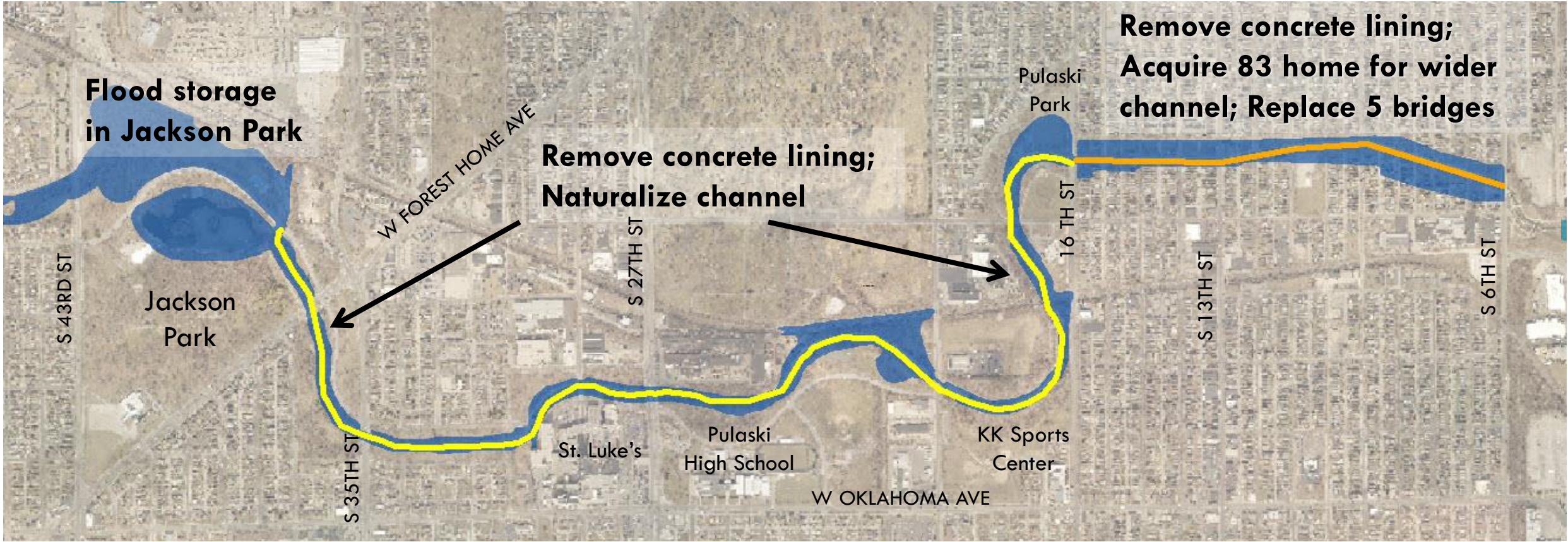
Kinnickinnic River Watershed

RECOMMENDATION: Kinnickinnic River Watershed Improvements



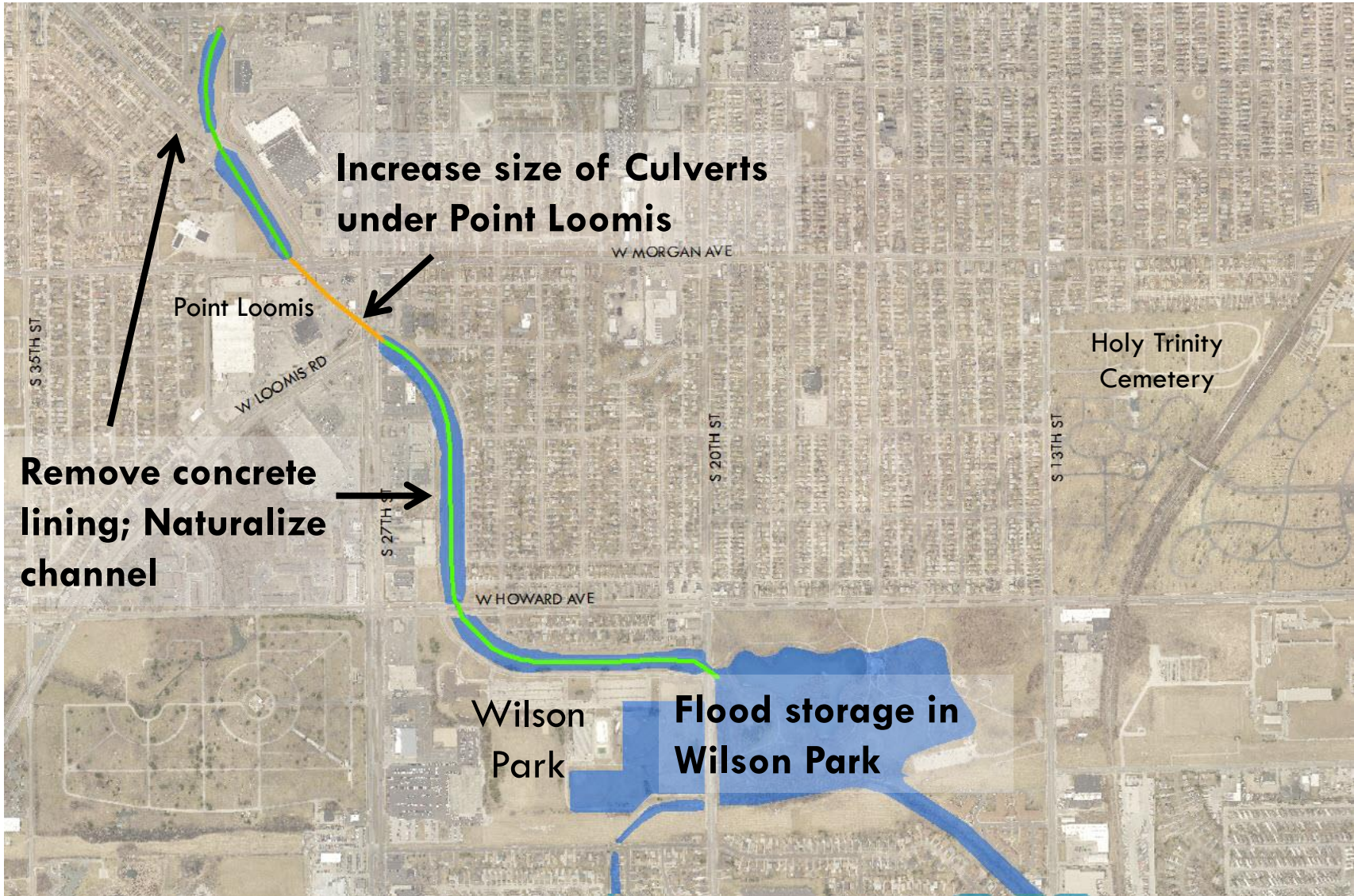
RECOMMENDATION

Why Jackson Park?



RECOMMENDATION

Why Wilson Park?



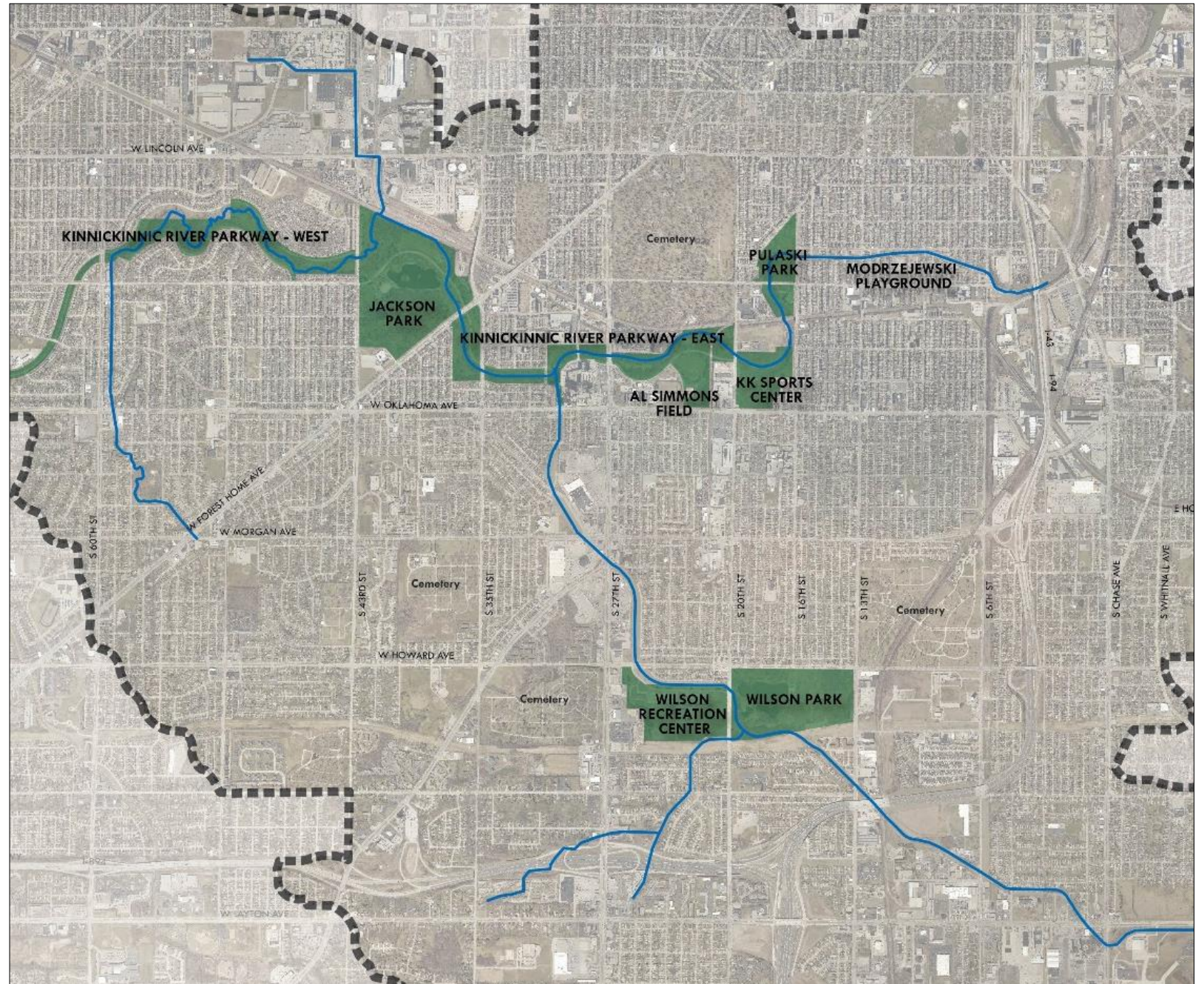
Park Planning

Combine Agency Efforts:

- Reduce flood risk
- Enhance area parks

Address Milwaukee County's Policy – Use of Park land by Other Government Units:

- Demonstrate public benefits
- Alternatives analysis
- Improve functionality of parks
- Harmonize aesthetics



PARK PLANNING

Community Outreach

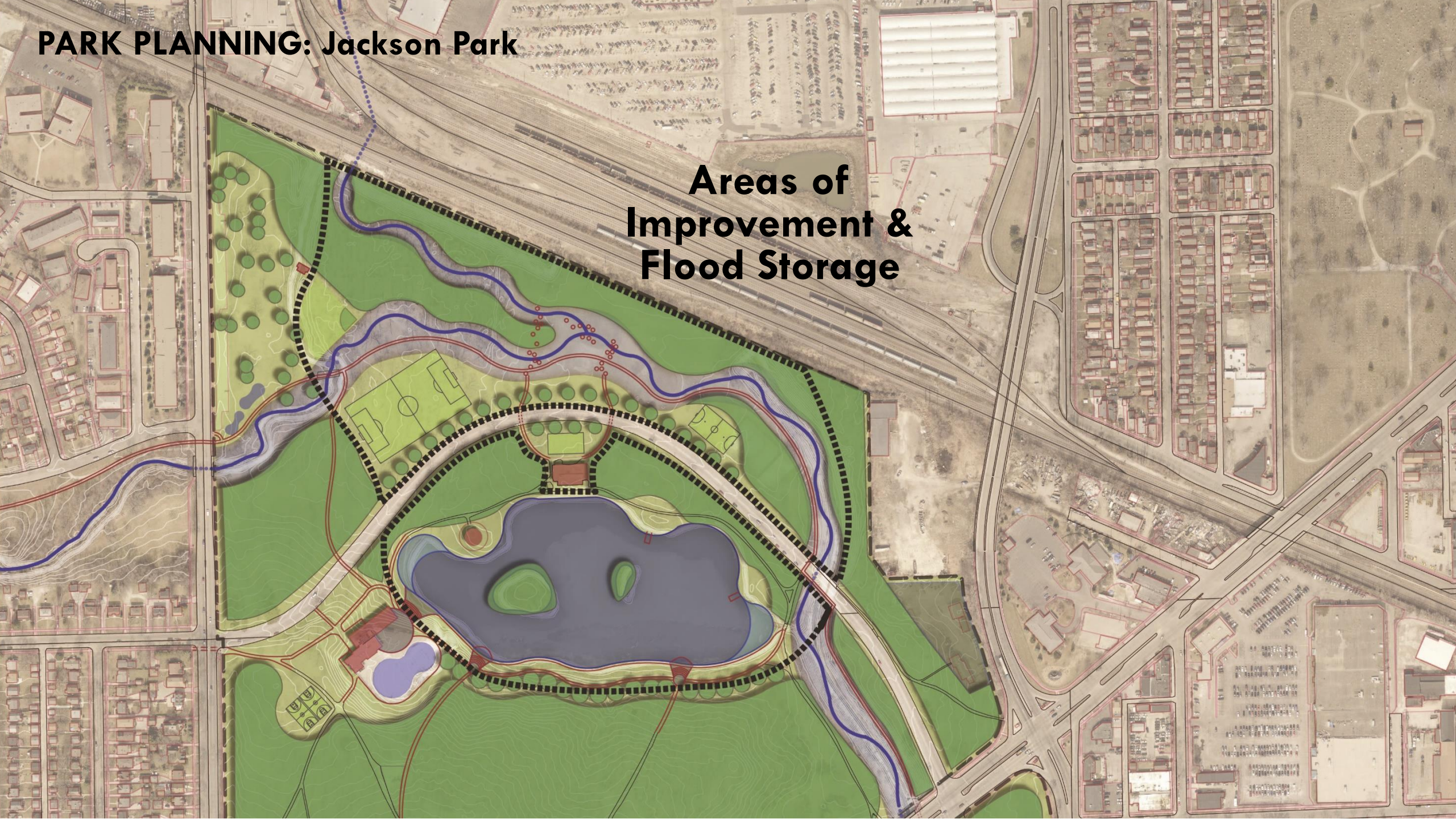


PARK PLANNING: Jackson Park



PARK PLANNING: Jackson Park

**Areas of
Improvement &
Flood Storage**



PARK PLANNING: Wilson Park



**Updated Flood Risk
Without Improvements**



**Park Plan With
Proposed Flood
Storage Area**

PARK PLANNING: Wilson Park

**Areas of
Improvement &
Flood Storage**



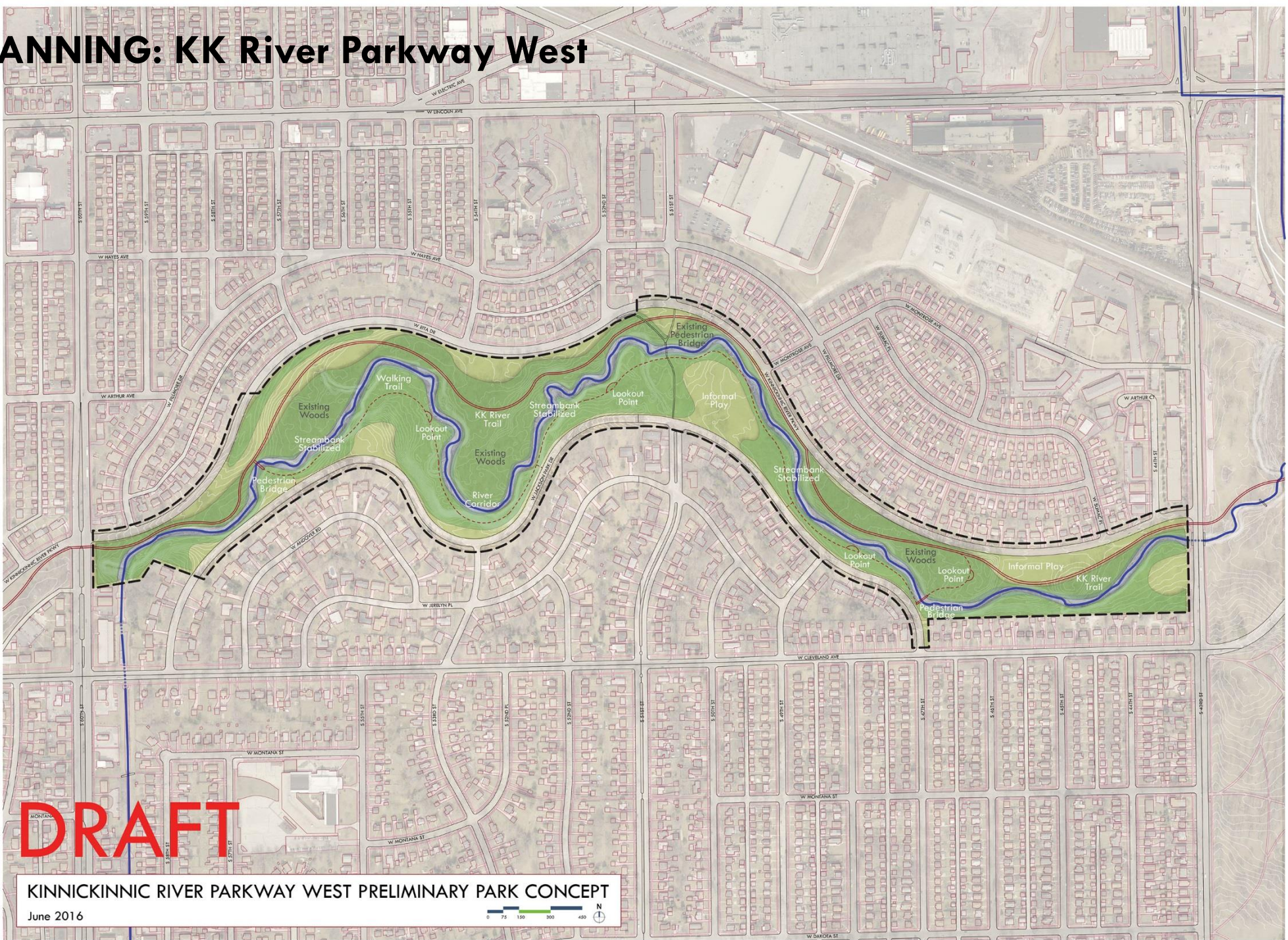
PARK PLANNING: Pulaski Park



PARK PLANNING: KK River Parkway East (includes KK Sports Center & Al Simmons Field)



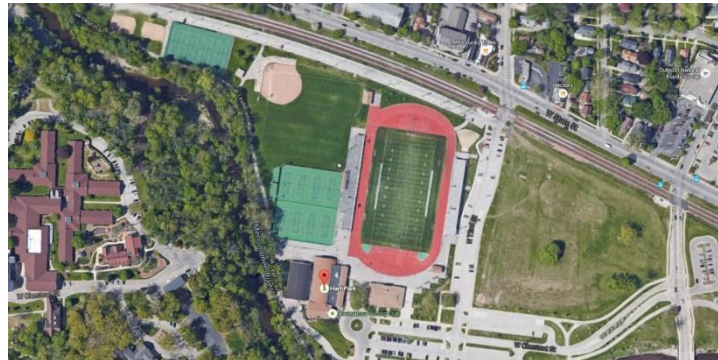
PARK PLANNING: KK River Parkway West



LOCAL EXAMPLE

Hart Park

Wauwatosa, WI



A **floodable** playground, pavilion, concert area, skate park, and athletic fields helps to store floodwater from the Menomonee River

NEXT STEPS

Public Information Meetings

Reach 2 (S. 6th – S. 27th Street)

October 6th, 6-8pm at Lincoln Avenue

Watercourse

October 11th, 6-8pm at Manitoba Elementary

October 13th, 6-8pm at Wilson Park Senior Center

Contact Information

Patrick Elliott – MMSD Senior Project Manager

p: (414) 225-2168

e: PElliott@mmsd.com