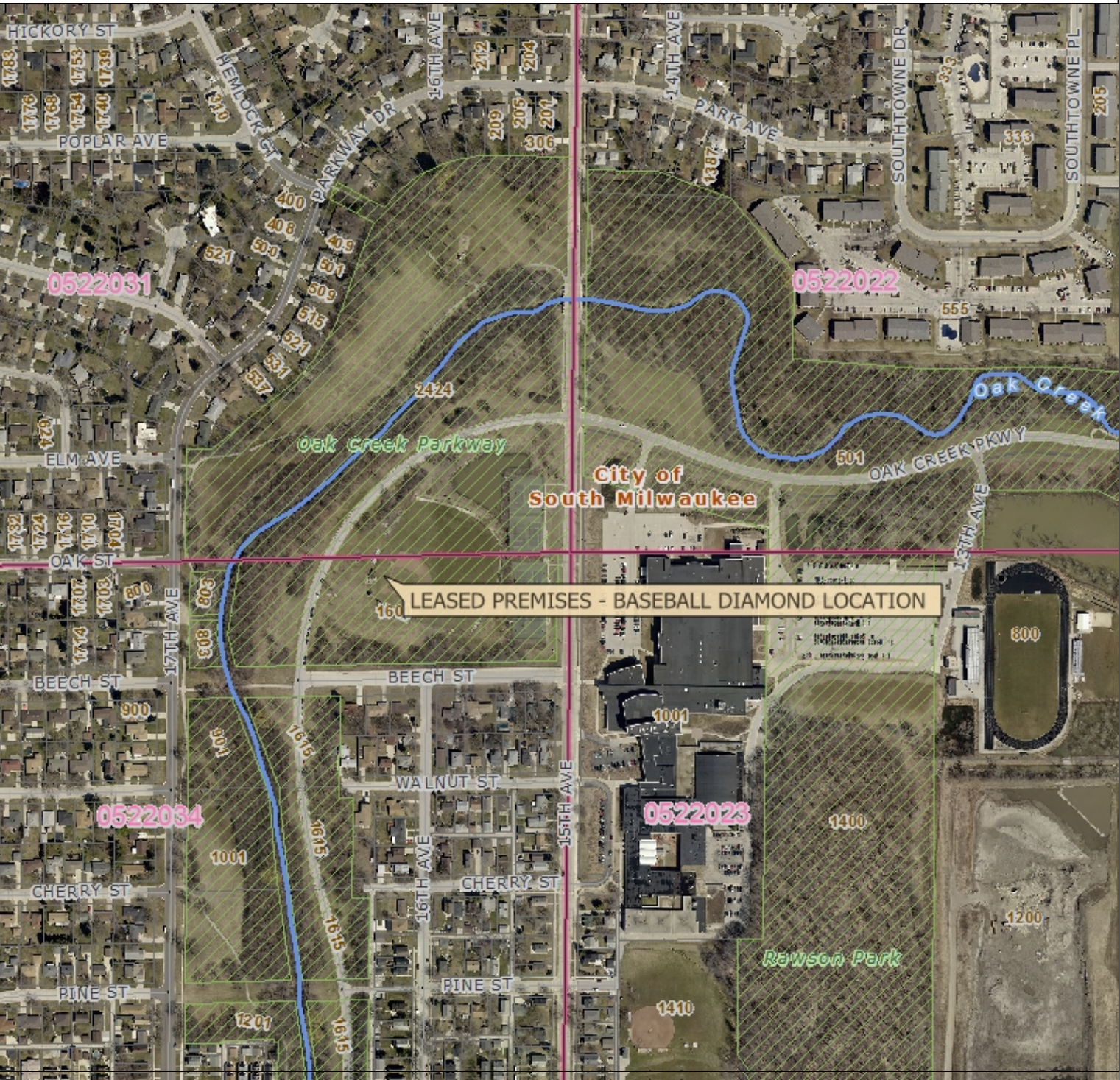




# ATTACHMENT 2 - BASEBALL DIAMOND LOCATION

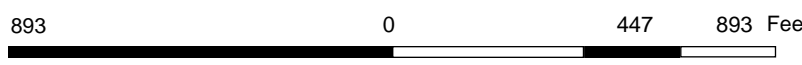


**Notes**

SOUTH MILWAUKEE SCHOOL DISTRICT

THIS MAP IS NOT TO BE USED FOR NAVIGATION © MCAMLIS

**DISCLAIMER:** This map is a user generated static output from the Milwaukee County Land Information Office Interactive Mapping Service website. The contents herein are for reference purposes only and may or may not be accurate, current or otherwise reliable. No liability is assumed for the data delineated herein either expressed or implied by Milwaukee County or its employees.



Legend	1: 5,359
	County Boundary
	PLSS Grid
	Intersection Points
	Highways, to 8k
	Street Centerlines, 0k to 8k
	Railroad 8k
	Water 8k
	Rivers 8k
	Landmarks 8k
	County Parks 8k