



County of Milwaukee  
**Office of the Sheriff**

---

David A. Clarke, Jr.  
*Sheriff*

**DATE:** October 24, 2013

**TO:** Supervisor Theodore Lipscomb, Sr., 1<sup>st</sup> District  
Chairman, Judiciary, Safety and General Services

**FROM:** Edward H. Bailey, Inspector, Milwaukee County Office of the Sheriff

**SUBJECT:** **13-784 From the Office of the Sheriff, providing an update on Airport Patrol and Park Patrol / Targeted Enforcement Unit activities, including adherence to the 2013 Park Plan (INFORMATIONAL ONLY)**

**BACKGROUND:** The MCSO Airport Division provides both security assistance and is the primary law enforcement agency at General Mitchell International Airport. It has, in recent years, accomplishes this duty with an assigned force of 50 Deputy Sheriff 1 positions plus a 4-member K9 complement. The 2013 Adopted Budget funds 54 Deputy Sheriff positions, 6 Deputy Sheriff Sergeants, 1 Deputy Sheriff Lieutenant, 1 Deputy Captain and 1 Clerical Assistant. Total 2013 charges to the Airport Division are set at \$8,001,280; There is no property tax levy budgeted in the Airport Security program area as the operating cost of this program, less citation and grant revenue, is charged to the Airport. The Airport is currently staffed at a complement of 52 Deputy Sheriffs; 1 sergeant's position is currently unfilled.

**STATUS:** Airport / 2013 YTD

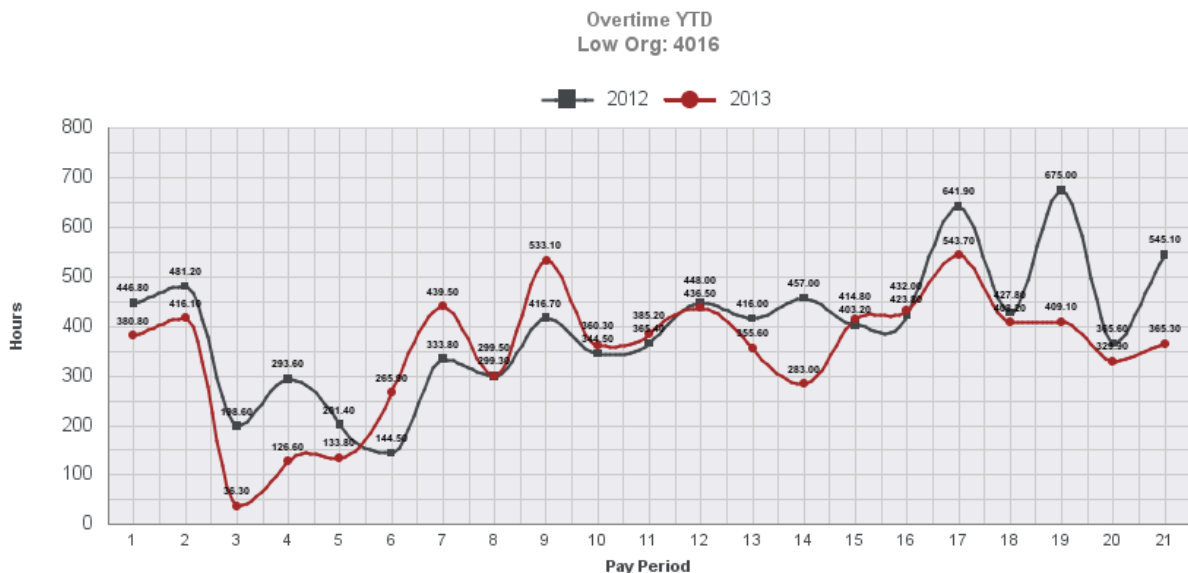
- As we reported previously, during the first quarter of 2013, the MCSO reported 5 auto break-ins in remote lot B. This investigation encompassed criminal investigation; Video review and improvement recommendation to GMIA; additional staffing; and education in the form of flyer and signage in the shuttle buses and shelters, stairwells, on the ticketing issuing machines which are located at the entrances to all parking lots and various areas throughout the parking structure. In the second quarter, these activities resulted in only more event of this type, when an additional 4 autos were damaged bringing the "running total" to 9. We are pleased to report that in the 3<sup>rd</sup> quarter, we experienced no addition vehicle break-ins.

	9/15/2013 TO 10/12/2013	8/18/2013 TO 9/14/2013	% Change	8/18/2013 TO 9/14/2013	7/21/2013 TO 8/17/2013	% Change	YTD 2013	YTD 2012	% Change	YTD 2013	YTD 2011
<b>Incidents</b>											
<a href="#">Part I Crimes</a>	3	4	-25%	4	5	-20%	36	37	-3%	36	0
<a href="#">OVI/Liquor Law Violations</a>	3	6	-50%	6	9	-33%	61	55	11%	61	1
<a href="#">Weapon Violations</a>	0	3	-300%	3	1	200%	15	27	-44%	15	0
<a href="#">Narcotic Violations</a>	2	0	200%	0	3	-300%	22	37	-41%	22	2
<a href="#">All Other Offenses</a>	50	50	0%	50	62	-19%	658	1007	-35%	658	24
*TOTAL Incidents	58	63	-8%	63	80	-21%	792	1163	-32%	792	27
<b>Arrests</b>											
<a href="#">Summary Arrests</a>	5	4	25%	4	10	-60%	91	115	-21%	91	1
<a href="#">Warrant Arrests</a>	1	3	-67%	3	3	0%	23	39	-41%	23	0
<a href="#">Summoned/Cited And Released</a>	1	4	-75%	4	4	0%	31	46	-33%	31	0
<a href="#">Attempt to Arrest/Contact</a>	0	0	0%	0	0	0%	0	2	-200%	0	0
*TOTAL Arrests	7	11	-36%	11	17	-35%	145	202	-28%	145	1

Milwaukee County Sheriff's Office - Airport Division	
Crime Class Description BY CFS Code Description	
CFS Code Description ▼	Crime Class Description ▼
Intimidation (inc Stalking)	1
Motor Vehicle Theft/Stolen Veh	9
Possess Stolen Vehicle	1
Resisting Officer	1
Retail Theft	1
Simple Assault	5
Theft-All Others	13
Theft-From Auto	5

Milwaukee County Sheriff's Office - Airport Division	
CFS Code Description BY CFS Code Description	
CFS Code Description ▼	CFS Code Description ▼
Carry Concealed Weapon	10
Carrying Prohib Weapon	2
Weapon Offense	3

Charge Description	Charge Description
Operating While Intoxicated	39
Operating with PAC Of .10 Or More (1st)	22
Deviation from Designated Lane	14
Operating while Intoxicated (2nd)	11
Fail/Obey Traffic Officer Sign/Signal	10
Operating After Suspension	10
Operating with PAC Of .08 Or More (2nd)	10
Possession Of Marijuana	9
Unsafe Lane Deviation	9
Operating with PAC >=.08 < .10 (1st)	6
Warrant	6
Failure To Keep Vehicle Under Control	5
Keep Open Intoxicants In MV-Driver	4
OAR (1st - Rev Due To OWIPAC)	4
Operating While Intoxicated (3rd)	4
Theft	3
Warrant-Other Department Pickup	3
2nd-Degree Recklessly Endangering Safety	2
Battery	2



**Labor Costs = 64% of 2013 Budget as of 10/10/2013**

ACCOUNT NBR	ACCOUNT NAME	2013 BUDGET AMOUNT	2013 ACTUAL AMOUNT	2012 ACTUAL AMOUNT
5001	DIRECT LABOR CHARGED		2,008,219	2,571,043
5002	OFFTIME CHARGED		388,390	497,240
5003	FRINGE BENEFITS CHARGED		2,218,211	2,846,090
5051	DIRECT LABOR APPLIED		(2,387,211)	(2,855,031)
5052	OFFTIME APPLIED		(461,687)	(552,163)
5053	FRINGE BENEFITS APPLIED		(2,650,288)	(3,172,939)
5189	DIRECT LABOR TRN OUT		0	0
5190	DIRECT LABOR TRANSFER IN		(758)	(16,938)
5199	SALARIES-WAGES BUDGET	3,715,115	2,658,375	3,196,861
5201	OVERTIME	382,272	530,854	566,519
5248	SICK PAY BALANCE PAYOUT		1,819	
5312	SOCIAL SECURITY TAXES	314,166	230,893	279,799
5318	UNEMPLOYMENT COMPENSATION	0	0	13,068
5321	UNIFORM ALLOWANCE	24,225	0	(1,615)
5322	EDUCATIONAL BONUS	15,650	0	16,975
5325	LONGEVITY PAY	8,020	8,901	15,528
5390	FRINGE BENEFIT TRANSFER-DIRECT	0	128	(5,840)
5402	FRINGE BENEFIT-PENSION ADJUST	33,182	0	25,844
5420	EMPLOYEE HEALTH CARE	822,846	596,091	671,413
5421	EMPLOYEE PENSION	597,407	451,144	430,670
5422	LEGACY HEALTHCARE	820,698	625,360	816,433
5423	LEGACY PENSION	426,347	387,500	469,021
5490	FRINGE BENEFIT TRFR-IND IN		(649)	53,649
5495	PERS SERV INDIRECT ABATEMENT'	0	(18)	(6)
	PERSONAL SERVICES	7,159,928	4,605,275	5,865,621

**4018 - K-9 PATROL - 2013-2011**

ACCOUNT NBR	ACCOUNT NAME	2013 BUDGET AMOUNT	2013 ACTUAL AMOUNT	2012 ACTUAL AMOUNT
	PERSONAL SERVICES	494,583	427,453	528,262

**SUBJECT: From the Office of the Sheriff, providing a midyear report detailing Park Patrol / Targeted Enforcement Unit activities, including adherence to the 2013 Park Plan (INFORMATIONAL ONLY)**

**BACKGROUND:** In 2004, with the transfer of 16 Deputy Sheriff and 1 Deputy Sheriff Sergeant from various units within the Sheriff's Office and the creation of the Gun Reduction Interdiction Program (GRIP), our Police Service Bureau's efforts included focus on urban crime. Beginning in 2007, when GRIP broadened to become the MCSO Targeted Enforcement Unit (TEU), that focus once again came to include traditional MCSO jurisdictions of Parks and on the MCSO Transit system, and staffing increased to include 2 Deputy Sheriff Sergeants and 25 Deputy Sheriffs. It is the Sheriff's position that the 2012 Adopted Budget and timeframe left him without the ability to deploy in both the Parks and the Transit system in an adequate manner. During the budget Process of October 2012, the Office of the Sheriff revealed a 2013 Parks Patrolling plan that envisioned a full return to the deployment patterns and zoned, high-visibility patrols that had previously existed in MCSO Parks policing. During that process, the County Board requested that the Sheriff submit periodic reports and updates detailing Park / TEU activities.

**STATUS:** Milwaukee County Parks / 2013 YTD

- YTD 4,365 straight time hours have been have been spent in dedicated Parks operations (Unassigned Patrolling and Calls for Service) as compared to 4,151 hours in YTD 2012.

High Visibility Patrols												
First Shift	0	0	0%	0	2	-200%	2778	179	1,452%	2778	389	614%
Second Shift	0	0	0%	0	11	-1,100%	3512	298	1,079%	3512	526	568%
Third Shift	0	0	0%	0	11	-1,100%	1772	197	799%	1772	280	533%
TOTAL High Visibility Patrols	0	0	0%	0	24	-2,400%	8062	674	1,096%	8062	1195	575%

- Using the new ARMED tracing system, the MCSO Law Enforcement Analytics Division is continuing to track TEU appearances at Neighborhood / Parks meetings as a valuable metric. YTD we have addressed groups at 32 different locations including multiple events at Saveland, Dretzka, Dineen, Humboldt, Whitnall, Washington and Grant Parks.

Category	2013 YTD	2012 YTD	% Change (-)
All Part I Crimes	118	24	392

CFS Code Description	CFS Code Description
Theft-From Auto	49
Theft-All Others	16
Assault	10
Theft-From Building	08
Motor Vehicle Theft/Stolen Veh	07
Burglary-Forced Entry-Nonres	05
Robbery-Street-Strongarm	05
Simple Assault	04
Robbery-Street-Gun	03
Possess Stolen Vehicle	02
Theft-Parts From Vehicle	02

(In Part I, the Uniform Crime Reporting System (UCR) indexes reported incidents in two categories: violent and property crimes. Aggravated assault, forcible rape, murder, and robbery are classified as violent while arson, burglary, larceny-theft, and motor vehicle theft are classified as property crimes)

Category	2013 YTD	2012 YTD	% Change (-)
Death (Noyes, 05/2013)(Washington 07/2013)	2	5	(80)
Mutual Aid / Backup	75	90	(17)
Burglary	3	4	(25)
CDTP**	72	46	57
Parking Complaints	52	68	(24)
Robbery (Lincoln, King, Johnson's, Cooper, Alcott)	5	2	150
Vehicle stops	1698	1802	(6)
Weapons Violations	17	8	113
CCW	18	2	800
Narcotics (Marijuana 24, Pharma 15, Cocaine 5, Heroin 1)	44	10	340
OWI (In/Adjacent to Parks)	87	8	988

\*\*GRANT SEVEN BRIDGES 3 / JACKSON PARK 3 / KOSCIUSZKO BLDG 3  
MITCHELL PARK 3 / BRADFORD BEACH 2 / DOCTORS PARK 2  
KOSCIUSZKO PARK 2 / BRADFORD BEACH/NORTHPOINT 1  
BRADFORD BEACH/TIKI HUT 1

- The clearance of calls for service through arrest are as noted:

<b>Category</b>	<b>2013 YTD</b>	<b>2012 YTD</b>	<b>% Change (-)</b>
Summary Arrests	197	56	252
Warrant Arrests	43	28	54

**Summary Arrests Including:**

Disorderly Conduct	15
Battery	11
Recklessly Endangering Safety	8
Felon in Possession of Firearm	6
Carrying Concealed Weapon	4
Fleeing	3
Entry Into Locked Vehicle	4
Theft	5

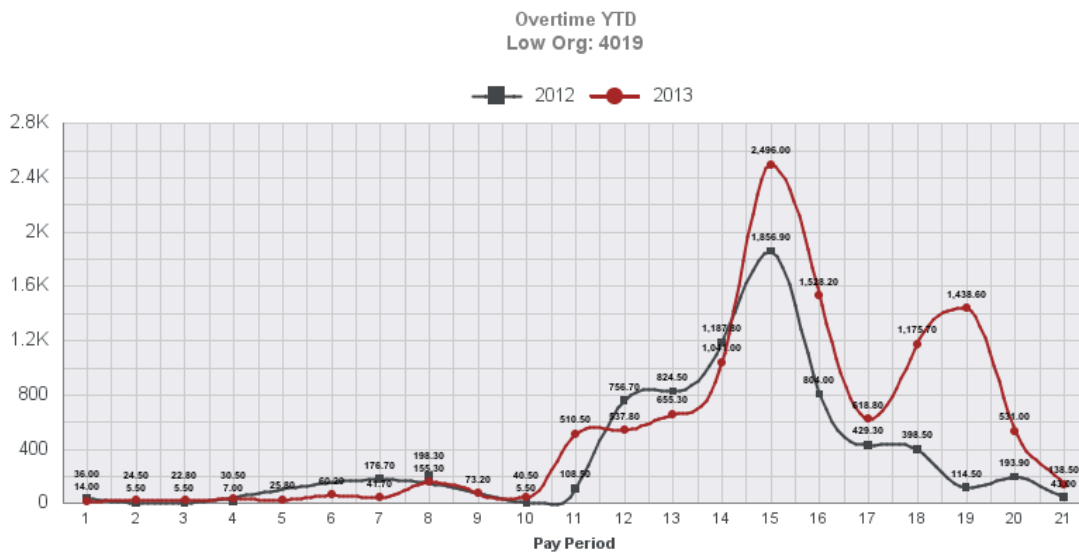
- Generally, citation activity (in and of itself) is not a good indicator of crime or disorder. However, it is a strong indicator of officer generated activity and indicative of successful patrolling efforts and engagement in policing activities:

<b>Category</b>	<b>2013 YTD</b>	<b>2012 YTD</b>	<b>% Change (-)</b>
Uniform Traffic	3562	826	331
County Ordinance	174	116	50
Parking	281	277	24
Juvenile Alcohol	49	30	63
<b>Total</b>	<b>4066</b>	<b>1199</b>	<b>239</b>

**Parks Incidents of Note:**

- On July 19, an Armed Robbery incident in McGovern Park was investigated and cleared by arrest. In short, a Female was lured to the park by a pair of Female, and met at park by 3 additional Males known to them. The main victim had met a suspect a month prior. She had been invited to a “cookout” at the park, and to drink beer and smoke marijuana. When she attempted to leave the park she was attacked by a suspect; robbed, and pistol whipped, during which the gun discharged; she surrendered her purse and the group fled. A .40 caliber casing was recovered from the scene. Through investigations detectives were able to identify the suspects involved in this incident and they were arrested at an address in the 5000 block of N. 37th Street with pistol and proceeds of robbery. Suspect’s criminal Hx included Burglary, OVWOOC, Poss of Short Barreled Shotgun, Poss of Marijuana, Armed Robbery. Charges currently pending as to five subjects for Armed Robbery with Threat of Force X2 and Possession of Firearm by Felon. Currently scheduled for Plea/sentencing hearing scheduled on October 22, 2013 in Branch 24.

- On July 14, TEU responded to the City of Milwaukee Police Department, District 4, regarding a sexual assault that reportedly occurred in the unisex bathroom of the Parks Department Building, located in the south parking lot of Lincoln Park. The victim, a Milwaukee County employee, was working at Lincoln Park when a coworker assaulted the victim in a bathroom of the Park Building. This case, issued as a 2nd degree Sexual Assault, is pending before Judge Stephanie Rothstein.
- On August 25, TEU responded to a carjacking Jackson Park. A 49-year-old Female victim was seated in her vehicle when 3 juvenile male subjects approached, began beating her and eventually stole her vehicle. The males also stole her purse but it was recovered it in the grass with her Credit Card was missing. TEU set up a perimeter inside the park, with MPD assisting with a squad a few blocks outside of the park. Vehicle located in the 3800 block of W. Forest Home Avenue. LE located 2 suspects hiding in the wood line at 4200 W. Lincoln Avenue. Victim's keys on one suspect. Both arrested for Substantial Battery, Operate Vehicle W/O Owners Consent and Robbery With Use Of Force.
- On September 3, TEU Deputy Cory Clark was patrolling in Lake Park and entered the parking lot of the Lake Park Bistro Restaurant. As the squad turned into the second row of the lot, a young males jumped into a parked car and slid down into the seat as if to hide. 2 males were removed from the vehicle and detained. Subsequent investigation revealed that a nearby SUV had the front passenger side window broken with shattered glass on the ground and on the seat. Additionally, a second car, was located with its rear passenger side window broken and shattered glass on the ground and on the seat. A stolen backpack was found in the grass nearby, and one of the suspects poses a flathead screwdriver whose blade matched the damage to both vehicles and is believed to be the instrument that was used to break the windows. Both subject charged with criminal damage to property; entry into a locked vehicle, and theft. This case is currently pending before Judge Seifert.





**Labor Costs = 84% of 2013 Budget as of 09/28/2013**

ACCOUNT NAME	2013 BUDGET AMOUNT	2013 ACTUAL AMOUNT	2012 ACTUAL AMOUNT	2011 ACTUAL AMOUNT
DIRECT LABOR CHARGED		\$ 1,493,631	\$ 684,374	\$ 1,390,282
OFFTIME CHARGE		\$ 288,868	\$ 132,323	\$ 268,881
FRINGE BENEFITS CHARGED		\$ 1,654,601	\$ 779,169	\$ 1,545,555
DIRECT LABOR APPLIED		\$ (1,512,579)	\$ (714,251)	\$ (1,405,423)
OFFTIME APPLIED		\$ (292,533)	\$ (138,136)	\$ (271,809)
FRINGE BENEFITS APPLIED		\$ (1,673,971)	\$ (790,462)	\$ (1,555,382)
DIRECT LABOR TRANSFER OUT		\$ 21,107	\$ -	\$ -
DIRECT LABOR TRANSFER IN		\$ (24,300)	\$ 47,477	\$ -
SALARIES-WAGES BUDGET	\$ 1,751,152	\$ 1,548,085	\$ 791,013	\$ 1,465,984
OVERTIME'SOCIAL SECURITY TAXES	\$ 292,128	\$ 318,510	\$ 151,042	\$ 203,628
UNEMPLOYMENT COMPENSATION	\$ 154,706	\$ 139,657	\$ 70,483	\$ 126,798
UNIFORM ALLOWANCE		\$ -	\$ 10,527	\$ 2,822
UNIFORM ALLOWANCE	\$ 11,475	\$ -	\$ (773)	\$ 7,667
EDUCATION BONUS	\$ 3,600	\$ -	\$ 1,825	\$ 3,000
LONGEVITY PAY	\$ 6,396	\$ 4,866	\$ 6,594	\$ 7,080
FRINGE BENEFIT TRANSFER-DIRECT		\$ 1,664	\$ 3,632	\$ -
FRINGE BENEFIT TRANSFER-PENSION ADJUST	\$ 13,414	\$ -	\$ 12,090	\$ 16,776
EMPLOYEE HEALTH CARE	\$ 427,043	\$ 339,354	\$ 161,799	\$ 382,001
EMPLOYEE PENSION	\$ 267,211	\$ 262,590	\$ 102,387	\$ 291,224
LEGACY HEALTHCARE	\$ 354,895	\$ 283,941	\$ 341,988	\$ 312,035
LEGACY PENSION	\$ 182,302	\$ 173,985	\$ 198,035	\$ 159,092
FRINGE BENEFIT TRFR-IND IN		\$ 17,882	\$ 40,288	
PERS SERV INDIRECT ABATEMENT		\$ -		\$ (21)
PERSONAL SERVICES	\$ 3,464,322	\$ 3,045,358	\$ 1,891,424	\$ 2,950,190

**S:// Edward H. Bailey, I7**

Edward H. Bailey, Inspector, Milwaukee County Office of the Sheriff