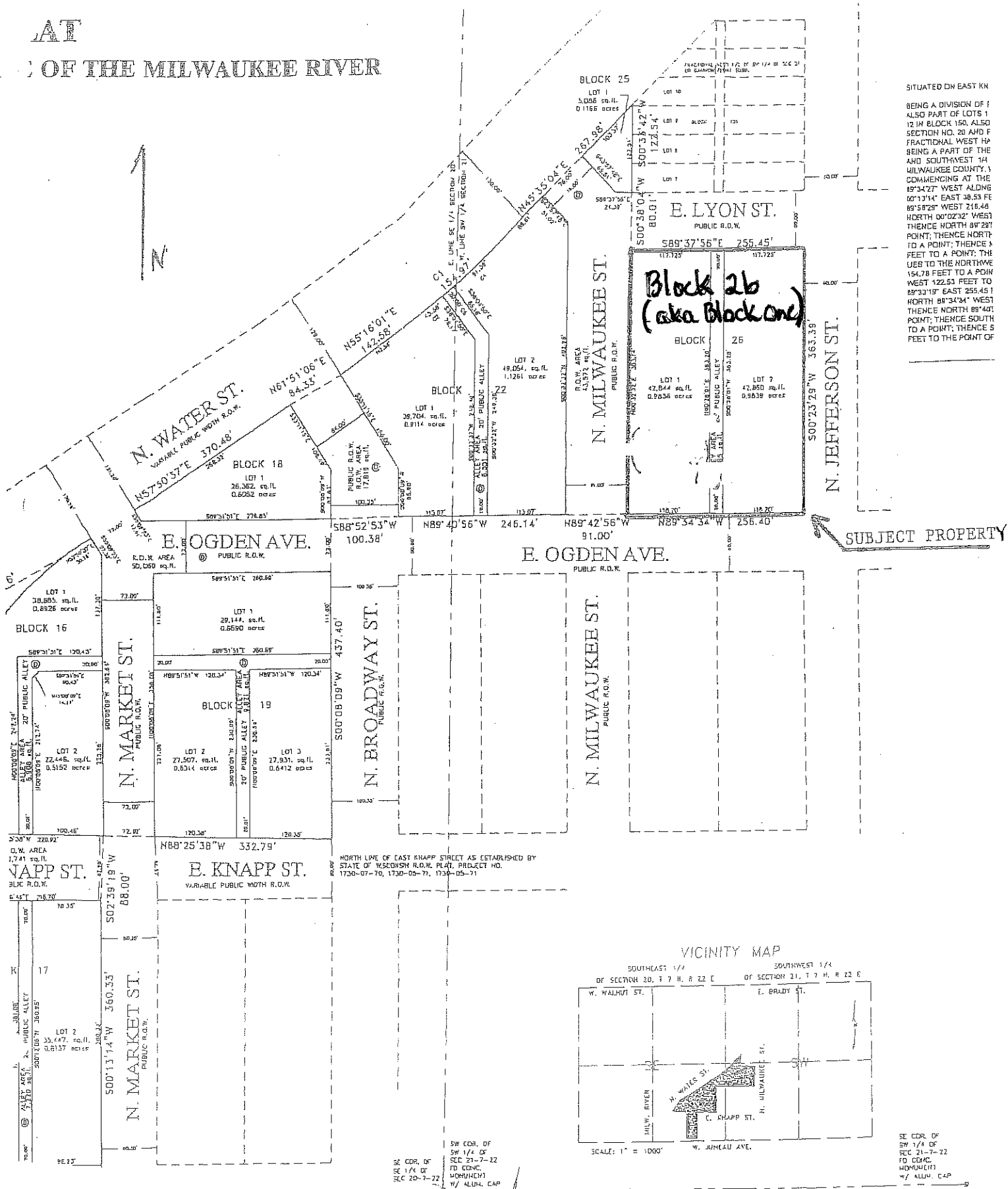


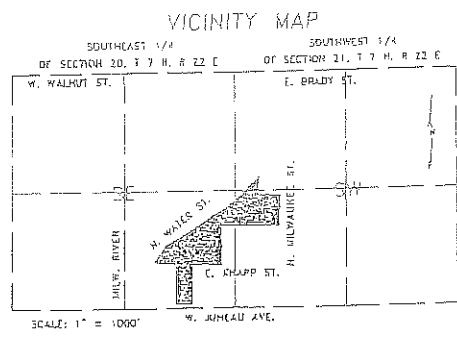
AT

OF THE MILWAUKEE RIVER



SITUATED ON EAST KN
 BEING A DIVISION OF I
 ALSO PART OF LOTS 1
 12 IN BLOCK 150, ALSO
 SECTION NO. 20 AND F
 FRACTIONAL WEST HA
 BEING A PART OF THE
 AND SOUTHWEST 1/4
 MILWAUKEE COUNTY, A
 COMMENCING AT THE
 89°34'27" WEST 216.48
 NORTH 00°02'32" WEST
 THENCE NORTH 89°28'
 TO A POINT; THENCE NORT
 FEET TO A POINT; THE
 JES TO THE NORTHWE
 154.78 FEET TO A POIN
 WEST 122.53 FEET TO
 NORTH 89°34'34" WEST
 THENCE NORTH 89°40'
 TO A POINT; THENCE S
 FEET TO THE POINT OF

SUBJECT PROPERTY



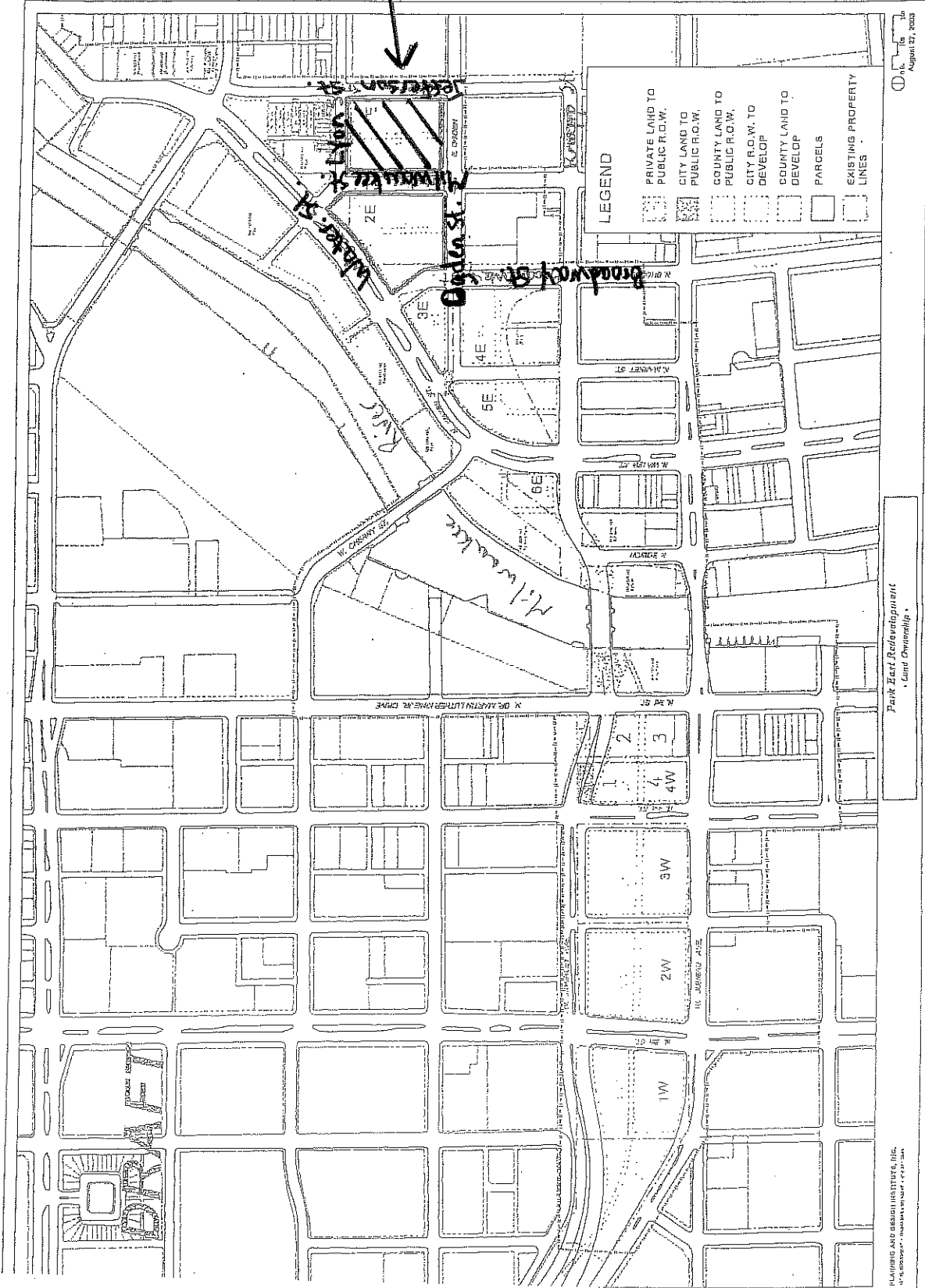
SE COR. OF
 SW 1/4 OF
 SEC 21-7-22
 TO CONC.
 W/ ALUM. CAP

SW COR. OF
 SW 1/4 OF
 SEC 21-7-22
 TO CONC.
 W/ ALUM. CAP

S. LINE SW 1/4 SECTION 21 56875.51'E 2626.31'
 7636.25' S100°



Subject
Block 26
(aka Block One)



PLANNING AND DESIGN SERVICES, INC.
1000 BROADWAY, SUITE 2000, DENVER, CO 80202
TEL: 303.733.1111 FAX: 303.733.1112
WWW.PDSINC.COM

Park East Redevelopment
East Overhill

August 27, 2008