

COUNTY OF MILWAUKEE
INTEROFFICE COMMUNICATION

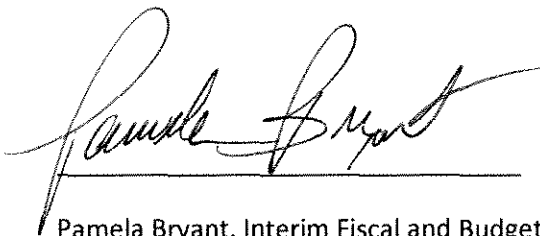
Date: January 4, 2012

To: Supervisor Michael Mayo, Chairman, Committee Transportation, Public Works, & Transit

From: Pamela Bryant, Interim Fiscal and Budget Administrator, Department of Administrative Services

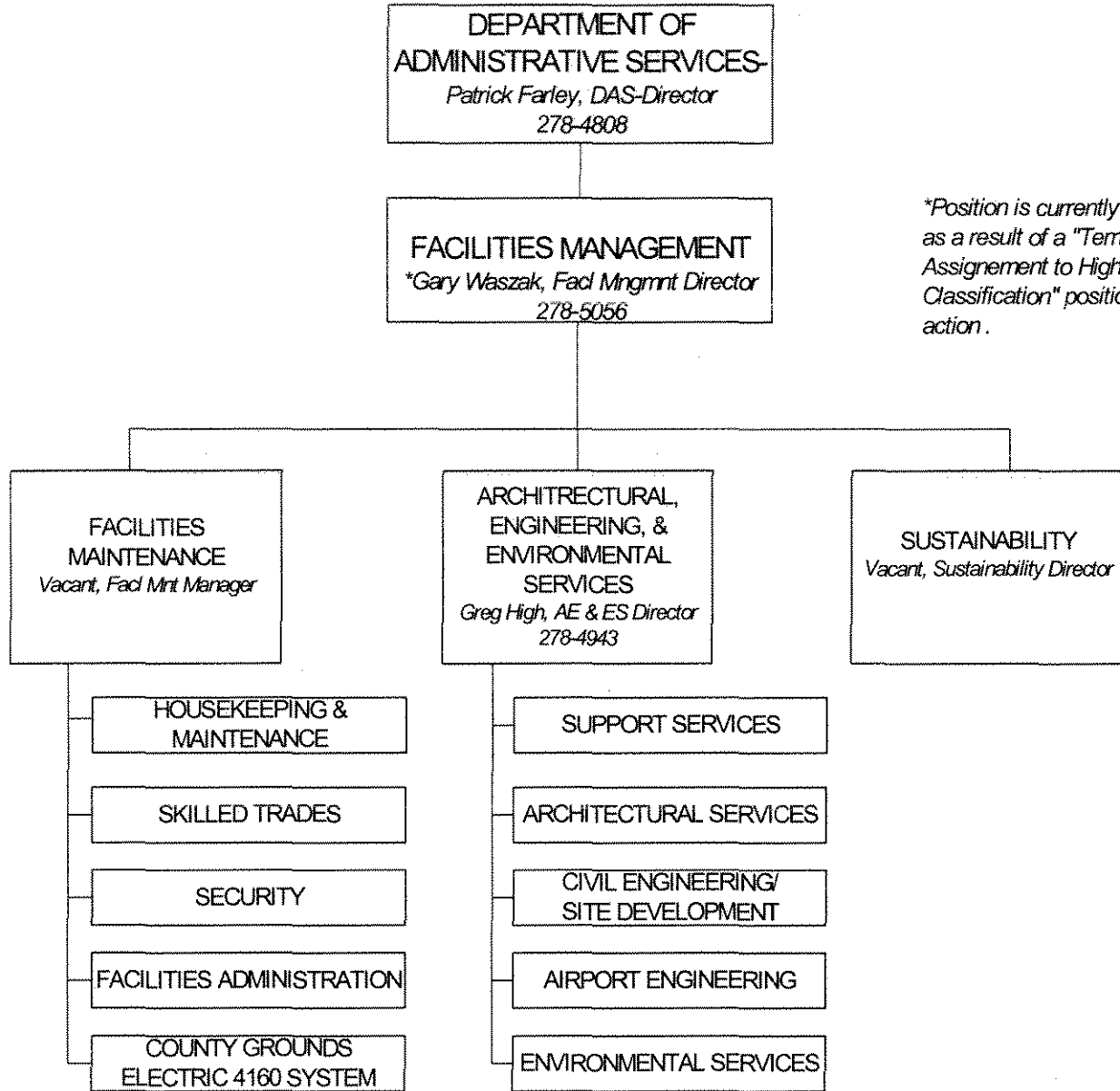
Subject: Organizational Chart for DAS-Facilities Management Division and the DAS-Economic Development Division as authorized in the 2012 Adopted Budget

At the request of the County Board Transportation, Public Works, & Transit Committee, DAS-Fiscal has prepared and attached organizational charts relating to the reorganizations of the DAS-Facilities Management Division and the DAS-Economic Development Division as authorized in the 2012 Adopted Budget. The organizational chart for the Department of Transportation (DOT) is attached in a separate report prepared by DOT staff.

A handwritten signature in cursive script, appearing to read "Pamela Bryant", is written over a solid horizontal line.

Pamela Bryant, Interim Fiscal and Budget Administrator

DAS Facilities Management



*Position is currently filled as a result of a "Temporary Assignment to Higher Classification" position action.

DAS – Economic Development

