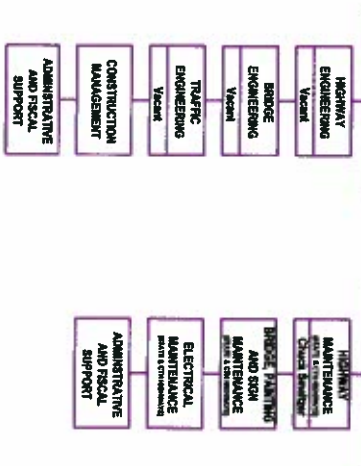
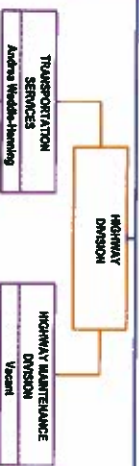
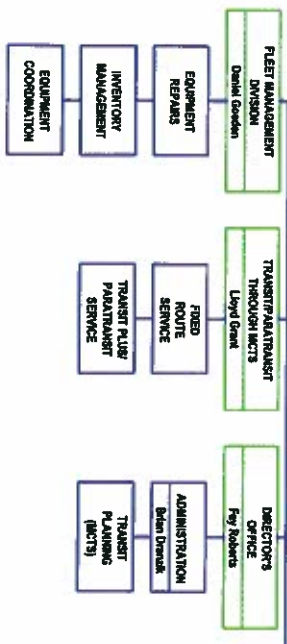


**PROPOSED  
2012**

**COUNTY  
EXECUTIVE  
CHRIS ABELE**

DEPARTMENT OF  
TRANSPORTATION (DOT)  
FRANK BRISLACH



**COLOR DESIGNATION**

- ORANGE >>>>>>> PROPOSED NEWLY CREATED (2012)
- PURPLE >>>>>>> PROPOSED CONSOLIDATION (2012)
- GREEN >>>>>>> UNCHANGED (2012)
- GREY >>>>>>> UNCHANGED (2012)

04/11/2011