

Milwaukee County's Complete Communities Transportation Planning Project

Milwaukee County Department of Transportation

Donna Brown-Martin – Director of Transportation
Jeff Sponcia – Transportation Program Planning Manager

July 10th, 2024

**INCREASE
MULTIMODAL
SAFETY FOR ALL
ROADWAY USERS**



MILWAUKEE COUNTY
**Complete
Communities**

county.milwaukee.gov/CompleteCommunities

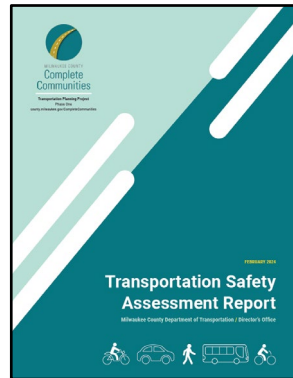


**MILWAUKEE
COUNTY**

**ADDRESS
RECKLESS DRIVING
CRISIS
COUNTYWIDE**

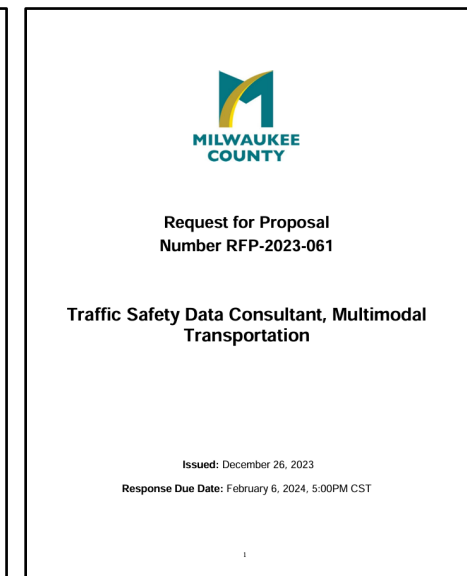
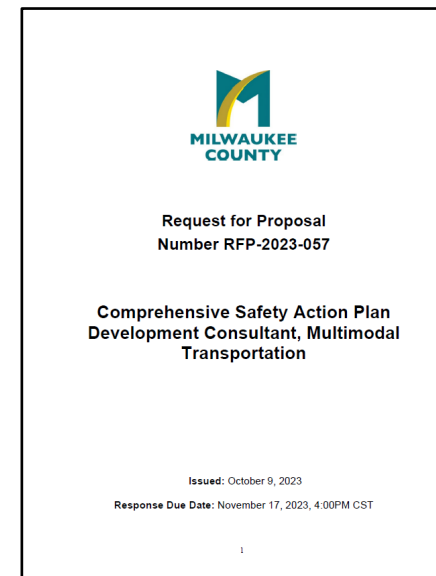
Phase One (TAP funded)

- **Public engagement meetings in each municipality (22 in all) including four within the City of Milwaukee (one in Spanish)**
- **Generate a Transportation Safety Assessment report to synthesize resident and roadway user feedback with local and national historical crash data trends**

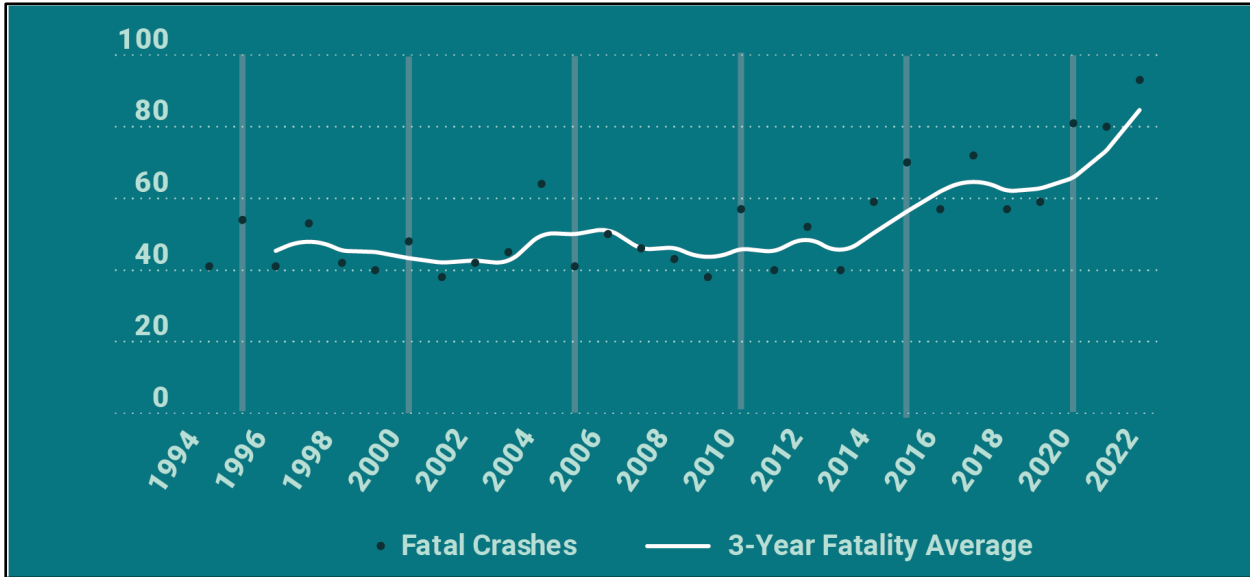


Phase Two (SS4A funded)

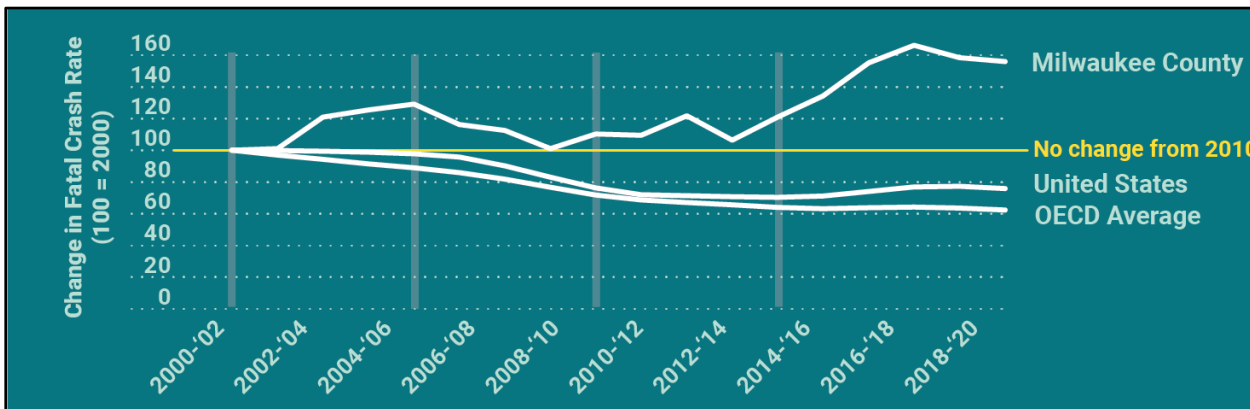
- **Generate a Safe Streets Action Plan for Milwaukee County**
- **Generate Safe Streets Action Plans for each participating municipality**
- **Two nationally-renowned consultant teams from RFP process**



Severe Crash Trends



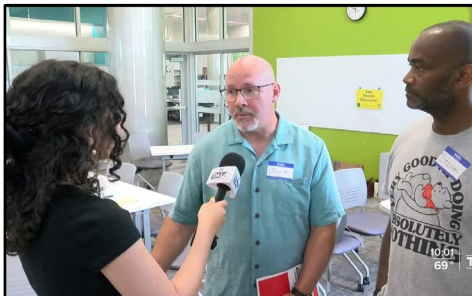
- Milwaukee County's fatal and serious injury crashes have increased sharply since 2014



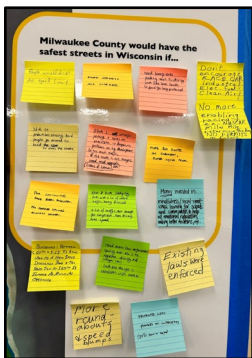
- The increase is more drastic in Milwaukee County compared to the rest of the United States and other OECD nations



**Safe Streets Roadshow
roll-up banner for
tabling events**



**TMJ4 News Coverage of Safe
Streets Roadshow at Good
Hope Branch of Milwaukee
Public Library**



**Safe Streets Roadshow in
Cudahy and South Milwaukee**



**WHAT WOULD SAFER
STREETS MEAN FOR
YOUR COMMUNITY?**



Complete Communities is an effort to
increase multimodal safety and address
reckless driving across Milwaukee County.



Visit county.milwaukee.gov/CompleteCommunities
or use the QR code above to learn more!



Streets Mentioned Often

- Capitol Drive
- Silver Spring Drive
- Fond du Lac Avenue
- Chicago Avenue
- National Avenue
- Lake Drive
- 60th Street
- 27th Street
- 76th Street
- North Avenue

Key Takeaways

- Drivers are changing behavior and travel patterns (driving less, different routes)
- Residents would feel safer if...
 - More people used other modes
 - Vehicles slowed down
 - Rules were understood
 - Streets were designed for people instead of vehicles

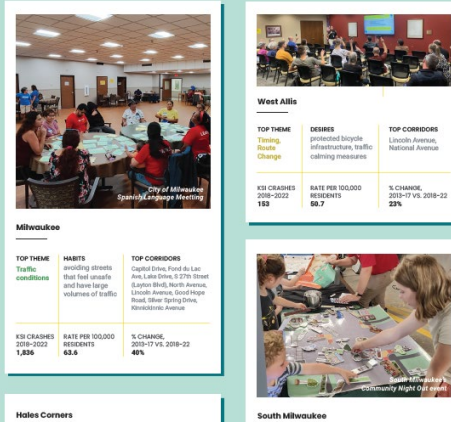


Transportation Safety Assessment Report

Our recently-published 50-page report provides data-driven analysis and resident observational feedback about the safety status of roadways in Milwaukee County. Some findings are...

- 51% of the crashes happen on 11% of the streets
- Black residents are 2.1 times more likely to be fatal crash victims
- Capitol Drive is the street with the highest crash rate AND the street mentioned most by Milwaukee County residents as concerning
- Residents want more speed humps, traffic circles, lanes dedicated for buses and bikes

Community Assessment By the numbers



Crash Inequities in Milwaukee County

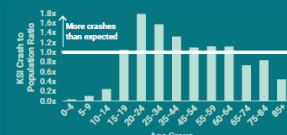


Fig. 10 Proportion of Fatal & Serious Injury Crash Victims by Age Group Relative to Population for Milwaukee County

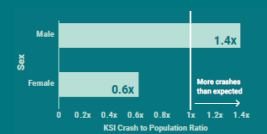


Fig. 11 Proportion of Fatal & Serious Injury Crash Victims by Sex Relative to Population for Milwaukee County

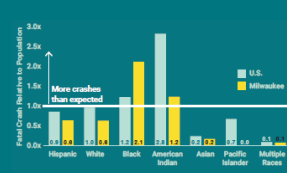
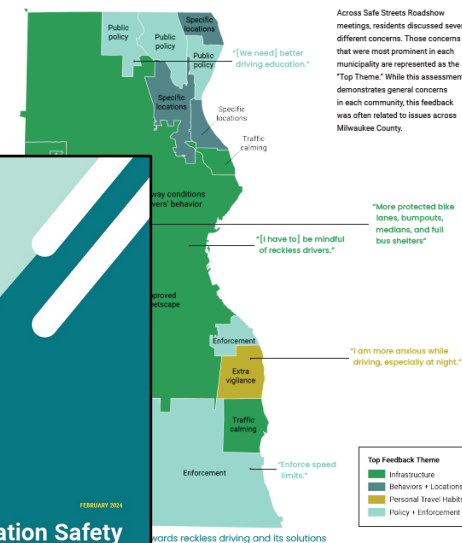


Fig. 12 Proportion of Fatal Crash Victims by Race/Ethnicity Relative to Population for Milwaukee County

Community Assessment

Dominant Feedback Theme in Each Municipality



Transportation Safety Assessment Report

Milwaukee County Department of Transportation / Director's Office



Motor Vehicle Collision (MVC) Dashboard

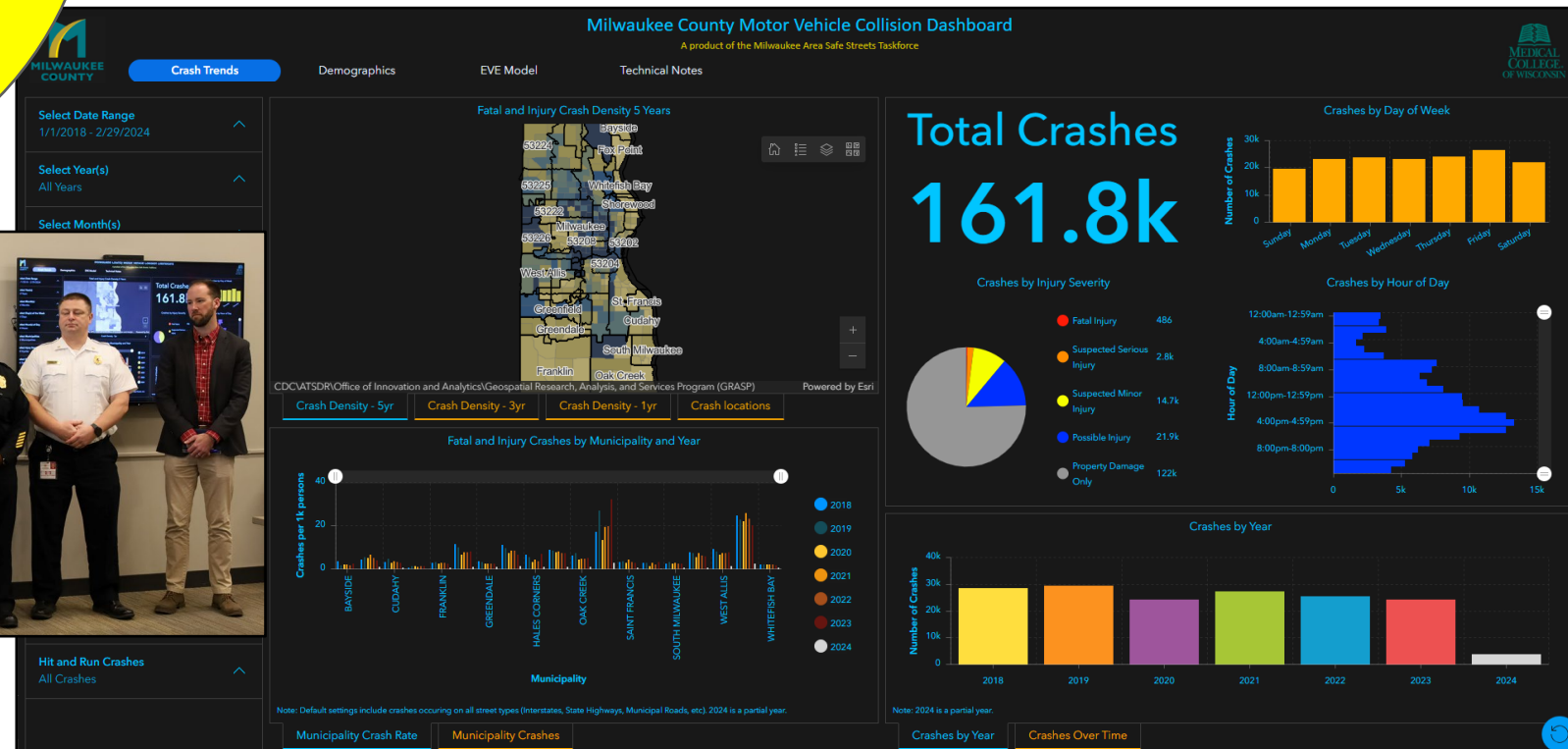
Use the new Milwaukee County MVC Dashboard! Visit:

county.milwaukee.gov/MVC

This dashboard's going to help us move closer to the goal of zero fatalities and help us deploy innovative and data-driven strategies all across Milwaukee County to keep drivers, bicyclists, transit riders, and pedestrians safe...and track our level of success.



**Milwaukee County Executive
David Crowley**



Safe Streets and Roads for All (SS4A)

Having an Action Plan in place will make Milwaukee County and each participating municipality eligible to apply for billions of dollars in SS4A Implementation Funding starting in 2025 and future years.

- 1) **Safe Streets Action Plans for 18 of 19 municipalities are already in process.**
- 2) **\$1,000,000 Total**
 - a) **\$800,000 from USDOT/FHWA**
 - b) **\$200,000 from Milwaukee County**
- 3) **Action Plans must address eight different components:**
 - a) **Leadership Commitment and Goal Setting**
 - b) **Planning Structure**
 - c) **Safety Analysis**
 - d) **Engagement and Collaboration**
 - e) **Equity Considerations**
 - f) **Policy and Process Changes**
 - g) **Strategy and Project Selections**
 - h) **Progress and Transparency**



Director of Transportation
Donna Brown-Martin

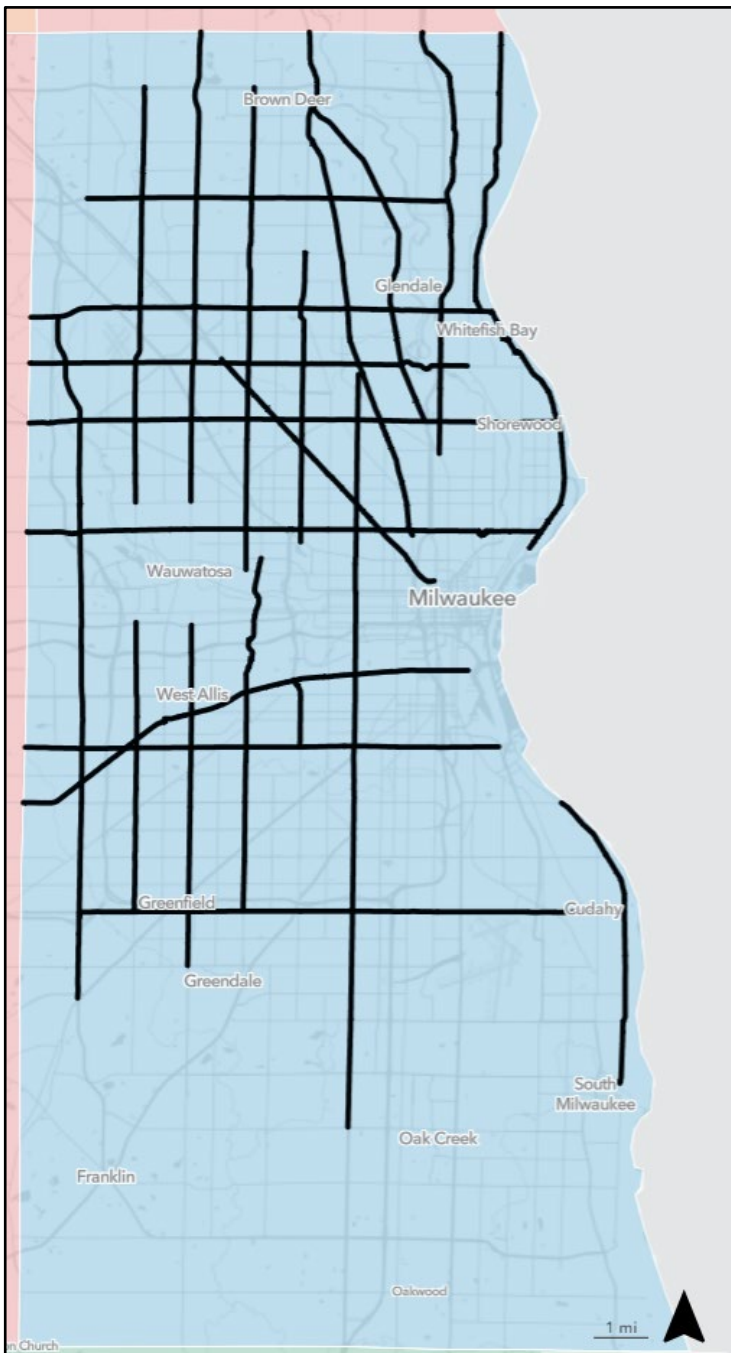
Consultant Teams

Action Plan Development



Traffic Safety Data Analysis





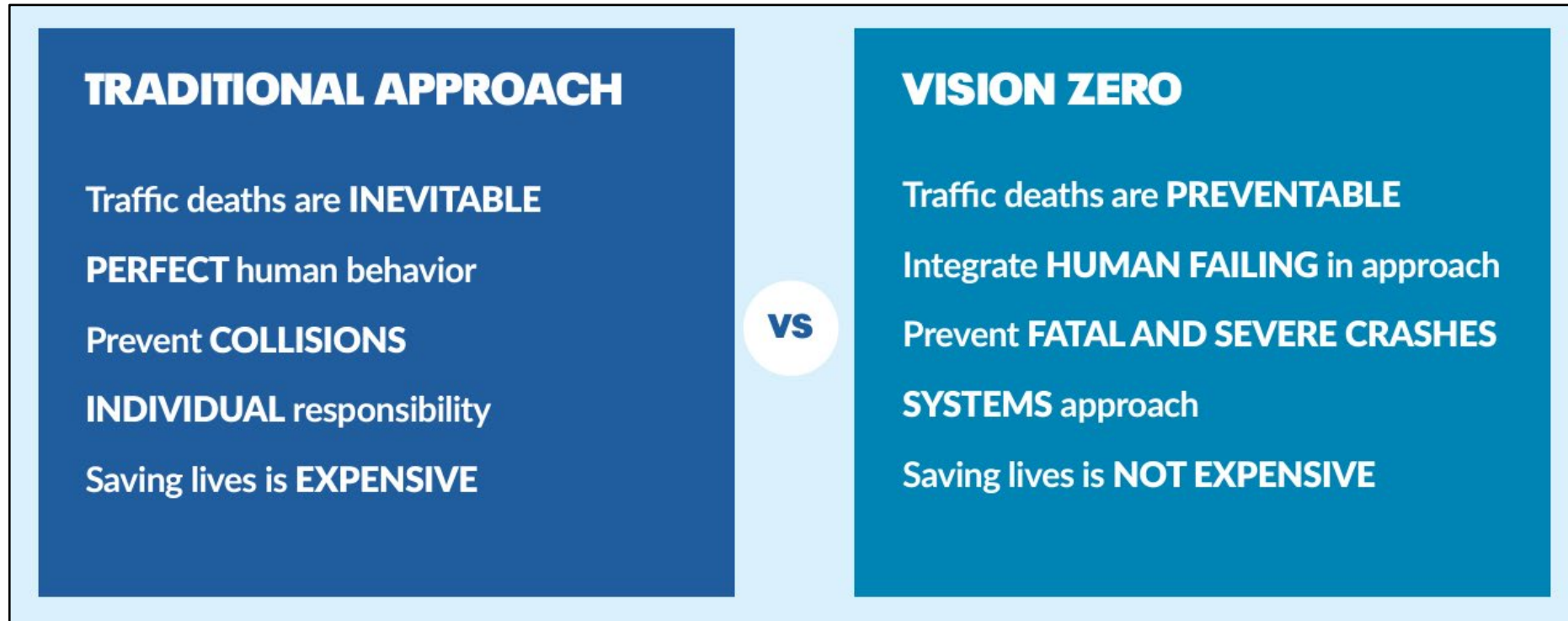
Corridors of Concern

- 27th St.
- 60th St.
- 76th St.
- 92nd St.
- 108th St.
- Capitol Dr.
- Fond du Lac Ave.
- Good Hope Rd.
- Green Bay Ave.
- Hampton Ave.
- Lake Dr.
- Layton Ave.
- Lincoln Ave.
- Mayfair Rd.
- Miller Park Way
- National Ave.
- North Ave.
- Port Washington Rd.
- Sherman Blvd.
- Silver Spring Dr.
- Teutonia Ave.

(listed alphabetically)

Vision Zero

- **Vision Zero is a commitment to zero deaths and serious injuries on all roadways in Milwaukee County**
- **Milwaukee County needs to commit to a goal year and fatal and serious injury crash percentage reduction goals between now and the goal year**

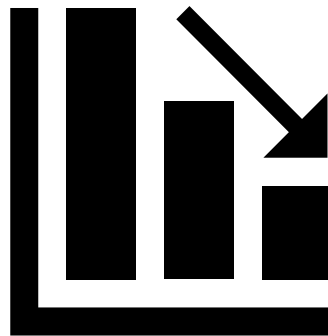


Safe System Approach



Vision Zero Year Goal and Percentage Reduction Goals

- **Resolution to commit to Vision Zero by the year 2037**
- **Percentage Reduction Goals for fatal and serious injury crashes**
 - **25% reduction by 2028 (compared to 2025)**
 - **50% reduction by 2031 (compared to 2025)**
 - **75% reduction by 2034 (compared to 2025)**
 - **100% reduction by 2037 (compared to 2025) to reach VISION ZERO**



Vision Zero



2037



Milwaukee County's Complete Communities Transportation Planning Project

Donna Brown-Martin – Director of Transportation
donna.brownmartin@milwaukeecountywi.gov
414-257-5987

Jeff Sponcia – Transportation Program Planning Manager
jeff.sponcia@milwaukeecountywi.gov
414-257-5948

QUESTIONS?



county.milwaukee.gov/CompleteCommunities

