



# Jackson Park Drive Project Update

March 12, 2024 | Committee on Parks and Culture











# Project Overview

2020 – Design funded. Concept planning and design begins for this segment of JPD/KK River Parkway

2021 – Project engagement begins

2023 – Detailed planning and design

2024 – Cost estimation for capital project request in 2025



# Context

Jackson Park Drive is in terrible shape

→ Rated 36/100 for pavement condition in 2017

The funding needs for park roads and parking takes away from Parks' ability to invest in meaningful recreational improvements

→ In 2023 - \$8,097,074 in Parks Capital project spending went to parking lot and road projects of \$17,478,819 total (46%)

→ For comparison, the 2023 capital budget supported \$678,860 for trails (3.9%), \$624,577 for playgrounds (3.6%), \$225,700 for athletic facilities (1.3%)

The KK River Parkway is a long road that spans 5.6 miles from S. 20th St to McCarty Park. It is being reconstructed in phases, the Jackson Park Drive segment is about 0.75 miles



# Jackson Park Drive – KK River Parkway

## For more information

To learn more about this project, scan the QR code or visit the project website:  
[www.mkecountyparks.org/kinnickinnic-river-parkway-jackson-park-drive](http://www.mkecountyparks.org/kinnickinnic-river-parkway-jackson-park-drive)



## Existing Conditions



Jackson Park Drive was reconstructed in 1984 with a design life of 20 years.



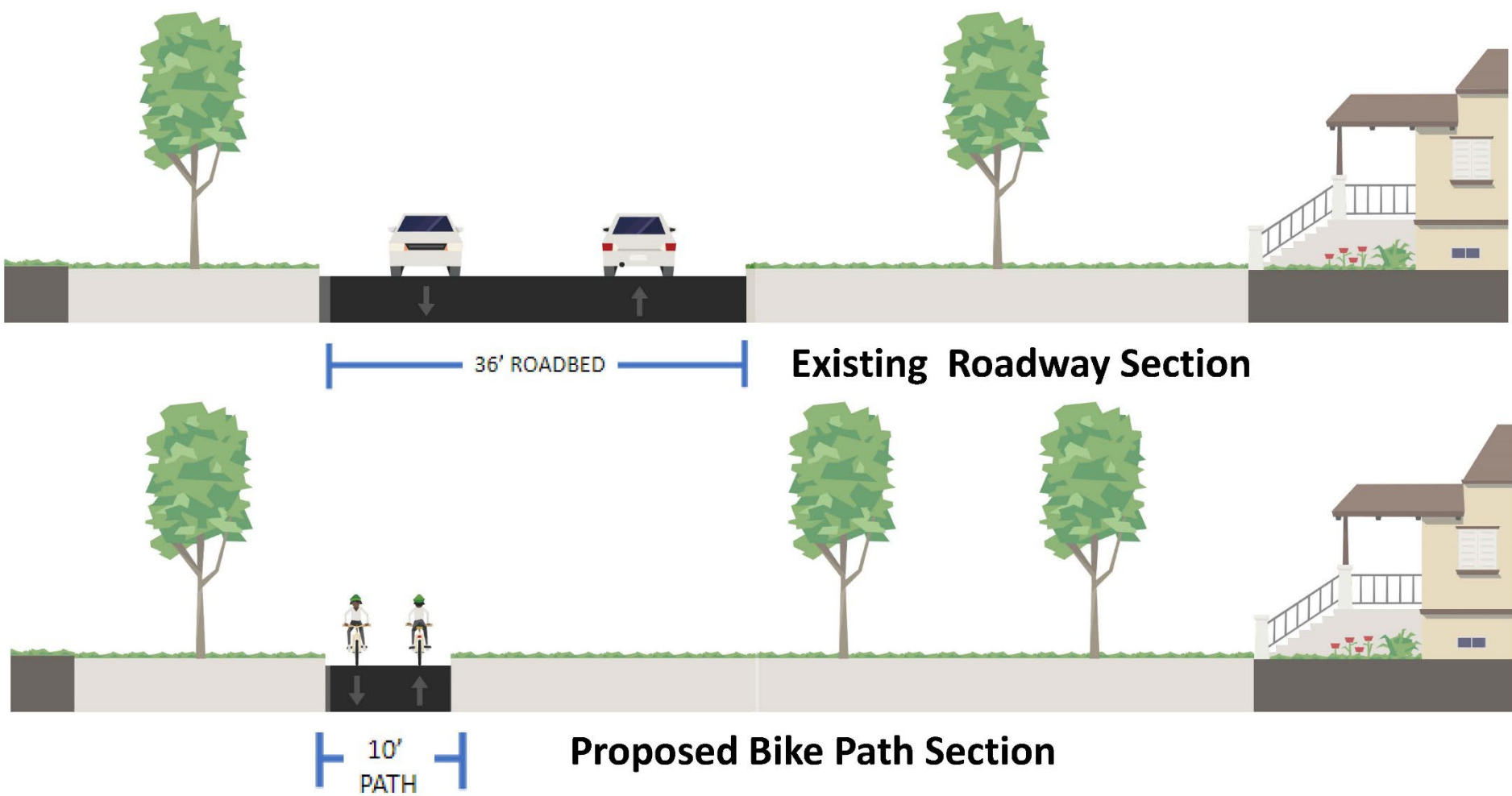
Poor pavement condition, uneven driving surface and increased potholes are visual signs of roadway deterioration.



Road salt and runoff go directly to the storm sewers and contribute to reduced water quality of the KK River and Lake Michigan.



## Solution



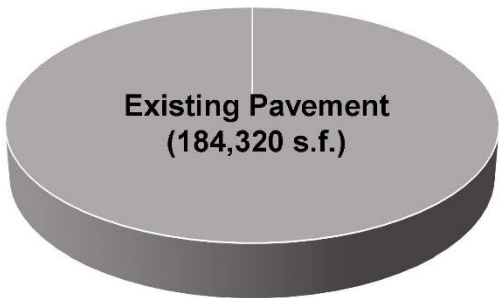
## Stormwater Benefits

Surfaces like pavement are “impervious”, meaning they don’t absorb water or slow flow.

Surfaces like grass and the soil beneath are “pervious,” meaning they absorb water and slow flow.

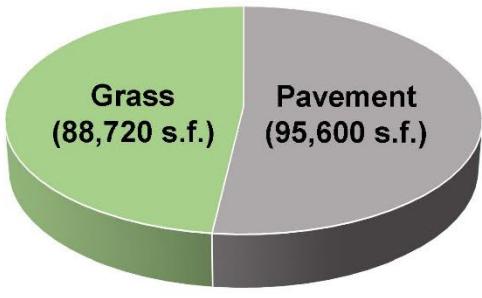
Reducing and slowing stormwater runoff enhances water quality and reduces flows through sewer systems.

Existing Roadway Section



One 5-Minute Storm Produces 860 Gallons of Stormwater Runoff

Proposed Pathway Alternative



One 5-Minute Storm Produces 460 Gallons of Stormwater Runoff



# Alternatives



A.Road with parallel trail

B.Road (47<sup>th</sup>-51<sup>st</sup>) with partial trail conversion – 51<sup>st</sup> to 5600 block

C.Road (47<sup>th</sup>-51<sup>st</sup> ; 53<sup>rd</sup> – 5600 block) with parallel trail and partial trail conversion – 51<sup>st</sup> to 53<sup>rd</sup>

D.Road with curb and gutter replacement



# Jackson Park Drive – KK River Parkway

For more information

To learn more about this project, scan the QR code or visit the project website:

[www.mkecountyparks.org/kinnickinnic-river-parkway-jackson-park-drive](http://www.mkecountyparks.org/kinnickinnic-river-parkway-jackson-park-drive)

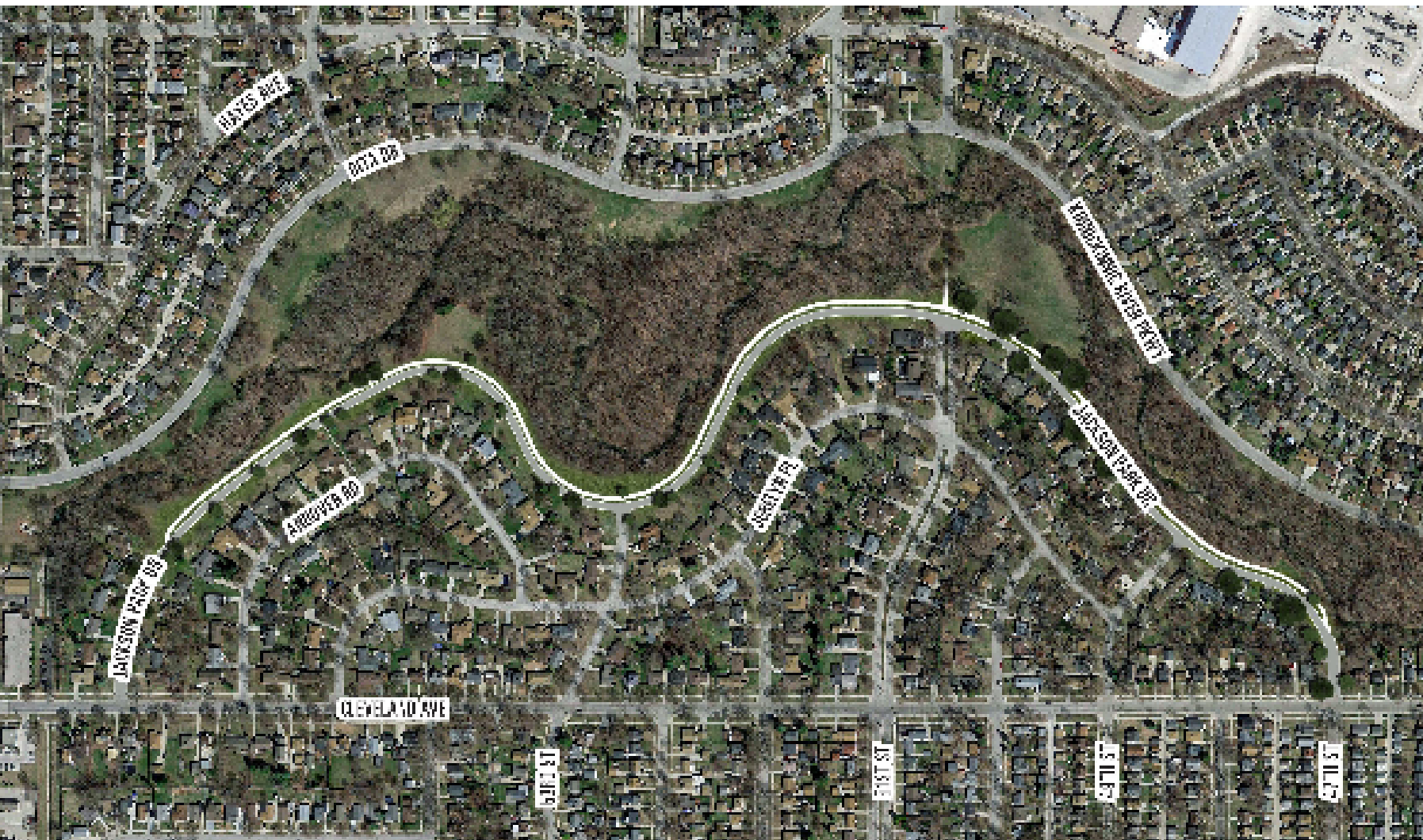
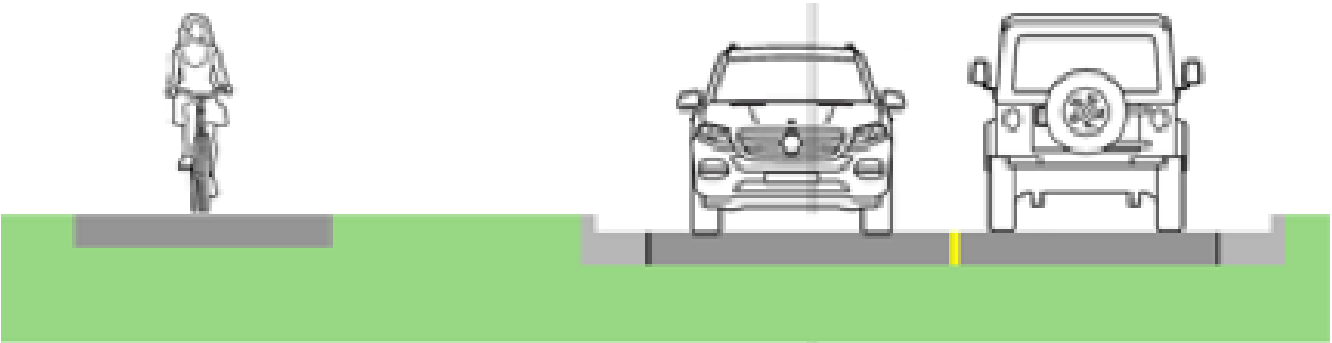


## Alternative A - Road & Trail

Existing Section



Proposed Section



Estimated Cost:  
\$2,052,785

Road Reconstructed: 5,090 LF  
Trail Constructed: 4,414 LF

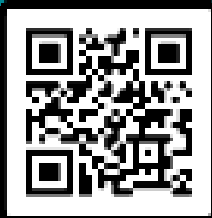
Alternative		Cost	Lifespan	Greenprint Sustainability	Provides Recreational Opportunity	Part of Transportation Grid	Minimizes Impact to Natural Resources	Total Points
A	Reconstruct City Road In-Kind; Reduce Width of Jackson Park Drive to Just North of Northernmost Driveway on Westbound Side; 10-ft Trail Alongside Narrowed JPD; Reconstruct Remainder In-Kind	\$2,052,785	20 years	Limited (0 points)	Yes (1 point)	Yes (1 point)	No (-1 point)	1
B	Reconstruct City Road and County Parks Road from 47th to 51st In-Kind; Convert Road to 10-ft Trail in-Between	\$1,551,025	20 years	Yes (1 point)	Yes (1 point)	Limited (0 points)	Yes (1 point)	3
C	Reconstruct City Road In-Kind; Reduce Width of Jackson Park Drive to 55th; Convert Road to 10-ft Trail from 53rd to 51st; Reduce Width of Jackson Park Drive from 51st to Just North of Northernmost Driveway on Westbound Side; 10-ft Trail Alongside Narrowed JPD; Reconstruct Remainder In-Kind	\$1,540,704	20 years	Limited (0 points)	Yes (1 point)	Limited (0 points)	Yes (1 point)	2
D	Reconstruct Jackson Park Drive In-Kind and Replace 25% of the Curb & Gutter	\$1,775,399	10 years	No (-1 point)	Limited (0 points)	Yes (1 point)	No (-1 point)	1
Cost or Impact to Preference Criteria:		1 point						
Minimal Impact to Preference Criteria:		0 points						
Negative Impact to Preference Criteria:		-1 point						



# Jackson Park Drive – KK River Parkway

For more information

To learn more about this project, scan the QR code or visit the project website:  
[www.mkecountyparks.org/kinnickinnic-river-parkway-jackson-park-drive](http://www.mkecountyparks.org/kinnickinnic-river-parkway-jackson-park-drive)

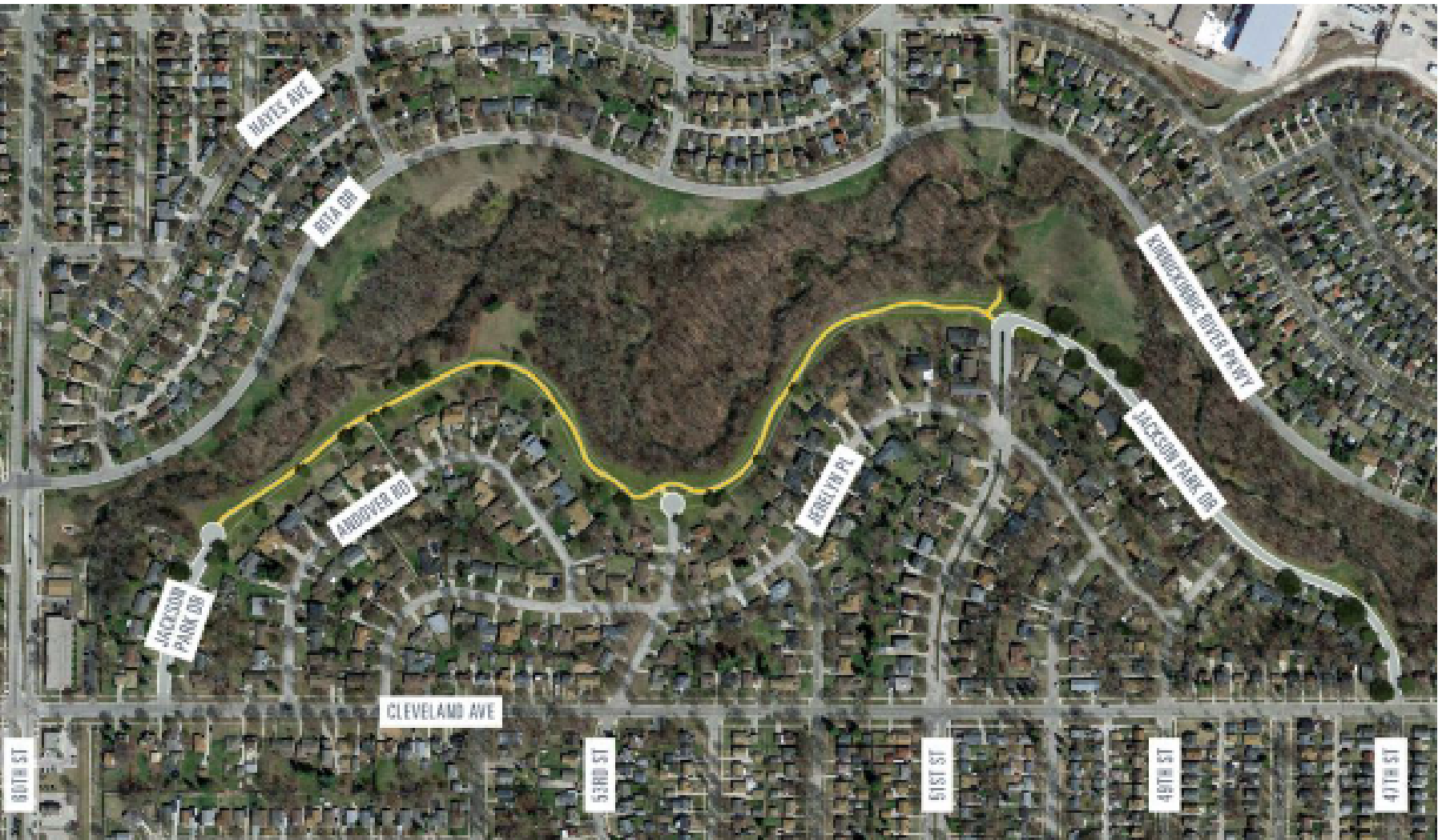


## Alternative B – Partial Trail Conversion

Existing Section



Proposed Section



Estimated Cost:  
\$1,531,025

Road Reconstructed: 2,026 LF  
Trail Constructed: 4,414 LF

Milwaukee County Parks Preference Criteria						
Alternative	Cost	Lifespan	Greenprint Sustainability	Provides Recreational Opportunity	Part of Transportation Grid	Minimizes Impact to Natural Resources
A	\$2,052,785	20 years	Limited (0 points)	Yes (1 point)	Yes (1 point)	No (-1 point)
B	\$1,531,025	20 years	Yes (1 point)	Yes (1 point)	Limited (0 points)	Yes (1 point)
C	\$1,840,704	20 years	Limited (0 points)	Yes (1 point)	Limited (0 points)	Yes (1 point)
D	\$1,773,569	10 years	No (-1 point)	Limited (0 points)	Yes (1 point)	No (-1 point)
Total Points						
Positive Impact to Preference Criteria: 1 point						
Minimal Impact to Preference Criteria: 0 points						
Negative Impact to Preference Criteria: -1 point						



# Jackson Park Drive – KK River Parkway

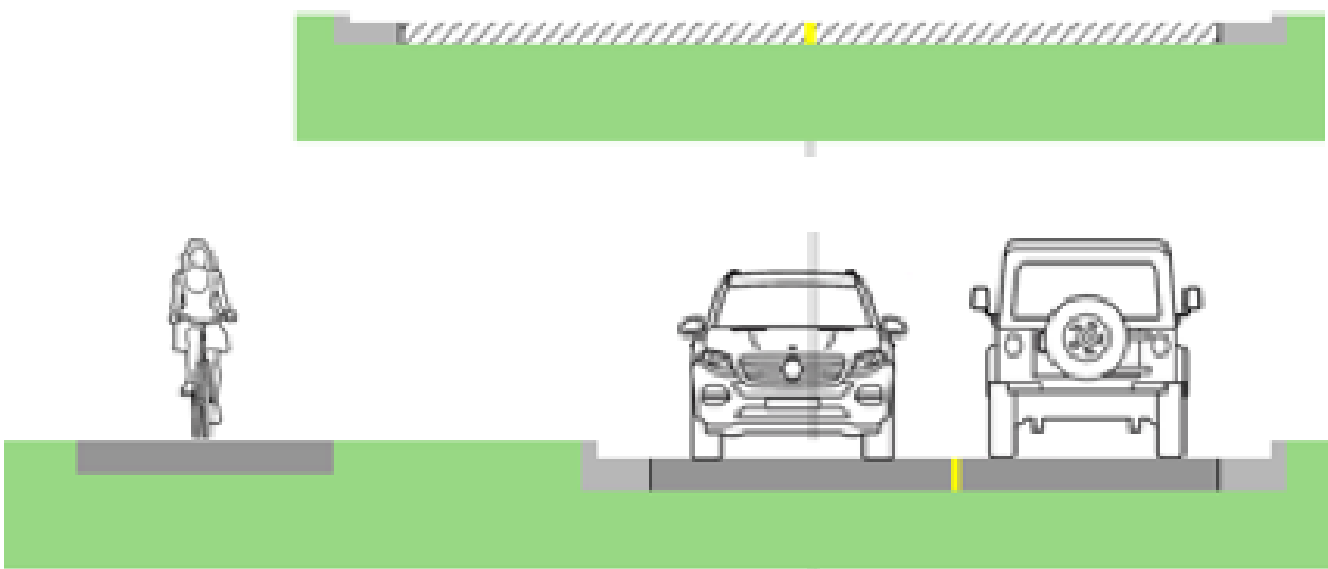
For more information

To learn more about this project, scan the QR code or visit the project website:  
[www.mkecountyparks.org/kinnickinnic-river-parkway-jackson-park-drive](http://www.mkecountyparks.org/kinnickinnic-river-parkway-jackson-park-drive)

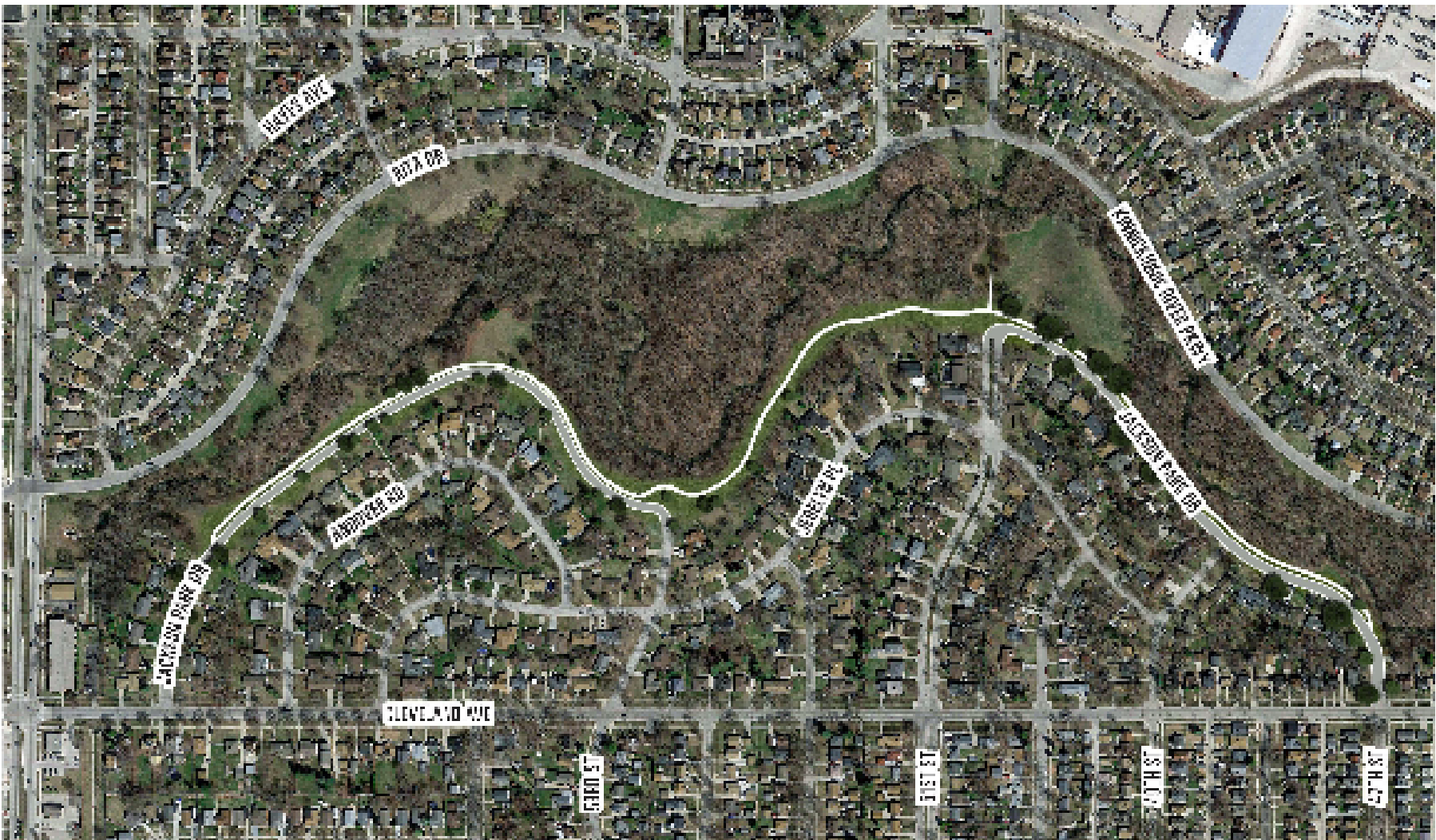
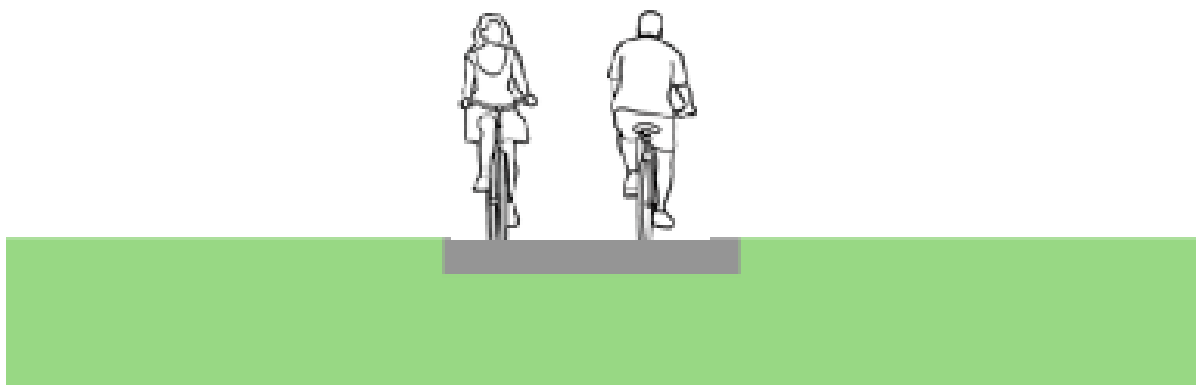


## Alternative C – Road and Trail & Trail Only From 51<sup>st</sup> to 53<sup>rd</sup>

Existing Section



Proposed Section



Estimated Cost:  
**\$1,840,704**

Road Reconstructed: 3,895 LF  
Trail Constructed: 4,414 LF

Alternative		Cost	Lifespan	Greenprint Sustainability	Provides Recreational Opportunity	Part of Transportation Grid	Minimizes Impact to Natural Resources	Total Points
A	Reconstruct City Road In-Kind; Reduce Width of Jackson Park Drive to Just North of Northmenist Drive on Westbound Side; 10-Ft Trail Alongside Narrowed JPD; Reconstruct Remainder In-Kind	\$2,052,785	20 years	Limited (0 points)	Yes (1 point)	Yes (1 point)	No (-1 point)	1
B	Reconstruct City Road and County Park Road from 47th to 51st In-Kind; Convert Road to 10-Ft Trail In-Between	\$1,551,625	20 years	Yes (1 point)	Yes (1 point)	Limited (0 points)	Yes (1 point)	3
C	Reconstruct City Road In-Kind; Reduce Width of Jackson Park Drive to 51st; Convert Road to 10-Ft Trail from 51st to 53rd; Reduce Width of Jackson Park Drive from 51st to Just North of Northmenist Drive on Westbound Side; 10-Ft Trail Alongside Narrowed JPD; Reconstruct Remainder In-Kind	\$1,840,704	20 years	Limited (0 points)	Yes (1 point)	Limited (0 points)	Yes (1 point)	2
D	Reconstruct Jackson Park Drive In-Kind and Replace 55% of the Curb & Gutter	\$1,773,099	10 years	No (-1 point)	Limited (0 points)	Yes (1 point)	No (-1 point)	-1
Positive Impact to Preference Criteria:		1 point						
Minimal Impact to Preference Criteria:		0 points						
Negative Impact to Preference Criteria:		-1 point						





# Jackson Park Drive – KK River Parkway

For more information

To learn more about this project, scan the QR code or visit the project website:  
[www.mkecountyparks.org/kinnickinnic-river-parkway-jackson-park-drive](http://www.mkecountyparks.org/kinnickinnic-river-parkway-jackson-park-drive)

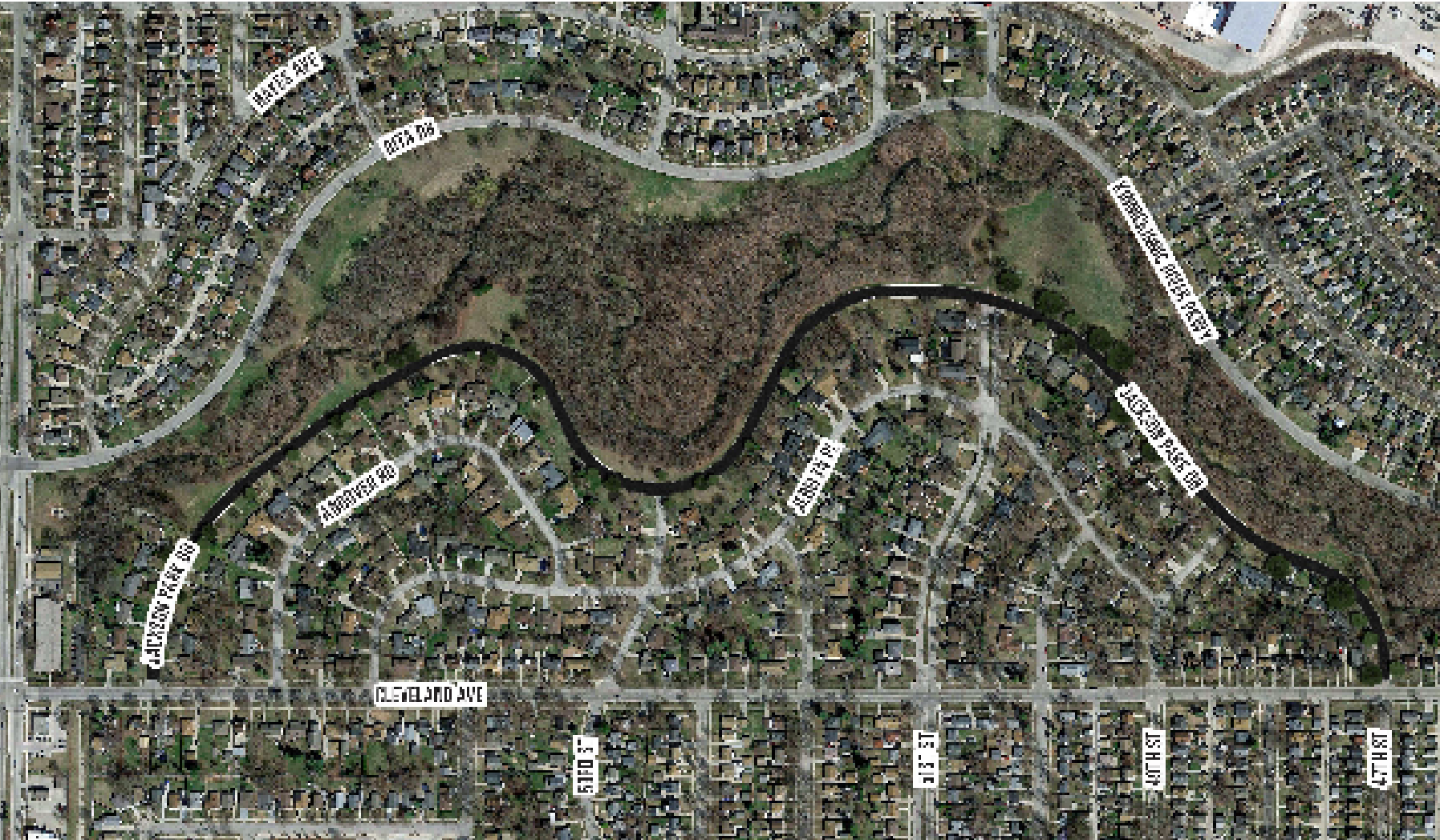
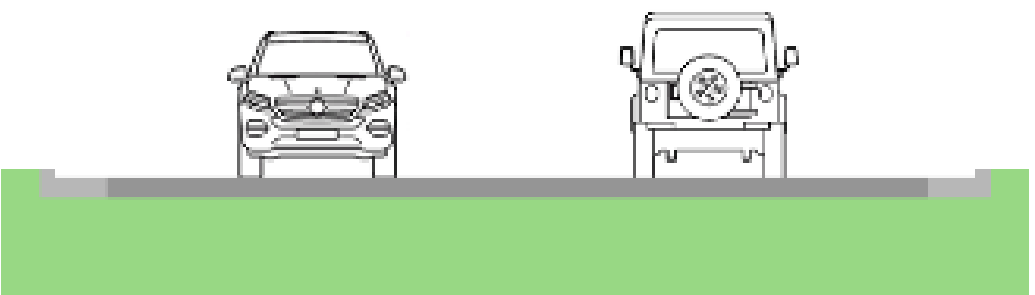


## Alternative D – Roadway and 35% Curb & Gutter Replacement

Existing Section



Proposed Section



Estimated Cost:  
\$1,773,399

Road Reconstructed: 5,090 LF  
Trail Constructed: 0 LF

Alternative		Milwaukee County Parks Preference Criteria						Total Points
		Cost	Lifespan	Greenprint Sustainability	Provides Recreational Opportunity	Part of Transportation Grid	Minimizes Impact to Natural Resources	
A	Reconstruct City Road In-Kind. Reduce Width of Jackson Park Drive to Just North of Northernmost Driveway on Westbound Side; 10-ft Trail Alongside Narrowed IP; Reconstruct Remainder In-Kind	\$2,052,785	20 years	Limited (0 points)	Yes (1 point)	Yes (1 point)	No (-1 point)	-1
B	Reconstruct City Road and County Park Road from 47th to 51st In-Kind; Convert Road to 10-ft Trail In-Between	\$1,581,005	20 years	Yes (1 point)	Yes (1 point)	Limited (0 points)	Yes (1 point)	2
C	Reconstruct City Road In-Kind; Reduce Width of Jackson Park Drive to 57th; Convert Road To 10-ft Trail from 51st to 57th; Reduce Width of Jackson Park Drive from 51st to Just North of Northernmost Driveway on Westbound Side; 10-ft Trail Alongside Narrowed IP; Reconstruct Remainder In-Kind	\$1,840,704	20 years	Limited (0 points)	Yes (1 point)	Limited (0 points)	Yes (1 point)	2
D	Reconstruct Jackson Park Drive In-Kind and Replace 35% of the Curb & Gutter	\$1,773,399	10 years	No (-1 point)	Limited (0 points)	Yes (1 point)	No (-1 point)	-1
Positive Impact to Preference Criteria:		1 point						
Minimal Impact to Preference Criteria:		0 points						
Negative Impact to Preference Criteria:		-1 point						



# Criteria and Analysis



**Milwaukee County Parks Preference Criteria**

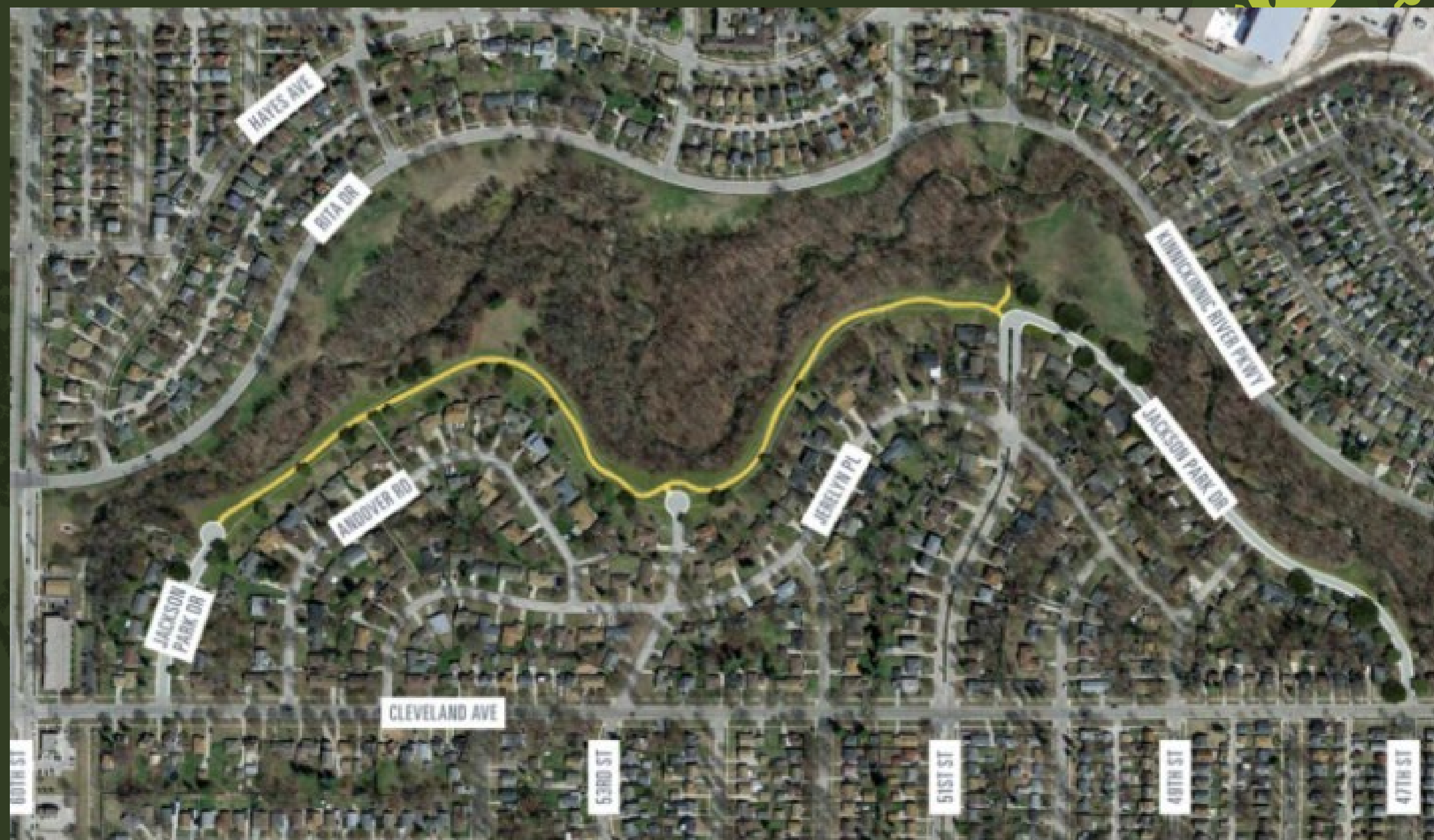
	Alternative	Cost	Lifespan	Greenprint Sustainability	Provides Recreational Opportunity	Part of Transportation Grid	Minimizes Impact to Natural Resources	Total Points
A	Reconstruct City Road In-Kind; Reduce Width of Jackson Park Drive to Just North of Northernmost Driveway on Westbound Side; 10-ft Trail Alongside Narrowed JPD; Reconstruct Remainder In-Kind	\$2,052,785	20 years	Limited (0 points)	Yes (1 point)	Yes (1 point)	No (-1 point)	1
B	Reconstruct City Road and County Parks Road from 47th to 51st In-Kind; Convert Road to 10-ft Trail In-Between	\$1,531,025	20 years	Yes (1 point)	Yes (1 point)	Limited (0 points)	Yes (1 point)	3
C	Reconstruct City Road In-Kind; Reduce Width of Jackson Park Drive to 53rd; Convert Road To 10-ft Trail from 53rd to 51st; Reduce Width of Jackson Park Drive from 51st to Just North of Northernmost Driveway on Westbound Side; 10-ft Trail Alongside Narrowed JPD; Reconstruct Remainder In-Kind	\$1,840,704	20 years	Limited (0 points)	Yes (1 point)	Limited (0 points)	Yes (1 point)	2
D	Reconstruct Jackson Park Drive In-Kind and Replace 35% of the Curb & Gutter	\$1,773,399	10 years	No (-1 point)	Limited (0 points)	Yes (1 point)	No (-1 point)	-1

	Positive Impact to Preference Criteria:	1 point
	Minimal Impact to Preference Criteria:	0 points
	Negative Impact to Preference Criteria:	-1 point



# Preferred Alternative

B.Road (47<sup>th</sup>-51<sup>st</sup>) with  
partial trail conversion  
– 51<sup>st</sup> to 5600 block

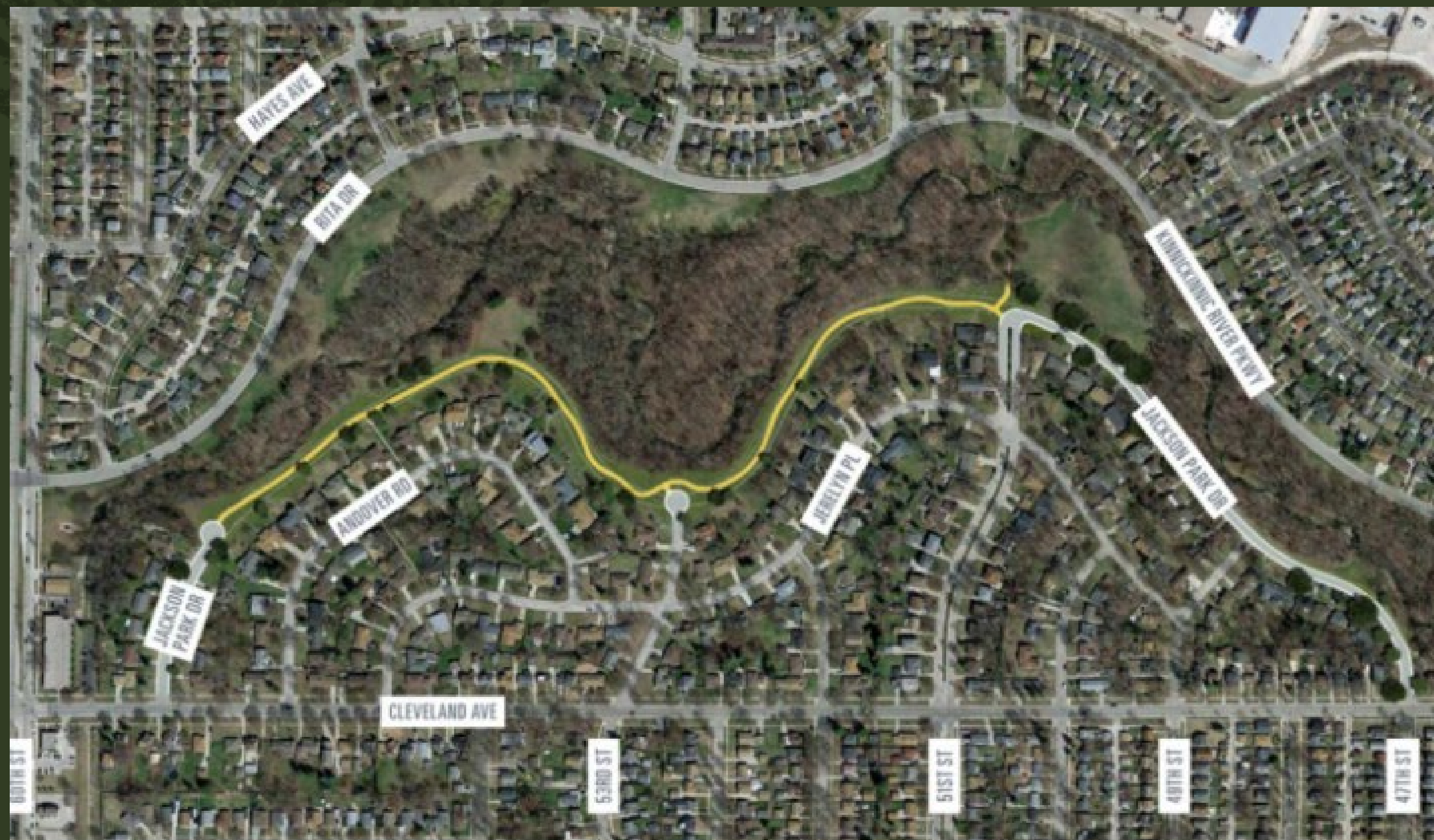


**Estimated Cost:**  
**\$1,531,025**

**Road Reconstructed: 2,026 LF**  
**Trail Constructed: 4,414 LF**

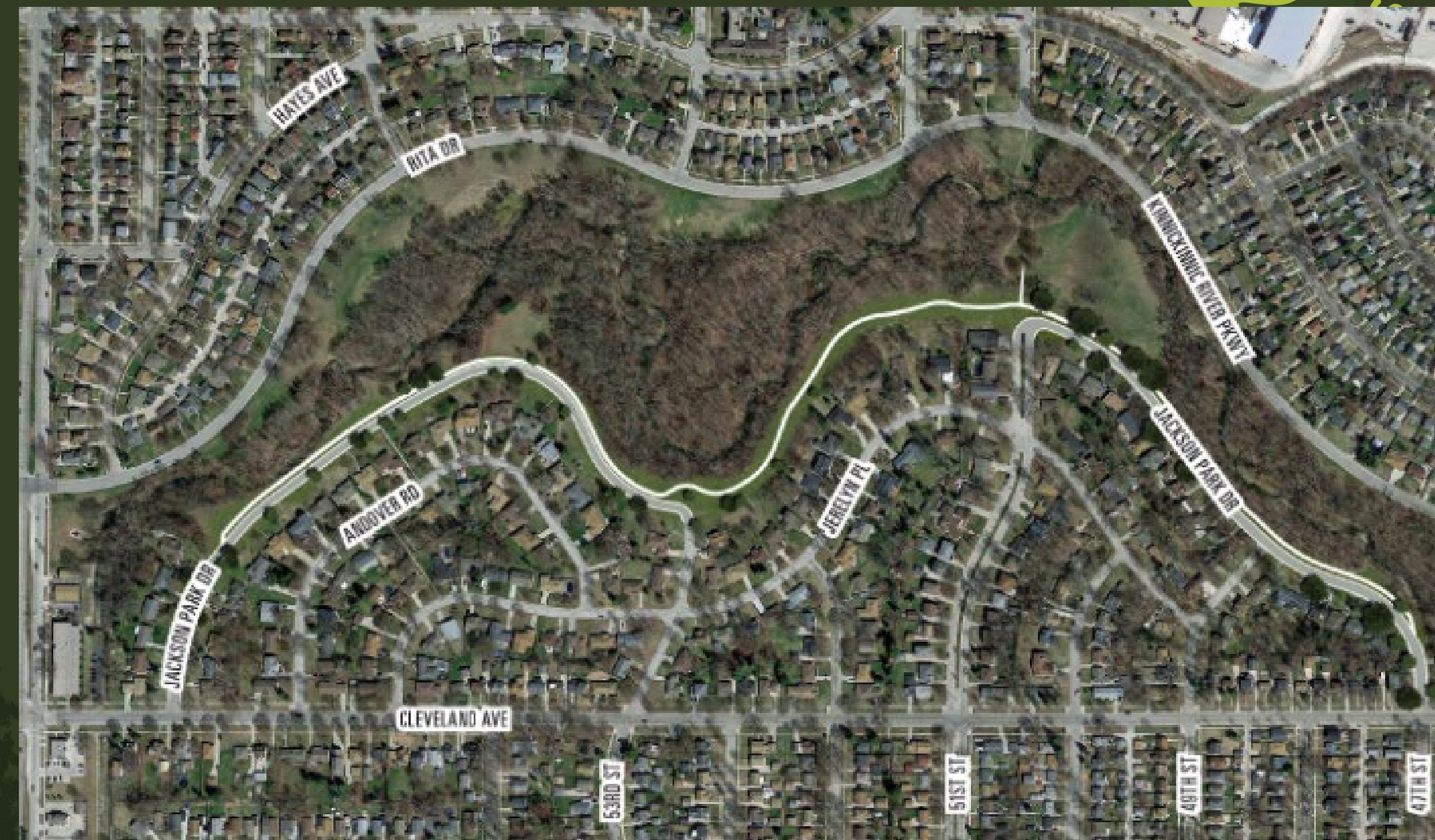


# Comparing Alts B and C



**Estimated Cost:**  
**\$1,531,025**

**Road Reconstructed: 2,026 LF**  
**Trail Constructed: 4,414 LF**



**Estimated Cost:**  
**\$1,840,704**

**Road Reconstructed: 3,895 LF**  
**Trail Constructed: 4,414 LF**

B. Road (47<sup>th</sup>-51<sup>st</sup>) with partial trail conversion – 51<sup>st</sup> to 5600 block

C. Road (47<sup>th</sup>-51<sup>st</sup> ; 53<sup>rd</sup> – 5600 block) with parallel trail and partial trail conversion – 51<sup>st</sup> to 53<sup>rd</sup>



# Next steps

- SEH continuing detailed design of Alternatives B and C
  - Pending passive review at Finance Committee
- Parks likely to submit request for construction funding in 2025 capital budget





# Questions?





Thank You!