

Reimagining WIS 175 Study Wisconsin Avenue to Lisbon Avenue SE Region

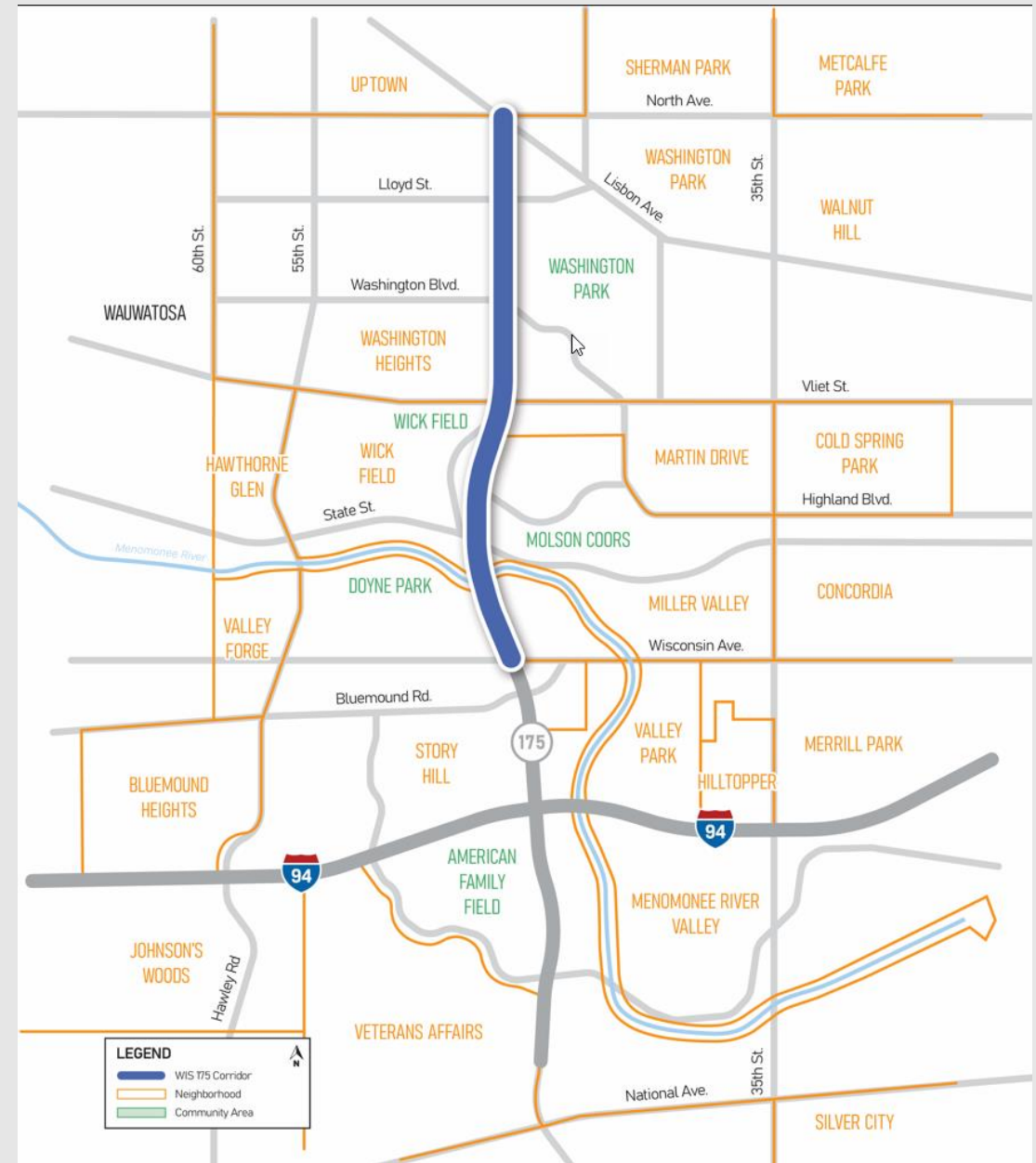
Presentation for Milwaukee County Committee on
Transportation and Transit

April 4, 2023



Project Overview

- Wisconsin Avenue to Lisbon Avenue
- City of Milwaukee
- Milwaukee County
- 1.5 miles
- Begins at the north limit of the I-94 E-W project



Reimagining WIS 175

The Wisconsin Department of Transportation (WisDOT) is partnering with Milwaukee County and the City of Milwaukee to collaboratively work on Reimagining WIS 175.

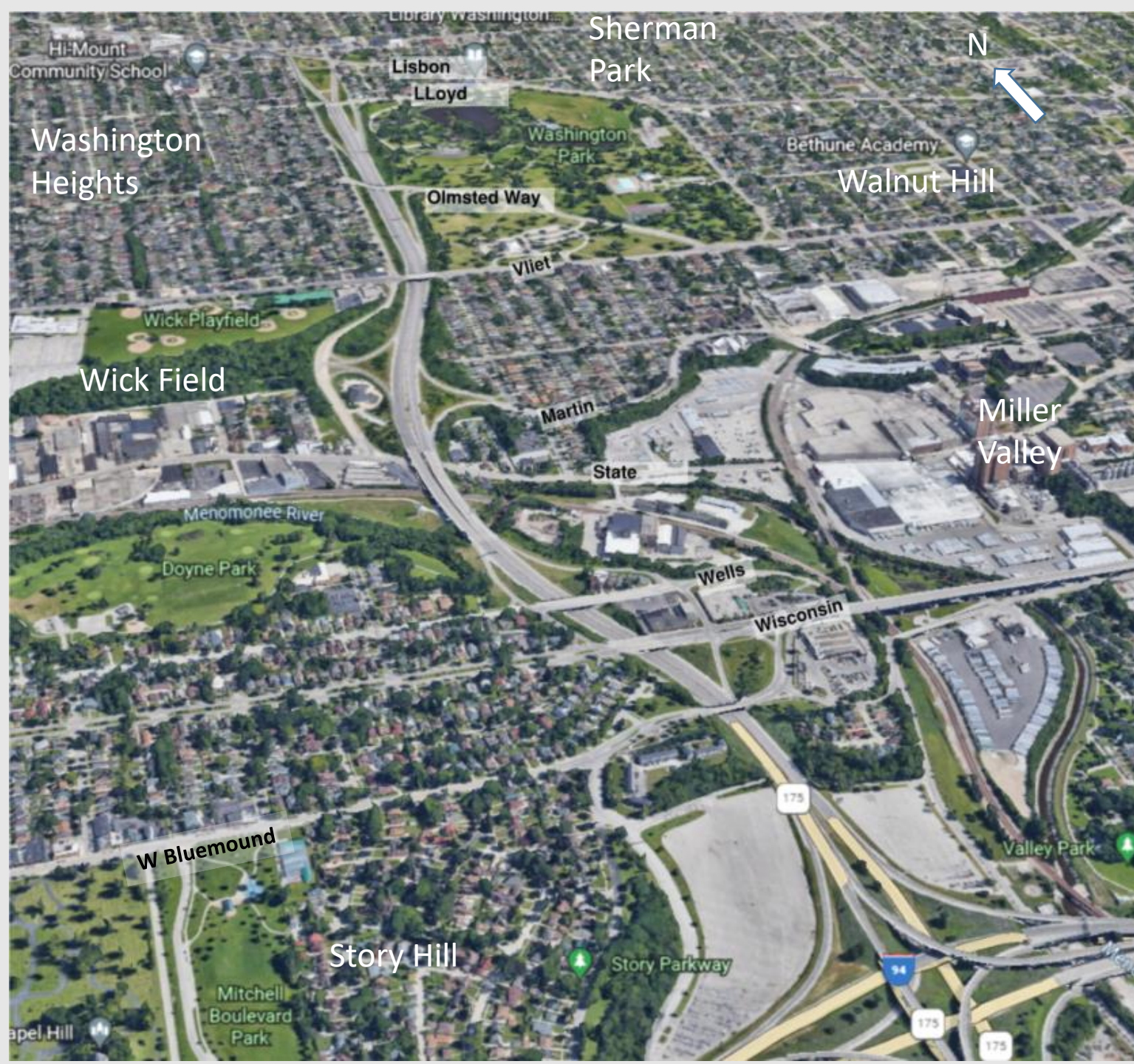
A Memorandum of Understanding (MOU) is being developed between WisDOT and the study partners.

Graef USA was selected as the consultant lead.



Reimagining WIS 175

This 6-lane urban freeway was constructed in 1962 and impacted Washington Park and many properties within the corridor. This section of WIS 175 was part of a larger freeway network that was never built. Now, the resulting depressed freeway with grade separated interchanges creates a disconnect between neighborhoods with a lack of pedestrian, bike and bus access.



WIS 175 Study Announced May 4, 2022

- Effort is a partnership with the city and county
- Address the safety and mobility concerns for pedestrians, bicyclists, and motorists in the community
- Meet the traffic needs and improve neighborhood cohesion



Goals

The Reimagining WIS 175 Study will take a comprehensive, holistic approach to evaluate potential, viable alternatives for the future WIS 175 corridor in a way that accommodates vehicles, transit, bicycle and pedestrian connections, connects neighborhoods, and promotes socio-economic vitality.



Scope of Study

- Partner with community stakeholders to identify the status of the existing roadway infrastructure and identify opportunities for potential future improvements.
- Analyze a variety of alternatives ranging from replacing the freeway to an at-grade street considering greenspaces, parks, land use and future development.
- Involve the community with robust public engagement.
 - Partnering with community based organizations, neighborhood associations, faith-based organizations to involve the community.
 - Attend local association meetings and neighborhood events.
 - Techniques: Community and Technical Advisory Groups, public involvement meetings, webpage, social pinpoint, newsletters, social media, design charrettes.
- Identify viable alternatives that meet the traffic and community needs with a focus on reconnecting communities.



Initial Outreach Efforts

PI Primary Research was conducted in February and March

- The purpose of this effort is to determine how to best communicate and reach out for the WIS 175 study.
- Community Based Organizations (CBO's) were contacted to help distribute the survey and solicit focus group participants to ensure representation from all neighborhoods and groups.
- A survey was sent out between 2/10 – 3/13 (419 responses as of 3/6).
- 2 focus group meetings were held on March 1. Virtual 11 – 12 pm (5 participants) and In-person 6 – 7 pm (10 participants).

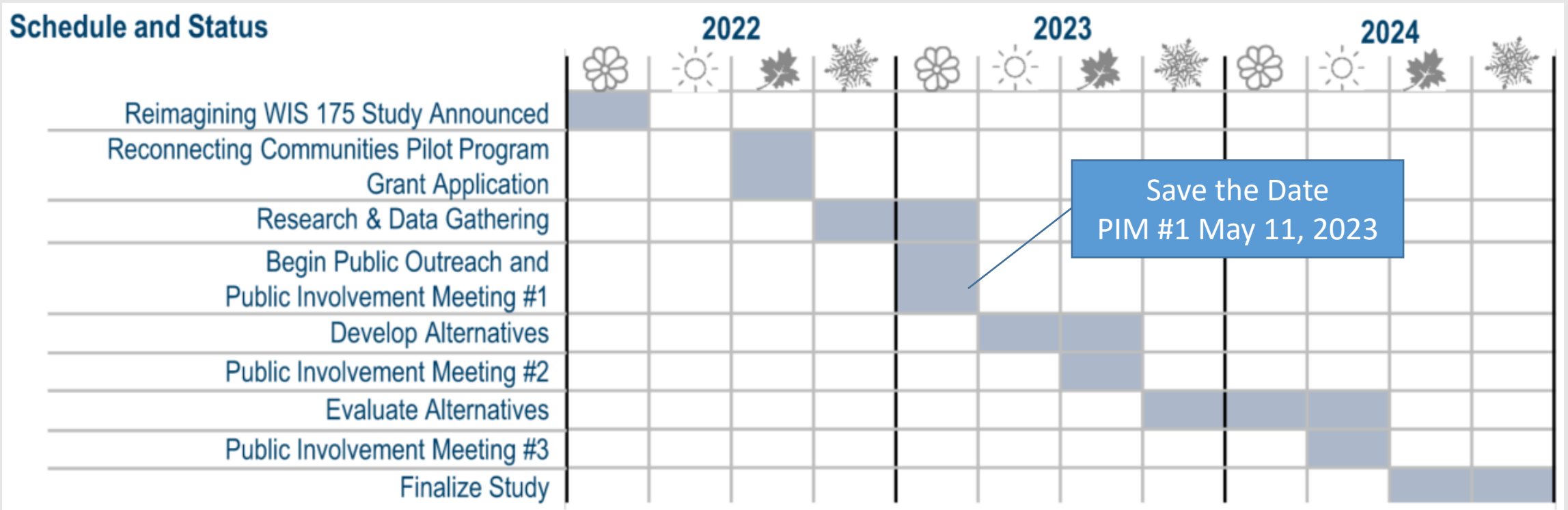
Upcoming efforts

- Neighborhood group/event meetings
- Continue CBO outreach
- Target audiences (churches, schools, businesses)
- PIM #1 – May 11, 2023, 4 – 7 pm, Washington Park Senior Center



Schedule

2-year study with a final report late 2024



Questions?

Visit the WIS 175 website as the project moves forward.

wisconsindot.gov/reimagine175

