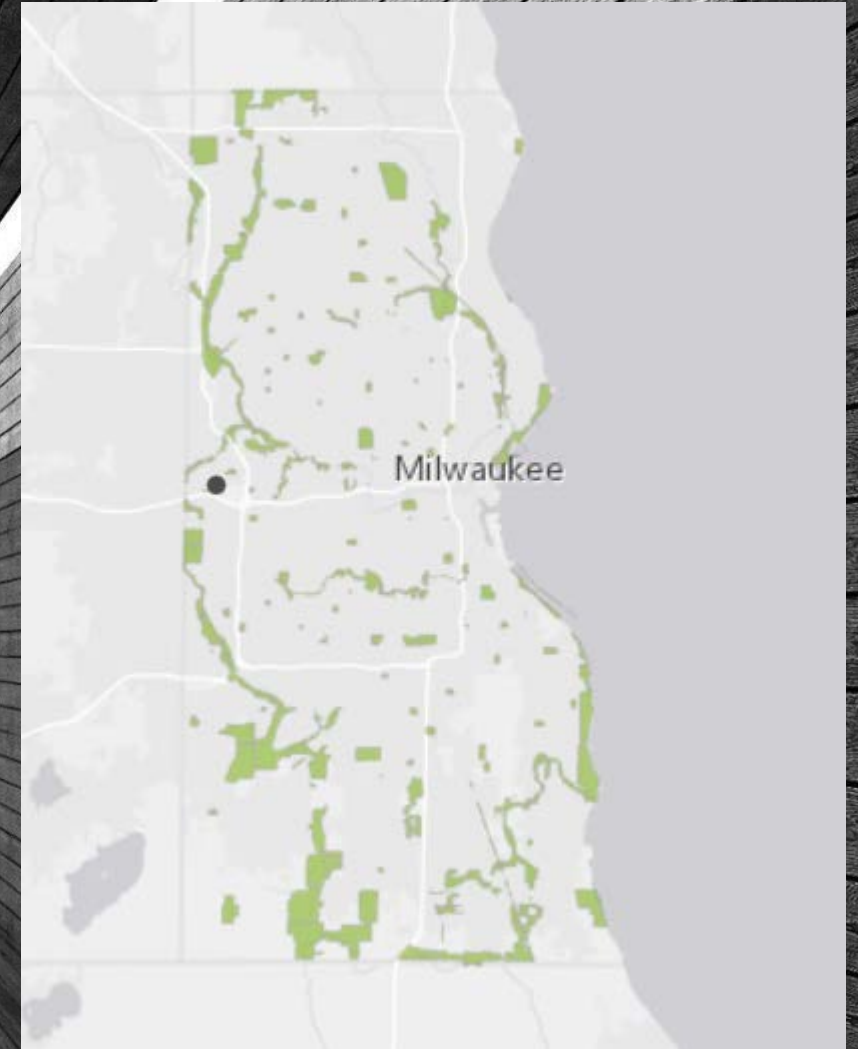


Milwaukee County

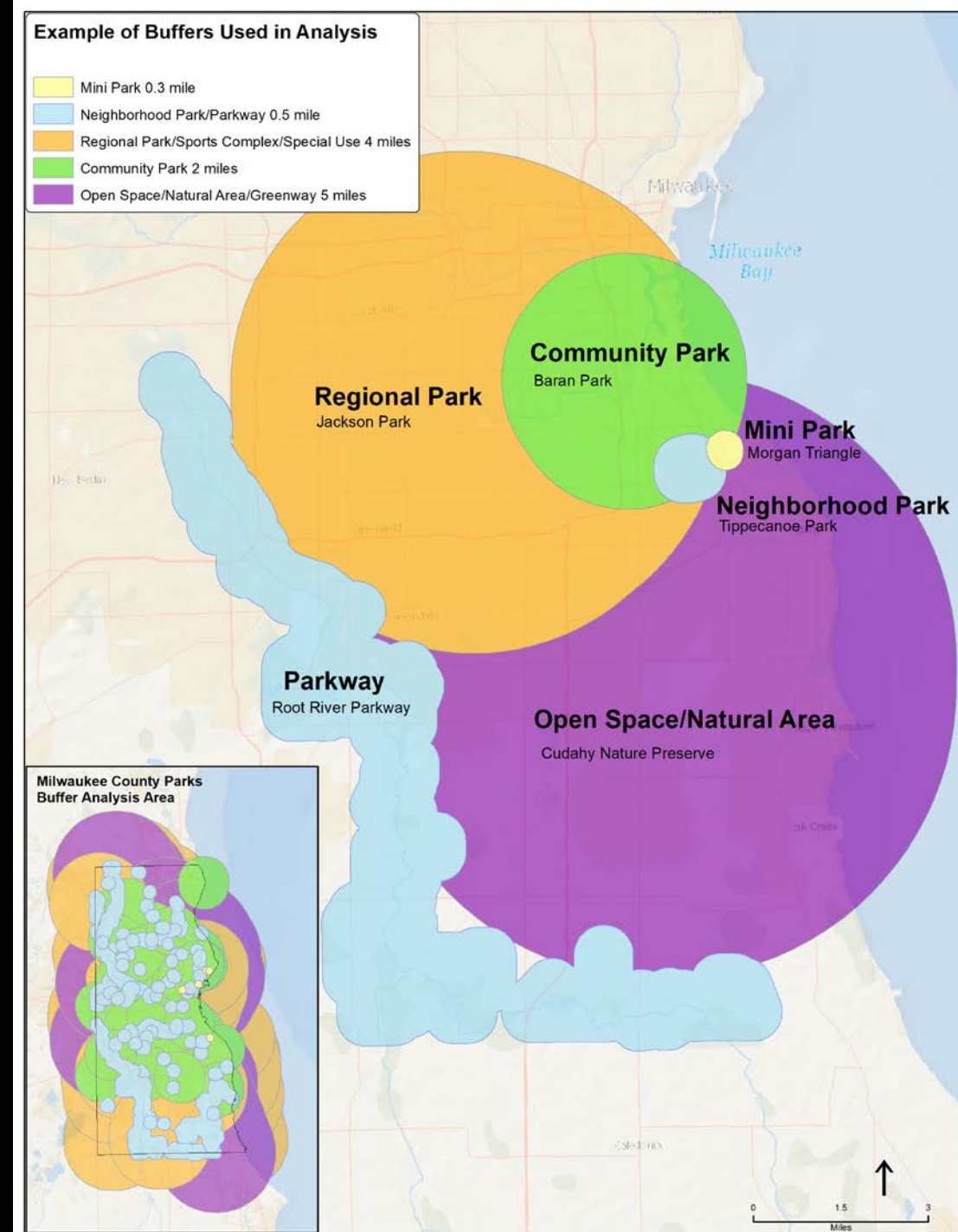
Parks Equity Index

2022 Approach & Updates

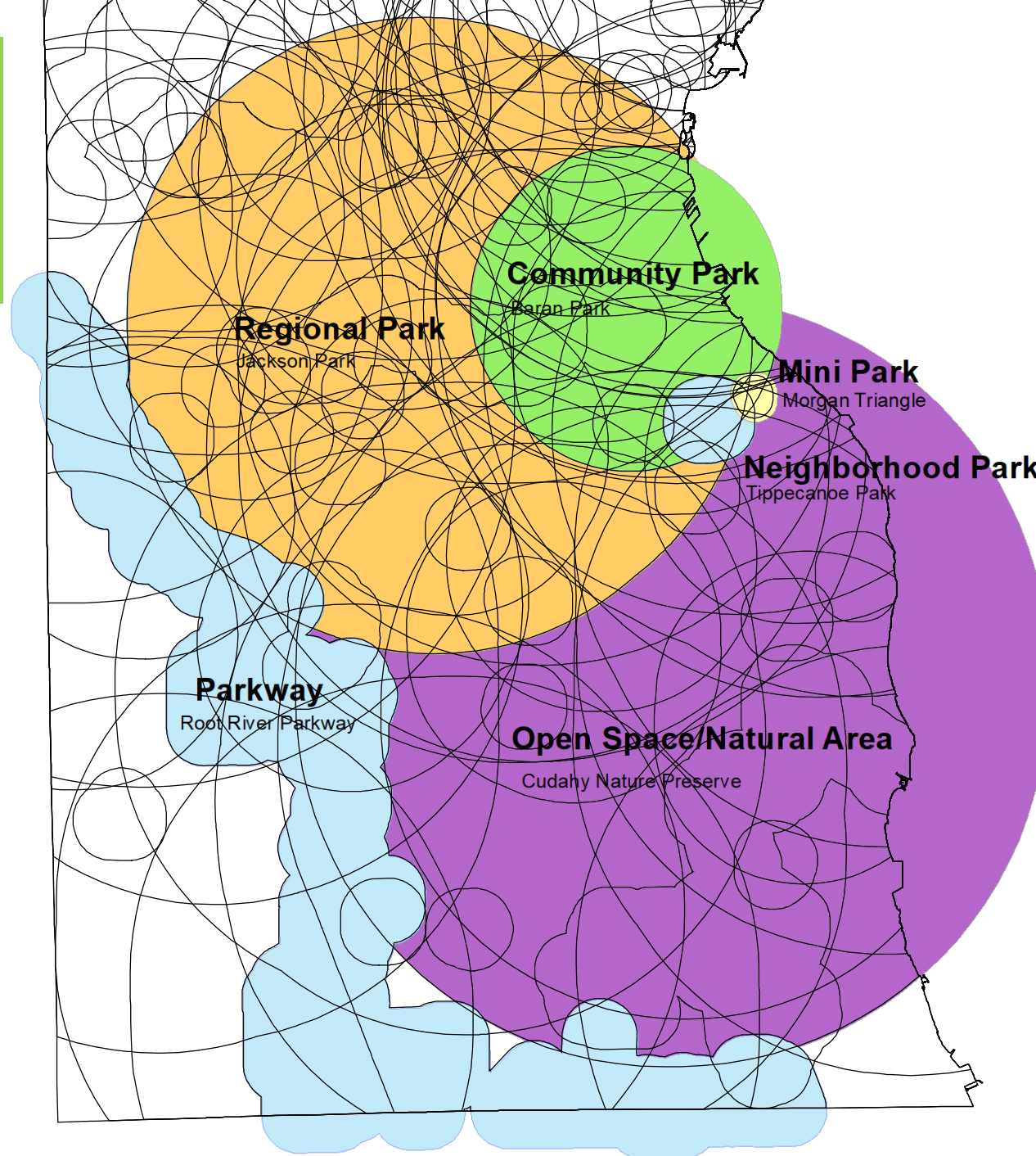


Park Typology - 2050 Parks and Open Space Plan

- **Regional Park** - Regional parks serve several communities and residents are predominantly natural resource based. 100 acres or more, Service radius: Four miles or greater.
- **Community Park** - A community park is accessible to multiple neighborhoods and focus on meeting community-based recreational needs while preserving unique landscapes and open spaces. 25 to 60 acres; may be up to 100 acres. Service radius: Two miles.
- **Neighborhood Park** - A neighborhood park may be defined by its use and facilities and may serve as the recreational and social focus of adjoining neighborhoods, contributing to their distinct identity. Three to 10 acres; occasionally smaller. Service radius: 0.5 mile.
- **Mini Park** - A mini park is a small site located in a dense/urban area with limited open space and recreational facilities. 2 acres or smaller; determined by availability of open land. Service radius: one-quarter to one-half mile.
- **Sports Complex** - A may be single-focused or multi-focused, include indoor and/or outdoor facilities, and may serve the recreational needs of youth and adults. Preferably 40+ acres for stand-alone complex. Service radius: Determined by community demand.
- **Special Use Facility** - A special use facility usually serves a single purpose. Special use facilities may be located inside another park or open space site and generally fall into three categories: historic/cultural/social sites, golf courses, and indoor or outdoor recreation facilities.
- **Parkways** - A parkway is a linear site featuring a roadway and a natural resource corridor, most often along major rivers and streams that connect communities, parks, and recreational and cultural components. A typical width of at least 200 feet, including the roadway and adjacent natural features.
- **Greenways** - A greenway is a narrow trail right-of-way that links neighborhoods, recreation facilities, attractions, and natural areas, or other park and open space sites and facilities. A typical width of at least 30 feet of unencumbered land. May include 10-foot-wide urban trail to support pedestrian/bicycle use.
- **Open Space/Natural Areas** - Open space/natural areas, undeveloped aside from any natural or paved trails, contain natural resources that can be managed for recreational and educational opportunities and for conservation benefits, such as protecting endangered species, wildlife habitat, and water quality.

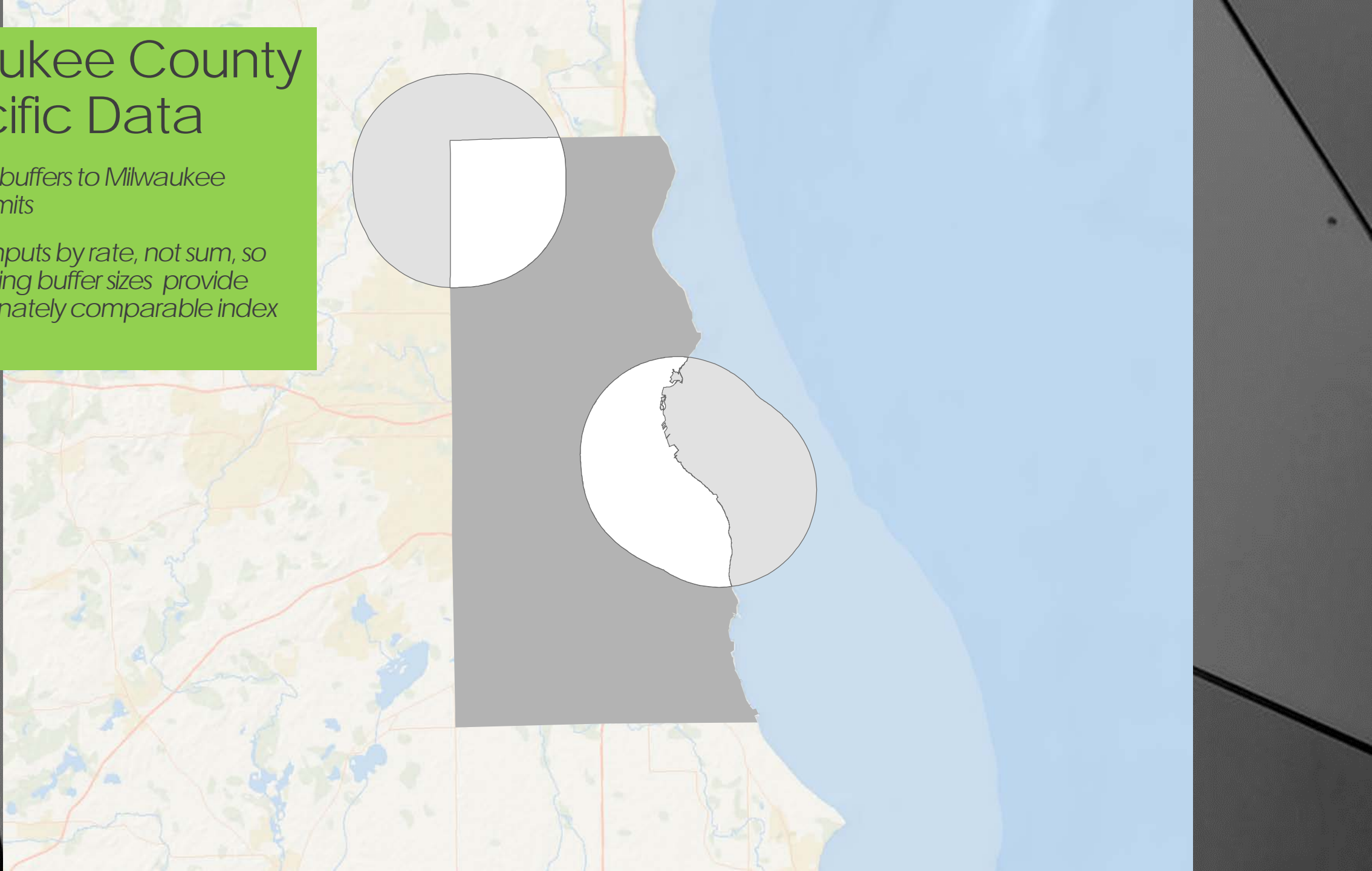


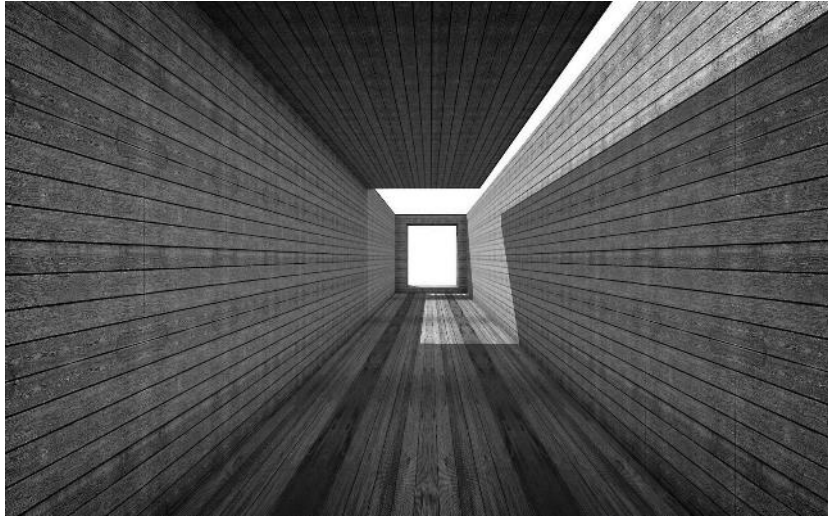
Buffer Overlays by Park Typology



Milwaukee County - Specific Data

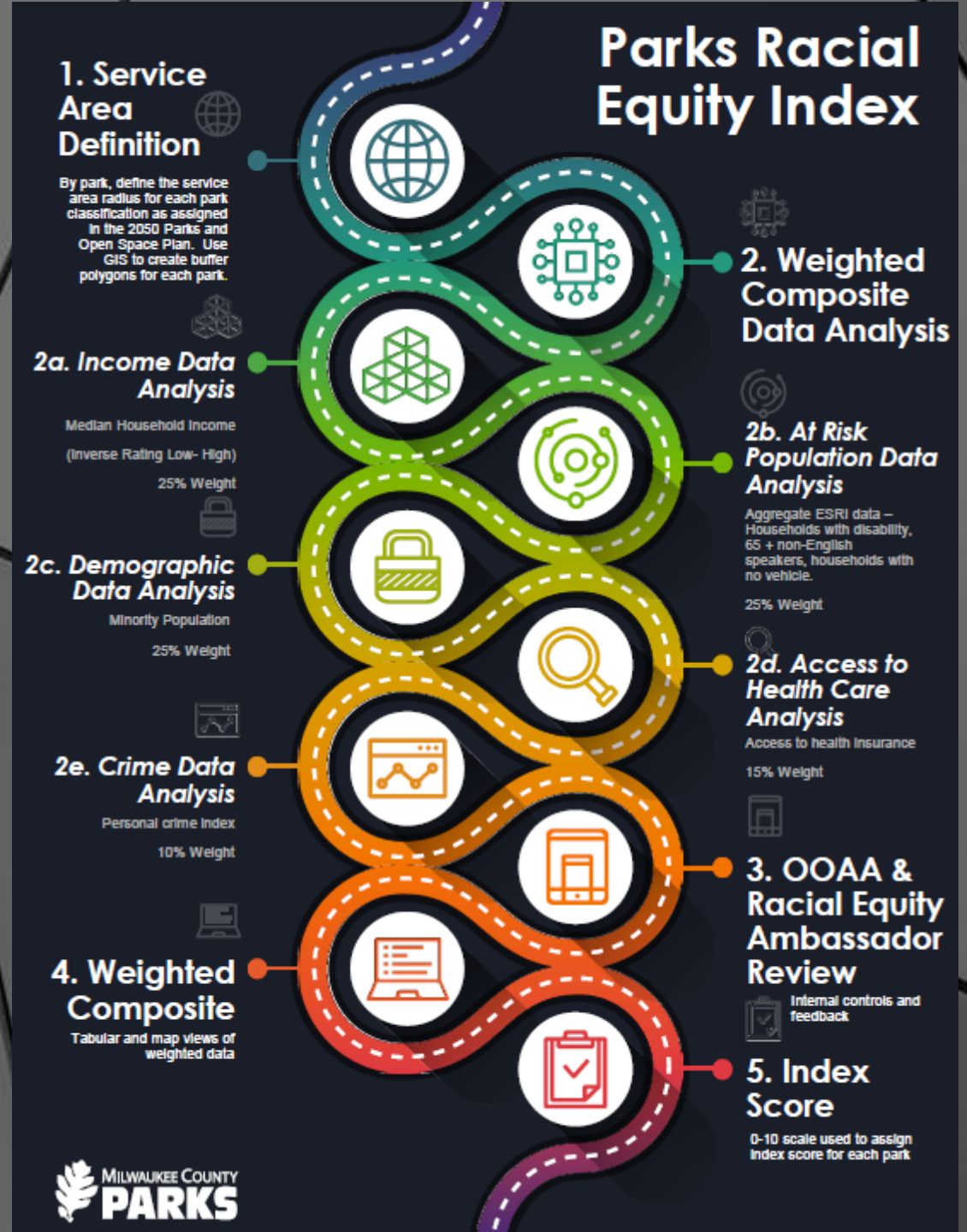
- *Clip park buffers to Milwaukee County limits*
- *All data inputs by rate, not sum, so that varying buffer sizes provide proportionately comparable index numbers*





2020 Project Approach

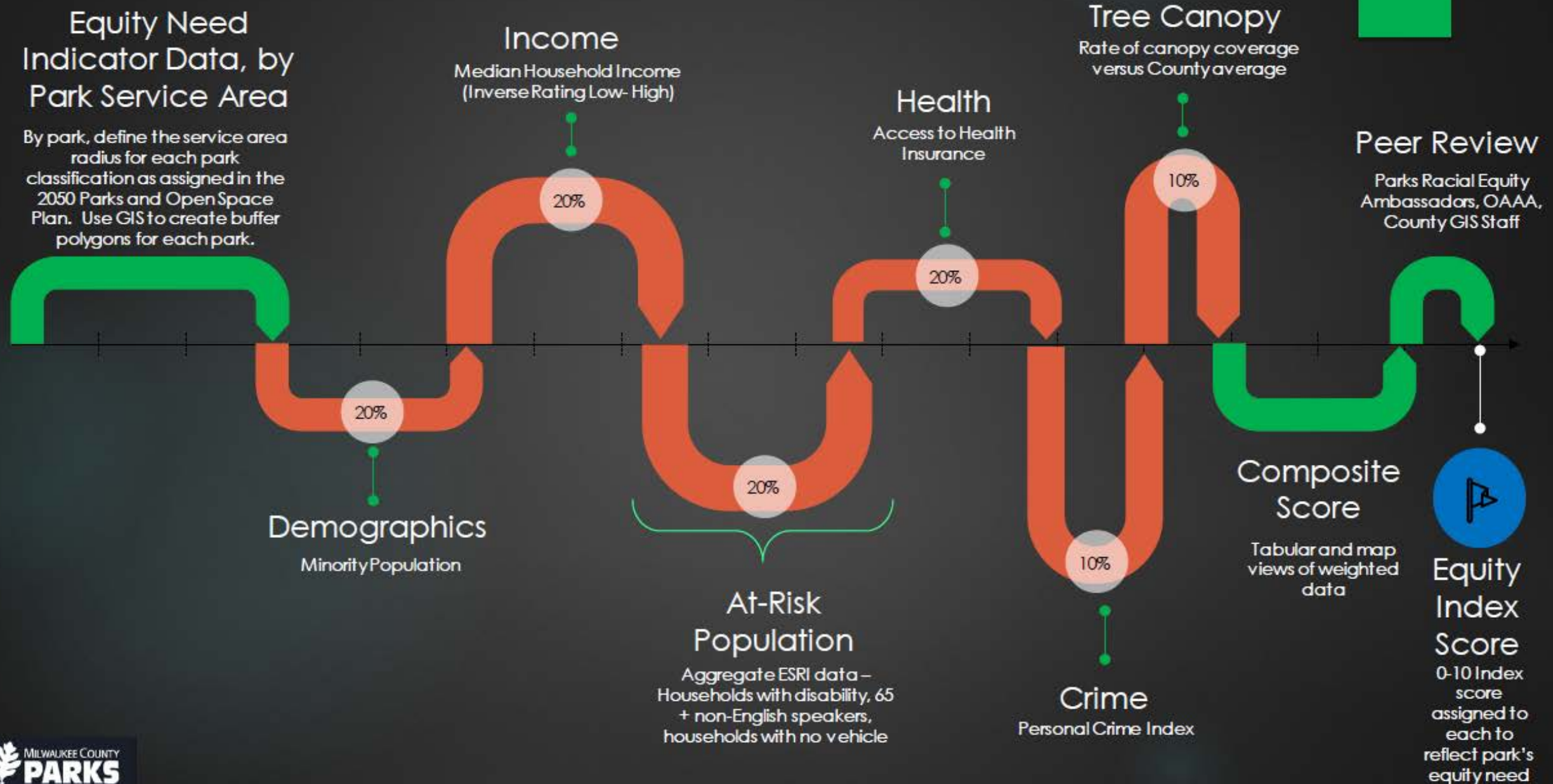
Use of GIS to spatially consider equity need across Milwaukee County, based on park locations and typology. Annual improvements and updates are planned.



Parks Equity Index - 2021

Equity Need Indicator Data, by Park Service Area

By park, define the service area radius for each park classification as assigned in the 2050 Parks and Open Space Plan. Use GIS to create buffer polygons for each park.



Centers for Disease Control (CDC) Social Vulnerability Index (SVI)

2020-2021 Data Categories

Health

Access to Health Insurance

Income

Median Household Income
(Inverse Rating Low- High)

At-Risk Population

Aggregate ESRI data –
Households with disability, 65
+ non-English speakers,
households with no vehicle

Demographics

Minority Population

Methods

Variables Used

American Community Survey (ACS), 2014-2018 (5-year) data for the following estimates:

Overall Vulnerability

Socioeconomic Status

Below Poverty

Unemployed

Income

No High School Diploma

Household Composition & Disability

Aged 65 or Older

Aged 17 or Younger

Older than Age 5 with a Disability

Single-Parent Households

Minority Status & Language

Minority

Speaks English "Less than Well"

Housing Type & Transportation

Multi-Unit Structures

Mobile Homes

Crowding

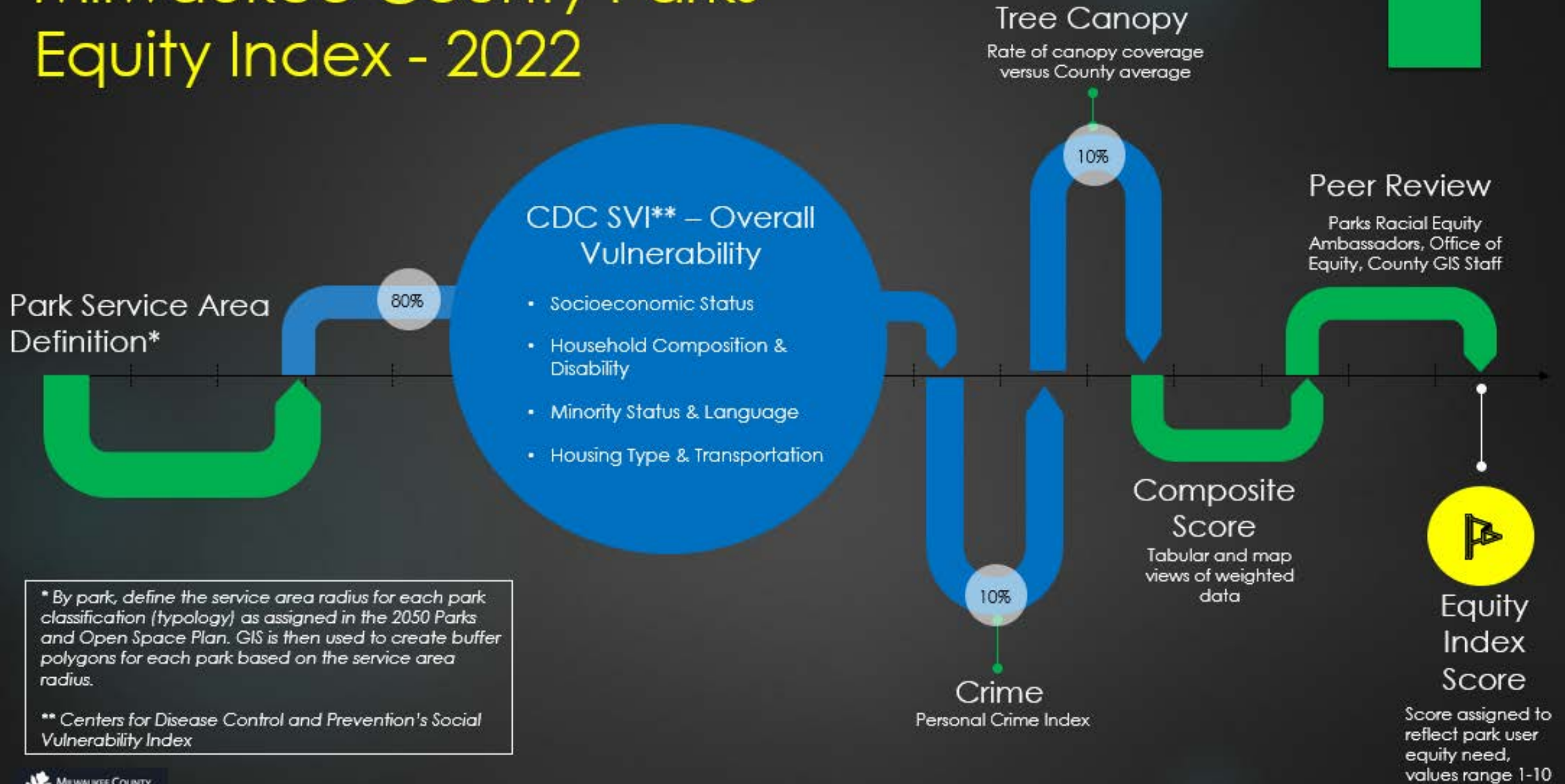
No Vehicle

Group Quarters

Centers for Disease Control (CDC) Social Vulnerability Index (SVI)

Population estimate, 2012-2016 ACS		
Population estimate MOE, 2012-2016 ACS	Percentage of civilian (age 16+) unemployed estimate MOE	
Housing units estimate, 2012-2016 ACS	Per capita income estimate, 2012-2016 ACS	
Housing units estimate MOE, 2012-2016 ACS	Per capita income estimate MOE, 2012-2016 ACS	
Households estimate, 2012-2016 ACS	Percentage of persons with no high school diploma (age 25+) estimate	
Households estimate MOE, 2012-2016 ACS	Percentage of persons with no high school diploma (25+) estimate MOE	
Persons below poverty estimate, 2012-2016 ACS	Percentage of persons aged 65 and older estimate, 2012-2016 ACS	
Persons below poverty estimate MOE, 2012-2016 ACS	Percentage of persons aged 65 and older estimate MOE, 2012-2016 ACS	
Civilian (age 16+) unemployed estimate, 2012-2016 ACS	Percentage of persons aged 17 and younger estimate, 2012-2016 ACS	
Civilian (age 16+) unemployed estimate MOE, 2012-2016 ACS	Percentage of persons aged 17 and younger estimate MOE, 2012-2016 ACS	
Per capita income estimate, 2012-2016 ACS.	Percentage of civilian noninstitutionalized population with a disability estimate, 2012-2016 ACS	Percentile percentage of persons (age 5+) who speak English "less than well" estimate
Per capita income estimate MOE, 2012-2016 ACS	Percentage of civilian noninstitutionalized population with a disability estimate MOE	Sum of series for Minority Status/Language theme
Persons (age 25+) with no high school diploma estimate, 2012-2016 ACS	Percentage of single parent households with children under 18 estimate, 2012-2016 ACS	Percentile ranking for Minority Status/Language theme
Persons (age 25+) with no high school diploma estimate MOE, 2012-2016 ACS	Percentage of single parent households with children under 18 estimate MOE, 2012-2016 ACS	Percentile percentage housing in structures with 10 or more units estimate
Persons aged 65 and older estimate, 2012-2016 ACS	Percentage minority (all persons except white, non-Hispanic) estimate, 2012-2016 ACS	Percentile percentage mobile homes estimate
Persons aged 65 and older estimate MOE, 2012-2016 ACS	Percentage minority (all persons except white, non-Hispanic) estimate MOE, 2012-2016 ACS	Percentile percentage households with more people than rooms estimate
Persons aged 17 and younger estimate, 2012-2016 ACS	Percentage of persons (age 5+) who speak English "less than well" estimate, 2012-2016 ACS	Percentile percentage households with no vehicle available estimate
Persons aged 17 and younger estimate MOE, 2012-2016 ACS	Percentage of persons (age 5+) who speak English "less than well" estimate MOE, 2012-2016 ACS	Percentile percentage of persons in institutionalized group quarters estimate
Civilian noninstitutionalized population with a disability estimate, 2012-2016 ACS	Percentage of housing in structures with 10 or more units estimate	Sum of series for Housing/Transportation theme
Civilian noninstitutionalized population with a disability estimate MOE, 2012-2016 ACS	Percentage of housing in structures with 10 or more units estimate MOE	Percentile ranking for Housing/Transportation theme
Single parent household with children under 18 estimate, 2012-2016 ACS	Percentage of mobile homes estimate	Sum of series themes
Single parent household with children under 18 estimate MOE, 2012-2016 ACS	Percentage of mobile homes estimate MOE	Flag - the percentage of persons in poverty is in the 90th percentile (1 = yes, 0 = no)
Minority (all persons except white, non-Hispanic) estimate, 2012-2016 ACS	Percentage of occupied housing units with more people than rooms estimate	Flag - the percentage of civilian unemployed is in the 90th percentile (1 = yes, 0 = no)
Minority (all persons except white, non-Hispanic) estimate MOE, 2012-2016 ACS	Percentage of occupied housing units with more people than rooms estimate MOE	Flag - per capita income is in the 90th percentile (1 = yes, 0 = no)
Persons (age 5+) who speak English "less than well" estimate, 2012-2016 ACS	Percentage of households with no vehicle available estimate	Flag - the percentage of persons with no high school diploma is in the 90th percentile (1 = yes, 0 = no)
Persons (age 5+) who speak English "less than well" estimate MOE, 2012-2016 ACS	Percentage of households with no vehicle available estimate MOE	Sum of flags for Socioeconomic Status theme
Housing in structures with 10 or more units estimate, 2012-2016 ACS	Percentage of persons in institutionalized group quarters estimate, 2012-2016 ACS	Flag - the percentage of persons aged 65 and older is in the 90th percentile (1 = yes, 0 = no)
Housing in structures with 10 or more units estimate MOE, 2012-2016 ACS	Percentage of persons in institutionalized group quarters estimate MOE, 2012-2016 ACS	Flag - the percentage of persons aged 17 and younger is in the 90th percentile (1 = yes, 0 = no)
Mobile homes estimate, 2012-2016 ACS	Percentile Percentage of persons below poverty estimate	Flag - the percentage of persons with a disability is in the 90th percentile (1 = yes, 0 = no)
Mobile homes estimate MOE, 2012-2016 ACS	Percentile Percentage of civilian (age 16+) unemployed estimate	Flag - the percentage of single parent households is in the 90th percentile (1 = yes, 0 = no)
At household level (occupied housing units), more people than rooms estimate, 2012-2016 ACS	Percentile per capita income estimate	Sum of flags for Household Composition theme
At household level (occupied housing units), more people than rooms estimate MOE, 2012-2016 ACS	Percentile Percentage of persons with no high school diploma (age 25+) estimate	Flag - the percentage of minority is in the 90th percentile (1 = yes, 0 = no)
Households with no vehicle available estimate, 2012-2016 ACS	Sum of series for Socioeconomic theme	Flag - the percentage those with limited English is in the 90th percentile (1 = yes, 0 = no)
Households with no vehicle available estimate MOE, 2012-2016 ACS	Percentile ranking for Socioeconomic theme summary	Sum of flags for Minority Status/Language theme
Persons in institutionalized group quarters estimate, 2012-2016 ACS	Percentile percentage of persons aged 65 and older estimate	Flag - the percentage of households in multi-unit housing is in the 90th percentile (1 = yes, 0 = no)
Persons in institutionalized group quarters estimate MOE, 2012-2016 ACS	Percentile percentage of persons aged 17 and younger estimate	Flag - the percentage of mobile homes is in the 90th percentile (1 = yes, 0 = no)
Percentage of persons below poverty estimate	Percentile percentage of civilian noninstitutionalized population with a disability estimate	Flag - the percentage of crowded households is in the 90th percentile (1 = yes, 0 = no)
Percentage of persons below poverty estimate MOE	Percentile percentage of single parent households with children under 18 estimate	Flag - the percentage of households with no vehicles is in the 90th percentile (1 = yes, 0 = no)
Percentage of civilian (age 16+) unemployed estimate	Sum of series for Household Composition theme	Flag - the percentage of persons in institutionalized group quarters is in the 90th percentile (1 = yes, 0 = no)
	Percentile ranking for Household Composition theme summary	Sum of flags for Housing/Transportation theme
	Percentile percentage minority (all persons except white, non-Hispanic) estimate	Sum of flags for the four themes
		Adjunct variable - Uninsured in the total civilian noninstitutionalized population estimate, 2012-2016 ACS
		Adjunct variable - Uninsured in the total civilian noninstitutionalized population estimate MOE, 2012-2016 ACS
		Adjunct variable - Percentage uninsured in the total civilian noninstitutionalized population estimate, 2012-2016 ACS
		Adjunct variable - Percentage uninsured in the total civilian noninstitutionalized population estimate MOE, 2012-2016 ACS
		Adjunct variable - Estimated daytime population, LandScan 2016

Milwaukee County Parks Equity Index - 2022



Equity Index Score - Higher Score = Higher Equity Need

Site	2022 Rank	2022 Equity Index Score (1-10)*	Final score	Canopy 2017				SVI - Overall percentile ranking				2021 Personal Crime Index				SiteID
				Value	Score	weight	Weighted score	Value	Score	weight	Weighted score	Value	Score	weight	Weighted score	
Moody Park	1	10	0.96	2	1.00	0.10	0.10	0.916132	0.95	0.80	0.76	842	1.00	0.10	0.10	701
Clarke Square Park	2	10	0.94	2	1.00	0.10	0.10	0.963926	1.00	0.80	0.80	306	0.36	0.10	0.04	761
Tiefenthaler Park	3	10	0.92	2	1.00	0.10	0.10	0.898158	0.93	0.80	0.74	641	0.76	0.10	0.08	792
Lucille Berrien Park	4	10	0.91	2	1.00	0.10	0.10	0.892778	0.92	0.80	0.74	636	0.75	0.10	0.08	696
Atkinson Triangle	5	10	0.90	2	1.00	0.10	0.10	0.865362	0.89	0.80	0.72	681	0.81	0.10	0.08	677
Johnsons Park	6	10	0.89	2	1.00	0.10	0.10	0.839611	0.87	0.80	0.69	786	0.93	0.10	0.09	771
Walker Square Park	7	9	0.86	2	1.00	0.10	0.10	0.876292	0.91	0.80	0.72	326	0.38	0.10	0.04	795
Pulaski Park	8	9	0.84	2	1.00	0.10	0.10	0.857532	0.89	0.80	0.71	258	0.30	0.10	0.03	633
Garden Homes Square	9	9	0.84	1	0.00	0.10	0.00	0.922103	0.96	0.80	0.76	608	0.72	0.10	0.07	688
Vogel Park	10	9	0.81	1	0.00	0.10	0.00	0.909102	0.94	0.80	0.75	515	0.61	0.10	0.06	710
Noyes Park	11	9	0.79	2	1.00	0.10	0.10	0.782904	0.81	0.80	0.64	381	0.45	0.10	0.04	703
Popuch Park	12	9	0.79	2	1.00	0.10	0.10	0.799974	0.82	0.80	0.66	252	0.29	0.10	0.03	705
Harriet Tubman Park	13	8	0.78	1	0.00	0.10	0.00	0.875297	0.91	0.80	0.72	507	0.60	0.10	0.06	711
Highland Park	14	8	0.78	2	1.00	0.10	0.10	0.753358	0.77	0.80	0.62	513	0.61	0.10	0.06	768
Sherman Park	15	8	0.78	2	1.00	0.10	0.10	0.744725	0.77	0.80	0.61	569	0.67	0.10	0.07	791
King Park	16	8	0.76	2	1.00	0.10	0.10	0.732765	0.75	0.80	0.60	526	0.62	0.10	0.06	773
Wyrick Park	17	8	0.75	1	0.00	0.10	0.00	0.861661	0.89	0.80	0.71	345	0.40	0.10	0.04	714
Lincoln Creek Parkway	18	8	0.73	1	0.00	0.10	0.00	0.815081	0.84	0.80	0.67	495	0.58	0.10	0.06	718
Schoenecker Park	19	8	0.73	1	0.00	0.10	0.00	0.805665	0.83	0.80	0.66	517	0.61	0.10	0.06	706
McGovern Park	20	8	0.72	1	0.00	0.10	0.00	0.799476	0.82	0.80	0.66	476	0.56	0.10	0.06	699
Carver Park	21	8	0.71	2	1.00	0.10	0.10	0.673404	0.69	0.80	0.55	533	0.63	0.10	0.06	757
Kosciuszko Park	22	7	0.70	2	1.00	0.10	0.10	0.696003	0.71	0.80	0.57	243	0.28	0.10	0.03	774
Lindsay Park	23	7	0.69	1	0.00	0.10	0.00	0.778803	0.80	0.80	0.64	389	0.46	0.10	0.05	697
Granville Dog Park	24	7	0.68	1	0.00	0.10	0.00	0.771666	0.79	0.80	0.64	382	0.45	0.10	0.04	655
Indigenous Peoples' Park	25	7	0.68	1	0.00	0.10	0.00	0.769324	0.79	0.80	0.63	377	0.44	0.10	0.04	681
Milwaukee Rotary Centennial Arboretum	26	7	0.67	2	1.00	0.10	0.10	0.638162	0.65	0.80	0.52	447	0.53	0.10	0.05	790
Beckum Park	27	7	0.67	2	1.00	0.10	0.10	0.644031	0.66	0.80	0.53	398	0.47	0.10	0.05	615

DATA SOURCES

CDC SVI Social Vulnerability Index:

Name 2018 Social Vulnerability Index (SVI).

Source Created by the Centers for Disease Control and Prevention (CDC) / Agency for Toxic Substances and Disease Registry (ATSDR) / Geospatial Research, Analysis, and Services Program (GRASP).

The Social Vulnerability Index (SVI) uses U.S. Census data to determine the social vulnerability of every county and tract. CDC SVI ranks each county and tract on 15 social factors, including poverty, lack of vehicle access, and crowded housing, and groups them into four related themes:

- Socioeconomic
- Housing Composition and Disability
- Minority Status and Language
- Housing and Transportation

Vintage 2018

Personal Crime:

Name 2021 Personal Crime Index (AGS)

Source 2021 Crime - The Personal Crime Index provides an assessment of the relative risk of four major crime types: murder, rape, robbery, and assault. It is modeled using data from the FBI Uniform Crime Report and demographic data from the Census and AGS.

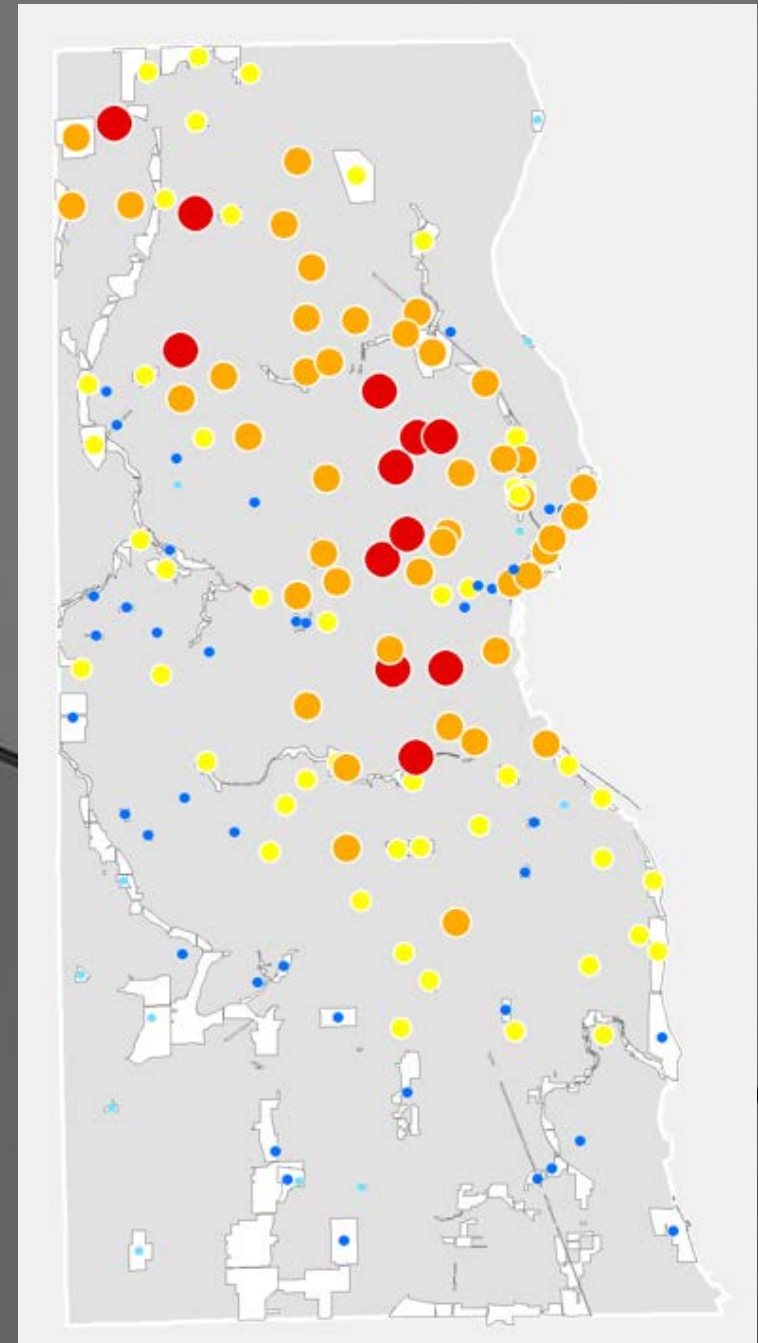
Vintage 2021

Tree Canopy:

Name Milwaukee County Tree Canopy

Source Erker, T., Townsend, P., & Buckler, D. (2019). Milwaukee County Land Classification, 2017. Wisconsin DNR. Retrieved from DNR Urban Forestry

Vintage 2017



2022 Planned Applications



Capital Project Planning

Used for both internal evaluation as well as submission to CIC



Major Maintenance Funding Allocations

Used for internal decision-making purposes to weigh options



Other Internal Uses

Possible workforce allocations, etc.



Project Proposal Requests

Used in matrix evaluation and scoring of third-party project proposals twice per year



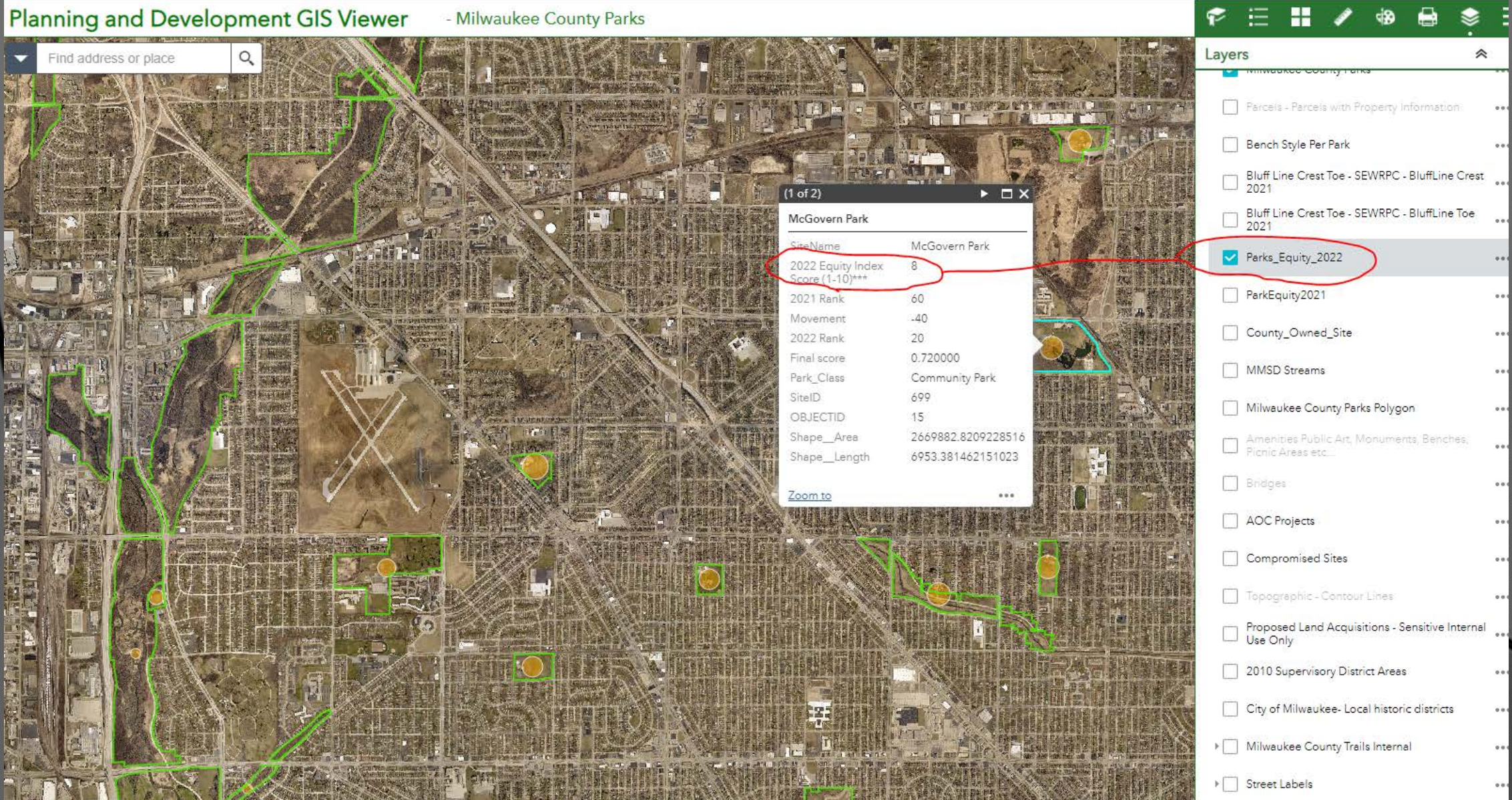
Land Utilization Requests

Used in matrix evaluation and scoring of third-party project proposals

Other Applications

Planning and Development GIS Viewer - Milwaukee County Parks

Find address or place



(1 of 2)

McGovern Park

SiteName	McGovern Park
2022 Equity Index Score (1-10)***	8
2021 Rank	60
Movement	-40
2022 Rank	20
Final score	0.720000
Park_Class	Community Park
SiteID	699
OBJECTID	15
Shape_Area	2669882.8209228516
Shape_Length	6953.381462151023

[Zoom to](#)

Layers

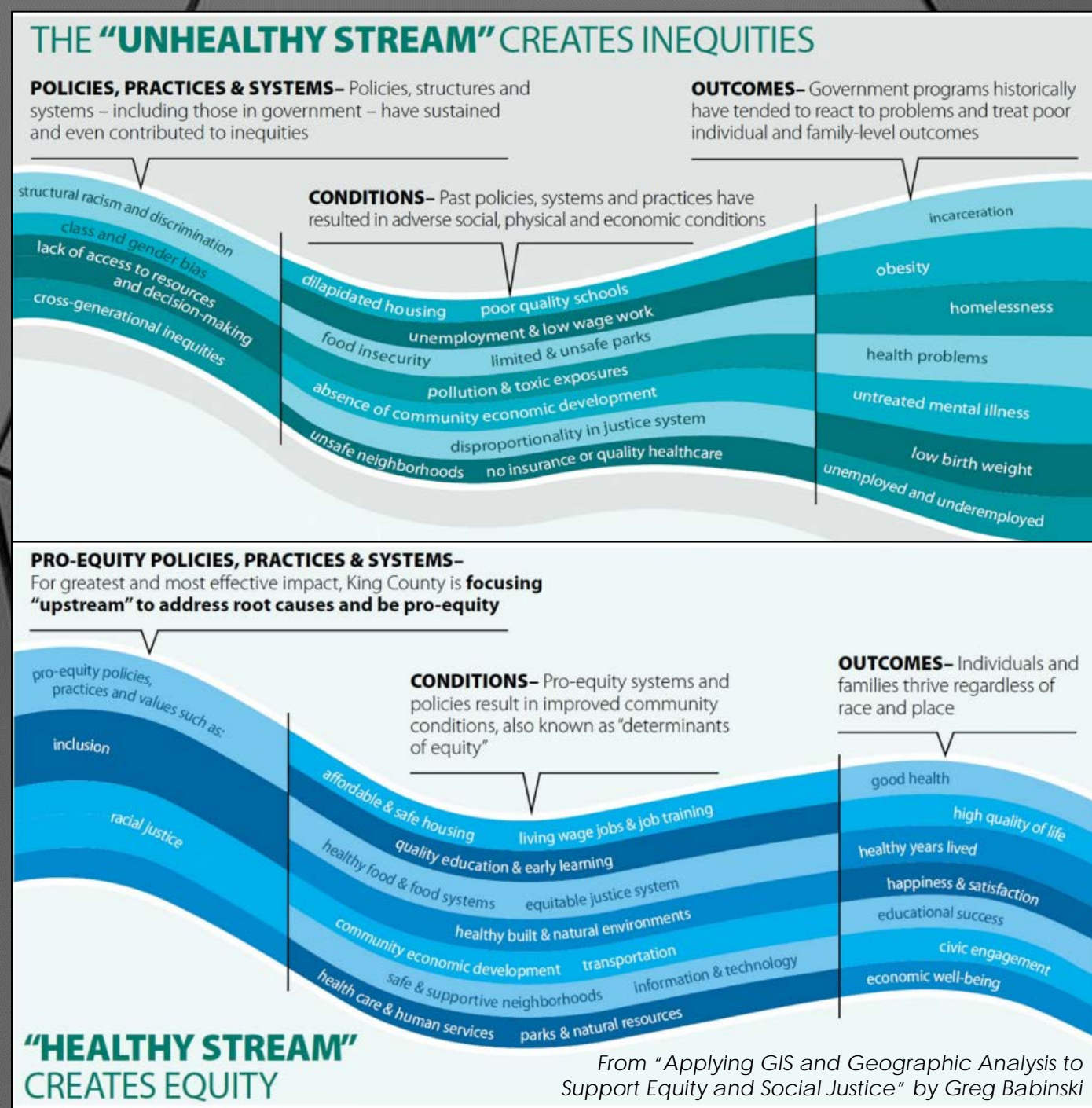
- ☐ Milwaukee County Parks
 - ☐ Parcels - Parcels with Property Information
 - ☐ Bench Style Per Park
 - ☐ Bluff Line Crest Toe - SEWRPC - BluffLine Crest 2021
 - ☐ Bluff Line Crest Toe - SEWRPC - BluffLine Toe 2021
 - ☒ Parks_Equity_2022
 - ☐ ParkEquity2021
- ☐ County_Owned_Site
- ☐ MMSD Streams
- ☐ Milwaukee County Parks Polygon
- ☐ Amenities Public Art, Monuments, Benches, Picnic Areas etc...
- ☐ Bridges
- ☐ AOC Projects
- ☐ Compromised Sites
- ☐ Topographic - Contour Lines
- ☐ Proposed Land Acquisitions - Sensitive Internal Use Only
- ☐ 2010 Supervisory District Areas
- ☐ City of Milwaukee- Local historic districts
- ☐ Milwaukee County Trails Internal
- ☐ Street Labels

Current Improvements

- ❖ Use of CDC SVI rather than individual datasets
- ❖ Updated annual personal crime index data (ESRI)
- ❖ Sub-Index by park typology (Filtering through Excel)

Future Possibilities

- ❖ Walkable distance evaluation (10-min)
- ❖ Evaluation of aquatic facilities as driving asset
- ❖ Improvements to health data
 - ❖ OEM EMS dashboard data
 - ❖ ESRI/GARE/Milwaukee County pilot project
 - ❖ Track advancement in PLACES and other health data for tract-level indicators
 - ❖ CDC PLACES Local Data for Better Health was evaluated as a part of this work, and while it has value for specific chronic illnesses, data is modeled, and therefore determined to not yet be accurate for average health metrics.
- ❖ Industry trends





Q&A

Please share your thoughts and
help us improve this tool!