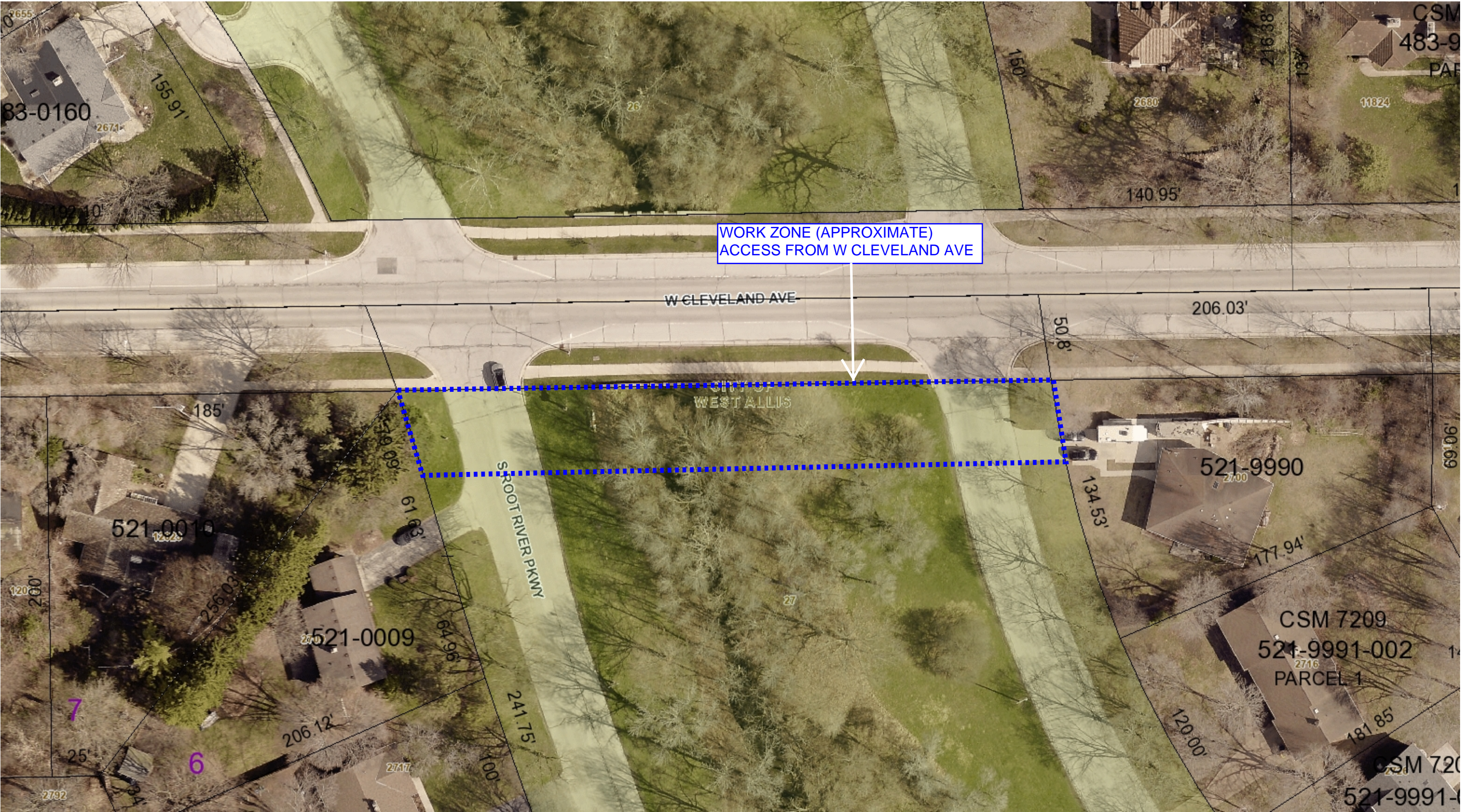




PROPOSED GAS MAIN--W CLEVELAND AVE AND ROOT RIVER PKWY



94 0 47 94 Feet  
NAD\_1983\_2011\_StatePlane\_Wisconsin\_South\_FIPS\_4803\_Ft\_US  
© MCAMLIS



1: 564

THIS MAP IS NOT TO BE USED FOR NAVIGATION

**DISCLAIMER:** This map is a user generated static output from the Milwaukee County Land Information Office Interactive Mapping Service website. The contents herein are for reference purposes only and may or may not be accurate, current or otherwise reliable. No liability is assumed for the data delineated herein either expressed or implied by Milwaukee County or its employees.

Notes