

Office of Emergency Management

Introduction





Office of Emergency Management

- Director's Office
- Radio Services Division
- 911 Communications Division
- Emergency Management Division
- Emergency Medical Services Division
- Offices:
 - 633 W. Wisconsin Ave.
 - 821 W. State St. (Safety Building)

VISION

By achieving racial equity,
Milwaukee is the healthiest
county in Wisconsin.

MISSION

Helping People in
Extraordinary Times.



Strategic Plan



Director's Office

- Director Cassandra Libal
 - Retired Police Captain (MPD)
 - Started with OEM April 2020
- Deputy Director Chris McGowan
 - Former Assistant Fire Chief (MMIA FD)
 - Started with OEM January 2021
- Executive Assistant Karmen Taylor-Jones



Radio Services Division

- Division Director VACANT
- OASIS Radio System
 - Milwaukee/Waukesha Partnership
 - FD/PD/EMS/DA/Fed/Etc.
 - 80* agencies, 6k radios, 21.7M PTT (2023)
 - Interoperability throughout County/ SE WI region
 - ISSI Gateway ensures the link btw all systems in the region
- Tech Support- 911 Communications
- 2 Radio Specialists, 1 Radio Coordinator





911 Communications Division

- Division Director Kinnyetta Patterson
- Primary 911 answering point for County
 - 7 of 11 dispatch centers
 - 100k transfers annually
- Dispatch function for MCSO
- EMS Communications Section (CDOs)
 - Primary link between EMS providers in the field and hospital
 - Alert special teams at emergency departments/hospitals
 - Coordinate Online Medical Control for EMS providers
 - CPR instruction over the phone
- 3 Dispatch Supervisors, 1 CDO Supervisor, 1 CDO Lead, 2 Coordinators (QA & Training), 16 FTE Dispatchers, 5 FTE CDOs, 9 Hourly CDOs, 5 Hourly Dispatchers



Emergency Management Division

- Division Director Paul Riegel
- Traditional Emergency Management role
 - County link to WI EM and FEMA
- Preparedness and Planning
 - Milwaukee County Emergency Plan (CEMP)
- Exercise Coordination
- Local Emergency Planning Committee (HazMat)
- Emergency Notification- Tornado Siren System & WEA
- 3 EM Coordinators, 1 Airport EM Coordinator, 1 GIS Lead, 1 GIS Coordinator



What qualifies as an emergency?



est. 2015

County Email Alerts

- Alerts are to notify of dangerous events or critical information
 - Severe weather closures
 - Shelter in place
 - Fire Alarm in Courthouse facility
- OEMAlertMessage@milwaukeecountywi.gov
- Send an email to OEM with clock #
- Text and phone can be added



OEM
Emergency Alerts

Emergency Procedures



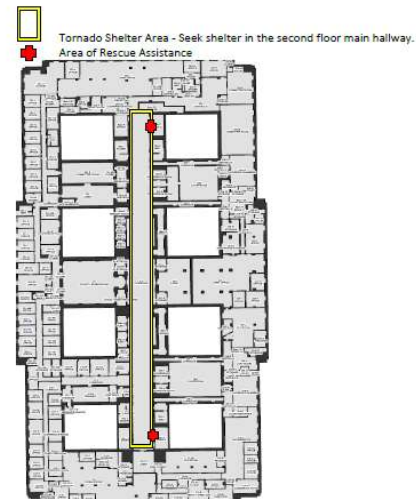
County Board of Supervisors, Courthouse – Room 201
 Emergency Action Plan, 04-10-2019
 Fire/Medical/Police: 9-9-1-1 (o), 9-1-1 (m)
 Building Security: 414-278-4788



Emergency Guidelines:

- Emergency alerts may be through the building PA (Public Address system), fire alarm horns and strobes, or outdoor warning sirens (tornado).
- Emergency notification text/email sign-up is available through OEM.
- Managers are responsible to ensure employees are familiar with emergency procedures.
- Team Leaders are assigned through Divisions or Floors and direct the emergency action herein, to include head counts during evacuation.
- Employees are responsible to report to their Team Leader during an incident or emergency.

- Severe weather watches and warnings will be issued by the National Weather Service. Tornado Sirens will be sounded by OEM during a Tornado Warning. Seek shelter in **main hallway on the second floor**. Close all doors behind you. Follow your Team Leader instructions. Wait for the "All Clear".
- If you see smoke or fire, pull fire alarm and dial 9-1-1. When horns and strobes are sounded, all occupants must evacuate, each and every time. Evacuate to the **Northwest corner of 10th and Highland** and report in to your Team Leader. Assist others. Those that cannot use the stairs will wait at Areas of Rescue Assistance.
- Dial 9-1-1 for a medical emergency. If an adult suddenly falls to the ground, is unresponsive, and not breathing, perform Hands-Only-CPR (cardiopulmonary resuscitation). Instruct someone to dial 9-1-1 and to grab the nearest AED (Automated External Defibrillator). Continue CPR and/or AED until paramedics arrive.
- A power outage may occur due to mechanical malfunction or severe weather. Emergency lighting may be available. Utilize flashlights and follow instructions. There may be a need to evacuate the area and/or close the building. Temporary relocation may apply, follow Supervisor instructions. Your COOP may apply.
- When a violent event occurs, but is not directed at you, do not interfere and immediately call 9-1-1. Move away from the threat and monitor it from a safe distance. **Follow ALICE training -Alert, Lockdown, Inform, Counter, Evacuate.** Follow instructions from first responders.
- If you suspect an active shooter, immediately dial 9-1-1. **Follow ALICE training -Alert, Lockdown, Inform, Counter, Evacuate.** If under attack, fight for your life, disrupt and/or incapacitate the shooter. Follow police orders & OEM alerts.
- If you receive a bomb threat, immediately have someone dial 9-1-1 and notify your supervisor. Keep the caller on the line as long as possible. **DO NOT HANG UP.** Write down or record as much information as possible. Follow police directions and notifications issued by OEM.
- If you see or receive a suspicious package, leave it where found and dial 9-1-1. Do not disturb or try to conduct any clean up. Keep the immediate area clear of others. Instruct people who've touched the package to wash hands with soap and water. Follow responder's instructions.
- When a hazardous materials spill occurs or is suspected, avoid any contact with the substance and avoid breathing in vapors. Dial 9-1-1. Alert people in the area to evacuate using **the furthest stairs on the floor, to the Northwest corner of 10th Street and Highland.** Turn off ignition sources if you can safely do so. Follow directions from emergency response and alerts from OEM.



Emergency Medical Services Division

- Division Director Dan Pojar
- Medical Director Dr. Ben Weston (MCW)
- Support municipal EMS throughout County
 - Medical Direction, Protocols
 - Quality Assurance, Data, Education
- Community-based EMS (CORE) Team- Special events
- 15 FTE Staff, 53 PT Staff, 3 Physicians (MCW), 1 Physician Assistant (MCW), 1 Fellows (MCW)





est. 2015

Questions?

