



# THE ABILITY CENTER

Play together.

## UNIVERSAL PARK PROJECT OVERVIEW

*“Play is a human need and therefore a human right.”*

*~ August Ball, Cream City Conservation*

# RampUp<sup>4</sup>

## Bradford Beach



**Mission** | to provide people *impacted* by disabilities with a *daily* opportunity to be fit, active, healthy, and to play.

**Vision** | to build communities where *all* abilities are provided a *universal opportunity* for health, wellness and recreation.

**Goals** | to provide a higher quality of life for people of *all* abilities by transforming greater Milwaukee into the most *universally inclusive* recreation destination in the world.

---

**THE ABILITY CENTER MISSION, VISION, GOALS**

**With disability on the rise in America (1 in 4, 26%, 61 million people)** and disability-associated health care expenditures accounting for 26.7% of all health care — the need for equitable, DAILY, and hourly access to programs and services that provide an outlet for those with disabilities to be well are vital to a sustainable economy, community, and healthcare system.

In **southeast Wisconsin 11.5% of our population, or approximately 247,000 people report a disability.**

- nearly **189,000 people in greater Milwaukee** (17,700 children)
- about **50% residing in Milwaukee County** alone (123,000 including 11,000 school-aged children).

**2 out of 7 families are impacted by disabilities** and seeking opportunities to play, TOGETHER.

---

**WHY THIS PROJECT MATTERS**

# Laying the Foundation

- ✓ Tree Survey
- ✓ Park Master Plan Developed
- ✓ Park Clubhouse Design
- ✓ Topographical Survey
- ✓ Site Grading Analysis
- ✓ Community Members Engaged
- ✓ Project Partners Onboarded





**GameTime**

## **PLAY Has No Limit ®**

### **WORK TO DATE:**

Developed the first project rendering

- Committed to building communities through play and recreation since 1929
- Wants to deliver TAC: Universal Park's across the country
- Engaged since 2019



**The plan for Wisconsin Avenue Park calls for a universally inclusive park: a play and recreation space for people of all ages and abilities.**

- Universal Playground
- America's first Universal Field
- Accessible Walking Trail
- Inclusive Play Pockets
- Accessible Fitness Stations
- Inclusive Challenge Course
- Community Gathering Space
- Accessible Clubhouse

**\* The Ability Center has invested \$30,000 to date.**





Hoppe Tree Service

## Tree Survey & Study

**WORK TO DATE:** Tagged, identified, & rated the health of every tree.

- Tree Study was the first task completed on the Universal Park Project.
- Neighborhood friends: Founded their company in Wauwatosa in 1972
- Freddy & August Hoppe grew up at Wisconsin Avenue Park, & it remains Freddy's neighborhood park to this day.







raSmith

# Multi-Disciplinary Engineering

## WORK TO DATE:

Developed Park Master Plan,  
Topographical Survey and Site Grading  
Analysis

- Civil engineering, landscape architecture and surveying firm
- Developed Bradford Beach plans
- From Root River Parkway to County Zoo
- From Summerfest to the VA







**Kahler Slater**

**Kahler Slater**

**Architect: We design to enrich  
life & achieve powerful results.**

**WORK TO DATE:**

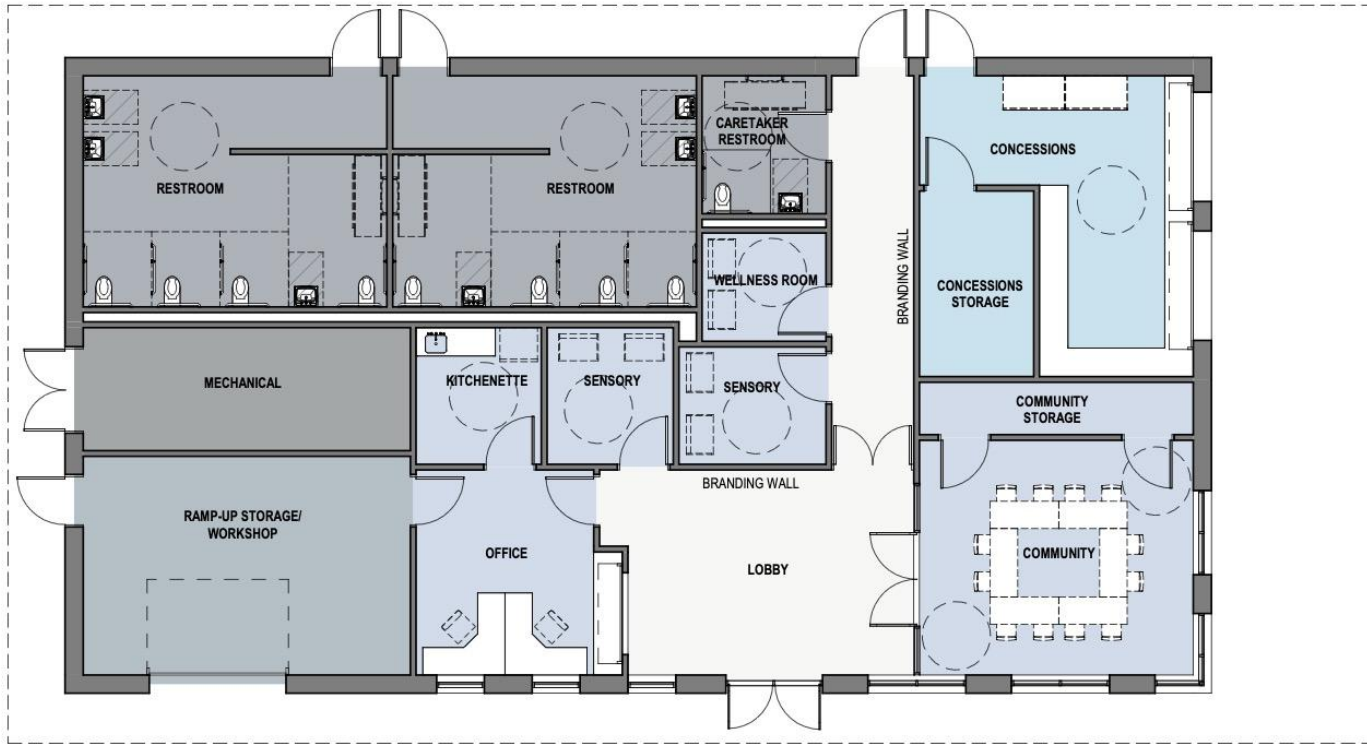
**Designed park clubhouse**

- Designed MPM's new project
- Village of Sussex Park Pavillion
- YMCA's
- & Numerous Universities





UNIVERSAL PARK: Clubhouse & Park Entry Rendering



① 1ST FLOOR PLAN  
1/8" = 1'-0"



YMCA of Metropolitan Milwaukee  
+  
Miracle League of Milwaukee



**A part of the lives of the greater Milwaukee areas kids and families since 1858.**

- \$500,000 Commitment
- Program partner for Universal Field



# OUR PARTNERS

By partnering with community-based nonprofits, industry leaders and parks and recreation professionals, we're able to create play opportunities:

- Where nobody is left on the sidelines
- Where universal inclusion & accessibility are a part of the natural landscape
- Where wheelchairs & mobility devices share equal access with tennis shoes
- Where the only stares are those of wonder and amazement



**Chris Prange-Morgan** Adaptive Athlete

**Mike Bonk** Director  
Milwaukee County Office for Persons with Disabilities

**Guy Smith** Executive Director  
Milwaukee County Parks

**Vera Westphal** Deputy Zoo Director  
Milwaukee County Zoo

**Jeff Wilkens**  
Clinic Director/Clinical Assistant Professor  
Marquette University Department of Physical Therapy

**Katie Helmeid** Occupational Therapist  
Assistive Technology Professional

**Bridget McNair** Research and Life Enrichment Director  
St. Camillus

**Deb Falk-Palec** Chairwoman  
Milwaukee County Office for Persons with Disabilities

**Jeremy Lucas** Director of Administration & Planning  
Milwaukee County Parks

**Jen Multerer-Smith** Recreational Therapist  
Rogers Memorial Hospital

**Kim DeChant** Clinic Coordinator, PT  
Marquette University Neuro Recovery Clinic

**Chelsea Budde** Executive Director  
Good Friend, Inc.

**Freddy Hoppe** Board Certified Master Arborist  
Hoppe Tree Service

**Margaret Chaidez** Project Manager  
Play Illinois Park & Playground

**Tom Mortensen**  
Site Planner/Landscape Architect, Project Manager  
raSmith

**David Mortensen** Project Manager, Civil Engineer  
raSmith

**Jessica Greb** Director of House Operations  
Ronald McDonald House Charities

**Elizabeth Poetsch** Former Wauwatosa Educator  
The Ability Center Volunteer

**Jim Hoefgen** League Director  
Tosa Baseball

**Barry Waddell** Executive Director  
The Park People

**Bridget Kesner** Director of Philanthropy  
Ronald McDonald House Charities

**Nick Putz** Marketing & Advertising  
Wangard Partners

**Leila Wright** Senior Executive Mission Advancement  
YMCA of Metropolitan Milwaukee

**Carrie Wall** CEO  
YMCA of Metropolitan Milwaukee

**Teddy Werner** Advisory Committee Chair  
Miracle League of Milwaukee



