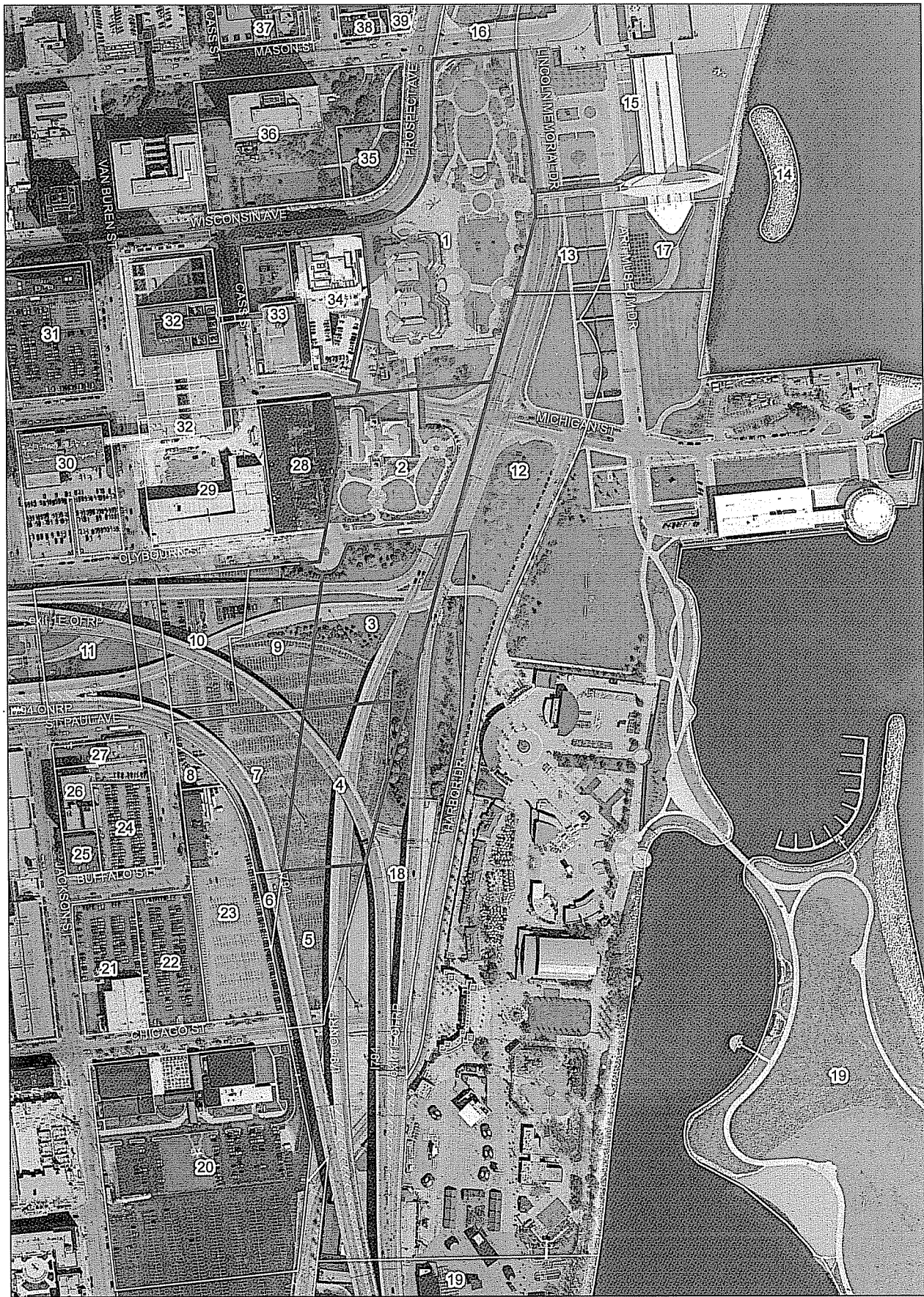


Appendix B

Maps of the Subject Properties



LONG RANGE LAKEFRONT PLANNING COMMITTEE (LRLPC) STUDY AREA PROPERTY OWNERSHIP

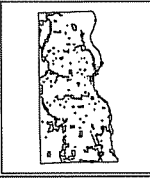


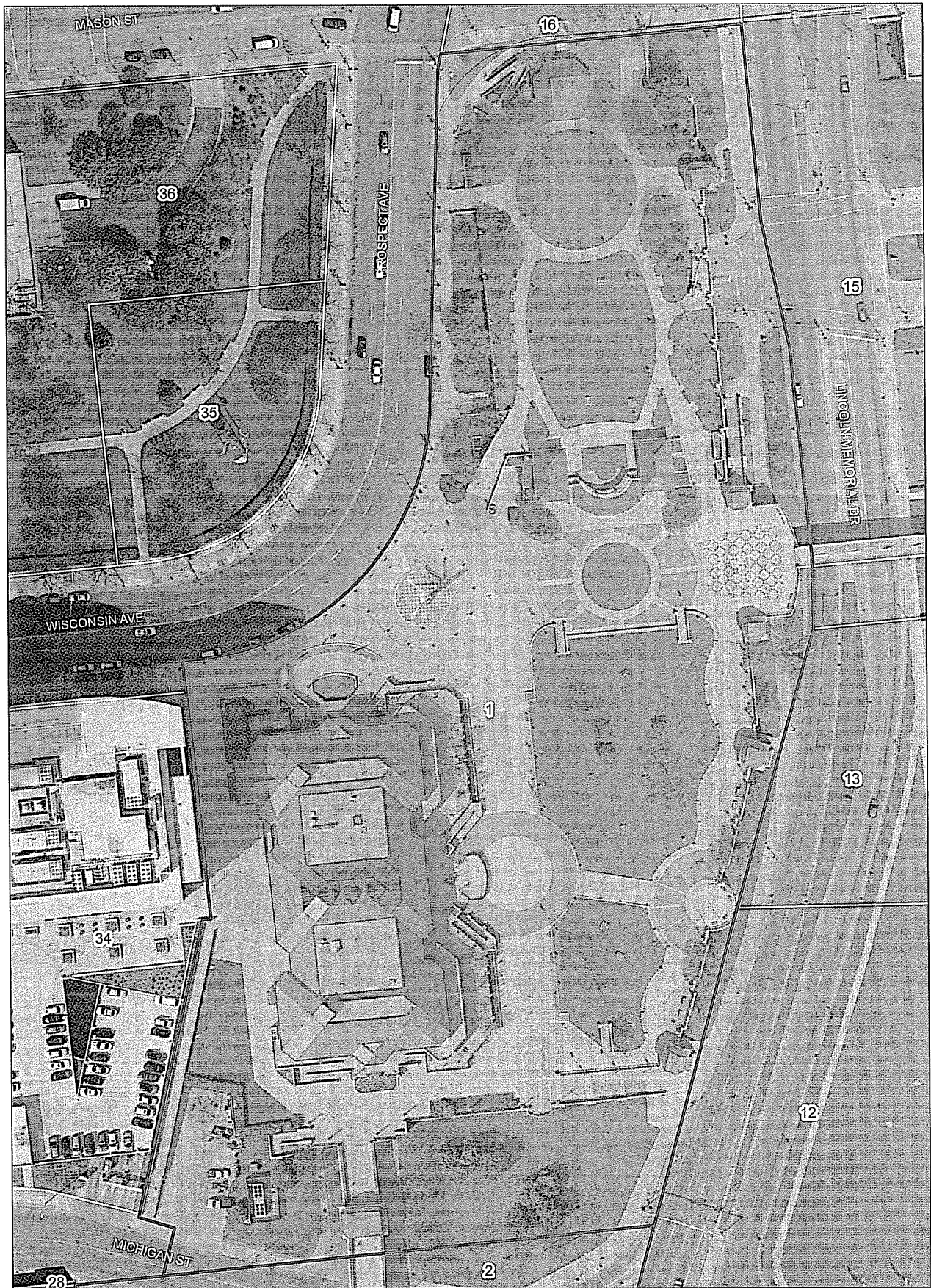
- 1 - Milwaukee County
- 2 - Milwaukee County
- 3 - Milwaukee County/WisDOT/FHWA
- 4 - Milwaukee County/WisDOT/FHWA
- 5 - Milwaukee County/WisDOT/FHWA
- 6 - Milwaukee County/WisDOT/FHWA
- 7 - Milwaukee County/WisDOT/FHWA
- 8 - Milwaukee County/WisDOT/FHWA
- 9 - Milwaukee County/WisDOT/FHWA
- 10 - Milwaukee County/WisDOT/FHWA
- 11 - Milwaukee County/WisDOT/FHWA

- 12 - Milwaukee County
- 13 - Milwaukee County
- 14 - Milwaukee County
- 15 - Milwaukee County
- 16 - Milwaukee County
- 17 - City of Milwaukee
- 18 - City of Milwaukee
- 19 - City of Milwaukee
- 20 - Italian Community Center Inc.
- 21 - W.W. Grainger Inc.
- 22 - Buffalo 633 LLC

- 23 - Kathleen D'Acquisto
- 24 - Damon Honagger
- 25 - Planned Parenthood of WI Inc.
- 26 - The Salvation Army
- 27 - Blount Assoc. Partnership
- 28 - US Bank
- 29 - US Bank
- 30 - Lewis Center LLC
- 31 - Northwestern Mutual Life
- 32 - US Bank
- 33 - US Bank

- 34 - 875 East Sponsor LLC
- 35 - Northwestern Mutual Life
- 36 - Northwestern Mutual Life
- 37 - Northwestern Mutual Life
- 38 - Bruce M. Peckerman
- 39 - The Cudahy Condominiums
- 40 - Cudahy Tower Apts. LLC





LONG RANGE LAKEFRONT PLANNING COMMITTEE (LRLPG) STUDY AREA - O'DONNELL PARK



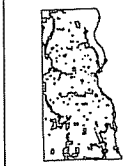
June 2011

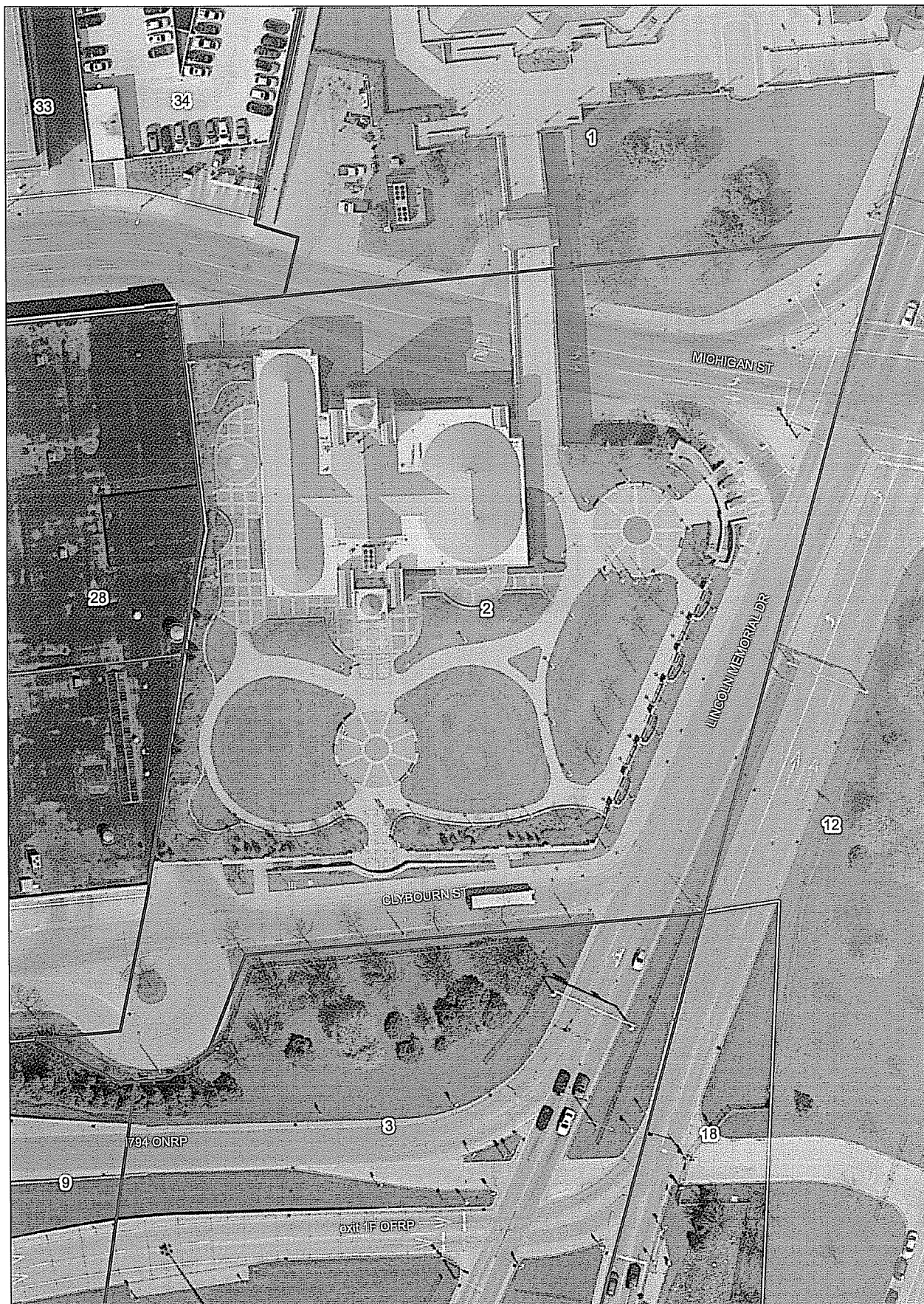
- 1 - Milwaukee County
- 2 - Milwaukee County
- 3 - Milwaukee County/WisDOT/FHWA
- 4 - Milwaukee County/WisDOT/FHWA
- 5 - Milwaukee County/WisDOT/FHWA
- 6 - Milwaukee County/WisDOT/FHWA
- 7 - Milwaukee County/WisDOT/FHWA
- 8 - Milwaukee County/WisDOT/FHWA
- 9 - Milwaukee County/WisDOT/FHWA
- 10 - Milwaukee County/WisDOT/FHWA
- 11 - Milwaukee County/WisDOT/FHWA

- 12 - Milwaukee County
- 13 - Milwaukee County
- 14 - Milwaukee County
- 15 - Milwaukee County
- 16 - Milwaukee County
- 17 - City of Milwaukee
- 18 - City of Milwaukee
- 19 - City of Milwaukee
- 20 - Italian Community Center Inc.
- 21 - W.W. Grainger Inc.
- 22 - Buffalo 633 LLC

- 23 - Kathleen D'Acquisto
- 24 - Damon Honegger
- 25 - Planned Parenthood of WI Inc.
- 26 - The Salvation Army
- 27 - Blount Assoc. Partnership
- 28 - US Bank
- 29 - US Bank
- 30 - Lewis Center LLC
- 31 - Northwestern Mutual Life
- 32 - US Bank
- 33 - US Bank

- 34 - 875 East Sponsor LLC
- 35 - Northwestern Mutual Life
- 36 - Northwestern Mutual Life
- 37 - Northwestern Mutual Life
- 38 - Bruce M. Pockerman
- 39 - The Cudahy Condominiums
- 40 - Cudahy Tower Apts. LLC





LONG RANGE LAKEFRONT PLANNING COMMITTEE (LRLPC) STUDY AREA - TRANSIT CENTER



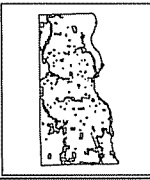
June 2011

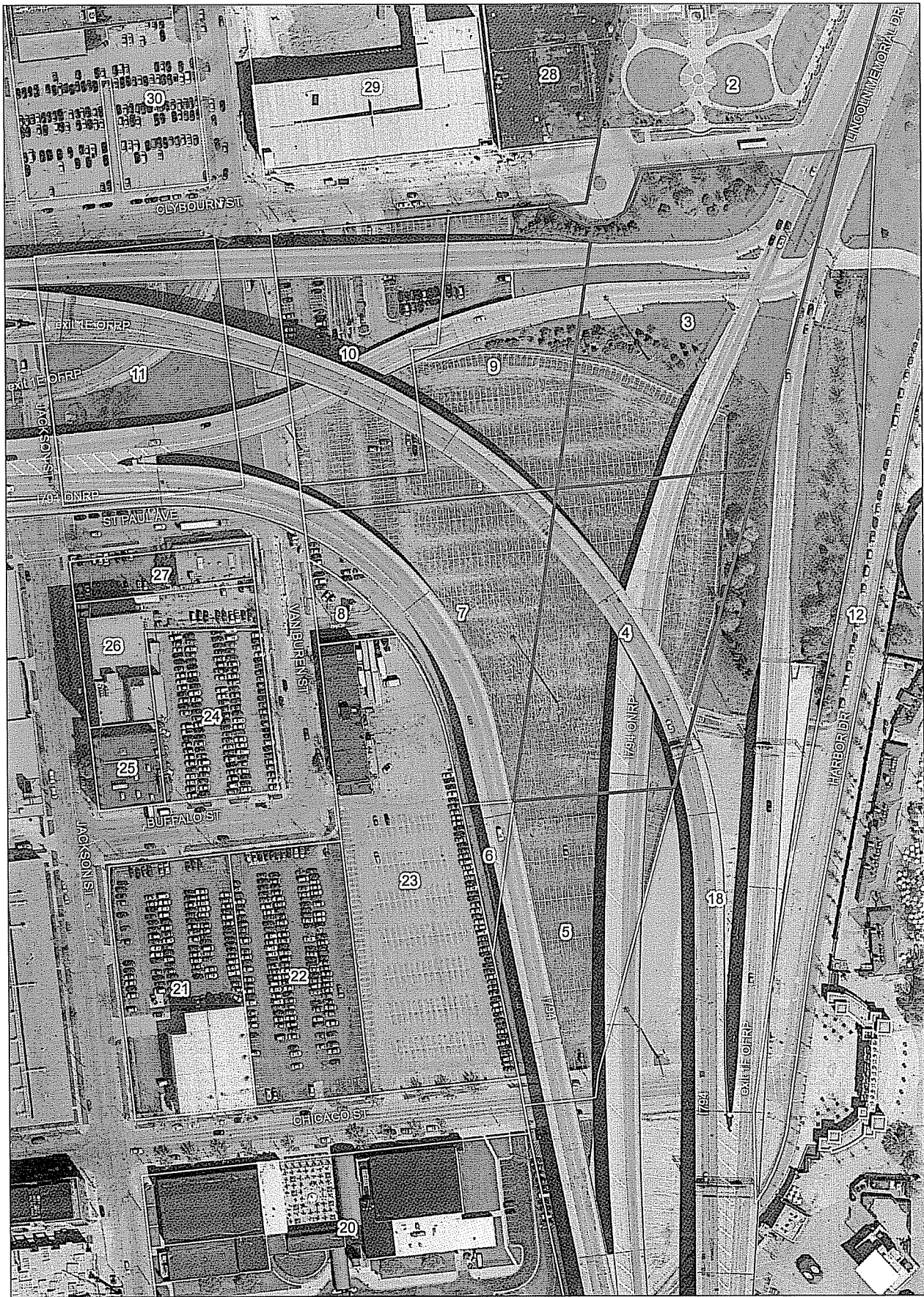
- 1 - Milwaukee County
- 2 - Milwaukee County
- 3 - Milwaukee County/WisDOT/FHWA
- 4 - Milwaukee County/WisDOT/FHWA
- 5 - Milwaukee County/WisDOT/FHWA
- 6 - Milwaukee County/WisDOT/FHWA
- 7 - Milwaukee County/WisDOT/FHWA
- 8 - Milwaukee County/WisDOT/FHWA
- 9 - Milwaukee County/WisDOT/FHWA
- 10 - Milwaukee County/WisDOT/FHWA
- 11 - Milwaukee County/WisDOT/FHWA

- 12 - Milwaukee County
- 13 - Milwaukee County
- 14 - Milwaukee County
- 15 - Milwaukee County
- 16 - Milwaukee County
- 17 - City of Milwaukee
- 18 - City of Milwaukee
- 19 - City of Milwaukee
- 20 - Italian Community Center Inc.
- 21 - W.W. Grainger Inc.
- 22 - Buffalo 633 LLC

- 23 - Kathleen D'Acquisto
- 24 - Damon Honegger
- 25 - Planned Parenthood of WI Inc.
- 26 - The Salvation Army
- 27 - Blount Assoc. Partnership
- 28 - US Bank
- 29 - US Bank
- 30 - Lewis Center LLC
- 31 - Northwestern Mutual Life
- 32 - US Bank
- 33 - US Bank

- 34 - 875 East Sponsor LLC
- 35 - Northwestern Mutual Life
- 36 - Northwestern Mutual Life
- 37 - Northwestern Mutual Life
- 38 - Bruce M. Peckerman
- 39 - The Cudahy Condominiums
- 40 - Cudahy Tower Apts. LLC





LONG RANGE LAKEFRONT PLANNING COMMITTEE (LRLPC) STUDY AREA - I 794 OVERPASS



June 2011

- 1 - Milwaukee County
- 2 - Milwaukee County
- 3 - Milwaukee County/WisDOT/FHWA
- 4 - Milwaukee County/WisDOT/FHWA
- 5 - Milwaukee County/WisDOT/FHWA
- 6 - Milwaukee County/WisDOT/FHWA
- 7 - Milwaukee County/WisDOT/FHWA
- 8 - Milwaukee County/WisDOT/FHWA
- 9 - Milwaukee County/WisDOT/FHWA
- 10 - Milwaukee County/WisDOT/FHWA
- 11 - Milwaukee County/WisDOT/FHWA

- 12 - Milwaukee County
- 13 - Milwaukee County
- 14 - Milwaukee County
- 15 - Milwaukee County
- 16 - Milwaukee County
- 17 - City of Milwaukee
- 18 - City of Milwaukee
- 19 - City of Milwaukee
- 20 - Italian Community Center Inc.
- 21 - W.W. Grainger Inc.
- 22 - Buffalo 633 LLC

- 23 - Kathleen D'Acquisto
- 24 - Damon Honegger
- 25 - Planned Parenthood of WI Inc.
- 26 - The Salvation Army
- 27 - Blount Assoc. Partnership
- 28 - US Bank
- 29 - US Bank
- 30 - Lewis Center LLC
- 31 - Northwestern Mutual Life
- 32 - US Bank
- 33 - US Bank

- 34 - 875 East Sponsor LLC
- 35 - Northwestern Mutual Life
- 36 - Northwestern Mutual Life
- 37 - Northwestern Mutual Life
- 38 - Bruce M. Peckerman
- 39 - The Cudahy Condominiums
- 40 - Cudahy Tower Apts. LLC

