



County of Milwaukee
Office of the Sheriff

David A. Clarke, Jr.
Sheriff

DATE: July 11, 2013

TO: Supervisor Theodore Lipscomb, Sr., 1st District
Chairman, Judiciary, Safety and General Services

FROM: Edward H. Bailey, Inspector, Milwaukee County Office of the Sheriff

SUBJECT: 13-589 From the Office of the Sheriff, providing an update on Airport Patrol (INFORMATIONAL ONLY)

BACKGROUND: The MCSO Airport Division provides both security assistance and is the primary law enforcement agency at General Mitchell International Airport. It has, in recent years, accomplishes this duty with an assigned force of 50 Deputy Sheriff 1 positions plus a 4-member K9 complement. The 2013 Adopted Budget funds 54 Deputy Sheriff positions, 6 Deputy Sheriff Sergeants, 1 Deputy Sheriff Lieutenant, 1 Deputy Captain and 1 Clerical Assistant. Total 2013 charges to the Airport Division are set at \$8,001,280; There is no property tax levy budgeted in the Airport Security program area as the operating cost of this program, less citation and grant revenue, is charged to the Airport. The Airport is currently staffed at a full complement of 54 Deputy Sheriffs; Included in this is a current K9 complement of 4. However, one of these K9s is set to retire in August, and in planning for this transition an additional TSA certified K9 will be on hand NLT 09/31/2013. Additionally, 2 Deputy Sheriff positions will shortly be lost to retirement, and must be replaced by deputies from elsewhere in the agency as their positions are abolished upon vacancy and replaced by correctional positions under an accelerated schedule implemented by the 2013 Budget.

STATUS: Airport / 2013 YTD

§ Last quarter, the MCSO reported 5 auto break-ins in remote lot B. This investigation encompassed criminal investigation; Video review and improvement recommendation to GMIA; additional staffing; and education in the form of flyer and signage in the shuttle buses and shelters, stairwells, on the ticketing issuing machines which are located at the entrances to all parking lots and various areas throughout the parking structure. To date, we have only experienced one more event of this type, on April 1, when an additional 4 autos were damaged. Since April 1 there have been no further incidents of this type. In regards to very

Service to the Community Since 1835

821 West State Street • Milwaukee, Wisconsin 53233-1488
414-278-4766 • <http://www.mksheriff.org>

specific video camera recommendations made to GMIA personnel, on May 17 a response letter from Louis Traverzo, Federal Security Director of the DHS/TSA at GMIA indicated their willingness to search TSA grant opportunities to increase this capacity, as well as outlining additional other “target hardening” improvements to wit:

Since 2004, the TSA has been working with the airport in a joint effort to upgrade the camera system. AFSD/LE Ed Rooney has been working with the airport to obtain grant monies from TSA Headquarters. . Fortunately we are projected to receive funding for a CCTV project in the terminal building in FY2014 (or possibly yet this year.)

The airport had a design study with cost estimates done for a camera system that would probably exceed even your recommendations...

...The airport recently completed a new fencing system around the airport. Given the availability of funds, I believe that it is more prudent to spend out money on hardening the terminal buildings first, and as funds become available in the future we can work our way out to the perimeter.”

In a subsequent May response from C. Barry Bateman, Airport Director, he confirmed potential upgrades to wit:

“The parking structure at (GMIA) has been modified to comply with (DHS) and (TSA) regulations. The parking structure CCTV system, however, was undergoing a software modification to further improve recording capabilities at he time of the vehicle break-INS. The software and recording hardware modifications have been completed and the CCTV system is now operational. We intend to provide for additional CCTV surveillance in our parking facilities when funding becomes available...Fortunately due to the security measures already undertaken by the Sheriff’s Airport Bureau and Airport Division personnel, vehicle break-ins and vandalism are held to a very minimal level at GMIA”

§ In December 2012, the Division began investigation of a theft of monies from an Airport vendor office. This case has been referred to MCSO CID and the suspect identified who has left this jurisdiction is currently residing in Turkey. An arrest warrant has been issued.

| Category | 2013 YTD | 2012 YTD | % Change (-) |
|---------------------------|-----------------|-----------------|---------------------|
| Assaults | 1 | 3 | (67) |
| Robbery / Fraud | 14 | 26 | (48) |
| Narcotics | 8 | 22 | (65) |
| Disorderly Conduct | 3 | 23 | (87) |
| Airport Arrests* | 105 | 111 | (5) |
| Alerts (Aircraft/Medical) | 160 | 210 | (24) |
| Vehicle B/E | 7 | 3 | 200 |

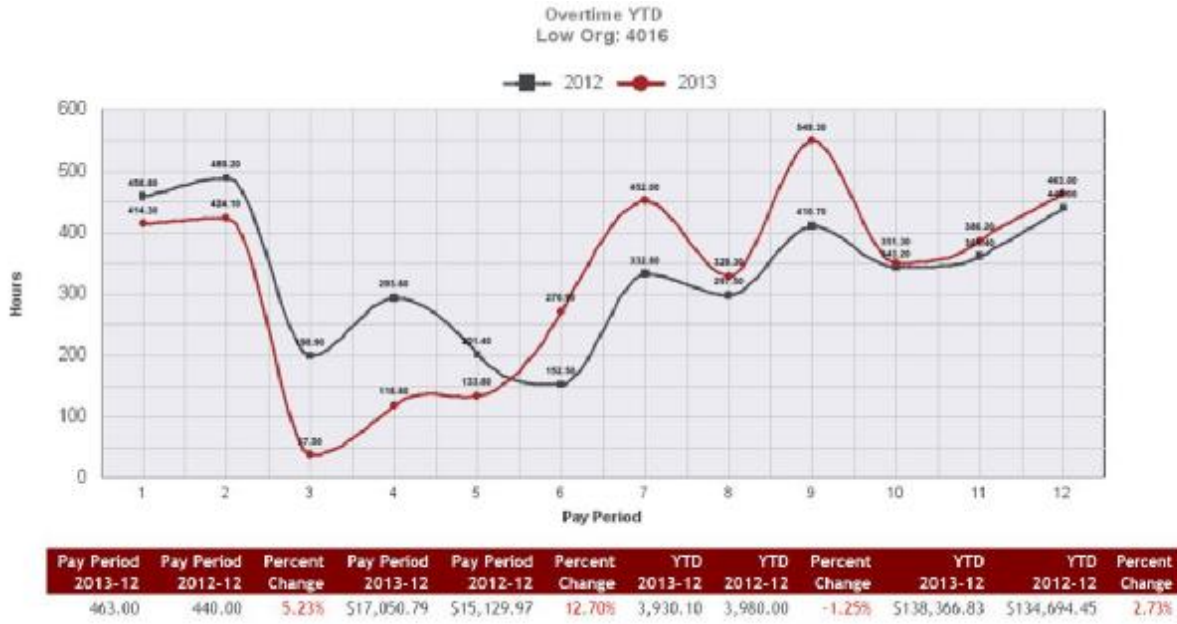
Service to the Community Since 1835

| Category | 2013 YTD | 2012 YTD | % Change (-) |
|-------------|----------|----------|--------------|
| OT | 3,930 | 3,980 | (1) |
| (\$138,366) | | | |

* Domestic Abuse, Battery, Disorderly Conduct, OWI

DC: Drunken threat to blow up plane accompanied by obscenity
 Threat to TSA employee
 Drunken argument on aircraft accompanied by obscenity

| | 6/24/2013 TO 6/30/2013 | 6/17/2013 TO 6/23/2013 | % Change | 6/17/2013 TO 6/23/2013 | 6/10/2013 TO 6/16/2013 | % Change | YTD 2013 | YTD 2012 | % Change | YTD 2013 | YTD 2011 | % Change |
|---------------------|------------------------|------------------------|----------|------------------------|------------------------|----------|----------|----------|----------|----------|----------|----------|
| Criminal | | | | | | | | | | | | |
| Assault | 0 | 0 | 0% | 0 | 0 | 0% | 1 | 3 | -57% | 1 | 5 | -80% |
| Theft/Robbery/Fraud | 1 | 1 | 0% | 1 | 0 | 0% | 14 | 26 | -46% | 14 | 15 | -7% |
| Criminal Damage | 0 | 0 | 0% | 0 | 0 | 0% | 7 | 3 | 133% | 7 | 12 | -42% |
| Death Investigation | 0 | 0 | 0% | 0 | 0 | 0% | 1 | 1 | 0% | 1 | 0 | 0% |
| Narcotics | 0 | 0 | 0% | 0 | 0 | 0% | 2 | 22 | -64% | 8 | 16 | -50% |
| Weapons | 0 | 0 | 0% | 0 | 1 | -100% | 8 | 15 | -47% | 8 | 10 | -20% |
| *TOTAL Criminal | 1 | 1 | 0% | 1 | 1 | 0% | 39 | 70 | -44% | 39 | 58 | -33% |



Area Complaints
 Airport Division
 2013/01/01 to 2013/06/30 vs. 2012/01/01 to 2012/06/30

| CATEGORY | Total | Closed | Sustained | Total | Closed | Sustained |
|----------------------------------|----------|----------|-----------|----------|----------|-----------|
| | YTD 2013 | YTD 2013 | YTD 2013 | YTD 2012 | YTD 2012 | YTD 2012 |
| Customers Satisfaction Complaint | 0 | 0 | 0 | 1 | 1 | 0 |
| Notice of Claim | 1 | 0 | 0 | 1 | 0 | 0 |
| Rules Violation/Civil Service | 4 | 2 | 2 | 4 | 4 | 3 |
| TOTAL | 5 | 2 | 2 | 6 | 5 | 3 |

Service to the Community Since 1835

821 West State Street • Milwaukee, Wisconsin 53233-1488
 414-278-4766 • <http://www.mksheriff.org>

Labor Costs = 42% of 2013 Budget as of 07/01/2013

| 4016 - AIRPORT SECURITY - 2013-2011 | | | | | |
|--|--------------------------------|--------------------------|--------------------------|--------------------------|--------------------------|
| ACCOUNT NBR | ACCOUNT NAME | 2013 BUDGET AMOUNT | 2013 ACTUAL AMOUNT | 2012 ACTUAL AMOUNT | 2011 ACTUAL AMOUNT |
| 5001 | DIRECT LABOR CHARGED | | \$ 1,308,903 | \$ 2,571,043 | \$ 2,587,834 |
| 5002 | OFFTIME CHARGED | | \$ 253,142 | \$ 497,240 | \$ 500,487 |
| 5003 | FRINGE BENEFITS CHARGED | | \$ 1,448,093 | \$ 2,846,090 | \$ 2,876,192 |
| 5051 | DIRECT LABOR APPLIED | | \$ (1,529,552) | \$ (2,855,031) | \$ (2,811,990) |
| 5052 | OFFTIME APPLIED | | \$ (295,815) | \$ (552,163) | \$ (543,839) |
| 5053 | FRINGE BENEFITS APPLIED | | \$ (1,700,941) | \$ (3,172,939) | \$ (3,127,339) |
| 5189 | DIRECT LABOR TRN OUT | | \$ - | \$ - | \$ (231) |
| 5190 | DIRECT LABOR TRANSFER IN | | \$ - | \$ (16,938) | \$ 41,269 |
| 5199 | SALARIES-WAGES BUDGET | \$ 3,715,115 | \$ 1,705,785 | \$ 3,196,861 | \$ 3,264,250 |
| 5201 | OVERTIME | \$ 382,272 | \$ 297,312 | \$ 566,519 | \$ 413,728 |
| 5312 | SOCIAL SECURITY TAXES | \$ 314,166 | \$ 144,910 | \$ 279,799 | \$ 276,651 |
| 5318 | UNEMPLOYMENT COMPENSATION | \$ - | \$ - | \$ 13,068 | \$ 959 |
| 5321 | UNIFORM ALLOWANCE | \$ 24,225 | \$ - | \$ (1,615) | \$ 26,385 |
| 5322 | EDUCATIONAL BONUS | \$ 15,650 | \$ - | \$ 16,975 | \$ 17,325 |
| 5325 | LONGEVITY PAY | \$ 8,020 | \$ - | \$ 15,528 | \$ 15,024 |
| 5390 | FRINGE BENEFIT TRANSFER-DIRECT | \$ - | \$ - | \$ (5,840) | \$ 3,139 |
| 5402 | FRINGE BENEFIT-PENSION ADJUST | \$ 33,182 | \$ - | \$ 25,844 | \$ 43,692 |
| 5420 | EMPLOYEE HEALTH CARE | \$ 822,846 | \$ 372,988 | \$ 671,413 | \$ 871,048 |
| 5421 | EMPLOYEE PENSION | \$ 597,407 | \$ 287,661 | \$ 430,670 | \$ 648,181 |
| 5422 | LEGACY HEALTHCARE | \$ 820,698 | \$ 437,752 | \$ 816,433 | \$ 739,619 |
| 5423 | LEGACY PENSION | \$ 426,347 | \$ 271,250 | \$ 469,021 | \$ 368,990 |
| 5490 | FRINGE BENEFIT TRFR-IND IN | | \$ - | \$ 53,649 | \$ 243,187 |
| 5495 | PERS SERV INDIRECT ABATEMENT' | \$ - | \$ (18) | \$ (6) | \$ (25) |
| | PERSONAL SERVICES | \$ 7,159,928 | \$ 3,001,469 | \$ 5,865,622 | \$ 6,454,537 |

| 4018 - K-9 PATROL - 2013-2011 | | | | | |
|--------------------------------------|-------------------|--------------------------|--------------------------|--------------------------|--------------------------|
| ACCOUNT NBR | ACCOUNT NAME | 2013 BUDGET AMOUNT | 2013 ACTUAL AMOUNT | 2012 ACTUAL AMOUNT | 2011 ACTUAL AMOUNT |
| | PERSONAL SERVICES | \$ 494,583 | \$ 266,400 | \$ 528,262 | \$ 541,338 |

S:// Edward H. Bailey, I7

Edward H. Bailey, Inspector, Milwaukee County Office of the Sheriff

Service to the Community Since 1835

821 West State Street • Milwaukee, Wisconsin 53233-1488

414-278-4766 • <http://www.mksheriff.org>