



Greendale – Dale Creek and Grootemaat Woods land swap

March 2025



Request:

From the Executive Director of Milwaukee County Parks, requesting authorization to swap sections of Dale Creek for Grootemaat Woods between Milwaukee County Parks and the Village of Greendale

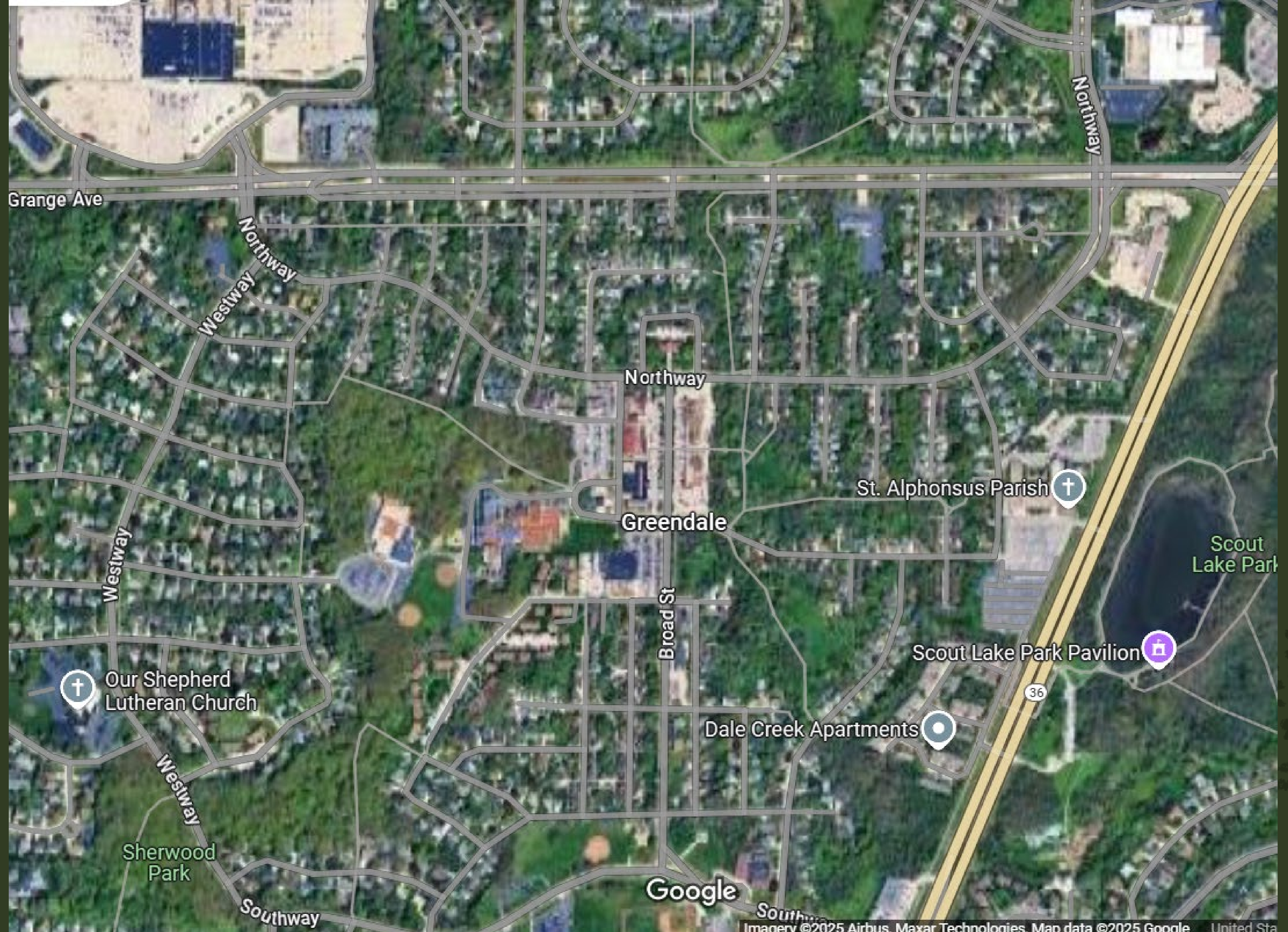


Greendale - Dale Creek

- Dale Creek is a creek and adjacent parkway that runs through the heart of the Village of Greendale
- It contains a creek, open recreational spaces, a playground, children's garden and natural areas
- Since 1995 the Village of Greendale has managed, maintained and improved the Dale Creek park property under a Lease Agreement
- This Agreement produced operational challenges for Parks

Greendale - Dale Creek

- The 30-year Lease Agreement between County and Village has expired and the parties would like to discuss the opportunity for the Village to obtain the park
- Dale Creek has great importance to the Greendale community
- Greendale wants to make improvements to it
- Transferring the property would reduce the operations burdens of County Parks



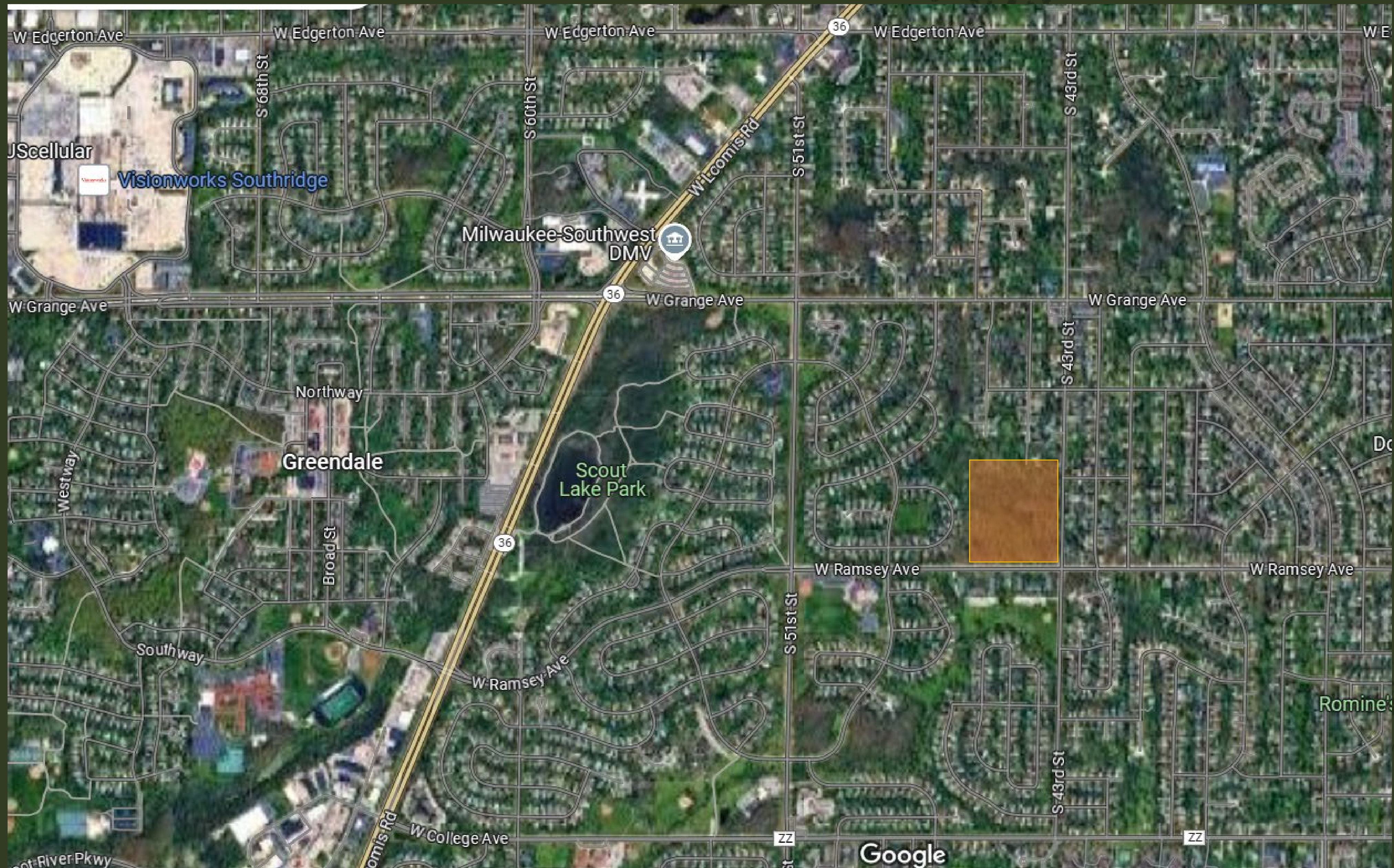






Grootemaat Woods

- Grootemaat Woods is a 13.75 acre natural area at the intersection of S. 43rd St and W. Ramsey Ave in Greendale
- It is currently owned by the Village
- Entirely wooded with walking trails





Terms:

Quit Claim Deeds to be recorded by each party

Restrictive Covenants to be recorded with each deed

Land must remain a Park, no commercial development



Question?