

GENERAL MITCHELL INTERNATIONAL AIRPORT
TERMINAL BUILDING - GATE LEVEL

D1
86 s.f.

D2
558 s.f.

CONCOURSE D

PROPOSED LOCATION:
HUDSON GROUP RETAIL

PROPOSED LOCATION:

HUDSON GROUP RETAIL

C1
552 s.f.

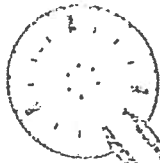
C2
582 s.f.

C3
1,072 s.f.

CONCOURSE D

D3
1,181 s.f.

M1
359 s.f.



SPECIALTY RETAIL LOCATIONS
Exhibit A



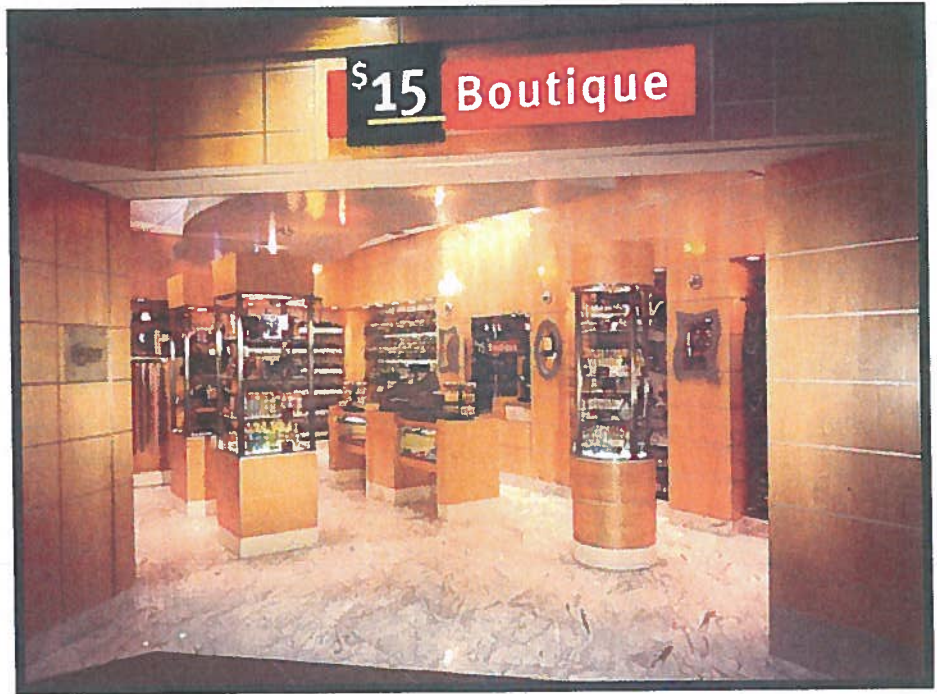
1 inch = 200 feet

HUDSON GROUP RETAIL, LLC - AFFORDABLE LUXURIES

Q14 | SPECIALTY RETAIL CONCESSIONS AT
GENERAL MITCHELL INT'L



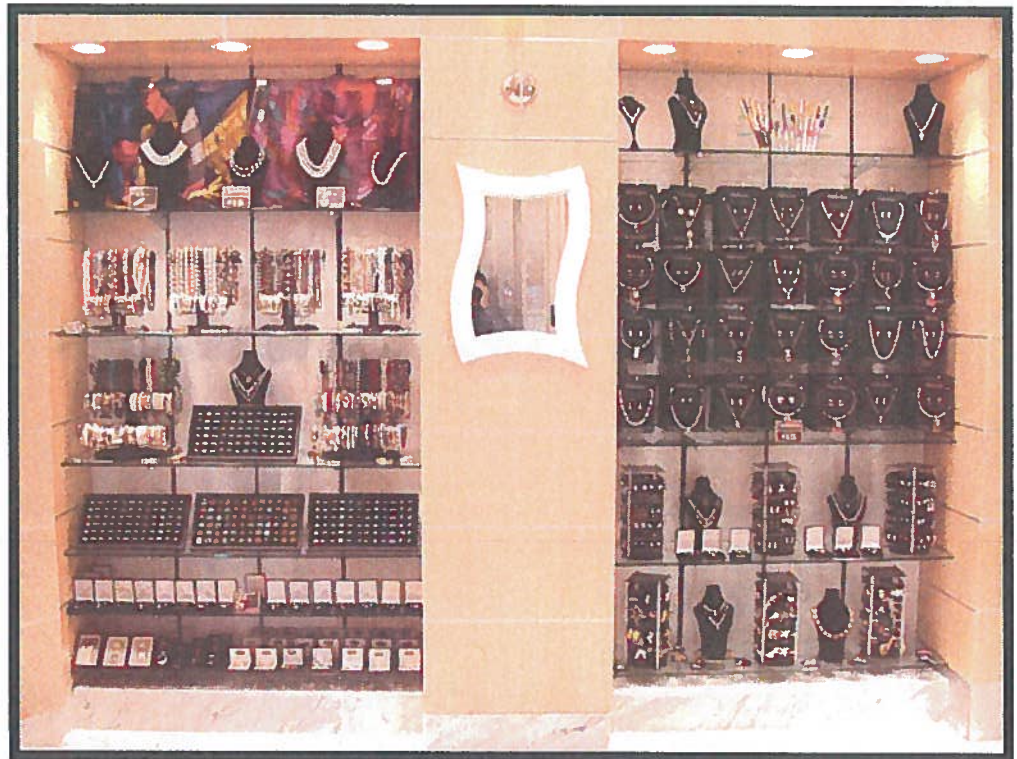
YYC



MIA

Please note that we have included a rendering, floor plan and material board of our recently awarded Tech on the Go store from Charleston International Airport. The Tech on the Go shops we are proposing for Milwaukee General Mitchell International Airport will have the same theming and materials as proposed in Charleston.

Q14 | SPECIALTY RETAIL CONCESSIONS AT
GENERAL MITCHELL INT'L



YYC

