



# **Natural Areas Program**

**Milwaukee County**

**Department of Parks, Recreation and Culture**





## **Mission Statement:**

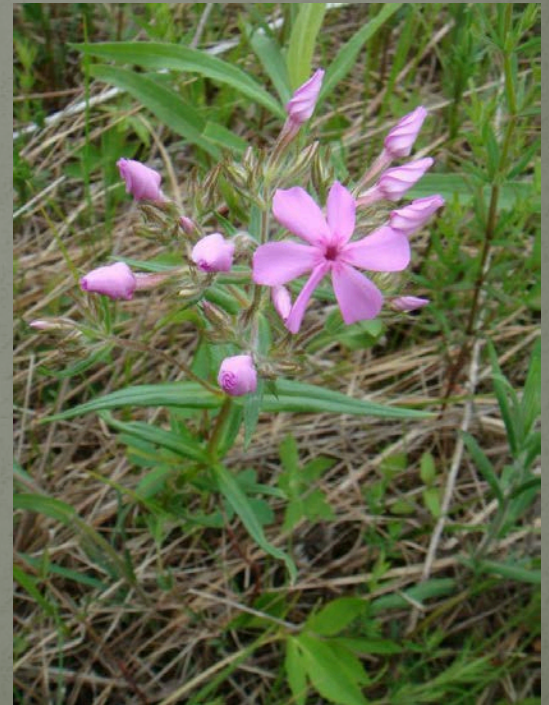
**Blending Milwaukee County's Diverse and Unique Natural Areas  
With Its Culturally Rich Communities to Preserve and Nurture Its  
Natural Heritage for Current and Future Generations**



# Natural Resource Surveys-Plant & Wildlife Diversity

## Only 33% of the Park System has been Surveyed

✧ Plants	698 species
✧ Herptiles	19 species
✧ Birds	329 species
✧ Mammals	16 species
✧ Crayfish	7 Species





# Completion of the 2-Year Green Infrastructure Grant



- ✿ 1,192 Native Trees & Shrubs
- ✿ 14,240 Native Plants
- ✿ 49.1 Acres Planted to Prairie
- ✿ Focused on Bender & Grant Parks

## Volunteers included:

- ✿ South Milwaukee HS
- ✿ Friends of Grant Park
- ✿ REAL Academy
- ✿ Alliance for the Great Lakes
- ✿ AmeriCorps
- ✿ Student Conservation Association
- ✿ UW-M Conservation Club
- ✿ UW-M Service Learning Students

Funded by The Fund for Lake Michigan



# Completion of Year One of the 3-Year Area of Concern (AOC) Wildlife Survey Project

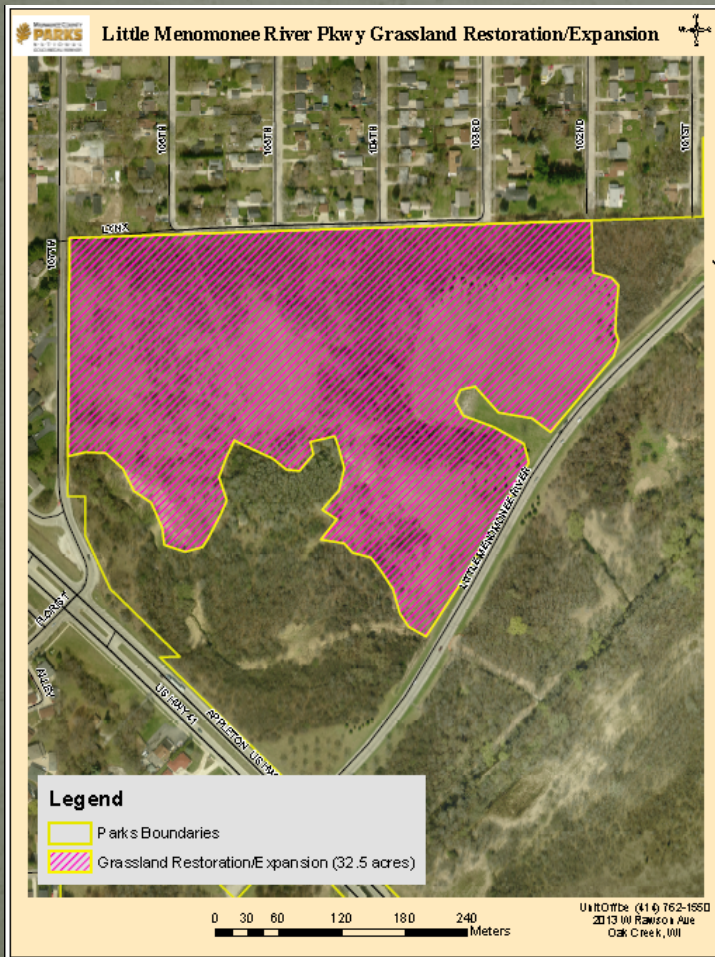
- ✧ Focusing on the Little Menomonee, Menomonee, and Milwaukee River corridors
- ✧ Surveys conducted for breeding & migratory birds, snakes, turtles, salamanders, crayfish, frogs, and toads
- ✧ Funded by the Great Lakes Restoration Initiative through the WI DNR
- ✧ Survey results will be used to set wildlife habitat restoration goals





# Little Menomonee River Grassland Restoration Project

32.5-acre grassland wildlife habitat restoration, and invasive species removal project



Funded by the Great Lakes Restoration Initiative through the WI DNR




## Completion of the Aquatic Invasive Species Lagoon and Shoreline Surveys



The first comprehensive Aquatic Invasive Species surveys within the Park System's 51 lagoons and along its 10.6 miles of Lake Michigan shoreline.

Funded by the WI DNR



A dirt path winds through a field of tall, dry grasses. In the background, there are trees with autumn foliage in shades of yellow, orange, and green. A large, bare tree stands prominently in the center of the path. The sky is overcast and grey.

# Forked Aster Hiking Trail System

**Maintenance and stabilization of  
27 miles of hiking trails**



# Community Outreach

Presentations at community events, workshops, schools, and conferences reached over 833 citizens this past year.



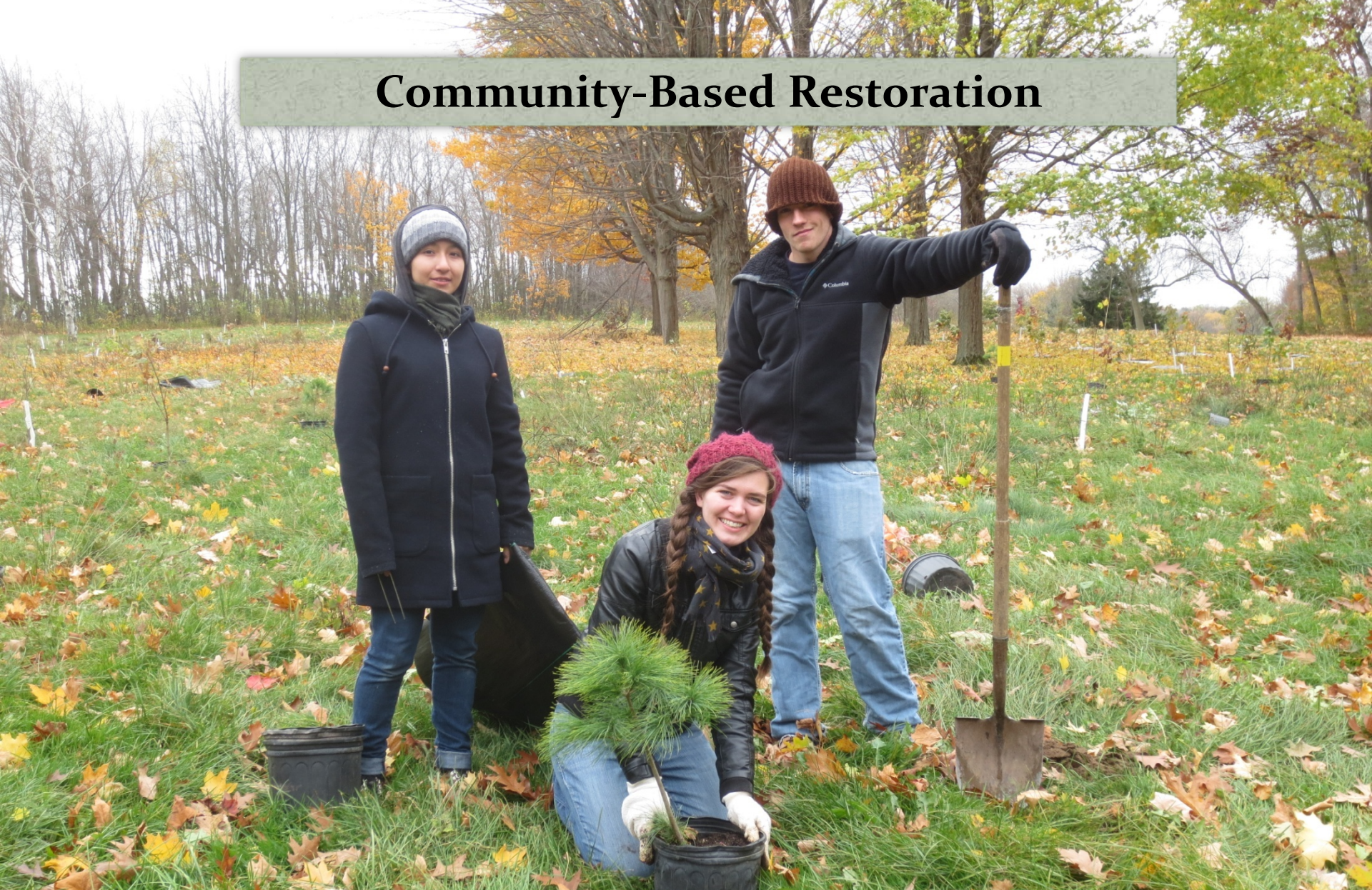
## Frogs & Toads

- Northern Green Frog
- American Bullfrog
- Northern Leopard Frog
- Wood Frog\*
- Spring peeper\*
- Chorus Frog\*
- American Toad





# Community-Based Restoration



**Through staff efforts, and the substantial efforts of our partner organizations, we engaged 1,405 volunteers who donated 16,246 hours assisting in natural resource management projects which improved the ecology of 1,169 acres in 2014.**



# Developing the Next Generation of Conservationists



Natural Areas Internship Program (3 Interns in 2014)

Tree and rain garden planting with REAL Academy and South Milwaukee H.S.

Wildlife monitoring with Franklin H.S. Eco-Club

Invasive species control and tree planting with UW-Milwaukee Conservation Club

Science education days with Greendale H.S. advance science classes

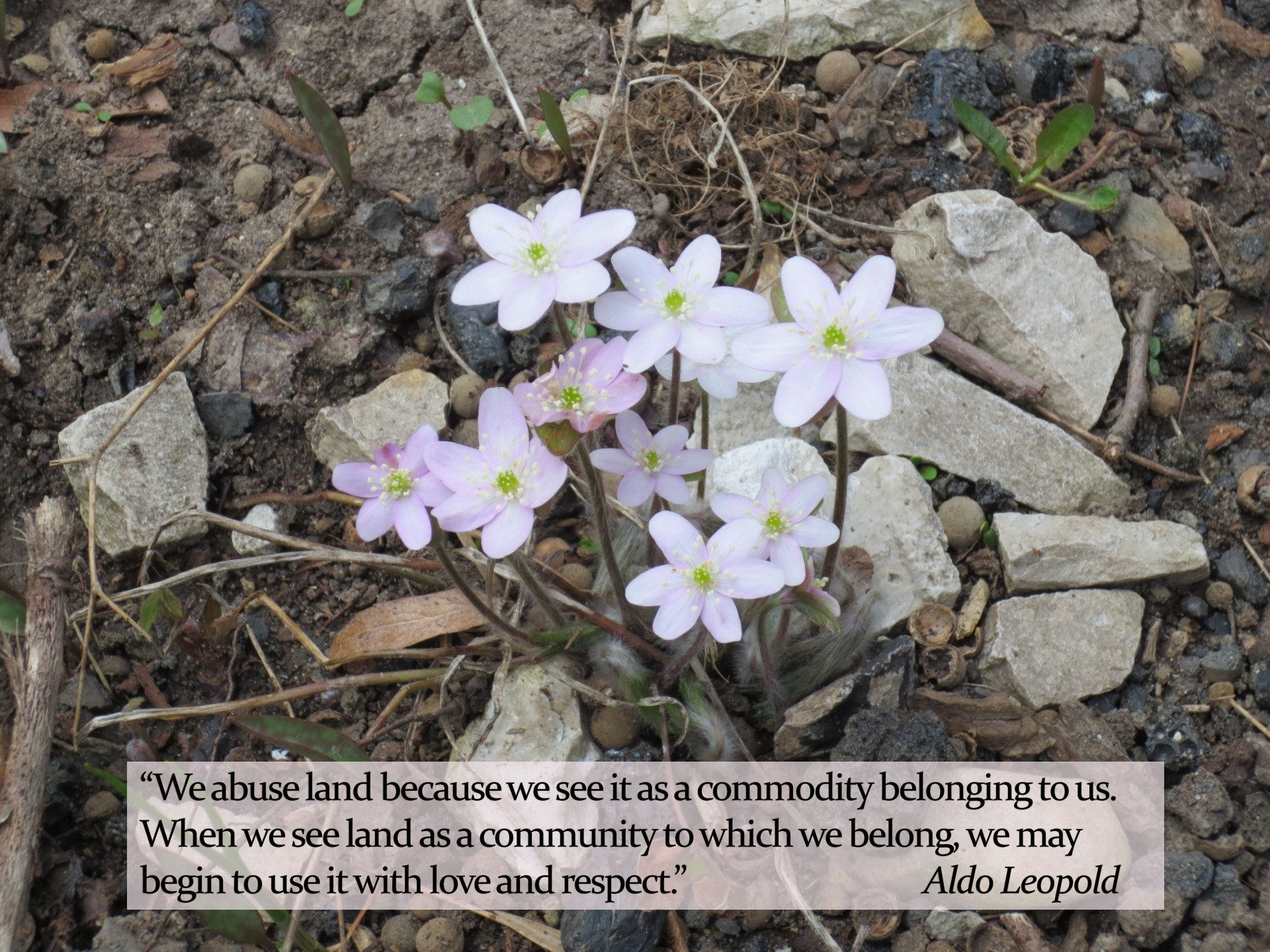


# 2015 Major Projects

- ✧ **Year 2 of the AOC Wildlife Surveys (GLRI-DNR)**
- ✧ **Year 2 of the AOC Grassland Project (GLRI-DNR)**
- ✧ **Year 2 of the Citizen Science Ephemeral Wetland Grant (WI DNR)**
- ✧ **Implementation of the Root River Reforestation Grant (Root-Pike WIN)**
- ✧ **Year 1 of the Engaging Urban Youth to Control Invasive Species Grant (GLRI)**

**Nearly \$700,000 in external funding in 2015 grants and cooperative agreements**





“We abuse land because we see it as a commodity belonging to us. When we see land as a community to which we belong, we may begin to use it with love and respect.”

*Aldo Leopold*