

Figure 1-1. Milwaukee River Basin TMDL Study Area

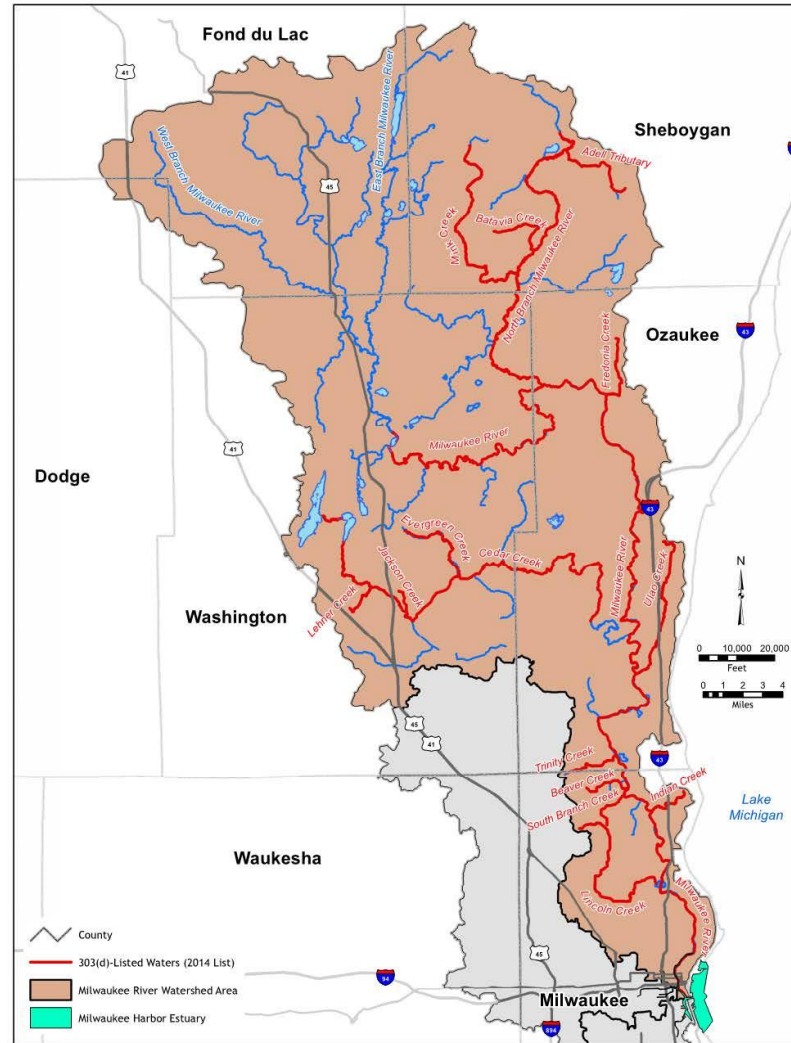


Figure 1-15. Impaired Waters in the Milwaukee River Watershed

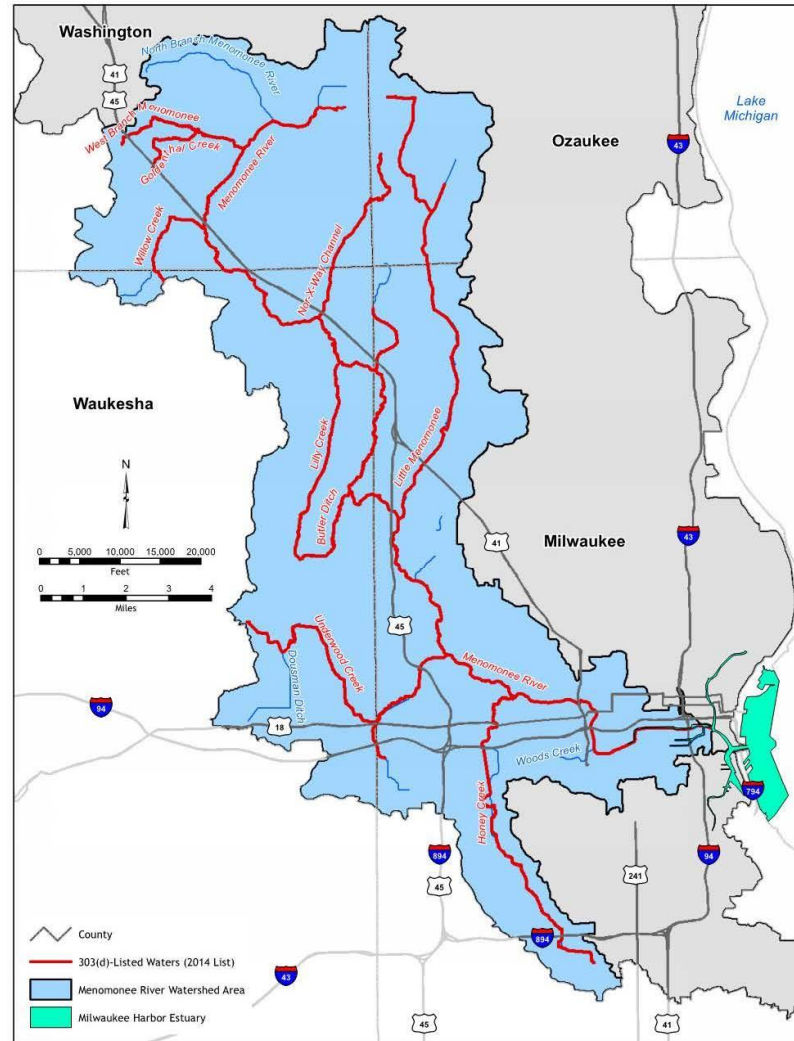


Figure 1-13. Impaired Waters in the Menomonee River Watershed

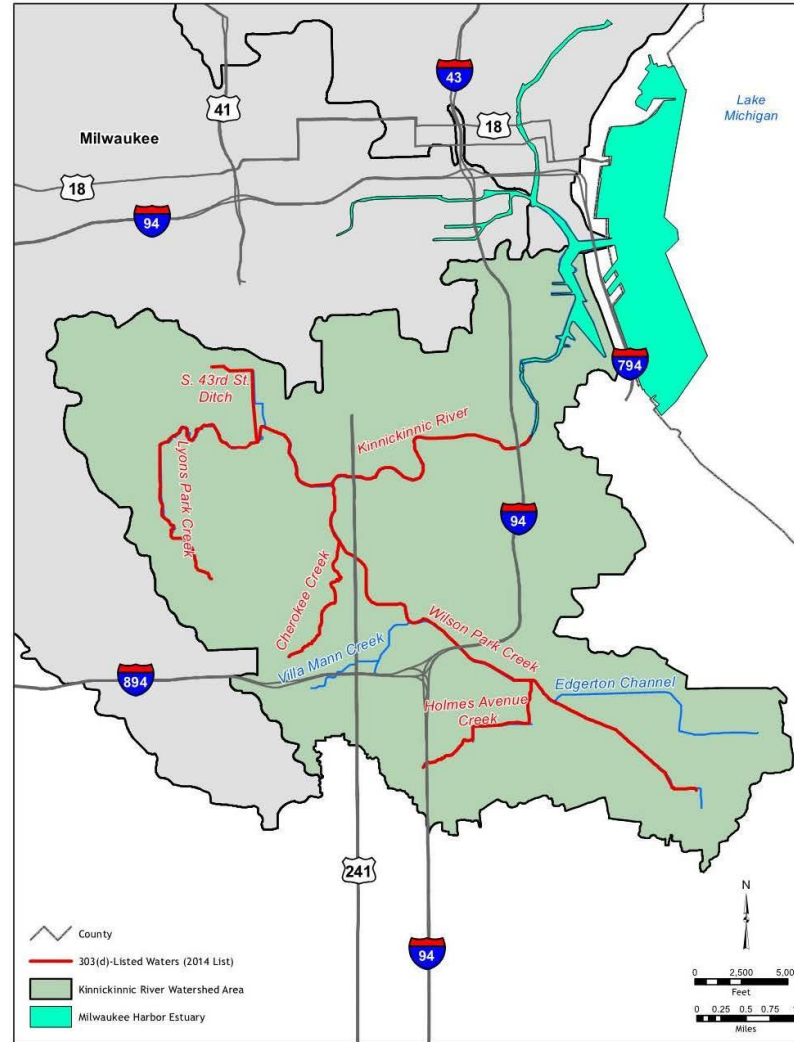
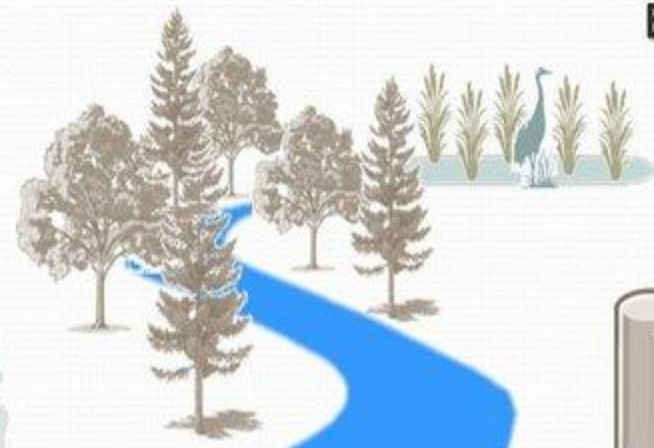


Figure 1-14. Impaired Waters in the Kinnickinnic River Watershed



### Load Allocation

- Runoff from the landscape



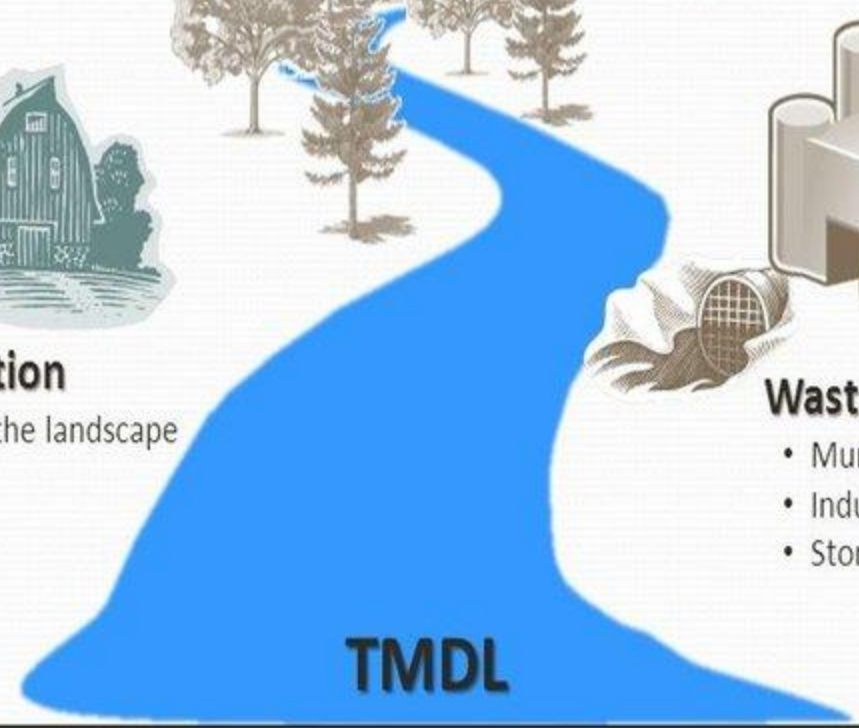
### Background Load

- Naturally occurring from wetlands, forests



### Waste Load Allocation

- Municipal Wastewater
- Industrial Wastewater
- Stormwater (MS4s)



**TMDL**



Load Allocation

+

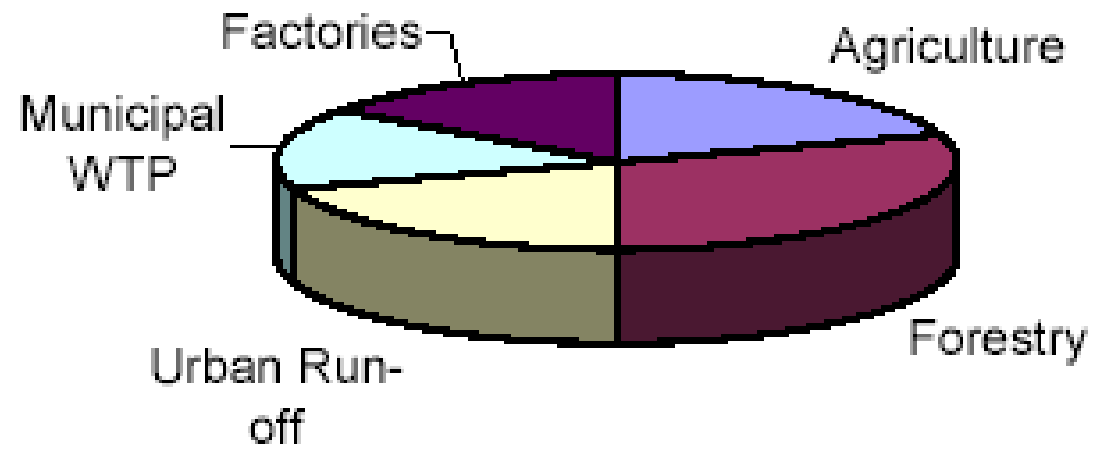
Waste Load Allocation

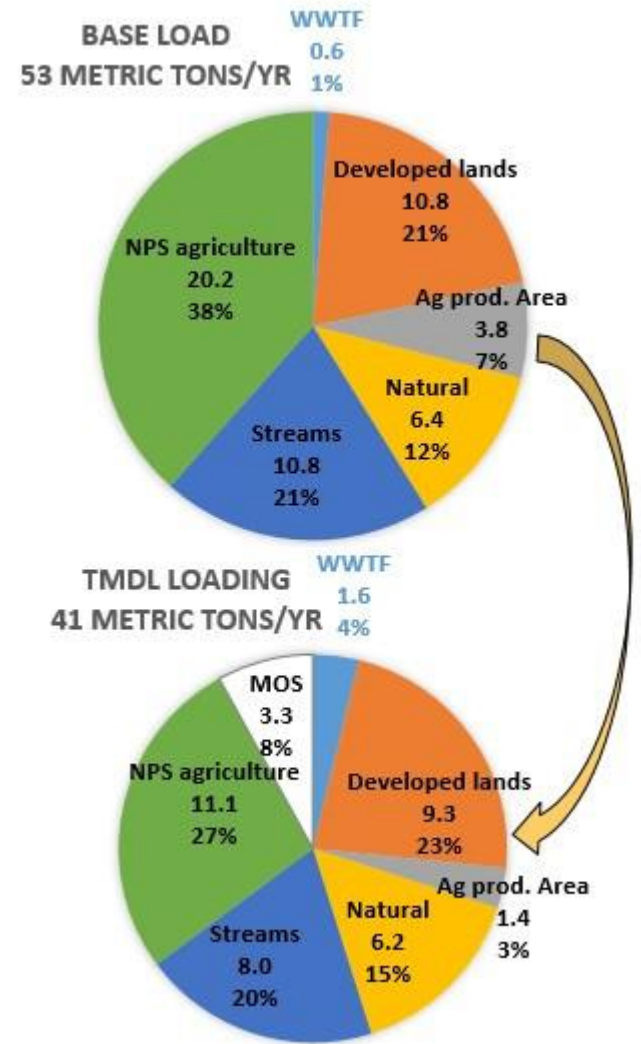
+

Margin of Safety



**A TMDL is the pie, load allocations are the pieces of the pie.**





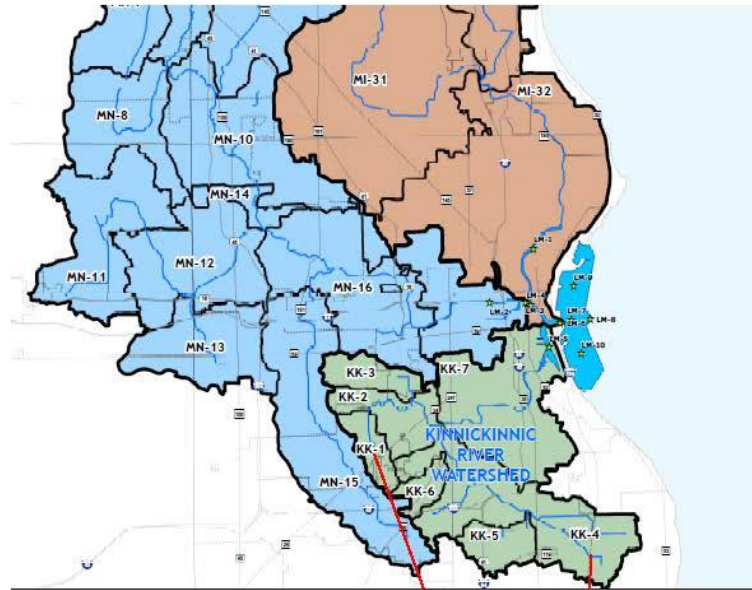


Table A.29 (KK) - Required Percent Reduction of MS4 TP and TSS by Municipality - Draft, 7/19/2016  
 Note: Percent reduction is calculated as the average of the 12 monthly percent load reductions from baseline.

Municipality	Reach	Area (acres)	TP Percent Reduction	TSS Percent Reduction
Cudahy, City	KK-4	953	88%	80%
Greenfield, City	KK-1	108	64%	73%
	KK-2	111	64%	72%
	KK-4	649	88%	80%
Milwaukee, City	KK-6	556	65%	72%
	KK-1	745	64%	73%
	KK-2	1,218	64%	72%
	KK-3	60	76%	71%
	KK-4	3,671	88%	80%
	KK-5	1,099	76%	75%
	KK-6	59	65%	72%
St. Francis, City	KK-4	66	88%	80%
West Allis, City	KK-2	340	64%	72%
	KK-3	734	76%	71%
West Milwaukee, Village	KK-3	304	76%	71%