

County of Milwaukee
Interoffice Communication

DATE: 5/20/2020
TO: Marcelia Nicholson, Chairwoman, Milwaukee County Board of Supervisors
FROM: Donna Brown-Martin, Director, Department of Transportation
SUBJECT: MCTS Introduction to Transit – Informational Report

BACKGROUND

Transit in Milwaukee is over 160 years old. Milwaukee County acquired the assets of a formerly for-profit transit system operator 45 years ago and has been working with Milwaukee Transport Services Inc. (MTS) to connect our community to jobs, education and life with essential transit services ever since.

The Milwaukee County Transit System (MCTS) is owned by Milwaukee County & operated by MTS, who is overseen by the Milwaukee County Department of Transportation (MCDOT). MTS is a quasi-governmental instrumentality of Milwaukee County that is recognized as an element of Milwaukee County by the Federal Transit Administration (FTA). As an entity of the County, MTS has tax-free status with the Internal Revenue Service (IRS).

MTS is recognized as a private non-profit company in the State of Wisconsin. Transit employees work directly for MTS. We have a separate pension and benefit package. Facilities and equipment used to operate transit are owned by Milwaukee County.

The Director of Transportation and MCDOT provide County oversight of MTS as well as prepares and manages Federal/State transit grants. Milwaukee County is the Grantee. The five-person Board of Directors for MTS is comprised of MCDOT staff: Director, Deputy-Director, and Fiscal/Budget Administrator, as well as an appointment of the Chairwoman of the County Board. The MTS President is the 5th board member.

MCTS Size and Scope

MTS employs over 1,000 individuals who work in a dozen different departments. The 2020 Budget is \$160 million. MCTS's fleet includes 350 40-foot diesel buses, and dozens of support vehicles. The core route structure operates 365 day out of the year and carries about 97% of all riders. Freeway Flyers, University bus (Ubus) routes and Milwaukee Public School system focused services operate on weekdays and provide most of the balance of annual ridership. Summer services produce less than one percent of annual rides.

Transit Plus services for persons with disabilities include ADA van rides provided by two ADA van service contractors in Milwaukee County that give door to door paratransit service: National Express and First Transit. Same day taxi ride service is also available, and some passengers take dedicated services to Goodwill facility workshops on a regular basis. Over 500,000 paratransit rides are given annually.

MCTS Projects of Community Interest

East-West BRT is a 9-mile, regional, modern transit service connecting major employment, education and recreation destinations in downtown Milwaukee, Milwaukee's Near West Side, and Marquette University with Wauwatosa and MRMC. <http://www.eastwestbrt.com/>

MCTS NEXT is about creating more high frequency bus routes. By increasing transit service in busy corridors, we can help more people get to work, school and everywhere they are going faster and easier.
<https://www.ridemcts.com/programs/mcts-next>

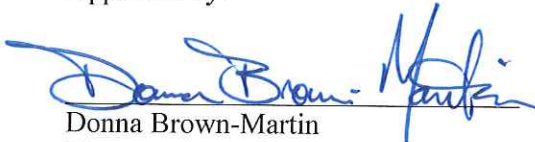
RECOMMENDATION

This report is for informational purposes unless otherwise directed.

Prepared by:

Dan Boehm, President & Managing Director, MCTS

Approved by:


Donna Brown-Martin
Director, Department of Transportation

Introduction to Milwaukee County Transit System

Dan Boehm, President & Managing Director



June 10, 2020

Transportation, Public Works and Transit Committee

MCTS is owned by Milwaukee County & operated by MTS, who is overseen by MCDOT

Agenda

1. Milwaukee Transport Services, Inc.
2. MTS Organizational Structure
3. MCTS: Transit & Paratransit Services
4. Bus Rapid Transit Project
5. MCTS Next
6. MCTS Mission, Vision and Values



Milwaukee Transport Services, Inc.

Milwaukee Transport Services, Inc. (MTS), is a quasi-governmental instrumentality of Milwaukee County that is recognized as an element of Milwaukee County by the Federal Transit Administration (FTA). As an entity of the County, MTS has tax-free status with the Internal Revenue Service (IRS).

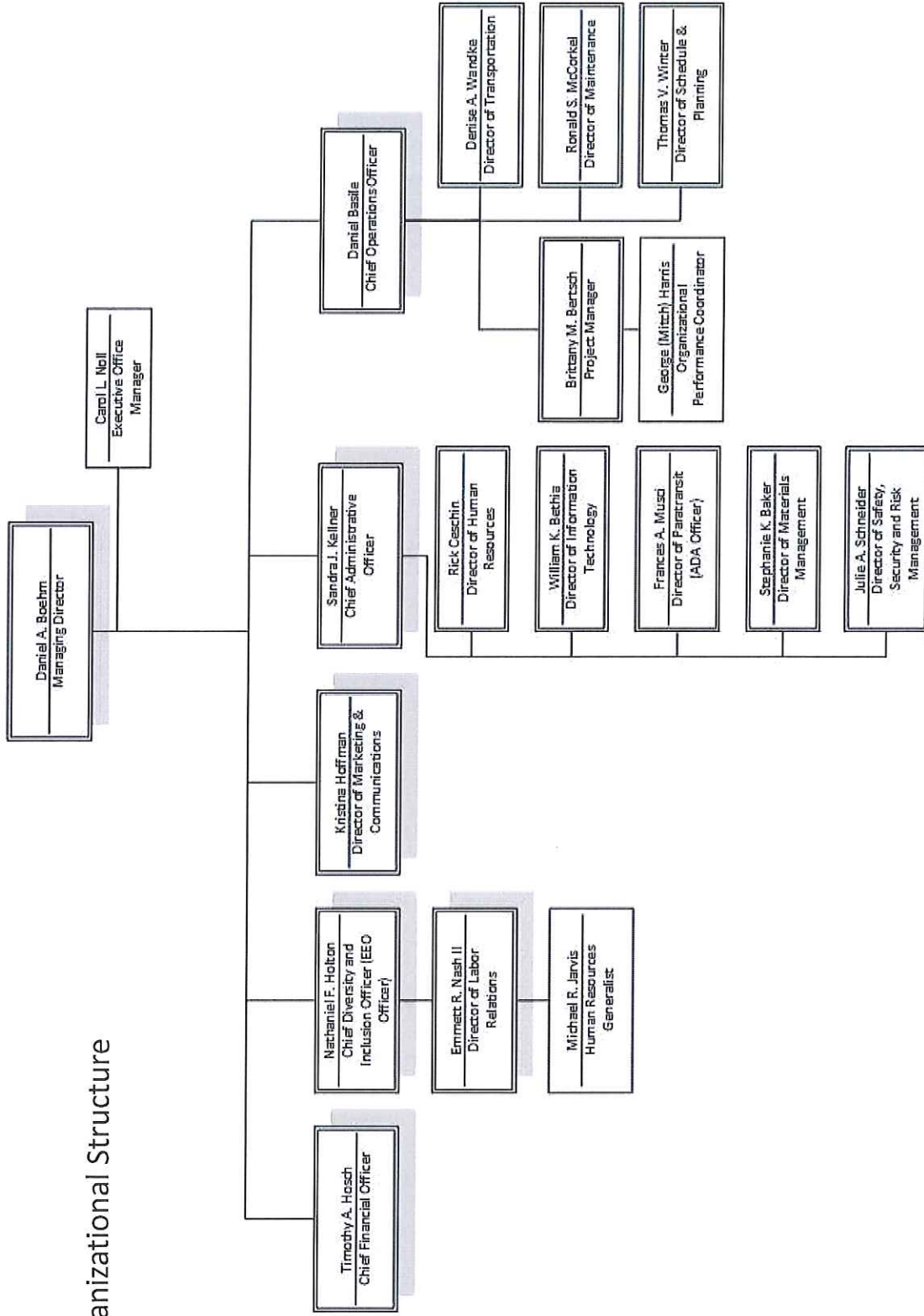
MTS is recognized as a private non-profit company in the State of Wisconsin. Transit employees work directly for MTS. We have a separate pension and benefit package. Facilities and equipment used to operate transit are owned by Milwaukee County.

The Director's Office of the Milwaukee County Department of Transportation (MCDOT) provides County oversight of MTS as well as prepares and manages Federal/State transit grants. Milwaukee County is the Grantee.

The five-person Board of Directors for MTS is comprised of MCDOT staff: Director, Deputy-Director, and Fiscal/Budget Administrator, as well as Supervisor Weishan, and MTS President, Dan Boehm.



MTS Organizational Structure



MCTS Budget

2020 Budget is \$160 Million. It is recommended by CEX and gets amended/adopted by County Board with the rest of County Budget.

County Vehicle Registration Fee	\$16 million
County Tax Levy	\$12 million
Farebox Revenue	\$32.6 million
State Funding	\$68.4 million
Federal Funding (e.g. 5307 & CMAQ)	\$25 million
Other contract & advertising Revenue	\$6 million

Fleet of 350 buses:

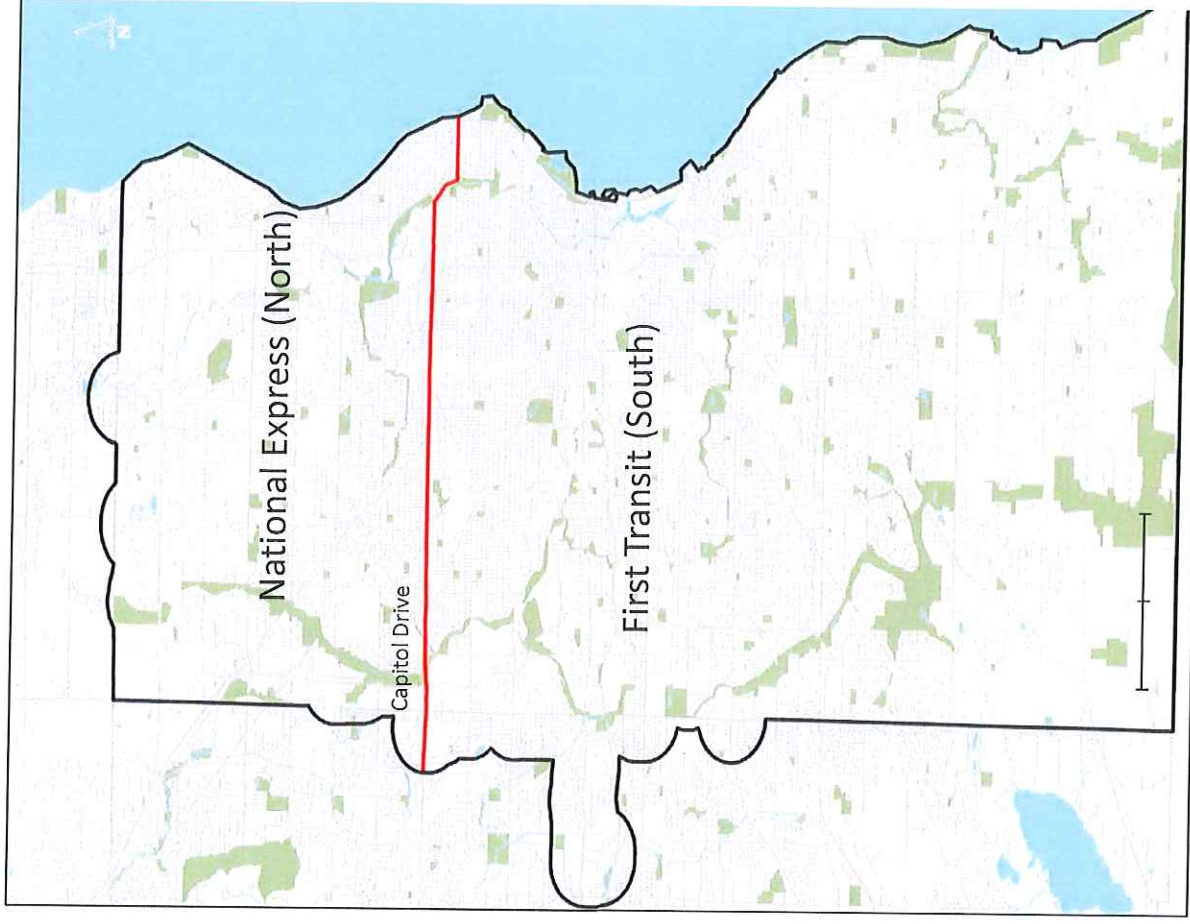
- Cost of Diesel bus is close to \$500,000
- Cost of Battery Electric bus is close to \$1 million

28.2 million passengers (fixed route & paratransit)
Operate 365 days/year, 22 hours per day



Paratransit Services

- Transit Plus ADA application review & eligibility determinations
- Oversee two ADA van service providers (contractors) in Milwaukee County that give door to door service
 - National Express
 - First Transit
- Same day taxi rides curb-to-curb also available as an option for some people with disabilities.
- 500,000 paratransit rides/year.
- Mobility Management Team of two people orient persons with disabilities for independent use of fixed route buses

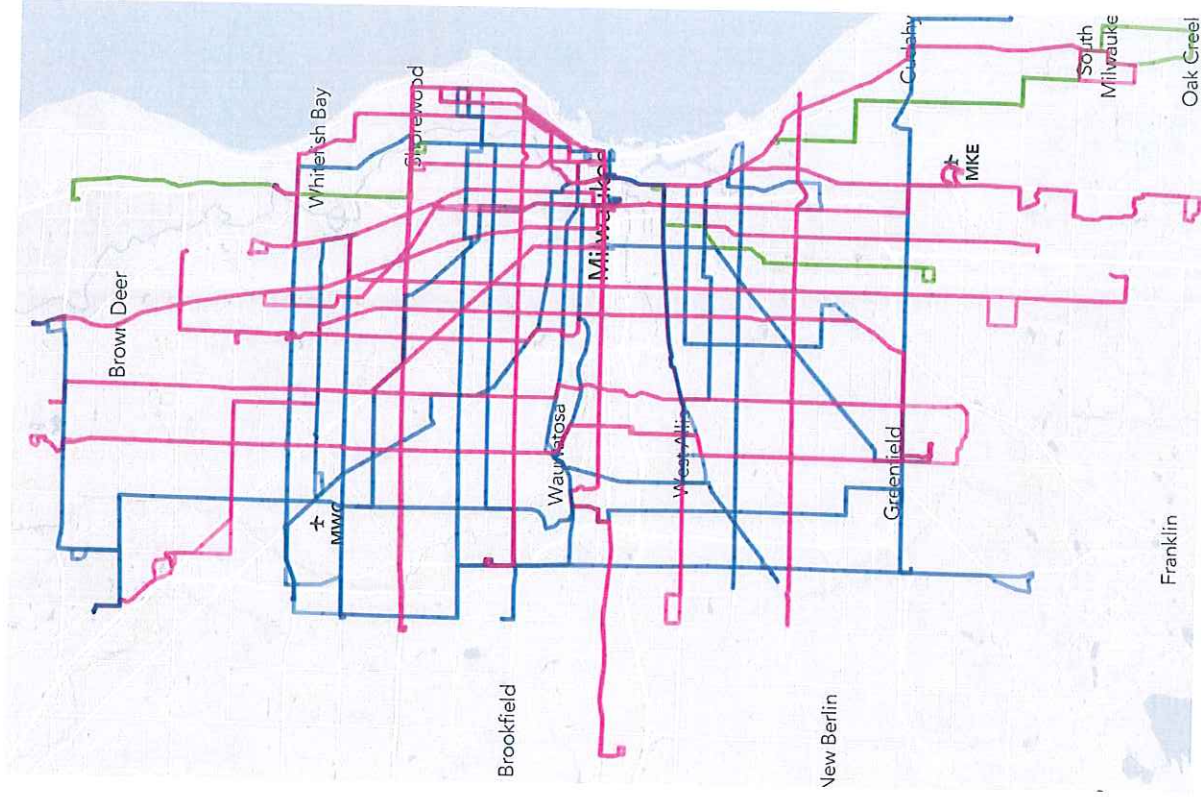


MCTS NEXT - Route Redesign

MCTS NEXT: is about creating more high frequency bus routes. By increasing transit service in busy corridors, we can help more people get to work, school and everywhere they are going faster and easier.

Sample Map (Key)

- Purple Lines have 15-minute service or better
- Blue Lines are less frequent
- Green Lines only operate during daytime hours



Useful MCTS Links

Official MCTS website: www.ridemcts.com

MCTS Paratransit: <https://www.ridemcts.com/rider-information/accessibility/transit-plus>

East-West BRT: <http://www.eastwestbrt.com/> or here: <https://www.ridemcts.com/programs/bus-rapid-transit>

MCTS Next: <https://www.ridemcts.com/programs/mcts-next>

And Just for fun. . . Bus operators are everyday heroes.
<https://www.ridemcts.com/excellence>

