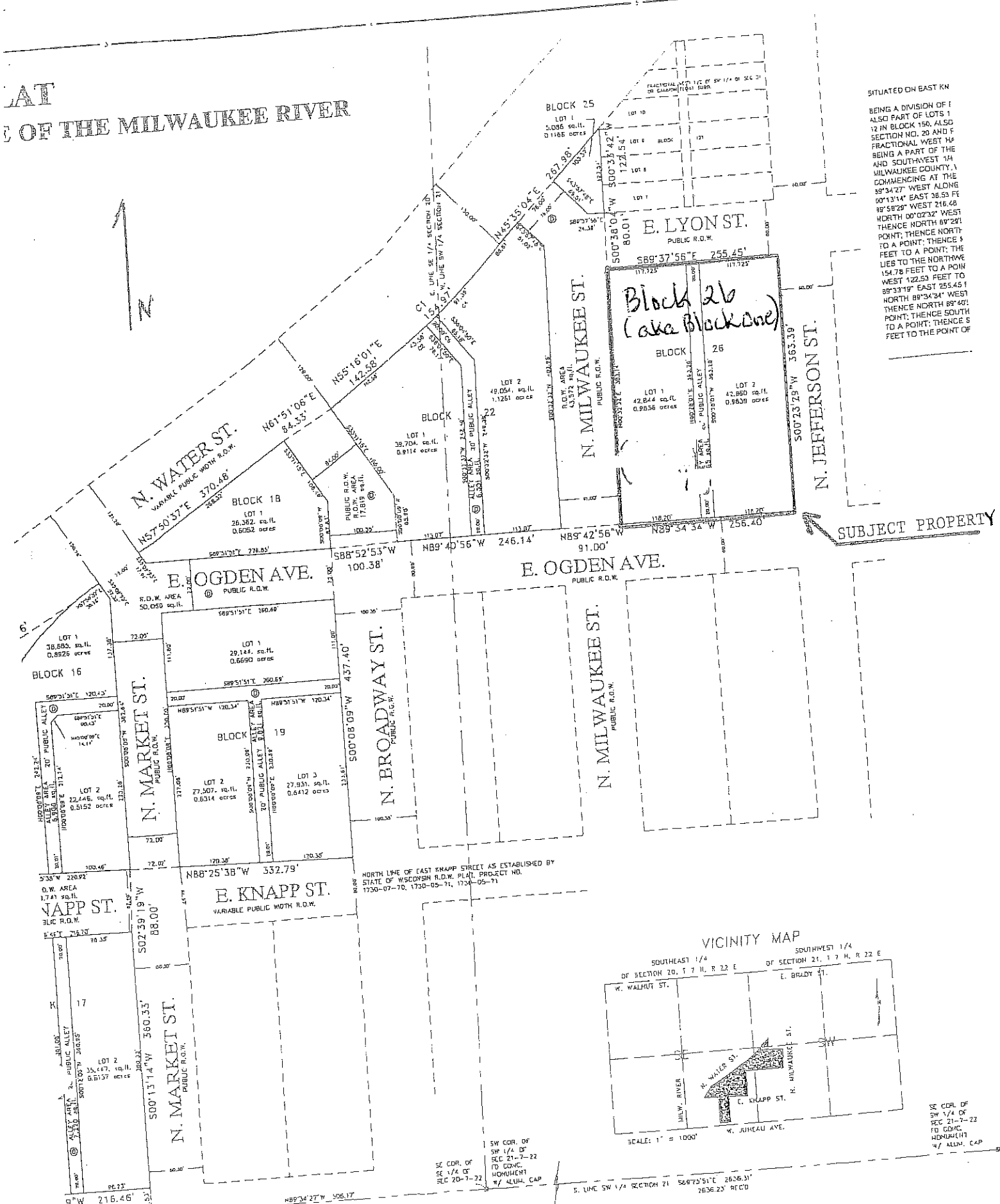
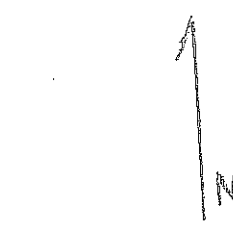
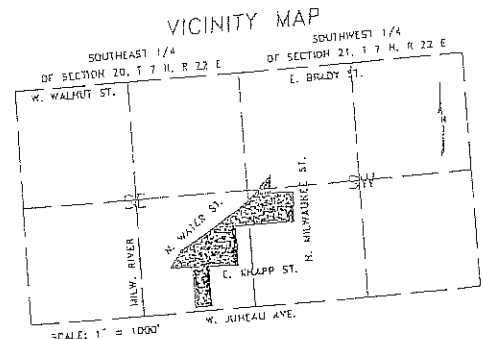


# AT OF THE MILWAUKEE RIVER



SITUATED ON EAST KN  
 BEING A DIVISION OF I  
 ALSO PART OF LOTS 1  
 12 IN BLOCK 150, ALSO  
 SECTION NO. 20 AND F  
 FRACTIONAL WEST 1/4  
 BEING A PART OF THE  
 AND SOUTH-WEST 1/4  
 MILWAUKEE COUNTY, I  
 COMMENCING AT THE  
 39°34'27" WEST 38.53 FE  
 39°58'29" WEST 216.68  
 NORTH 00°02'32" WEST  
 THENCE NORTH 09°28'  
 POINT; THENCE NORTH  
 FEET TO A POINT; THENCE  
 FEET TO THE NORTHWE  
 154.78 FEET TO A POIN  
 WEST 122.53 FEET TO  
 88°33'19" EAST 255.45  
 NORTH 88°34'34" WEST  
 THENCE NORTH 89°40'  
 POINT; THENCE SOUTH  
 TO A POINT; THENCE S  
 FEET TO THE POINT OF

SUBJECT PROPERTY



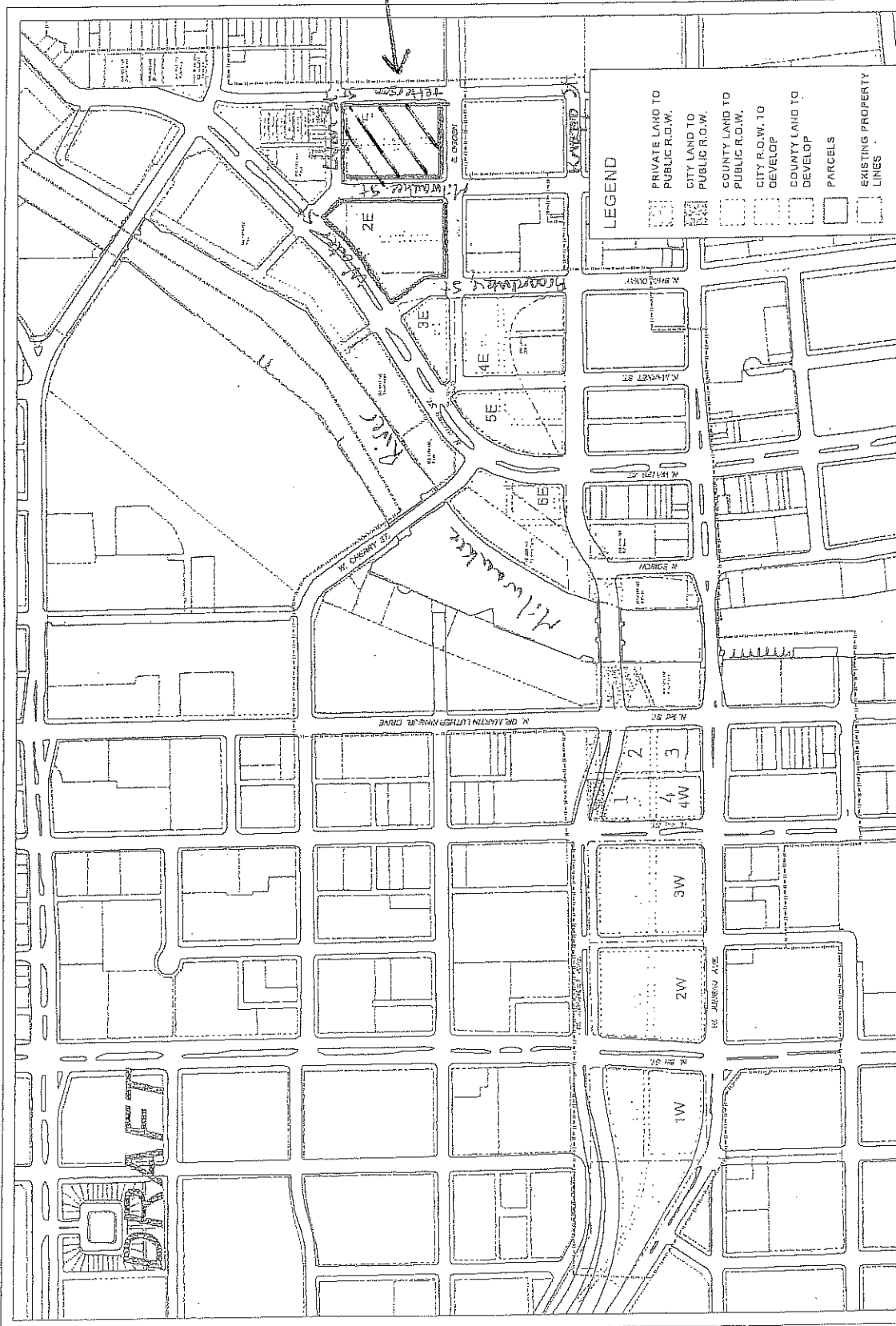
SE COR. OF  
 SW 1/4 OF  
 SEC 21-7-22  
 TO CORNER  
 MONUMENT  
 1/4 ALUM. CAP

SW COR. OF  
 SW 1/4 OF  
 SEC 21-7-22  
 TO CORNER  
 MONUMENT  
 1/4 ALUM. CAP

S. LINE SW 1/4 SECTION 21 56°12'51"E 2626.31'  
 2636.25' RC'D

N ↑

Subject  
Block 26  
(aka Block One)



**LEGEND**

- PRIVATE LAND TO PUBLIC R.O.W.
- CITY LAND TO PUBLIC R.O.W.
- COUNTY LAND TO PUBLIC R.O.W.
- CITY R.O.W. TO DEVELOP
- COUNTY LAND TO DEVELOP
- PARCELS
- EXISTING PROPERTY LINES

1/4" = 1' 0" August 27, 2003

Paula East Redevelopment  
Land Ownership

PLANNING AND DESIGN INSTITUTE, INC.  
110 S. BRIDGE ST. SUITE 1000  
ANN ARBOR, MI 48106-1000