

COUNTY OF MILWAUKEE
Inter-Office Communication

Date: February 14, 2025

To: Marcelia Nicholson, Chairwoman, Milwaukee County Board of Supervisors

From: Guy Smith, Executive Director, Milwaukee County Parks

Subject: Greendale – Dale Creek and Grootemaat Woods Land Swap

File Type: Informational Report

REQUEST

This report provides an informational report regarding a potential swap of parkland between Milwaukee County and the Village of Greendale.

POLICY

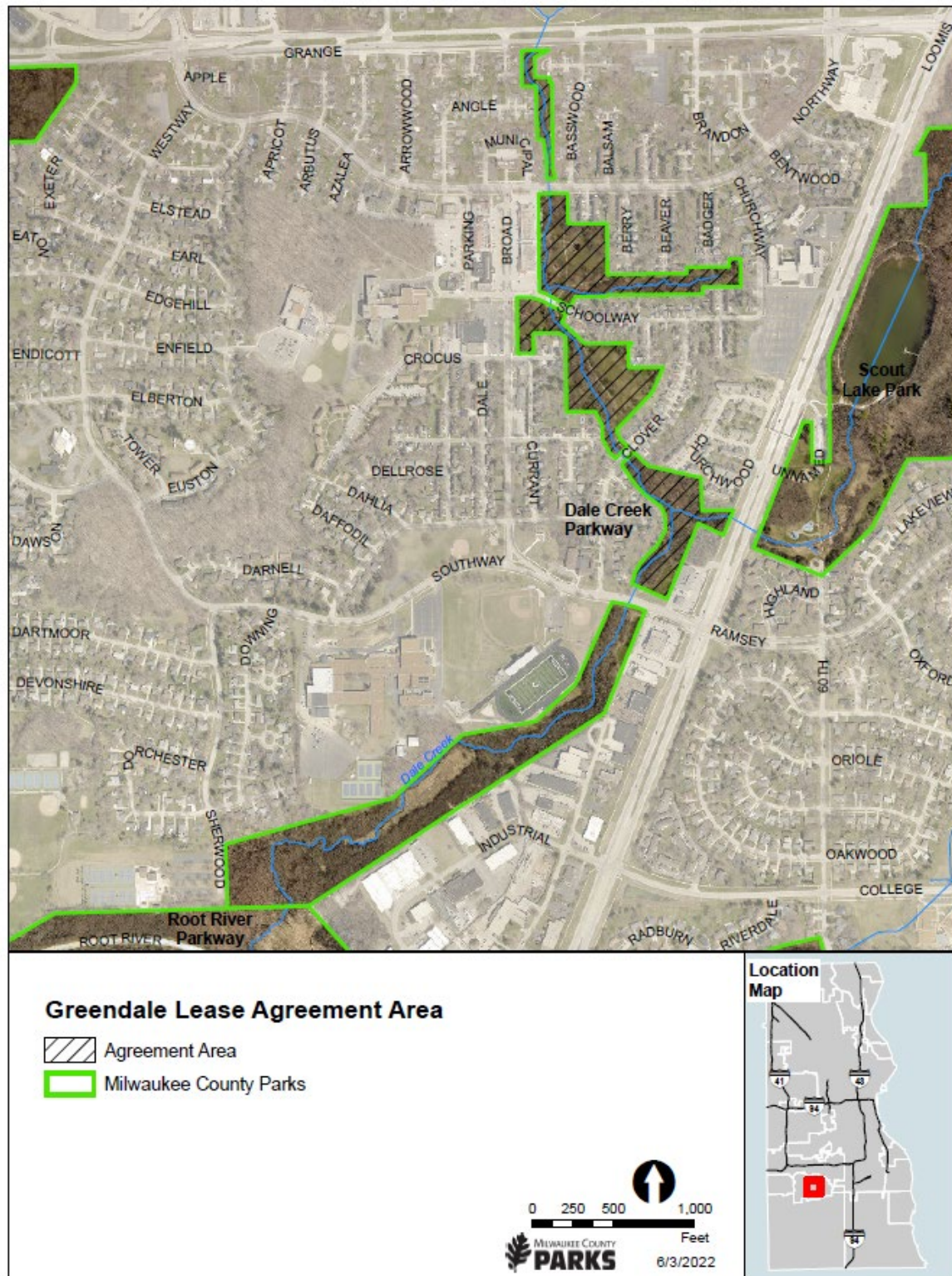
Wisconsin State Statutes:	
Milwaukee County Code of General Ordinances:	
Specific Adopted Budget:	
Specific Adopted Budget Amendment:	
Specific Adopted Capital Project:	

BACKGROUND

Related File No's:	
Associated File No's (Including Transfer Packets):	
Previous Action Date(s):	

Milwaukee County Parks has partnered with the Village of Greendale since 1995 for the management of the Dale Creek property which is located in the Village's downtown area. The 1995 Lease that governs this partnership has expired and the County and Village have had discussions about the Village acquiring the park in order to make improvements to it. One concept that has been proposed is a swap of land that is currently owned by the Village in exchange for the Dale Creek property. This parcel is known as Grootemaat Woods (4300 W. Ramsey Ave, Greendale) and is further described in the images below. The Dale Creek property is approximately 21.91 acres of land spread across 4 parcels, the Grootemaat Woods property is 13.75 acres of land. The Dale Creek contains a gazebo, playground, children's community garden, walking paths, woods, and a stream. The Grootemaat Woods property is a wooded area with walking paths.

Dale Creek Leased Area (1995-2024) –





Above: Daffodil Park playground within the Dale Creek.



Above: Gazebo, built in 1995, within the Dale Creek at the intersection of Broad St. and Schoolway Dr.



Above: Dale Creek walking paths run closely along private property lines.

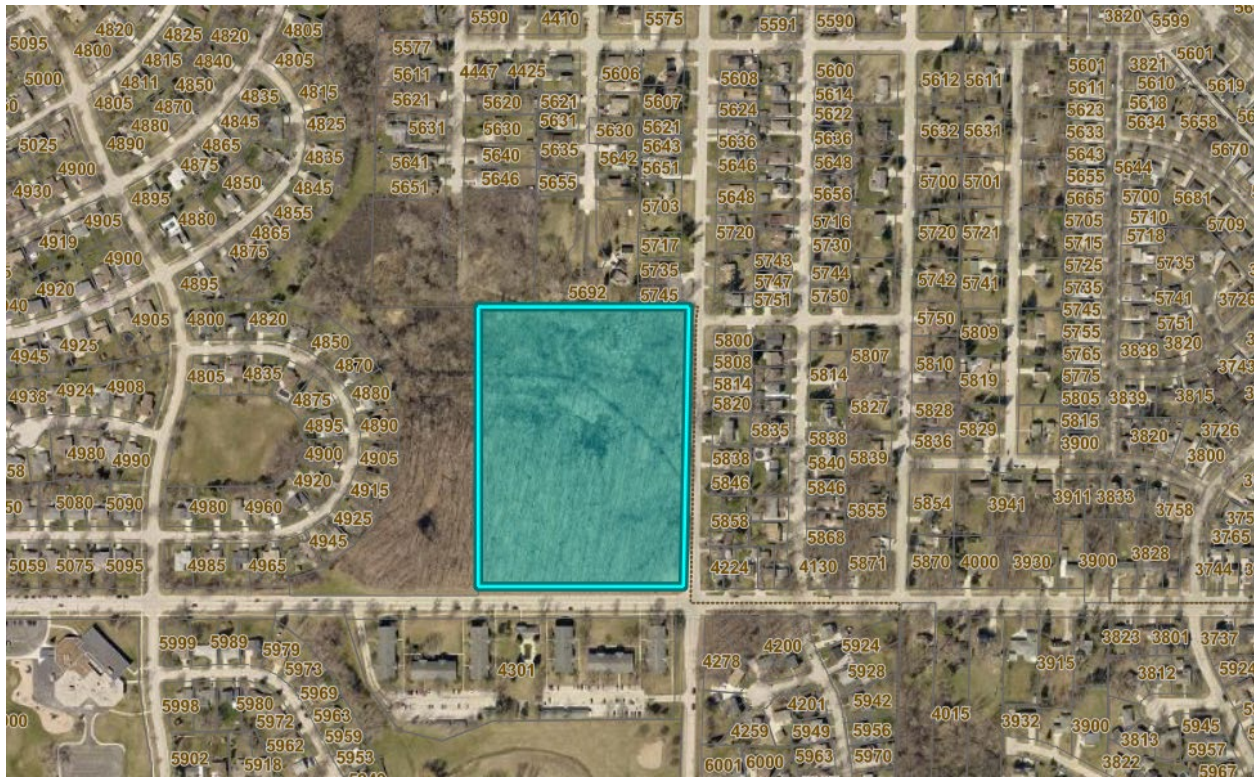


Above: Childrens community garden within the Dale Creek.



Above: New pedestrian bridge from Broad Street to Daffodil Park within the Dale Creek.

Grootemaat Woods –



Above: The location of Grootemaat Woods at the intersection of S. 43rd St and Ramsey Ave in Greendale.



Above: Entrance to the Grootemaat Woods.



ALIGNMENT TO STRATEGIC PLAN

Describe how the item aligns to the objectives in the [strategic plan](#):

- 1A: Reflect the full diversity of the County at every level of County government - Parks strives to recruit a diverse workforce that reflects the community that we serve.
- 1B: Create and nurture an inclusive culture across County government
- 1C: Increase the number of County contracts awarded to minority and women-owned businesses
- 2A: Determine what, where, and how we deliver services to advance health equity
- 2B: Break down silos across County government to maximize access to and quality of services offered
- 2C: Apply a racial equity lens to all decisions – Parks ability to open community pools will be determined by the number of lifeguards we bring onboard along with a focus on equity and safety for both staff and the community.
- 3A: Invest “upstream” to address root causes of health disparities
- 3B: Enhance the County’s fiscal health and sustainability
- 3C: Dismantle barriers to diverse and inclusive communities

FISCAL EFFECT

This report is for informational purposes only.

TERMS


None

VIRTUAL MEETING INVITES

PREPARED BY:

Jim Tarantino, Deputy Director, Milwaukee County Parks

APPROVED BY:

Guy Smith, Executive Director Milwaukee County Parks 

CC: David Crowley, County Executive
Mary Jo Meyers, Chief of Staff, County Executive's Office
Sheldon Wasserman, Committee on Parks & Culture Chairperson
Steve Taylor, Committee on Parks & Culture Vice Chairperson
Priscilla Coggs-Jones, Committee on Parks & Culture Member
Jack Eckblad, Committee on Parks & Culture Member
Felesia Martin, Committee on Parks & Culture Member
Juan Miguel Martinez, Committee on Parks & Culture Member
Anne O'Connor, Committee on Parks & Culture Member
Kelly Bablitch, Chief of Staff, Milwaukee County Board of Supervisors
Janelle M. Jensen, Legislative Services Division Mgr, Office of the County Clerk
Aaron Hertzberg, Director, Department of Administrative Services
Joseph Lamers, Fiscal & Budget Director, DAS
Vince Masterson, Fiscal & Strategic Asset Coordinator, DAS
Pamela Bryant, Capital Finance Manager, Comptroller's Office
Justin Rodriguez, Capital Finance Analyst, Comptroller's Office
Allyson R. Smith, Committee Coordinator, Office of the County Clerk
Anthony Rux, Budget & Management Analyst, DAS-PSB
Sandy Saltzstein, Research and Policy Analyst