

Milwaukee County  
Parks, Energy, & Environment Committee  
*May 17, 2016*

Parks System Master Plan Update




MILWAUKEE COUNTY  
**PARKS**

## Project Scope

1. update 1991 Park and Open Space Plan by incorporating new land use, natural resource inventory, demographic, planning, and other data, revised development objectives and recommendations, and additional updates to the year 2050; and
2. develop a 10-year Park System Master Plan, in which Pros Consulting will provide DPRC with a recommended ten-year capital improvements plan through a needs analysis, public needs survey, and public and stakeholder involvement.





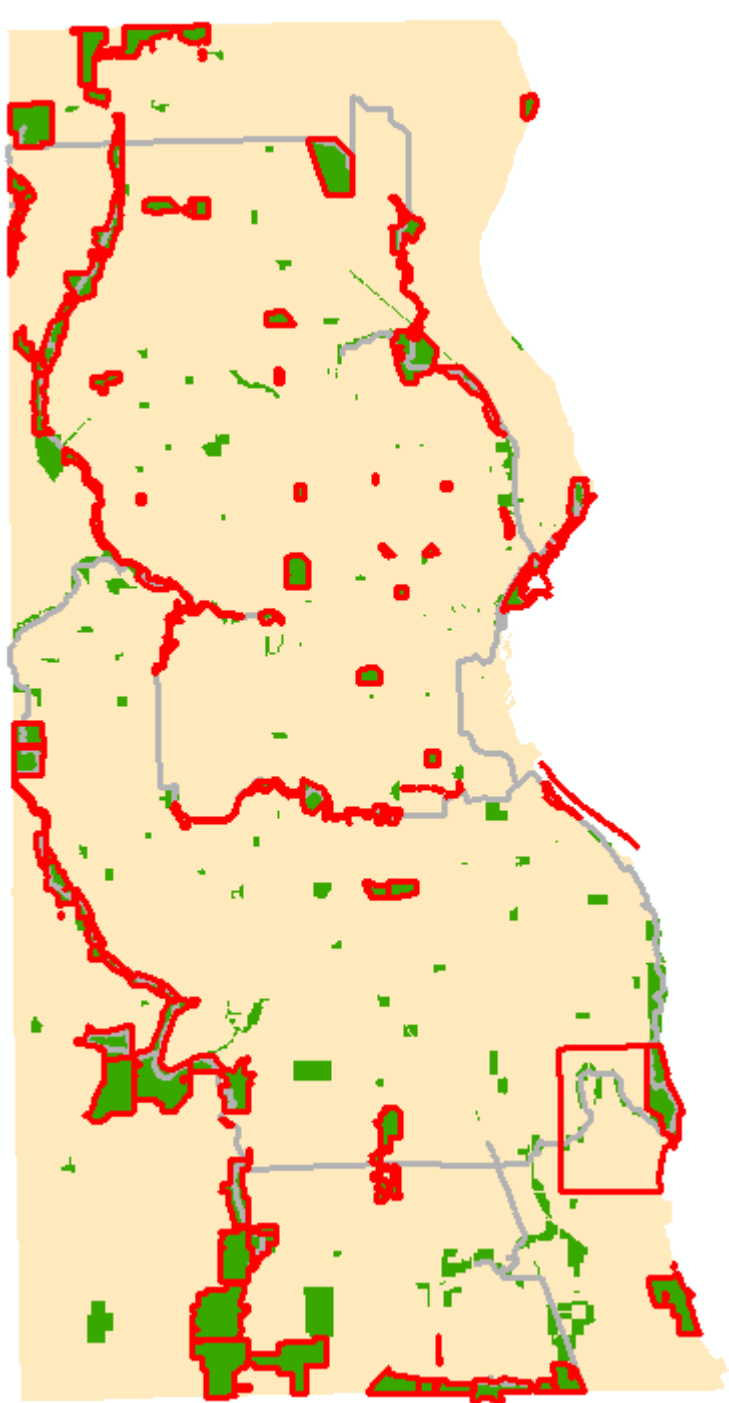
## Actions To Date:

- January 2016: Development and review of project plan(s) and scope, and ongoing data collection.
- February 2016: Held ten staff focus group meetings.
- March 2016: Hosted eight focus group meetings with stakeholders.
  1. Governmental – Other Jurisdictions/Municipalities
  2. Environmental/Conservation
  3. Key Partners
  4. Advocacy/Friends Groups
  5. Education & Youth Users
  6. Event Organizers
  7. Outdoor Recreation
  8. Trails

## Actions To Date:

- April 2016: Ongoing data collection, preparing draft chapters on demographics.
- May 2016:
  - Four meetings with County Board of Supervisors and one meeting with some of County staff regarding expected outcomes, opportunities, and future goals.
  - Develop public survey (To be issued in late May/June)
  - Park site/facility assessments





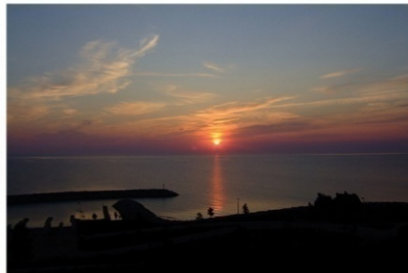
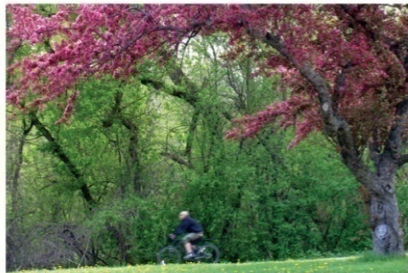
MILWAUKEE COUNTY  
**PARKS**

Planned May 2016 Park Assessments

## Next Steps:

- June 2016: Completion of a statistically valid survey.
- July 2016:
  - Update report to PEEC
  - Public Information Forums
  - Staff Engagement Forums
  - Ongoing data collection and document drafting





Milwaukee County  
Parks, Energy, & Environment Committee  
*May 17, 2016*

Parks System Master Plan Update



MILWAUKEE COUNTY  
**PARKS**