

Investing in Justice: Courthouse Complex Update

September 2025



Agenda

- Project Foundation
- Updates
 - Funding & Finance
 - Design & Construction
 - Justice Policy & Programs
 - Stakeholder Engagement
- Requests & Considerations

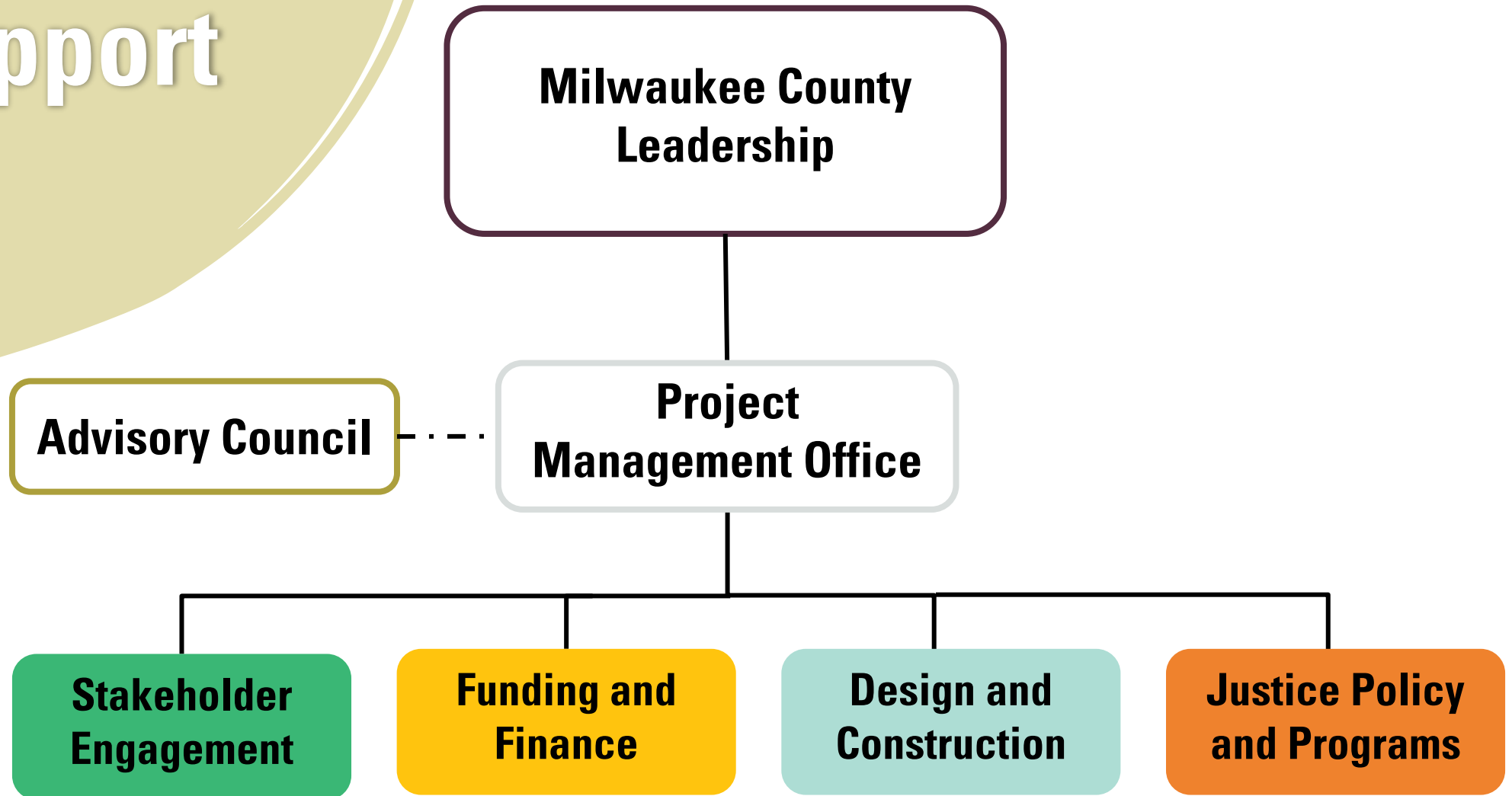
Our Commitment: Vision & Mission

WE ENVISION... A welcoming and adaptable Courthouse Complex that embodies justice, equity, safety, and community well-being and addresses the holistic needs of the public, systems-involved individuals, and staff now and in the future.

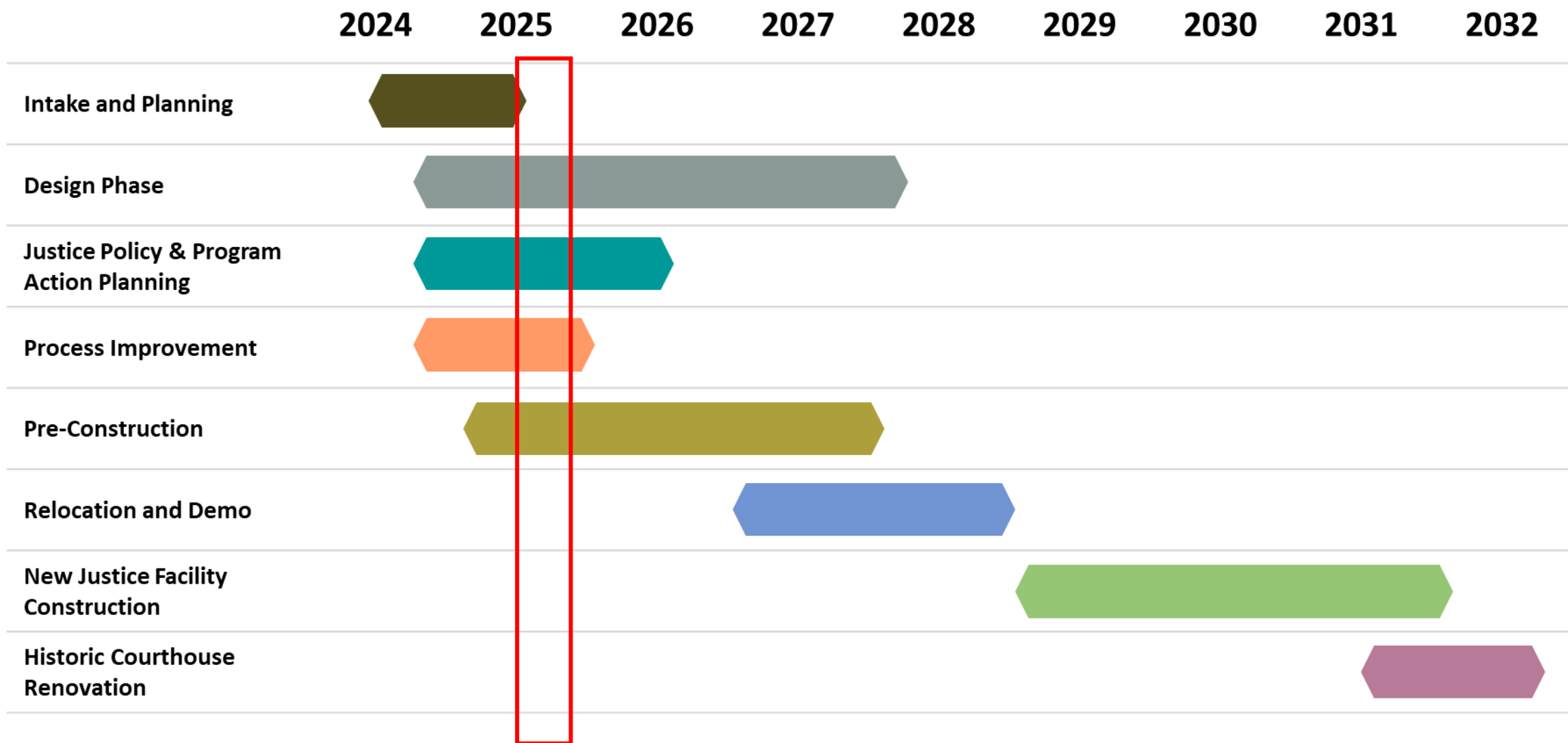
PROJECT MISSION

Our mission is to create welcoming Courthouse Complex facilities that prioritize equity and the needs of the Milwaukee community. We will do this by fostering safety, accessibility, efficiency, and restorative practices through an adaptable design that is informed by stakeholder engagement and accommodates state-mandated services and comprehensive resources that uphold justice and fairness for everyone.

Structure of Support



Project Timeline



Meeting Project Goals through Decisions

PROJECT GOALS



DECISION-MAKING PRINCIPLES



Funding and Finance



Financial Status



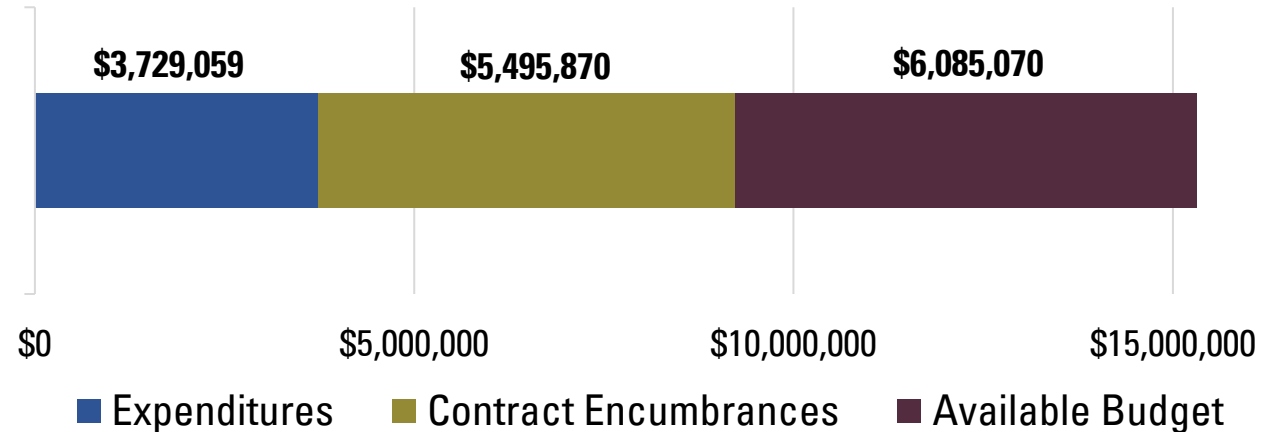
Funding and Finance

Secure, monitor and report on project funds

Courthouse Complex Planning

FY24/FY25 Budget: **\$15,310,000**

Project: WC0276011



Existing and Anticipated Encumbrances

- Concord (owners rep)
- AECOM (design consultant)
- HGA (energy systems consultant)
- Mueller Communications (advocacy/communications)
- National Center for State Courts (justice policy & programs)
- Capstone (lobbying)
- Construction Manager (selection made, contract being executed)
- Cost Validation Consultant (selection made recently, finalizing contract)



Funding Updates



Funding and Finance

Secure, monitor and report on project funds

STATE BUDGET PROCESS

- Funding for IJCC via funding mandated services (expressway patrol)
- \$18M in year one, \$20M in year two of the biennium

CONGRESSIONALLY DIRECTED SPENDING

- \$6M request did not advance in 2026; infrastructure is ineligible

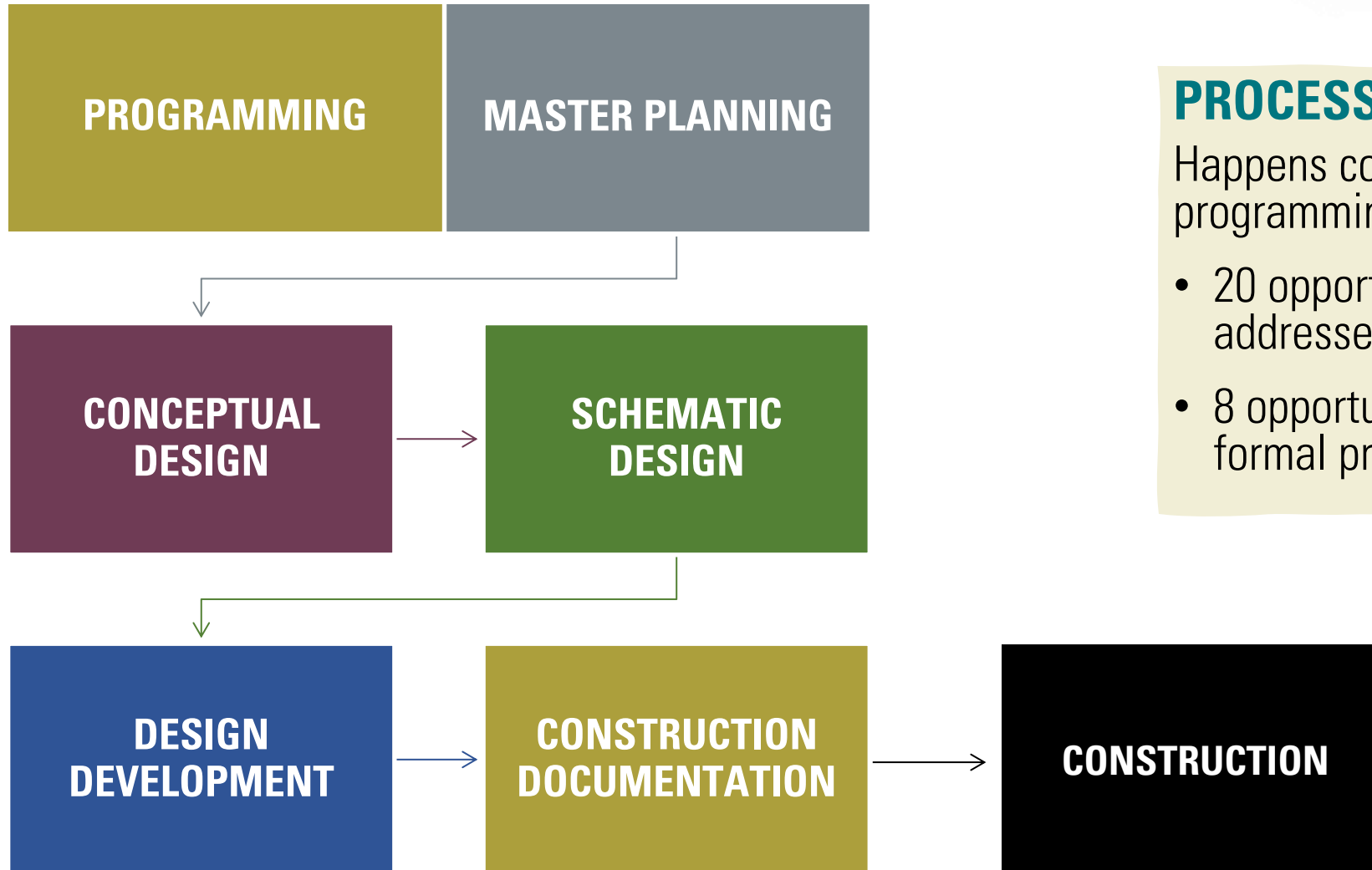
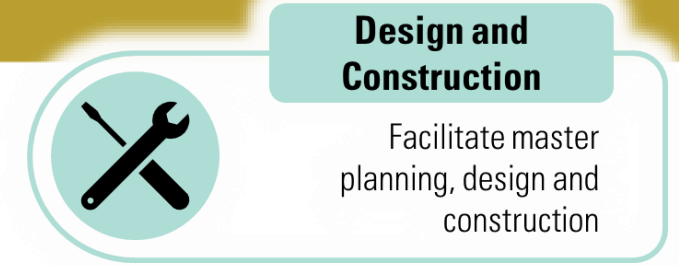
MILWAUKEE COUNTY CAPITAL BUDGET PROCESS

- A 2026 capital request of \$11,101,280 was made to continue planning and design
- Significant capital construction request planned for 2027

Design & Construction



Steps in Design Phase



PROCESS IMPROVEMENT:

Happens concurrently with programming:

- 20 opportunities to be addressed in design process
- 8 opportunities identified for formal process improvement



Design Progress



Design and Construction

Facilitate master planning, design and construction

RECENT PROGRESS

- Reports drafted:
 - Programming/space needs for new facility
 - Caseload analysis report
 - Public Safety Building and Historic Courthouse existing conditions
 - Public Safety Building/Historic Courthouse artifacts
- Peer-to-peer data gathering:
 - Site tours – Lake County, Will County, Waukesha County
 - Phone calls – Wayne County, Orange County, Maricopa County, Marion County, Polk County, Multnomah County

Design Progress



Design and Construction

Facilitate master planning, design and construction

RECENT PROGRESS

- **Conceptual Design** – reviewed 30% conceptual design packages for new facility and blocking and stacking options
- **Process Improvement** scope defined
- Historic Courthouse **Master Planning** started
- Exploring highest and best re-use options for the Historic Courthouse
- **Swing Space** needs defined
- Ongoing design team integration meetings to clarify Courthouse Complex infrastructure system needs

Design Progress



Design and Construction

Facilitate master planning, design and construction

UPCOMING ITEMS (NEXT SIX MONTHS)

- Reports finalized (as listed previously)
- Swing space strategy developed
- Sustainability design workshopped
- Historic Courthouse master planning completed
- Authorities having jurisdiction coordination
- Hazardous material assessment completed
- Completion of energy system master plan and system recommendations

➔ **Targeting Q2 2026 for completion of conceptual design**

Design Progress



Design and Construction

Facilitate master planning, design and construction

EXAMPLES OF KEY CONSIDERATIONS

- Courtroom quantities
- Food service location
- Building entrance strategy
- Gym/wellness facility inclusion
- Shooting range inclusion
- Judge's chambers and amenities
- Swing space strategy
- Parking policy
- Energy strategy
- Other potential occupants



Justice Policy & Programs



Summary of Efforts

NCSC supported a collaborative values-setting process, including a working session with justice system leaders, a public survey and outreach to system-involved stakeholders, as well as a series of focus groups and one-on-one interviews.

NEXT STEPS

- Collaboration with AECOM to ensure values are thoughtfully integrated into the planning and design of the new facility.
- Continued partnership with the Community Justice Council to further embed and advance these values throughout our justice system.



Justice Policy and Programs

Prioritize and lead
improvement efforts in
the justice system

Through this engagement, the following core values were identified:

- **Safety/Security**
- **Collaboration**
- **Trust**
- **Innovation**
- **Community**
- **Efficiency/Accessibility**
- **Transparency**

Stakeholder Engagement



Internal Stakeholders



PREPARING FOR SWING SPACE CHANGES

- Establish touchpoints for staff updates in the Courthouse Complex
- Support leaders navigating operational and procedural updates
- Provide consultation and change management support

CRITERIA FOR OFFSITE MOVEMENT

- Limited disruption to publicly facing operations and elected offices
- Cost-effectiveness regarding type of space needed for offsite location
- Moves to support long-term master plan for Historic Courthouse

Community Engagement



Stakeholder Engagement

Elevate community and user perspectives and lead communications

RECENT ACTIVITIES

- Roadshow presented to UMOS employees
- Courthouse tours continue - [Video tour](#) now available in English and Spanish!
- Courthouse Visitor Survey is open and accessible through QR code flyers

UPCOMING ACTIVITIES

- Continue Roadshows (Prison Action Milwaukee, Wisconsin Community Services)
- Milwaukee County Budget Listening Sessions
- CEX Office transitions and County Supervisor outreach



Next Steps



Requests & Considerations

- Join us for a tour of the Public Safety Building
- View and share the [Video Tour](#) describing the initiative
- Relay event opportunities to seek public feedback in your district to Kyle Ashley, Director of Community Outreach investinginjustice@milwaukeecountywi.gov
- Support the FY26 Capital Budget Request to carryout critical, phased design work
- Reach out with questions or for media support as needed before the next informational board report (December 2025)



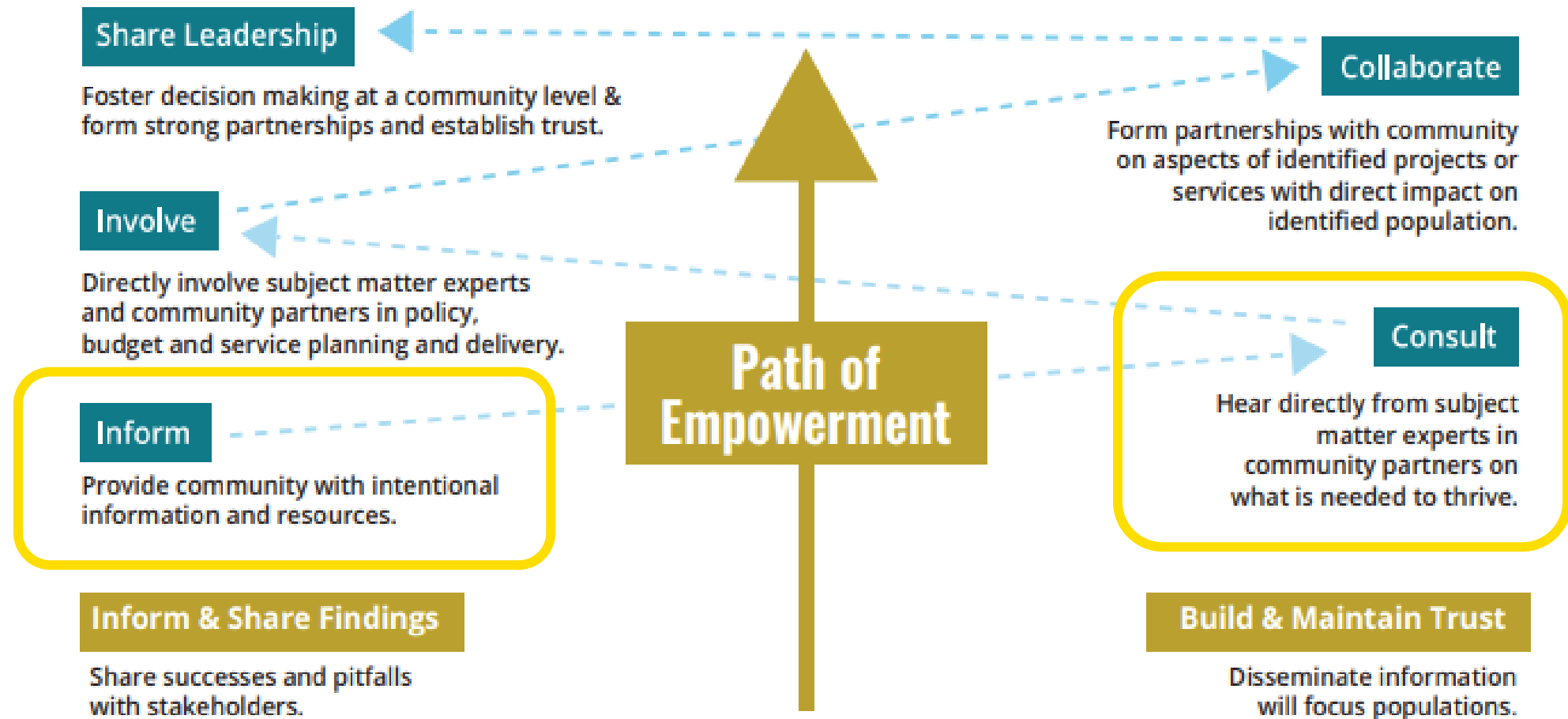
**MILWAUKEE
COUNTY**

Project Frameworks

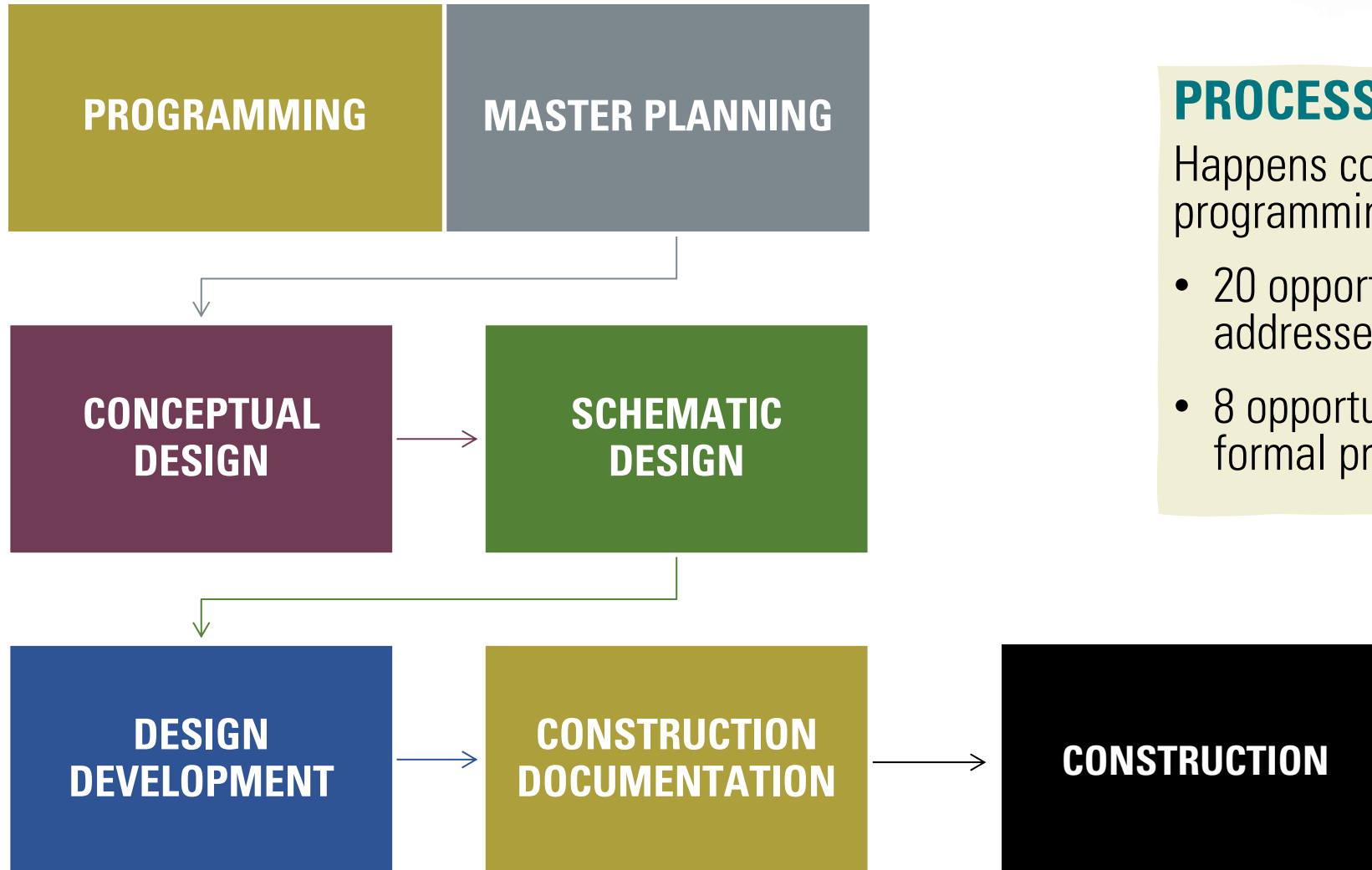
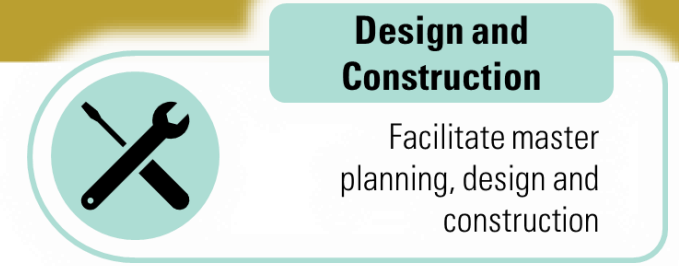


Community Engagement

Office of Equity's (OOE's) Community Engagement Framework



Steps in Design Phase



PROCESS IMPROVEMENT:

Happens concurrently with programming:

- 20 opportunities to be addressed in design process
- 8 opportunities identified for formal process improvement



Current Design Phase



Design and Construction

Facilitate master planning, design and construction

PROGRAMMING:

Defines the courthouse's functional needs, space requirements, and operational goals through stakeholder input and analysis.

BUDGET IMPACTS: Sets initial scope and cost parameters based on space and operational needs.

October 2024 to July 2025

DELIVERABLES

- Criminal & Historic Courthouse Departmental Program Confirmations in Progress
- Existing Conditions Report

MASTER PLANNING:

Establishes a long-term, strategic framework for the courthouse complex, including phasing, future expansion, facility upgrades and integration with surrounding infrastructure.

BUDGET IMPACTS: Informs long-term and phased budget needs, including infrastructure and growth.

August 2025 to March 2026

DELIVERABLES

- Workplace Standards
- Standard Space Types
- Sustainable Design Standards

Upcoming Design Phases



Design and Construction

Facilitate master planning, design and construction

CONCEPTUAL DESIGN:

Develops initial design ideas based on programming—exploring site layout, building massing, and spatial relationships. Early plans outline space use, structure, systems, finishes, and sustainability goals.

BUDGET IMPACTS: Identifies major cost drivers like building size, form, and site challenges.

April 2025 to March 2026

SCHEMATIC DESIGN:

Refines floor plans, structure, and systems to define the courthouse's layout and character. Key drawings, like elevations and section, illustrate overall design intent.

BUDGET IMPACTS: Enables early cost estimating and value engineering to align scope and budget.

March 2026 to October 2026

DESIGN DEVELOPMENT:

Refines architectural, structural, and systems details, coordinating materials, dimensions, and components for constructability and budget alignment. Interior design is fully developed including finish, furniture and equipment.

BUDGET IMPACTS: Refines material and system choices, affecting budget accuracy and control.

October 2026 to July 2027