



City of Milwaukee Sanitary Sewer Easement *in Lincoln Memorial Drive*

December 3, 2024





Sanitary sewer in this area is almost 100 years old.

The City of Milwaukee is planning relaying or relining sewer to address need.

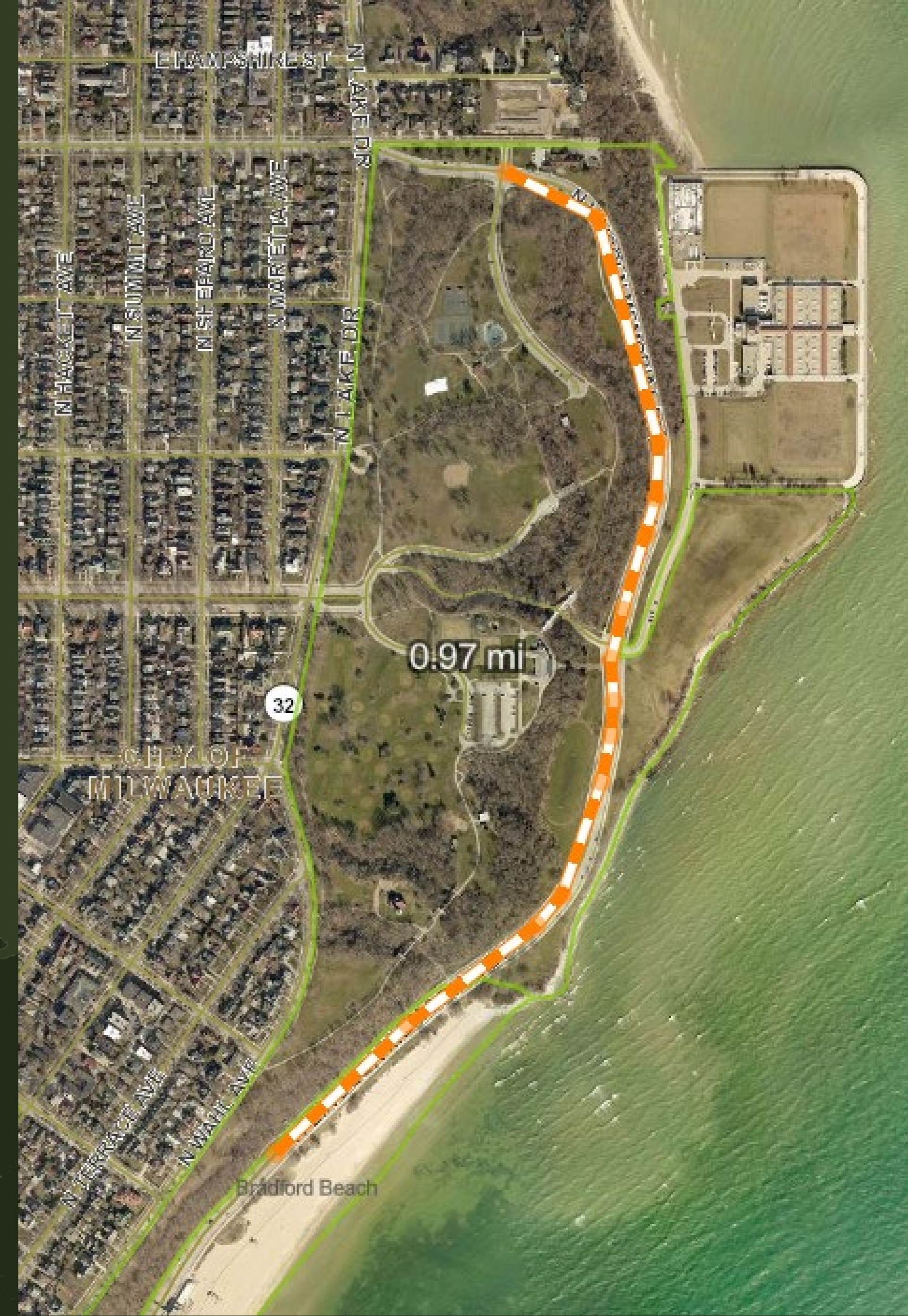
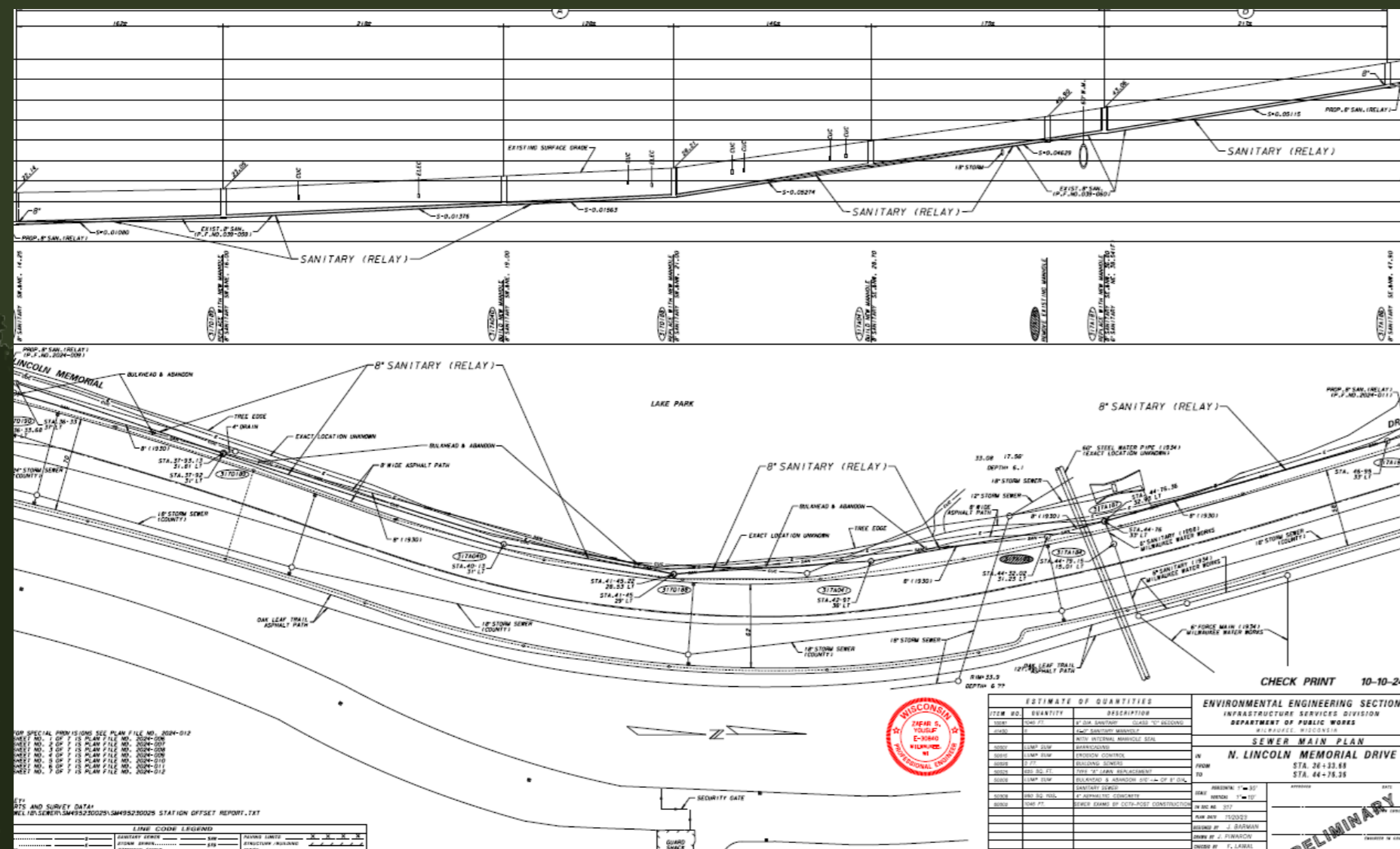
Pavement and retaining wall impacts have been minimized to the extent possible. The easement alignment runs along the west side of the road.

Sanitary Sewer Easement



Easement will recognize a sewer system that has been in place since before the parkland was under the jurisdiction of Milwaukee County.

City and County staff have been working collaboratively to plan for the best solution to provide service with minimal impacts.





Thank You