



Law Enforcement Analytics Implementation  
Milwaukee County Sheriff's Office / IMSD



WebFocus LEA Business Intelligence Solution

Collaborative effort between;

- ~ Milwaukee County Sheriff's Office
- ~ IMSD
- ~ Information Builders

~ Law Enforcement Analytics Solution (LEA)

~ Implement an agency wide platform that delivers rich, interactive information to a wide range of command staff, deputies, and other employees via solutions such as dashboards, portable analytics, and true do-it-yourself ad hoc reporting.

# Project Participants



MCSO Project Lead – Capt. **Brian Barkow**

MCSO Technical Lead – Sgt. **Fernando Santiago**



IMSD Public Safety Business Development Lead – **Andrew Carrion**



Project Manager – Stan Cooper

Developer – Abdulah Nassim

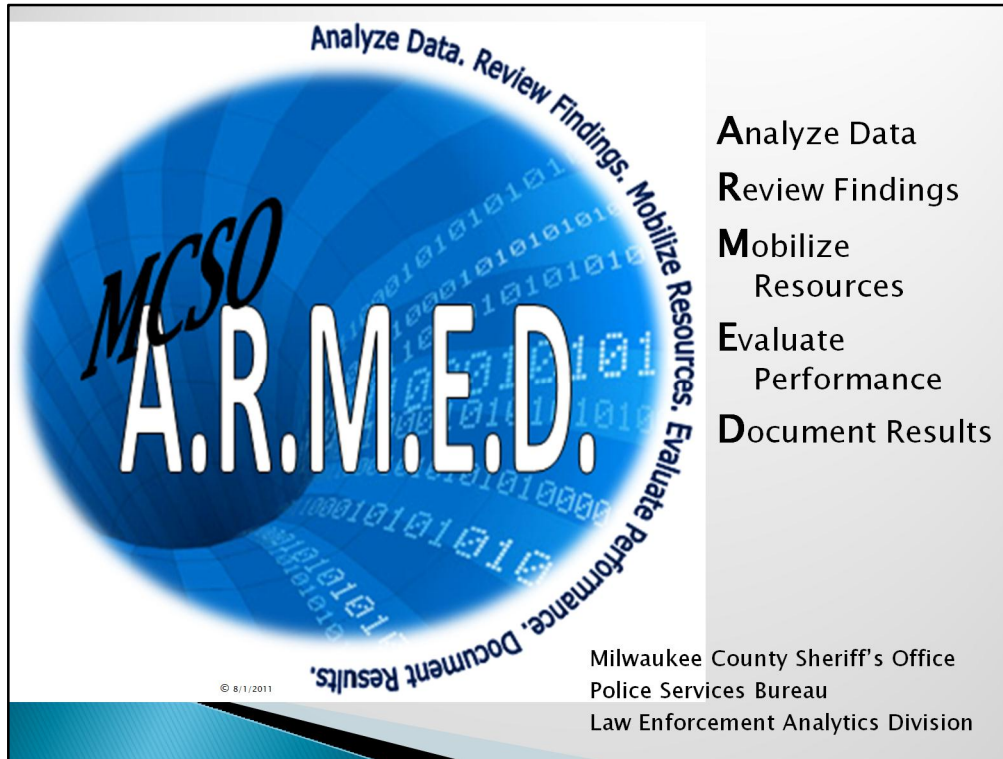
Developer – Tony Yoder

Collaborative project involving;

~ Milwaukee County Sheriff's Office

~ IMSD

~ Information Builders



Responsible for:

- “ leveraging technology to provide timely, targeted information related to crime patterns and trends.
- “ Provide actionable information and intelligence support to Sheriff operations
- “ Develop dashboards, reports, alerts, maps
- “ Further the goal of being a data driven organization

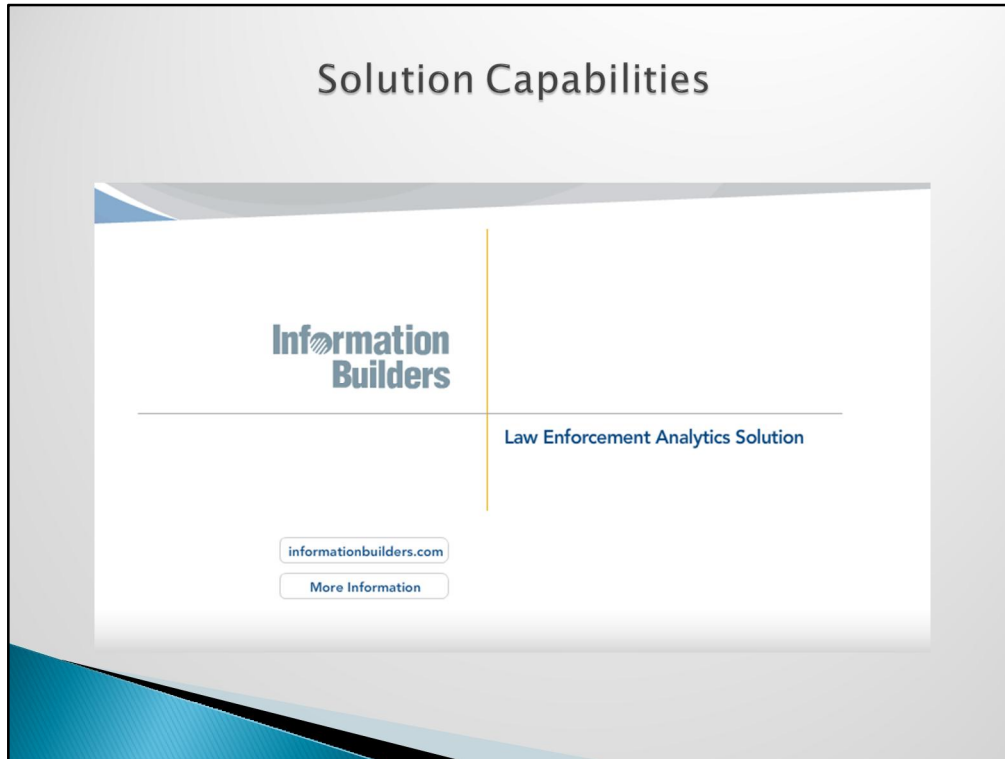
# Fighting Crime With Smart, Timely, and Thorough Data Analysis



To further the goal of being a data driven agency, the Sheriff desired a "Completely Integrated Business Intelligence System"

- " Reporting with multiple delivery formats
- " Custom Application
- " Dashboard
- " Maps
- " Analysis

## Solution Capabilities



The Law Enforcement Analytics Solution offered by Information Builders provided A “Completely Integrated Business Intelligence System” and was selected to meet The needs of the Sheriff’s Office.

WebFOCUS users don't need training and it is easy for developers to create and maintain the BI solutions.

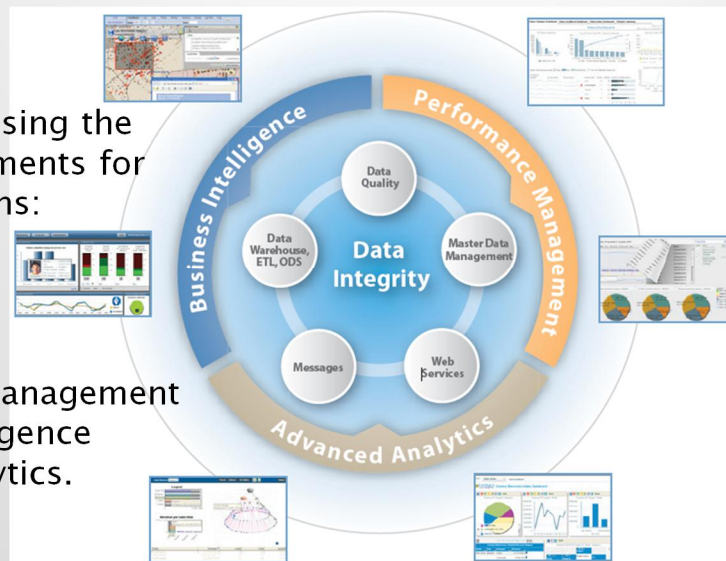
All levels of users who want access to raw data, can easily create their own reports and analysis using the latest technology for ribbon-based interfaces.

Every bit of content in WebFOCUS is shareable and reusable.

## WebFOCUS Dashboards, Scorecards, and Mashups

Visualize data using the four critical elements for smarter decisions:

- Data integrity
- Performance management
- Business intelligence
- Advanced analytics.



### A Comprehensive, Flexible Platform with cutting-edge features and capabilities

WebFOCUS integrates the four critical elements for smarter decisions:

- ~ Data integrity
- ~ Performance management
- ~ Business intelligence
- ~ Advanced analytics

#### Data Integrity

- ~ Includes a comprehensive data quality management to ensure data quality
- ~ Centralized data management to create a single source of validated data derived from disparate sources
- ~ Real-time extract, transform, and load (ETL) capabilities and full integration with real-time data adapters to ensure the timeliness of dashboard content

#### Performance Management

An out-of-the box solution for monitoring, tracking, and driving performance by communicating goals, measuring execution, and assessing enterprise risk.

#### Business Intelligence

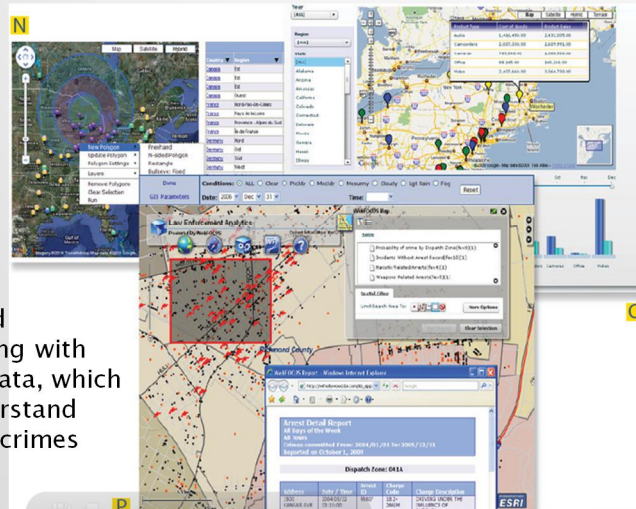
- ~ WebFOCUS helps all users make smarter decisions by delivering rich, real-time, consumable, interactive dashboards and reports to a wide audience.
- ~ WebFOCUS empowers analysts and decision makers with portable dashboards that use Active Technologies for offline analysis or with portable devices such as laptops, netbooks, smartphones, or PDAs
- ~ End users at any level can create their own dashboards, subscribe to existing ones, and schedule them for automatic e-mail delivery
- ~ WebFOCUS maximizes the communication and comprehension of information through data visualization and the ability to output dashboards in any format, such as Adobe Flex, Excel, Adobe PDF, and portable dashboards (with Active Technologies)

#### Advanced Analytics

- ~ Analysts have access to in-memory analytic dashboard tools offering cutting-edge visualization capabilities for intuitive visual-based OLAP and multivariate analysis, such as identifying key trends and root causes.
- ~ WebFOCUS Visual Discovery uniquely provides data-driven conditional formatting (also known as traffic lights or stop-lighting), where outliers are rendered visually without the need to create thresholds and conditions
- ~ WebFOCUS Visual Discovery visualizations, color coordination, and interactivity provides context-based analysis so users can drill down while simultaneously viewing higher-level data
- ~ In-memory capabilities leverage the 64-bit architecture of desktop computers to represent more than 100 million rows of data in interactive visual displays

## Location Intelligence and Geographic Information Systems

Integrates GIS and predictive modeling with real-time crime data, which helps users understand when and where crimes may occur



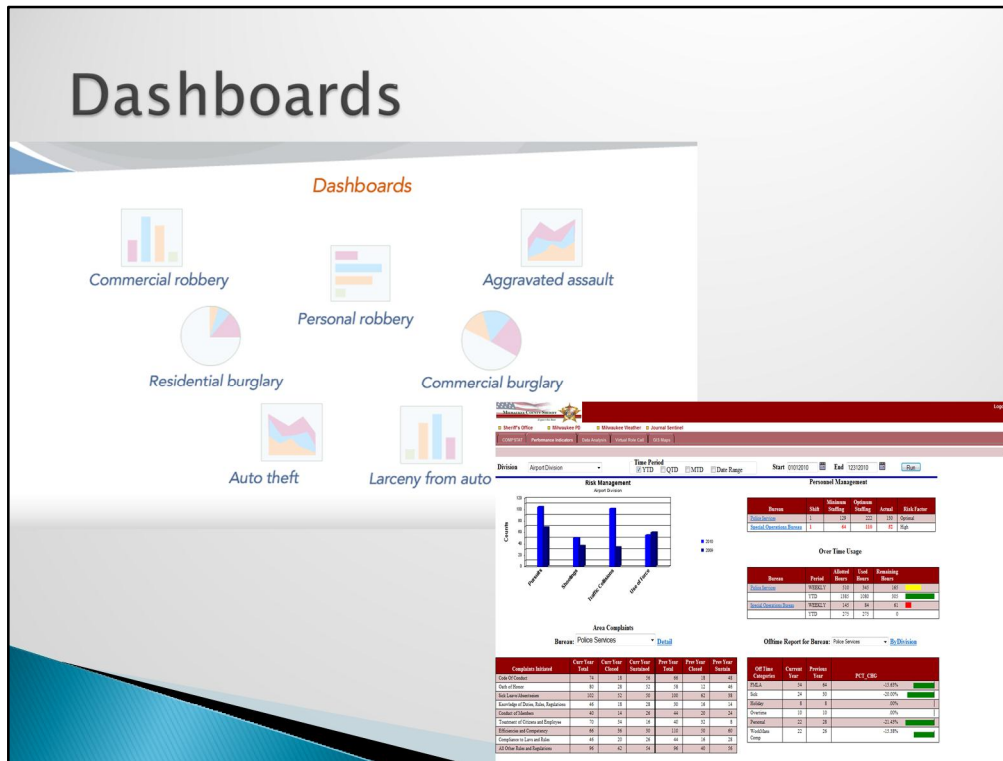
“ Solution integrates WebFOCUS and leading mapping solutions from ESRI, Google, and Adobe Flex.

“ Lets users more intuitively process and comprehend spatially oriented data to better visualize and understand information so they can more rapidly discern critical patterns and trends.

“ Aggregate real-time information from disparate databases and spreadsheets

“ build individual ad hoc queries and formatted reports, and instantly transform the results into compelling geographic maps.

# Dashboards



Dashboards can be deployed in any format – including HTML, Adobe PDF, Flash, and Excel – and can be accessed on any device – from desktops to laptops to smartphones.

Dashboards can also be distributed dynamically via e-mail, to printers, Web portals, or report archives – at schedule-driven intervals or when critical business events occur.

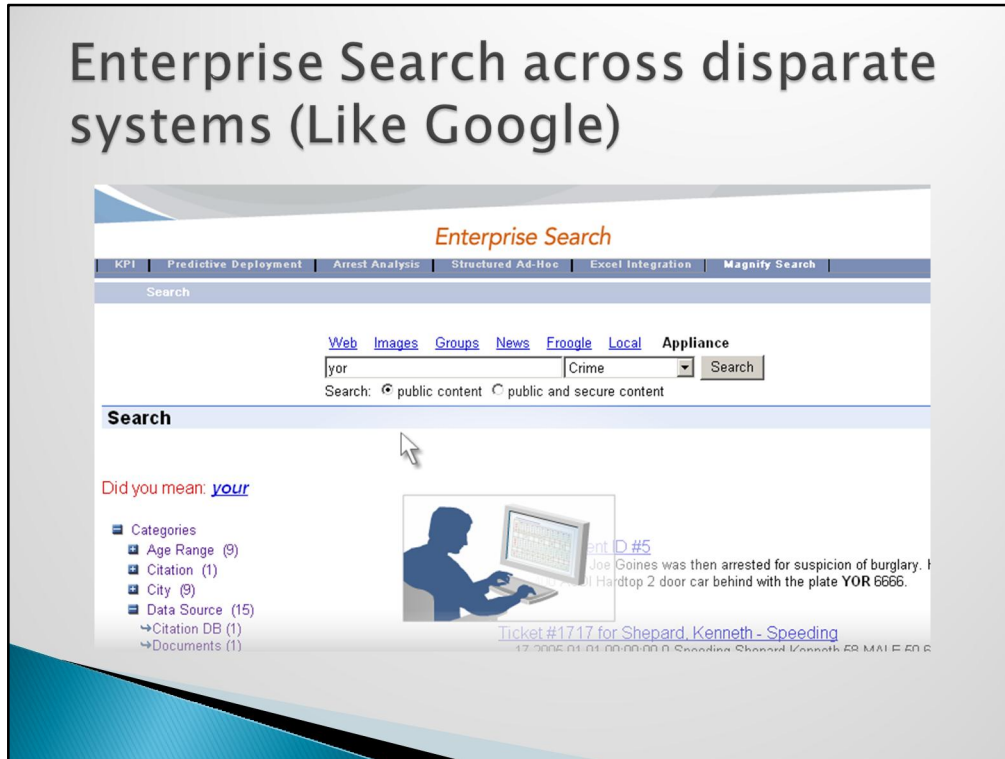
Dashboards allow organizations to define, share, and monitor crucial metrics and performance indicators across all levels of the business.

Fully customizable according to user roles, dashboards enable executives to obtain a high-level view of broad-reaching strategies, while line-of-business managers can track the day-to-day tactical activities that link to those strategies.

This allows everyone to actively participate in corporate performance monitoring, ensuring that all projects or initiatives are fully aligned and that all goals are being reached.



# Enterprise Search across disparate systems (Like Google)



Enterprise information can often be extremely difficult to retrieve.

With WebFOCUS Magnify, any structured or unstructured data, regardless of its source or location, is easy to index and search. Magnify allows users to leverage a familiar and intuitive Google-like interface to instantly access detailed records, unstructured documents, aggregate summaries, and more.

Example:

1. Search multiple systems based on specific text such as red bird tattoo. This will return results where "Red Bird" was entered in any text field or written report and present those results to the user for review
2. Retrieve all contacts the department has had with an individual across multiple systems to aid in investigations (warrants, civil papers, witness, victim, offender, tickets, accident, arrest, mugshots, etc...)

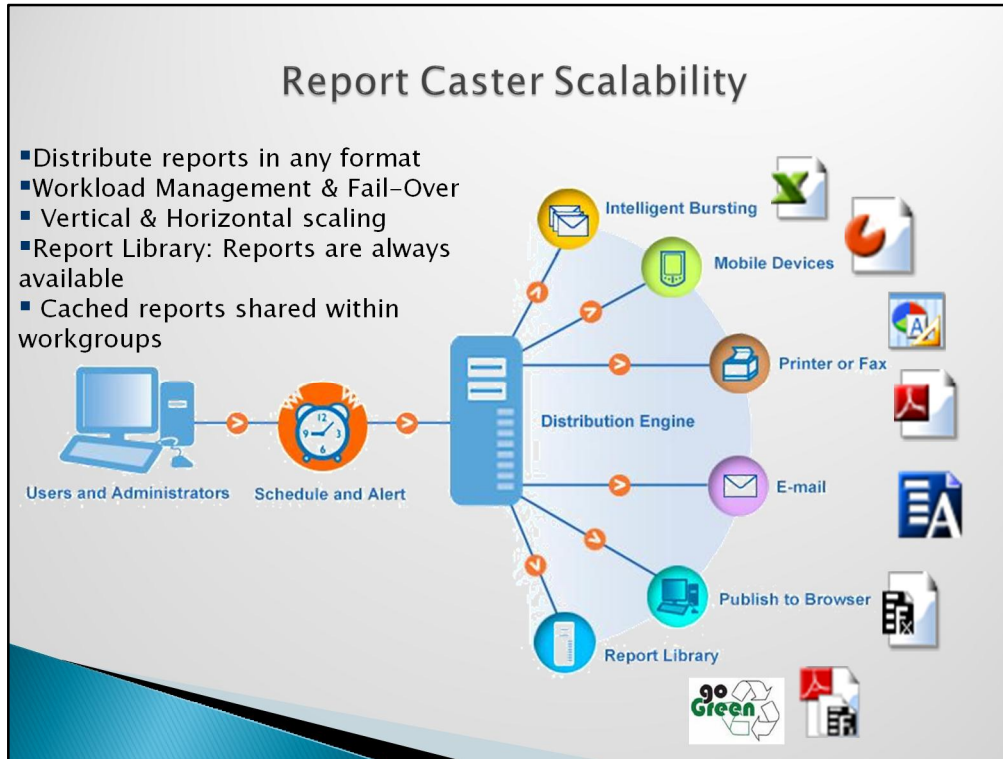
# Easy Ad Hoc Reporting



## Ad Hoc Dashboards

“ WebFOCUS InfoAssist gives users greater control over their content with comprehensive ad hoc reporting, querying, and cube-browsing capabilities.

“ Dashboards can be constructed from any data source, and output in a variety of formats including Active Dashboards, Excel, PowerPoint, and Adobe PDF, Flash, and Flex PDF.



Scheduling and distribution capabilities for delivery via e-mail, to a report archive, printer, or FTP site.

Report distribution is arguably one of today's most critical business tasks.

Companies are inundated with data, an ever-growing glut of documentation, which they must be able to easily distribute to anyone, anywhere, at any time, and in any format.

The WebFOCUS report distribution solution meets these enterprise challenges through dynamic delivery and storage of vital business intelligence (BI) information.

- “ Robust information management features,
- “ A complete, just-in-time business report distribution platform.
- “ A single point of control for real-time alerts, scheduling, and storing information
- “ distributing it to anyone within or outside the organization.

## Other Law Enforcement Agencies



The WebFocus and LEA customers with similar solutions

- ~ Milwaukee County Office of the Sheriff
- ~ Houston PD
- ~ Charlotte Mecklenburg PD
- ~ Michigan State Police
- ~ Jacksonville Office of the Sheriff
- ~ Erlanger Kentucky PD
- ~ Irving PD
- ~ Richmond Virginia PD
- ~ ???

## Objectives

- ▶ Significantly Enhance Operational Efficiencies
- ▶ Aid Officers in Devising Strategies and Tactics
- ▶ Improve Officer Safety
- ▶ Reduce Crime
- ▶ Improve Quality of Life In Service Areas
- ▶ Visualization of Incidents, Patterns, and Trends.

### **Significantly Enhance Operational Efficiencies**

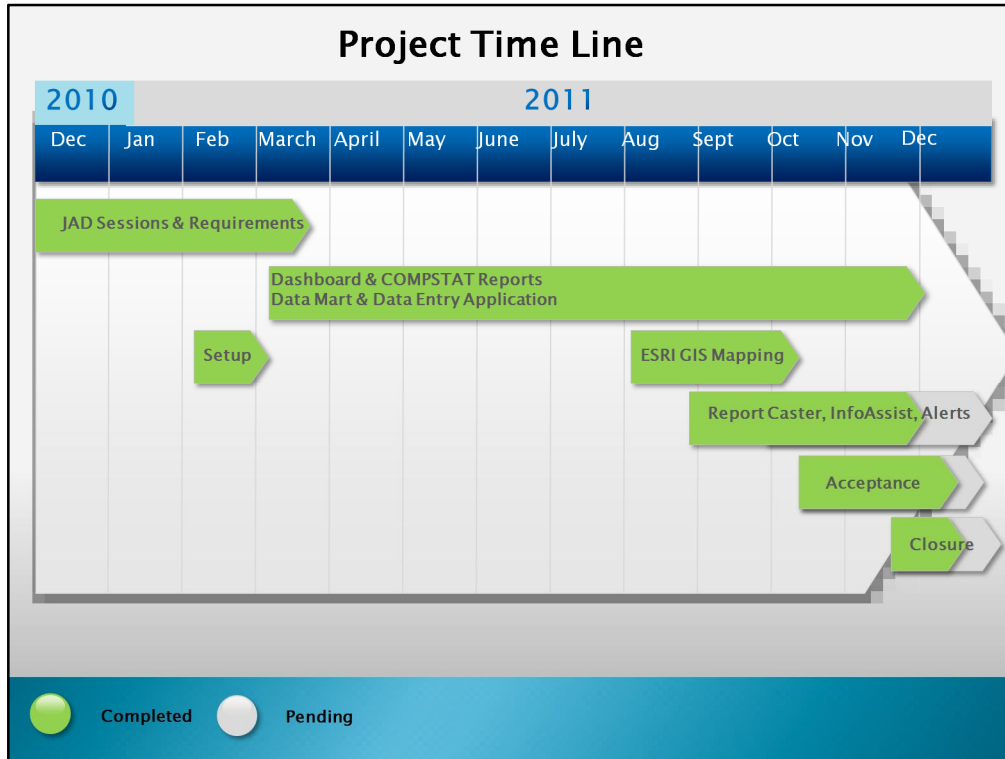
Automate CompStat Reporting Process  
Command Staff resources focus on analyzing operations  
Improving Quality and Timeliness of Information  
Eliminating Outmoded and Redundant Operations

### **Aid Officers in Devising Strategies and Tactics**

Information Alerts and Triggers  
Enable enterprise wide information access

### **Reduce Crime**

Quickly recognize important trends  
Decisions based on current and credible information  
Provide actionable information



December 2010 – Finalized project plan and prioritization

January 2011 – JAD sessions with all divisions to gather reporting requirements  
Setup of technical environment

March 2011 – Started Dashboard and CompStat report development  
Developed flexible web-based data entry application

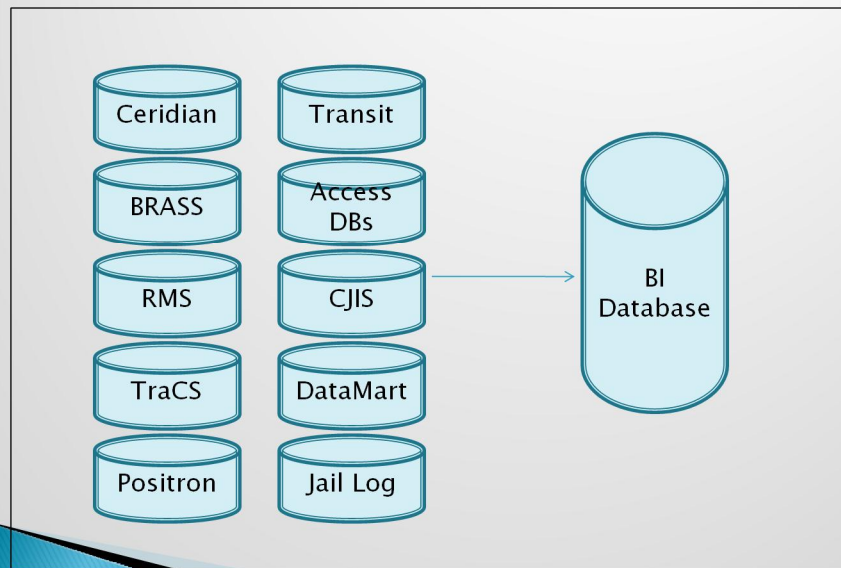
August 2011 – Integrated ESRI GIS Mapping to visually represent accidents, citation, incidents

September 2011 – Implemented ad hoc reporting tools, report distribution, and alerts

October 2011 – Continued working on reports, started acceptance process

December 2011 – Started project closure process, transition to internal staff

## Operation Data Stores



Multiple data stores all accessed through a single BI Database using views and stored procedures.

“ Simplifies data management and decouples report from its data source.

“ Place to store data that requires transformation or snapshots in time

“ Alter data source in a single location rather than touching each report

## Data Entry App and Report Packages

- ▶ Created custom form-based **data entry web application** to electronically capture data and statistics, facilitating real time data entry
- ▶ Built 12 **Command Level Report Packages** to Support Briefings and Weekly CompStat Sessions
- ▶ Developed **GIS based maps** to visually represent incident, accident, and citation locations

Data Entry Application allows for the customized creation of form templates, with user defined fields, data types, drop down values for the purpose of eliminating paper processes.

Each report package consists of multiple reports, charts, and maps which are then presented through a dashboard.

Collaborated with the county GIS department to leverage existing ESRI GIS tools and service to create the presentation layer



## Key Tools

- ▶ **WebFocus Managed Reporting** is a complete web-ready enterprise data access and reporting system
- ▶ **InfoAssist**, which is a powerful report generation tool that enables business users to leverage state of the art ad hoc functionality
- ▶ **Active Report technology** that is designed for offline analysis and allows for filtering, sorting, charting and much more
- ▶ **Dashboard** integrates the reporting environment into one user-friendly interface, allowing for personalized portal analytical tools, drill downs

The tools discussed are currently licenses to the Milwaukee County Sheriff's Office, but special license pricing has been pre-negotiated to allow any other county department or municipality to utilize a county hosted WebFocus server.

Currently just scratching the surface of many of the capabilities of these tools.

## Key Tools

- ▶ **Report Caster** scheduling and distribution application that centralizes the execution and distribution of WebFocus reports
- ▶ **Magnify** to search structure and unstructured content across multiple data sources and systems
- ▶ **Adapters** to consume data from any data source in the county
- ▶ **Visual Discovery**, advanced data visualization for executive level dashboards
- ▶ **Other tools** include report assistant, charting tool, two-way email, mobile support

## Opportunities

- **Expand use** to other county departments and municipalities
- **Leverage investment** and build on experience and lessons learned
- **Provide insight** into performance to facilitate better decision making
- **Empower** the county by linking core operations directly to strategic objectives and real time monitoring

“ Shared licensing will allow other departments and municipalities to leverage the benefits of business intelligence at a fraction of the cost.

“ Share existing LEA solution with minor alterations

“ Reaching out to other police agencies to demo solution and gauge interest to participate

“ County hosted model (4-Core Server) means lower initial cost, leverage county IT services, quick deployment, centralized management, timely software updates, re-use of already developed solutions.

## Opportunities

- **Unprecedented, controlled access** to system data
- **Integration** with existing desktop tools like Excel and Adobe PDF
- **Accurate, timely, and interactive information** – right at the fingertips of any user that needs it. This is the key to ensuring success at all levels

# Questions



Captain **Brian Barkow**



IMSD Public Safety Business Lead  
**Andrew Carrion**

# Report Examples

For Reference Only



## Milwaukee County Sheriff's Office Dashboard

Development

[Sheriff's Office](#)
[DataMart Main Page](#)
[Milwaukee PD](#)
[Milwaukee Weather](#)
[Wall Street Journal](#)

[DSB Compstat](#)
[DSB Inmate Population](#)
[DSB Inmate Status](#)
[DSB Offtime Summary](#)
[Performance Indicators](#)

### Compstat

Compstat Report

Correctional Facility Central

Period

2011

2011/11/13 - 2011/12/10

Report Output



### COMPSTAT Milwaukee County Detention Services Bureau (Central) 11/13/2011 -12/10/2011



	11/13/2011 TO 12/10/2011	10/16/2011 TO 11/12/2011	% Change	10/16/2011 TO 11/12/2011	9/18/2011 TO 10/15/2011	% Change	YTD 2011	YTD 2010	% Change	YTD 2011	YTD 2009	% Change
<b>Criminal</b>												
Assault	0	1	-100%	1	2	-50%	49	49	0%	49	77	-36%
Death Investigation	0	0	0%	0	0	0%	13	10	30%	13	9	44%
Narcotics	0	0	0%	0	0	0%	6	11	-45%	6	12	-50%
Weapons	0	0	0%	0	4	-100%	11	23	-52%	11	18	-39%
<b>Disturbance</b>												
Fight	0	0	0%	0	0	0%	32	38	-16%	32	64	-50%
Crimes vs. person	0	7	-100%	7	12	-42%	99	61	62%	99	94	5%

# Drill Down Reports

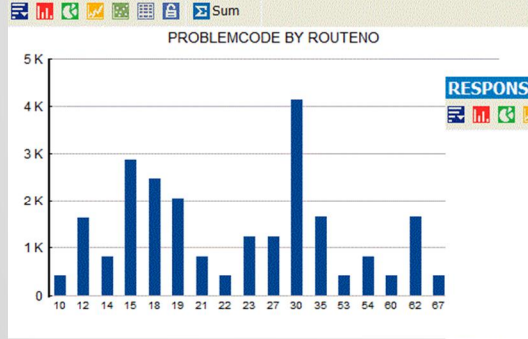
INCIDENTS	INCIDENTNO	ORIGDATE	PROBLEMCODE	MAINCATDESCRIP	SUBCATDESCRIP	RESPONSETYPE	ROUTENO	BUSNO
Disorderly Conduct	4092598	2010/11/14 00:00:00.000			Off Bus	S	15	4419
	4111343	2010/11/15 00:00:00.000			Intoxicated Person(s)	S	19	4432
	4112000	2010/11/15 00:00:00.000			Vulgar Language	S	12	4334
	4116660	2010/11/16 00:00:00.000			Off Bus	S	23	4825
	4128609	2010/11/16 00:00:00.000			Intoxicated Person(s)	S	15	4627
	4128673	2010/11/16 00:00:00.000					30	5003
	4161510	2010/11/18 00:00:00.000					18	4634
	4161743	2010/11/18 00:00:00.000					18	4634
	4162908	2010/11/18 00:00:00.000					62	4729
	4165344	2010/11/18 00:00:00.000					10	4710
	4167716	2010/11/18 00:00:00.000					80	4419
	4177069	2010/11/19 00:00:00.000					27	4734
	4177941	2010/11/19 00:00:00.000					53	4119
	4187986	2010/11/20 00:00:00.000					15	5148
	4193036	2010/11/20 00:00:00.000					76	4708
	4198070	2010/11/21 00:00:00.000					22	5109
	4200063	2010/11/21 00:00:00.000					22	5103
	4200090	2010/11/21 00:00:00.000					22	5103
	4202890	2010/11/21 00:00:00.000					60	4463
	4221836	2010/11/22 00:00:00.000					30	4387
	4235404	2010/11/23 00:00:00.000					53	4406
	4235920	2010/11/23 00:00:00.000					60	5129
	4260599	2010/11/24 00:00:00.000					12	4334
	4263724	2010/11/24 00:00:00.000					21	4817
	4268381	2010/11/25 00:00:00.000					7700	917



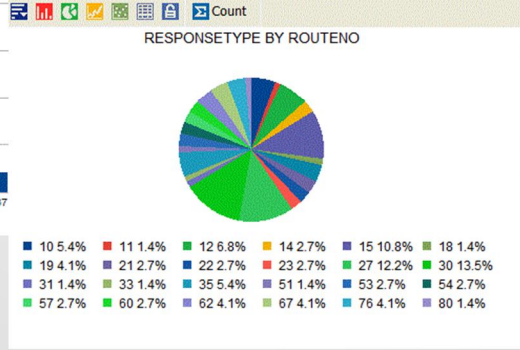
# Active Reports

## Generate Graphs and Reports Which Can Be Emailed

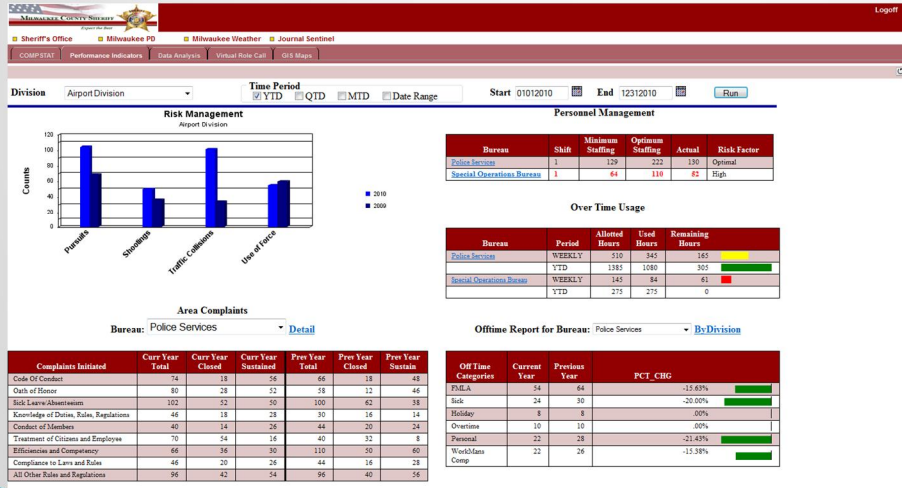
PROBLEMCODE BY ROUTENO



RESPONSETYPE BY ROUTENO



# Performance Indicators Report



# Performance Indicators – Pay

Sheiff's Organization      Pay Types      Report Format

4002 Administration      2A-HOL ACCRUED  
 4010 Emergency Mgmt Bure      2H-HOL PAID  
 4016 Airport Security      2U-HOL USED  
 4017 County Grounds Secur      3F-FMLA WRK WOP  
 4018 Canine Unit      3H-FMLA HOLIDAY

HTML      PDF  
 Excel 2000      HTML Active Report      Run

20 of 20 records, Page 1 of 1

Offline Report for Selected Pay Type

Organization	Pay Year	Pay Code	Hours
4016 Airport Security	2008	2A	3186.20
		2H	1195.80
		2U	2421.30
		3F	403.80
*TOTAL 2008			
	2009	2A	2842.00
		2H	1110.00
		2U	2520.10
		3F	25.90
*TOTAL 2009			
	2010	2A	6570.00
		2H	3416.10
		2U	1022.90
			2206.70

Pay Code BY Pay Code

Group By (X)  
 HIGHORG  
 LOWORG  
 Organization  
 Pay Year  
 Pay Code  
 Pay Description  
 Hours

2H 20%    2U 20%    3F 15%    3H 25%

Types Showing Active Report With Pie Chart Reports output into HTML, Excel, PDF or Active Report

# Overtime and Off Time Reports

## With graphic indicators

Risk Analysis | Offtime & Over Time

Period: 2011-09 | Organization: ALL | Run

**OverTime**  
All Organizations

Organization	Period Hours 2011-09	Period Dollars 2011-09	YTD Hours 2011-09	YTD Dollars 2011-09	Budget Dollars 2011	Remaining Dollars 2011
4082 Central Records	12	\$331.34	13	\$355.98	\$0.00	-\$355.98
4002 Administration	85	\$1,652.14	849	\$15,552.09	\$43,992.00	\$28,439.91
4010 Emergency Mgmt Bureau	73	\$1,233.49	297	\$5,410.85	\$14,172.00	\$9,761.15
4016 Airport Security	518	\$10,092.95	3378	\$76,499.81	\$385,620.00	\$289,120.19
4017 County Grounds Security	58	\$2,452.19	574	\$18,038.53	\$80,652.00	\$62,613.47
4018 Canine Unit	34	\$1,481.41	288	\$9,699.17	\$36,660.00	\$26,960.83
4019 Park Patrol	179	\$4,447.35	1524	\$43,718.19	\$300,812.00	\$256,893.81
4021 Expressway Patrol	731	\$21,676.32	5445	\$165,289.99	\$249,288.00	\$83,998.01
4029 Communications	86	\$2,036.59	686	\$13,342.63	\$70,392.00	\$57,049.37
4030 Community Relations	0	\$0.00	79	\$1,679.96	\$43,020.00	\$41,340.04
4036 Inmate Transportation	7	\$41.79	217	\$5,172.96	\$0.00	-\$5,172.96
4038 Criminal Justice Center	1784	\$47,159.51	16517	\$434,810.71	\$730,776.00	\$295,965.29
4039 Medical Unit	170	\$7,273.61	982	\$37,673.73	\$53,772.00	\$16,098.27
4041 Psychiatric Services	0	\$0.00	26	\$1,050.50	\$4,404.00	\$3,353.50

**Off Time Report**  
All Organizations

Pay Category	YTD 2011-09	YTD 2010-09	Percent Change
FMLA	2463	1360	81.10%
Holiday	1526	1416	7.77%
Overtime	4873	3002	62.33%
Personal	847	749	13.08%
Sick	701	1031	-32.01%
WorkMans Comp	496	455	9.01%

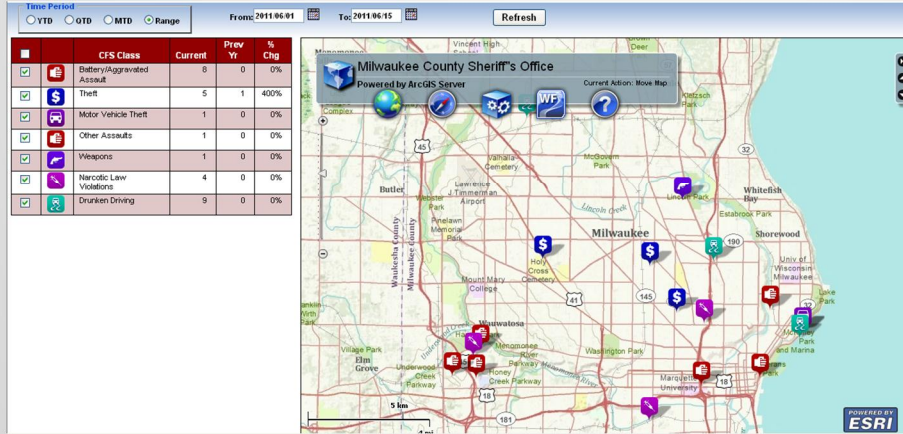
# Risk Management Report

Risk Management Report  
 Bureau: Police Services  
 Airport Division

Unit	Risk Management	Current Year	Last Year	Percent Change
Unit 1	Pursuits	34	45	-24.44%
	Use of Force	33	16	106.25%
	Traffic Collisions	22	12	83.33%
	Shootings	11	11	.00%
Unit 2	Pursuits	56	11	409.09%
	Use of Force	11	23	-52.17%
	Traffic Collisions	56	11	409.09%
	Shootings	33	21	57.14%
Unit 3	Pursuits	14	13	7.69%
	Use of Force	11	21	-47.62%
	Traffic Collisions	23	11	109.09%
	Shootings	6	4	50.00%
*TOTAL RISK_MGMT RISK_MGMT DIVISION Airport Division		**	**	55.78%

Run Date: July 28, 2011

# Incident Calls For Service Interactive Mapping



# Drill Down From Map to Incident Report in RMS

The screenshot displays a web-based dashboard for the Milwaukee County Sheriff's Office. At the top, there's a navigation bar with various menu items like 'Sheriff's Office', 'Milwaukee PD', and 'Milwaukee Weather'. Below this is a table showing CFS Class performance metrics:

CFS Class	Current	Prev	% Chg
Subst/Property related Assault	8	0	0%
Theft	5	1	400%

To the right of the table is a map of Milwaukee with several red markers indicating incident locations. A pop-up window shows the details of an incident:

**Milw Cnty Sheriff's Office Incident Report**

**Theft-From Auto**

Incident Report Number: 11-004073  
 Between Date/Time: 6/9/11 20:19  
 Arrive Date/Time: 6/9/11 21:54

6901 W Vienna Ave, Milwaukee, WI, 53216

CFS Code - 1: 2305  
 CFS Code - 2: 2914  
 CFS Code - 3: [blank]  
 CFS Code - 4: [blank]  
 CFS Code - 5: [blank]  
 CFS Code - 6: [blank]  
 CFS Code - 7: [blank]  
 CFS Code - 8: [blank]

Officer: Demetra Dashunka Kirshia  
 DOB: 09/11/1973  
 Race/Etn: B/P  
 Home Phone Number: (414) 379-3149  
 Cell Phone Number: [blank]

Address (Address, City, State, Zip): 5662 N 35th St, Milwaukee, WI, 53209

**SUMMARY**  
 Criminal Damage To Property/Theft From Auto---Dinsen Park

View Existing Form Data

Data Form Contents

add new save return insert

Inmate  
Grievance  
Form-  
CCFC

FILE# 0			
Last Name	First Name	M.I.	Date of Birth
Sex M	Race W	Pod Cell	Today's Date
This Grievance Concerns Inmate Health/Welfare			
Have you tried to solve this problem by speaking w Yes			
Describe the problem			
Inmate's Signature			
Your grievance has been received, and will be inve			
Received By	Date	Time 0	

add new save return insert



# Data Analysis

Incidents from the RMS system for the last 7 days

Milwaukee County Sheriff's Office Dashboard

Incident Report for last 7 days  
Run Date: March 14, 2011

CASENO	INCIDENT	REPORTD	CRPFD	OFFICER	ACTIVITYTYPE	OFFICER	RANK	RPTSTATUS	CF CODE	FORCLOSED	
201101466	11171000711446	11171000711446	11170000001295	McCam, Dep Craig A.	AC	Worren, Deputy Eric B.	20110225	D1	5	A725	N
					RD	McCam, Deputy Craig A.	20110225	D1	5	A725	N
					SO	Adcock, Tony	20110225	D1	5	A725	N
201101466	111710007113978	11171000711398	11171000577809	O'Gun, CO Christopher J.	RUB	Thomas, Eric S.	20110225	D1	5	A725	N
					SV	Mulkey, Sergeant Celeste D.	20110225	D1	5	A725	N
					ACD	Schoon, CO Kevin	20110225	CO	2	J303	N
					ACD	Stewart, CO Howard	20110225	CO	2	J303	N
					CO	O'Gun, CO Christopher J.	20110225	CO	2	J303	N
					RM	Campbell, Terrence Rudolph	20110225	CO	2	J303	N
201101466	111710007114239	111710000001215	Crespo, Dep Reynaldo	O	George, Steven D.	20110225	CO	2	J303	N	
				SV	Hernandez, Lieutenant Jose	20110225	CO	2	J303	N	
				ACD	Vance, CO Jaime	20110225	DB	5			
				ACD	Finley, CO Melvin	20110225	DB	5			
				ACD	Triggs, CO Jerald R.	20110225	DB	5			
				ACD	Baker, CO Pamela	20110225	DB	5			
				AD	Crespo, Deputy Reynaldo	20110225	DB	5			
				RM	Wilder, Jehmyl	20110225	DB	5			
				RCD	Leete, CO Matthew S.	20110225	DB	5			
				SV	Zebuch, Captain Peter R.	20110225	DB	5			
				SV	Grabar, Sergeant Richard P.	20110225	DB	5			
				SV	Nivotny, Sergeant James J.	20110225	DB	5			
SV	Colman, Sergeant Gary A.	20110225	DB	5							
SV	Dwan, Sergeant Kyle C.	20110225	DB	5							
SV	Nykwisz, Dep Inspector Kevin	20110225	DB	5							
ACD	Baker, CO Pamela	20110225	DB	5							
ACD	Vance, CO Jaime	20110225	CO	5							
ACD	Finley, CO Melvin	20110225	CO	5							
ACD	Triggs, CO Jerald R.	20110225	CO	5							
ACD	Baker, CO Pamela	20110225	CO	5							
AD	Crespo, Deputy Reynaldo	20110225	CO	5							
RM	Wilder, Jehmyl	20110225	CO	5							