

Investing in Justice: Courthouse Complex Update

June 2025



Agenda

- Project Foundation
- Updates
 - Stakeholder Engagement
 - Justice Policy & Programs
 - Funding & Finance
 - Design & Construction
- Closing

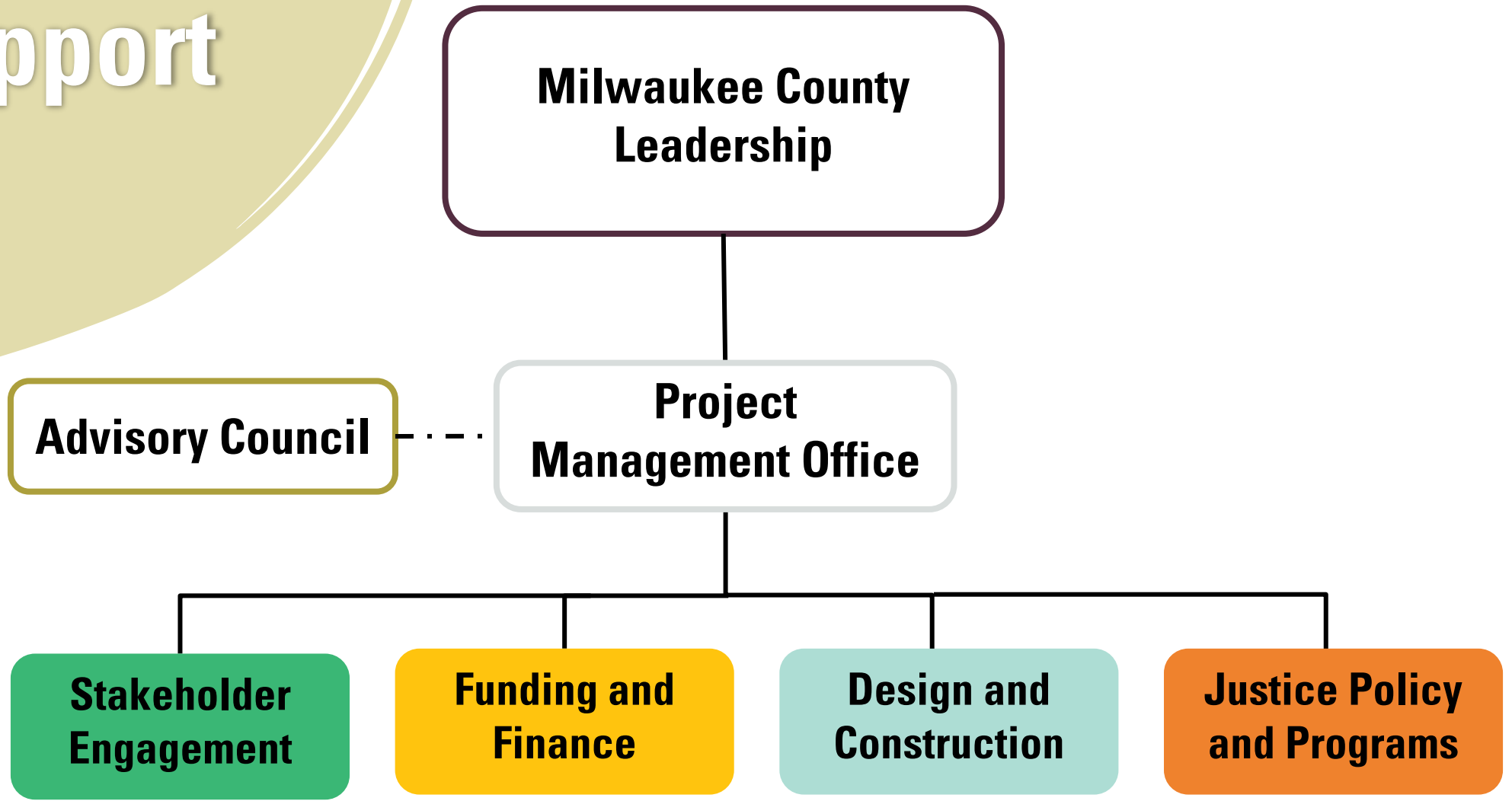
Our Commitment: Vision & Mission

WE ENVISION... A welcoming and adaptable Courthouse Complex that embodies justice, equity, safety, and community well-being and addresses the holistic needs of the public, systems-involved individuals, and staff now and in the future.

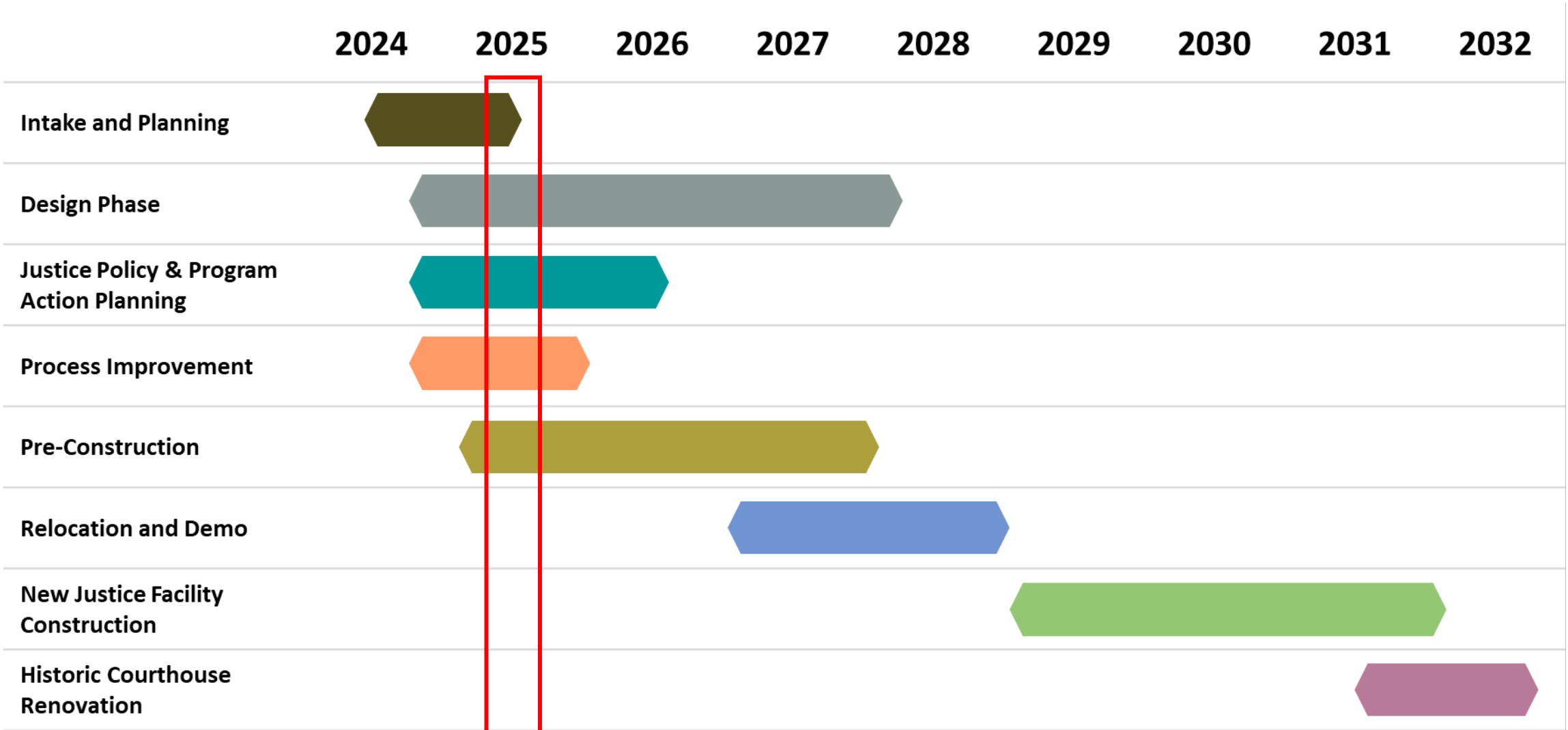
PROJECT MISSION

Our mission is to create welcoming Courthouse Complex facilities that prioritize equity and the needs of the Milwaukee community. We will do this by fostering safety, accessibility, efficiency, and restorative practices through an adaptable design that is informed by stakeholder engagement and accommodates state-mandated services and comprehensive resources that uphold justice and fairness for everyone.

Structure of Support



Project Timeline



Stakeholder Engagement



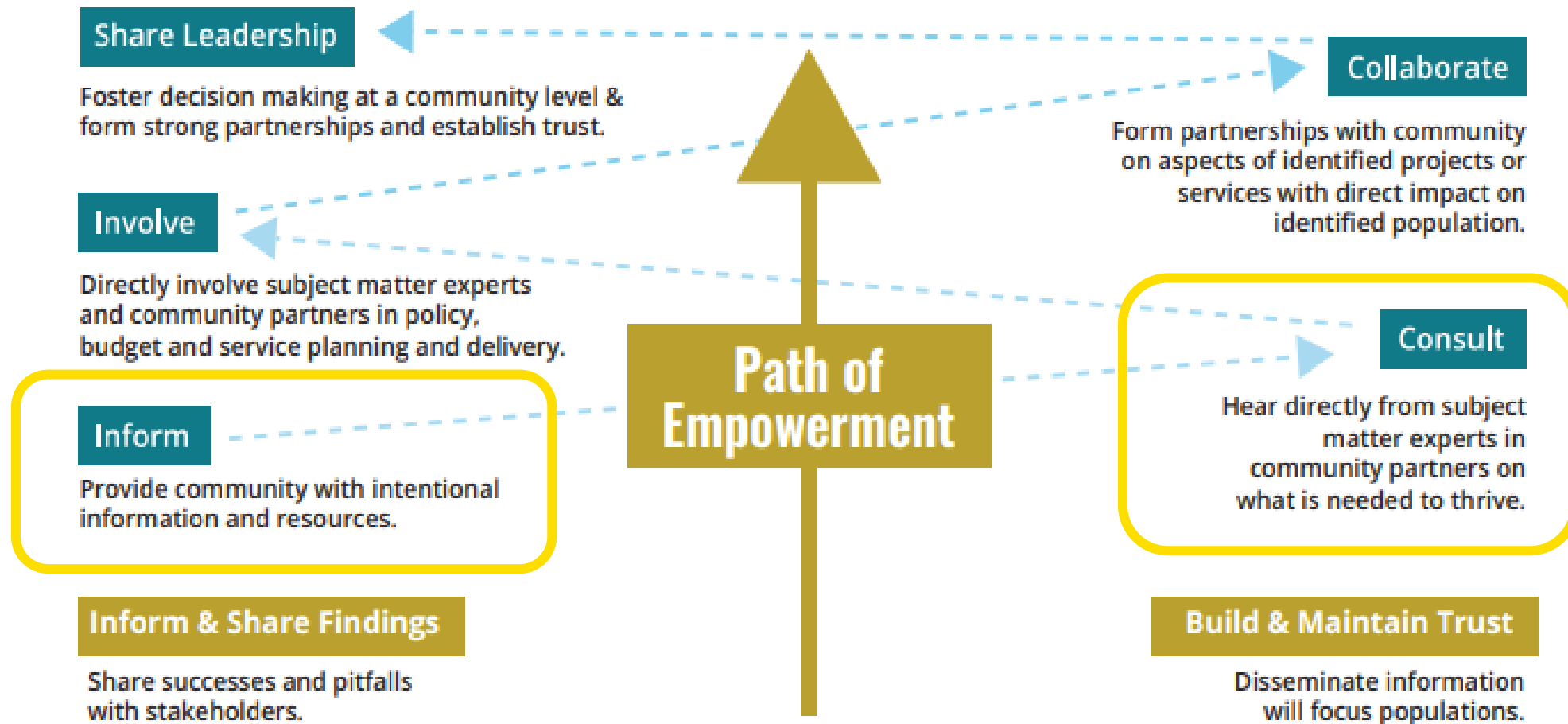
**MILWAUKEE
COUNTY**

Community Engagement



Stakeholder Engagement
Elevate community and user perspectives and lead communications

Office of Equity's (OOE's) Community Engagement Framework



Community Engagement



Stakeholder Engagement

Elevate community and user perspectives and lead communications

RECENT ACTIVITIES

Hosted three community listening sessions and was the topic for March's Community Brainstorm

- Focused on User Experience: navigation, service linkages, general amenities
- Main take away: Centering of mental health in the design and service linkages

UPCOMING ACTIVITIES

- Outreach to attend existing community meetings and events, including those potentially in other municipalities
- Consider gathering public feedback in the courthouse using QR codes



Tour Updates



Stakeholder Engagement

Elevate community and user perspectives and lead communications

TOUR ATTENDEES AND SCHEDULE

Completed tours – 150 attendees

- Democrats and Republican Legislators
- Community Groups
- Local Police Chiefs
- Board of Supervisors
- Local mayors and village presidents
- Media

TOUR FORMAT

- **Presentation**
- **6th floor of Historic Courthouse**
- **Route to jail**
- **Courtroom tour in safety building**
- **Return to Historic Courthouse**



Justice Policy & Programs



April 10th Workshop Update



**Justice Policy
and Programs**

Prioritize and lead
improvement efforts in
the justice system

OBJECTIVE: To bring together justice system and community leaders to foster dialogue, build mutual understanding, and collaboratively identify priority areas for meaningful change within the justice system.



Next Steps



Justice Policy and Programs

Prioritize and lead
improvement efforts in
the justice system

- Interviews with justice system and community leaders continue. Themes from the interviews:
 - Collaboration across the system
 - Praise for people who work in the system
- Survey has been sent out to capture feedback from: Judges, Clerks, Court Reporters, Bailiffs, Public Defenders, and Public
- Final report identifying priority areas for the justice system and action steps will be complete in June 2025



Funding and Finance



MILWAUKEE
COUNTY

Financial Status



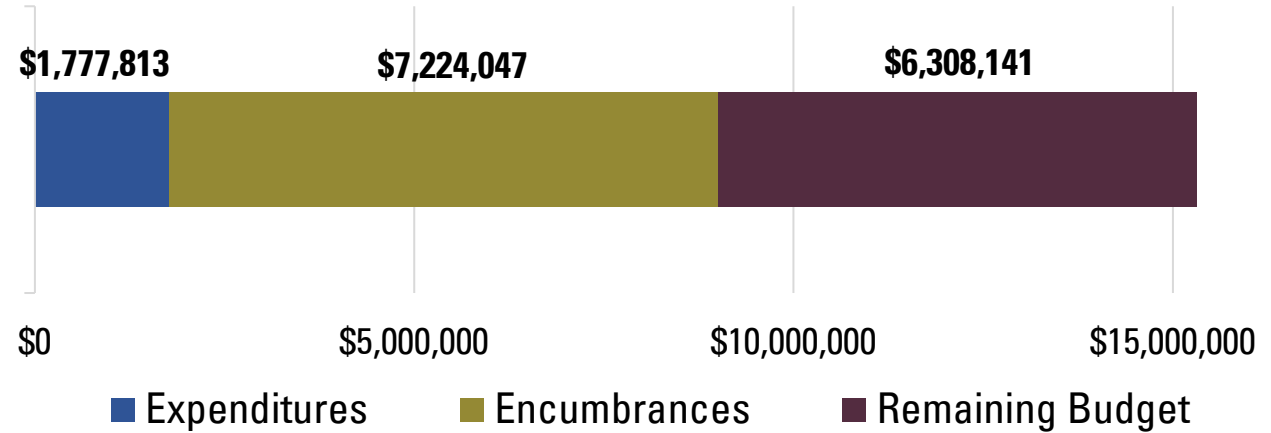
Funding and Finance

Secure, monitor and report on project funds

Courthouse Complex Planning

FY24/FY25 Budget: **\$15,310,000**

Project: WC0276011



Existing and Anticipated Encumbrances

FY24 & FY25 Contracts : \$9.3M

- Concord (owners rep)
- AECOM (design consultant)
- HGA (energy systems consultant)
- Mueller Communications (advocacy/communications)
- National Center for State Courts (justice policy & programs)
- Capstone (lobbying)
- Construction Manager (selection made recently, currently negotiating contract terms)

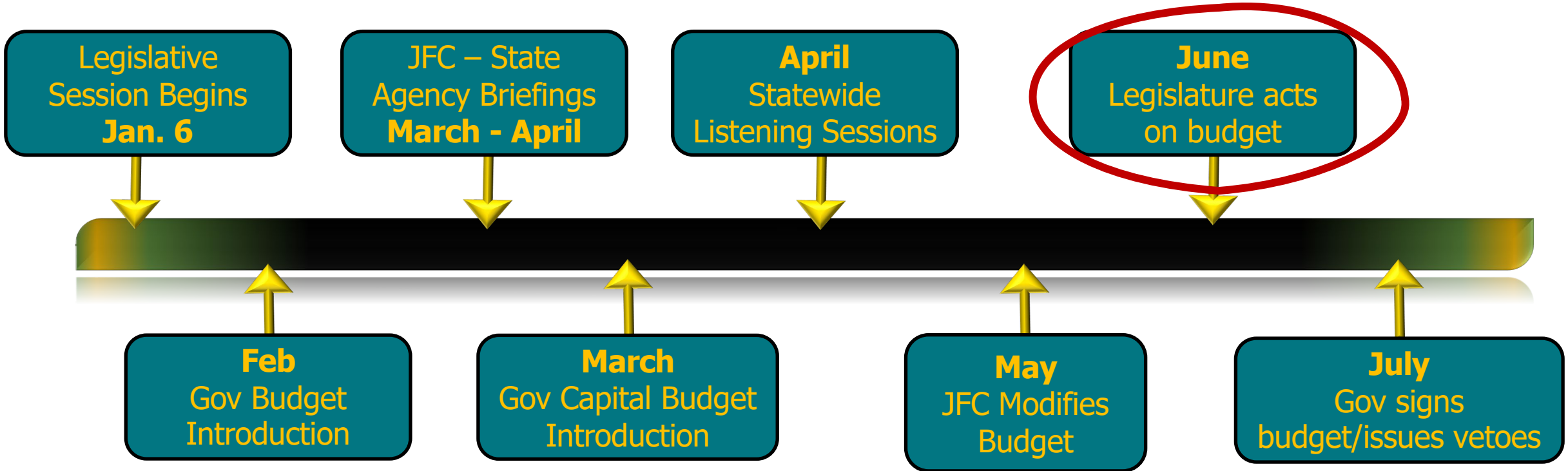


LEGISLATIVE TIMELINE



Funding and Finance

Secure, monitor and report on project funds



Funding Requests



Funding and Finance

Secure, monitor and report on project funds

STATE BUDGET PROCESS

- Governor budget released in February and included \$25M for IJCC
- Multiple meetings with legislators on key committees
- Discussions on funding mechanisms remain dynamic

CONGRESSIONALLY DIRECTED SPENDING

- Requested \$6M (max) through U.S. Senate and House delegation

MILWAUKEE COUNTY CAPITAL BUDGET PROCESS

- A 2026 capital request for the continuation of the design process is dependent on state support

State Mandates

Counties are an arm of state government and required (mandated) to provide services on behalf of the state.

- Milwaukee County must provide these services no matter the level of reimbursement it receives from the state.
- Milwaukee County is treated differently from the other 71 counties in the state:
 - Milwaukee County is the only county required to patrol the expressway
 - Milwaukee County is the only county with both a jail and a Community Reintegration Center (formerly House of Corrections)



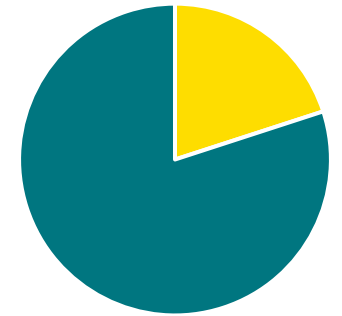
Unique State Mandates

80% of our local levy is spent on delivering state services.

Milwaukee is the only County:

- Required to provide highway patrol services (Cost \$16M in 2025, \$12.2M from the County)
- That operates a jail and Community Reintegration Center (House of Corrections) and by partnering with DOC to house inmates, the CRC saved the State \$20.6 million in 2024.
- A partnership to **address the cost of these unfunded mandates with the State** would be more in line with other Counties and support annual debt service for a new building.
 - HWY + CRC = \$34M **vs** Annual Debt Service = \$37M

Tax Levy



■ Local Spending
■ State Mandates



Unlocking Cost Savings

- Milwaukee County budgets \$500,000/year on emergency repairs for the Safety Building
- In 2024, Milwaukee County spent almost \$3.9M on utilities for the courthouse complex. By achieving an **average** energy consumption, it could save over \$880K/year.
- Current layout of the public safety building requires a 1:1 ratio of bailiffs to occupants for transfer to court. Milwaukee County policy is currently 1:5 if able to safely do so. That's a possible 80% reduction in staff costs for transfers.


Instead of building a new criminal courthouse why don't we spend that money on public transit or Parks?

Design & Construction



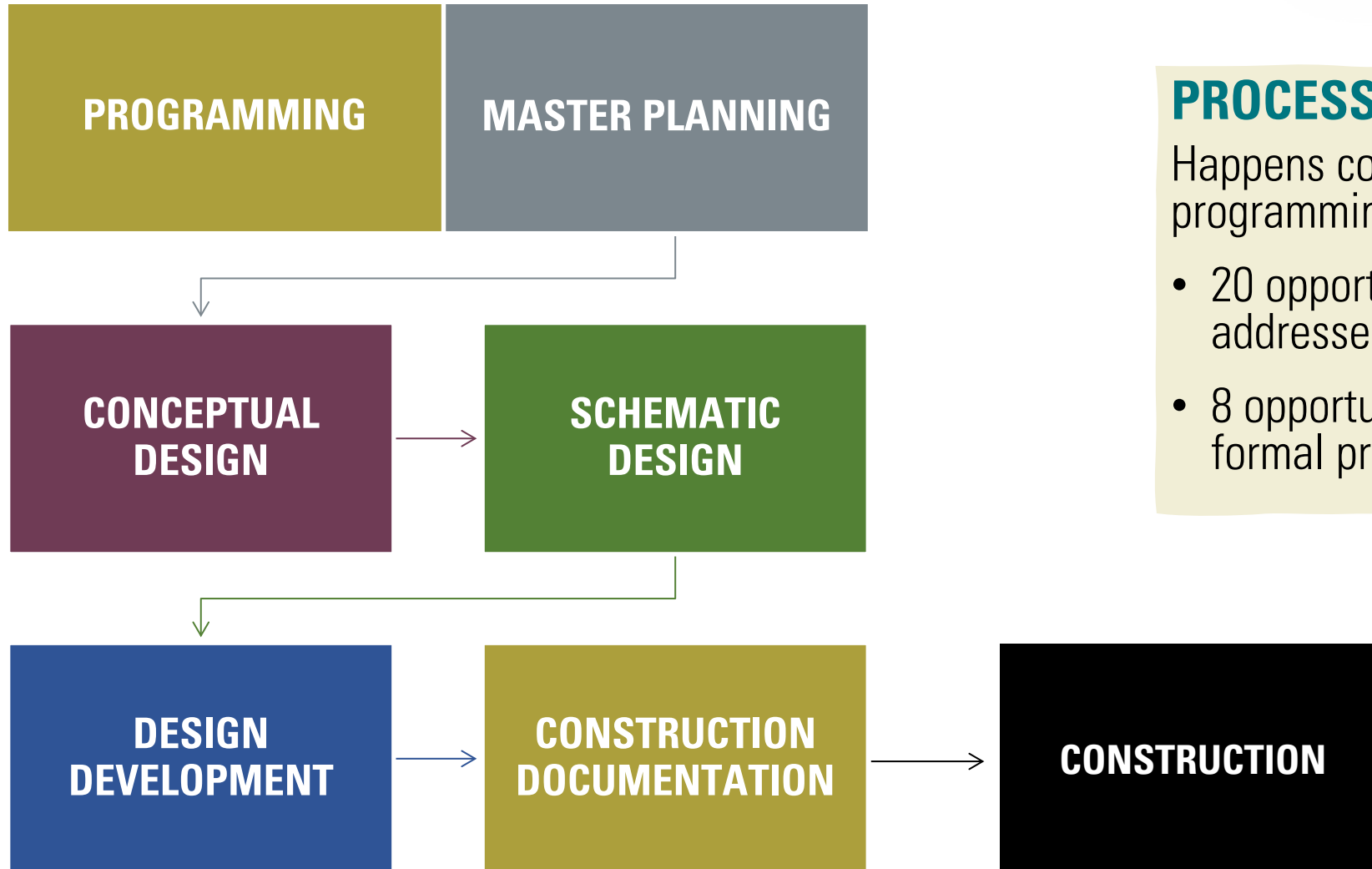
MILWAUKEE
COUNTY

Steps in Design Phase



Design and Construction

Facilitate master planning, design and construction

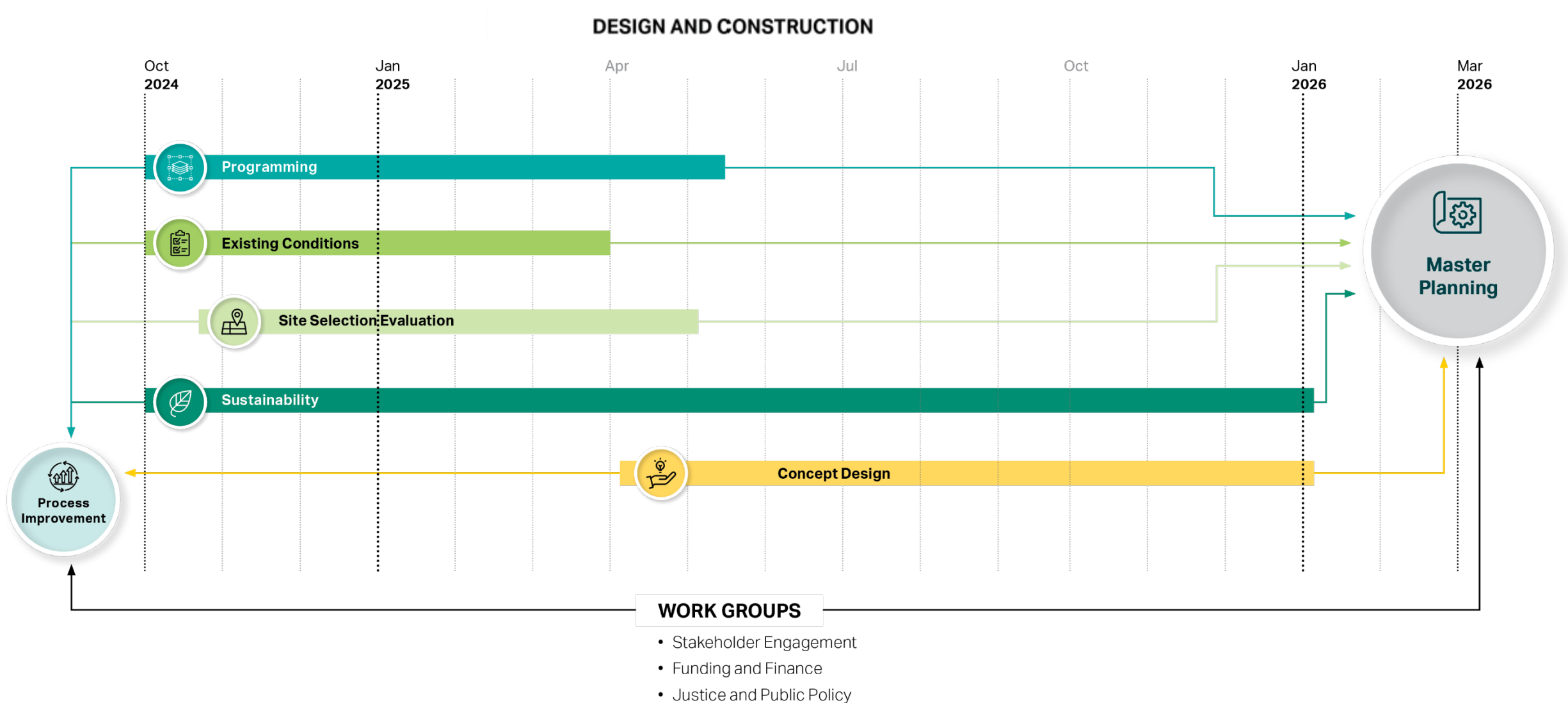


PROCESS IMPROVEMENT:
Happens concurrently with programming:

- 20 opportunities to be addressed in design process
- 8 opportunities identified for formal process improvement



Project Phases + Timeline



Meeting Project Goals through Decisions

PROJECT GOALS



DECISION-MAKING PRINCIPLES



Current Design Phase



Design and Construction

Facilitate master planning, design and construction

PROGRAMMING:

Defines the courthouse's functional needs, space requirements, and operational goals through stakeholder input and analysis.

BUDGET IMPACTS: Sets initial scope and cost parameters based on space and operational needs.

October 2024 to July 2025

DELIVERABLES

- Criminal & Historic Courthouse Departmental Program Confirmations in Progress
- Existing Conditions Report

MASTER PLANNING:

Establishes a long-term, strategic framework for the courthouse complex, including phasing, future expansion, facility upgrades and integration with surrounding infrastructure.

BUDGET IMPACTS: Informs long-term and phased budget needs, including infrastructure and growth.

August 2025 to March 2026

DELIVERABLES

- Workplace Standards
- Standard Space Types
- Sustainable Design Standards

Upcoming Design Phases

CONCEPTUAL DESIGN:

Develops initial design ideas based on programming—exploring site layout, building massing, and spatial relationships. Early plans outline space use, structure, systems, finishes, and sustainability goals.

BUDGET IMPACTS: Identifies major cost drivers like building size, form, and site challenges.

April 2025 to March 2026

SCHEMATIC DESIGN:

Refines floor plans, structure, and systems to define the courthouse's layout and character. Key drawings, like elevations and section, illustrate overall design intent.

BUDGET IMPACTS: Enables early cost estimating and value engineering to align scope and budget.

March 2026 to October 2026



Design and Construction

Facilitate master planning, design and construction

DESIGN DEVELOPMENT:

Refines architectural, structural, and systems details, coordinating materials, dimensions, and components for constructability and budget alignment. Interior design is fully developed including finish, furniture and equipment.

BUDGET IMPACTS: Refines material and system choices, affecting budget accuracy and control.

October 2026 to July 2027

Next Steps



**MILWAUKEE
COUNTY**

Requests & Considerations

- Relay event opportunities to seek public feedback in your district to Kyle Ashley, Director of Community Outreach
investinginjustice@milwaukeecountywi.gov
- Support the FY26 Capital Budget Request to carryout critical, phased design work
- Reach out with questions or for media support as needed before the next informational board report (September 2025)





**MILWAUKEE
COUNTY**