

# Milwaukee Parks Foundation Updates

Rebecca Stoner, Milwaukee Parks Foundation  
Executive Director  
May, 2026

*Prepared for the Parks and Culture Committee*



MILWAUKEE PARKS  
FOUNDATION





# MPF Overview & Impact

# Milwaukee Parks Foundation

**501(c)3 Nonprofit**

## **Mission**

Collectively steward a thriving park system.

## **Vision**

Support a safe and vibrant parks system that benefits all.



*Milwaukee Parks Foundation Impact through 2025*



**\$3,884,633**

Money pledged or  
invested



**13,524**

People in the parks



**5,971**

Volunteer hours

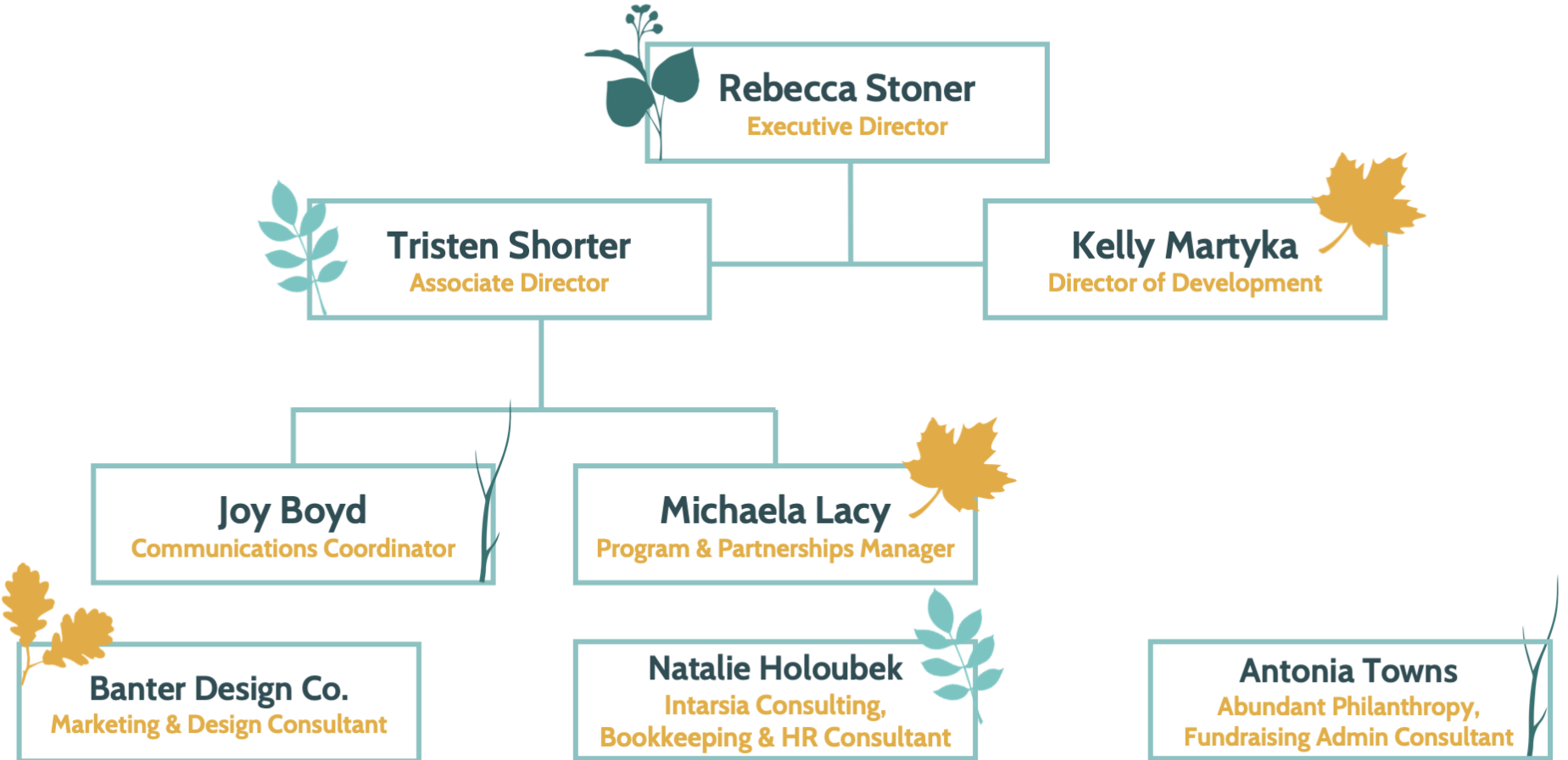


# Other Impact Metrics

- Support from MPF has helped plant more than 3,000 trees in our parks
- MPF has maintained an 85 cents on the dollar park investment rate
- More than \$1.5M in county support has been leveraged due to MPF projects
- “Sprouts partners” (grassroots grantees) across 2022-2025, have brought 8,063 individuals into 12+ parks via basketball clinics, youth soccer leagues, a farmer’s market and music series, intergenerational neighborhood programming, etc.
- MPF has fundraised to support a trails work crew, and at least three additional roles at Milwaukee County Parks



# MPF Organization Chart





# Project Spotlights

# Meaux Park

- \$200,000+ investment
- Community partners: Running Rebels
- New asphalt, fencing, nets, rims, lines, ADA accessible bleachers, tree planting
- Home to the Warning League: longest running outdoor league in the country



# McGovern Park

- \$300,000+ investment; ongoing projects; 6+ community partners

Turf conversion, planting 200+ trees (blue shapes)

Trail restoration (red lines)

Lagoon testing and clean up

Invasive species removal (green outlines)



# McGovern Park (Cont.)



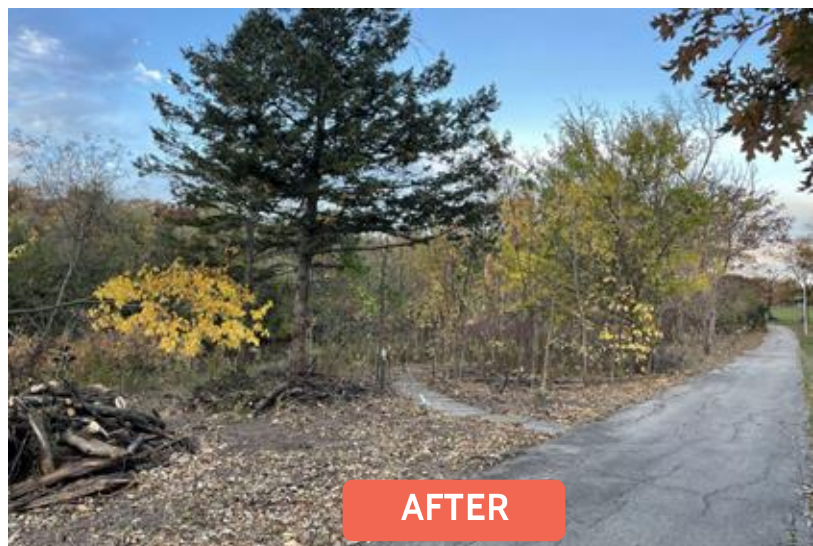
BEFORE



AFTER



BEFORE



AFTER



# Looking Ahead

# 2026-2029 Strategic Plan

- Looking ahead, Milwaukee Parks Foundation set an aggressive goal to **invest \$10M and engage 24,000 people in parks by 2029**
- Three core strategies include:
  - Deepening investments in youth enrichment, trails and trees and high impact capital projects in parks
  - Engagement & Advocacy
  - Capacity and Excellence

**But we need YOU to help us build the movement for parks!**

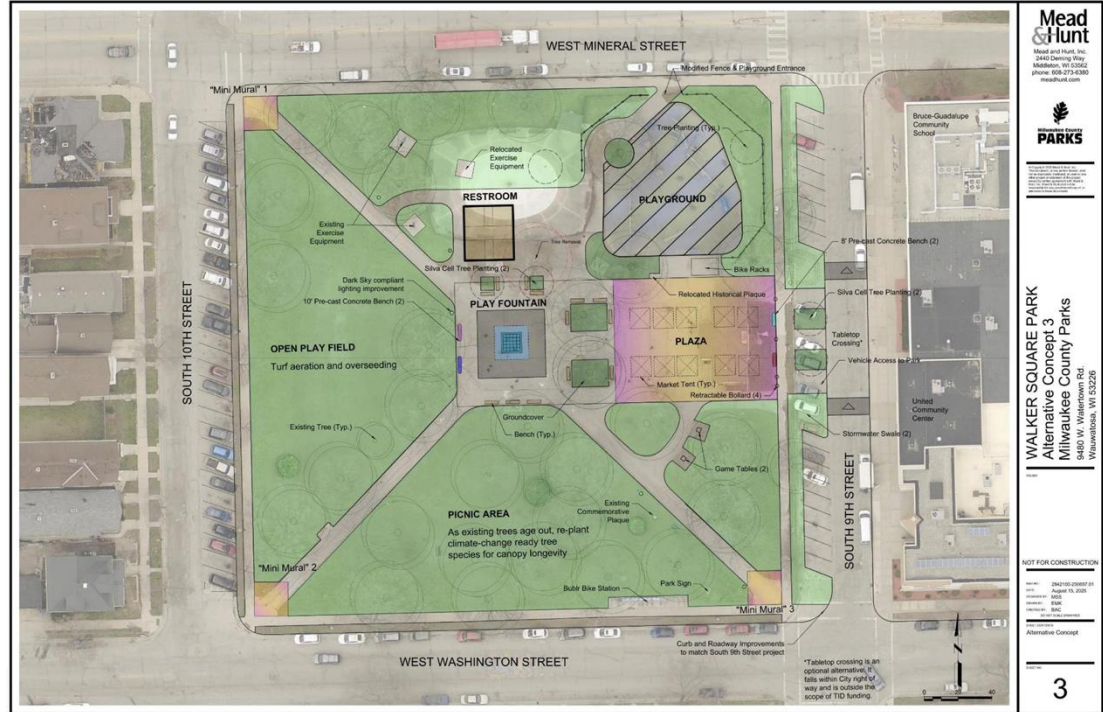


# WASHINGTON PARK AQUATICS



# WALKER SQUARE PARK

- **\$750,000** from City of Milwaukee
- **\$150,000** from Rockwell Foundation
- **\$150,000** from The Helmerich Trust
- **\$50,000** from Bader Philanthropies (for programming in the park)



# GET INVOLVED



- **Attend an event**  
Monthly walk in the Park first Friday 12-1 pm  
Go Green for Parks! Tues, Sept. 15, 2026
- **Volunteer**  
Join a Committee  
Participate in a tree planting or park cleanup day
- **Donate at [mkeparksfoundation.org/donate](https://mkeparksfoundation.org/donate)**
- **Visit a Park**

*[mkeparksfoundation.org](https://mkeparksfoundation.org)  
[info@mkeparksfoundation.org](mailto:info@mkeparksfoundation.org)  
414-514-3017*



# THANK YOU

**“If we had a medicine that delivered as many benefits as parks, we would all be taking it. Parks deliver cardiovascular benefits, fight loneliness, combat osteoporosis, counter stress anxiety, and more. And they do those things without adverse side effects and at minimal costs.”**

*Dr. Frumkin, Senior Vice President at the Trust for Public Land and former dean of the University of Washington School of Public Health*

