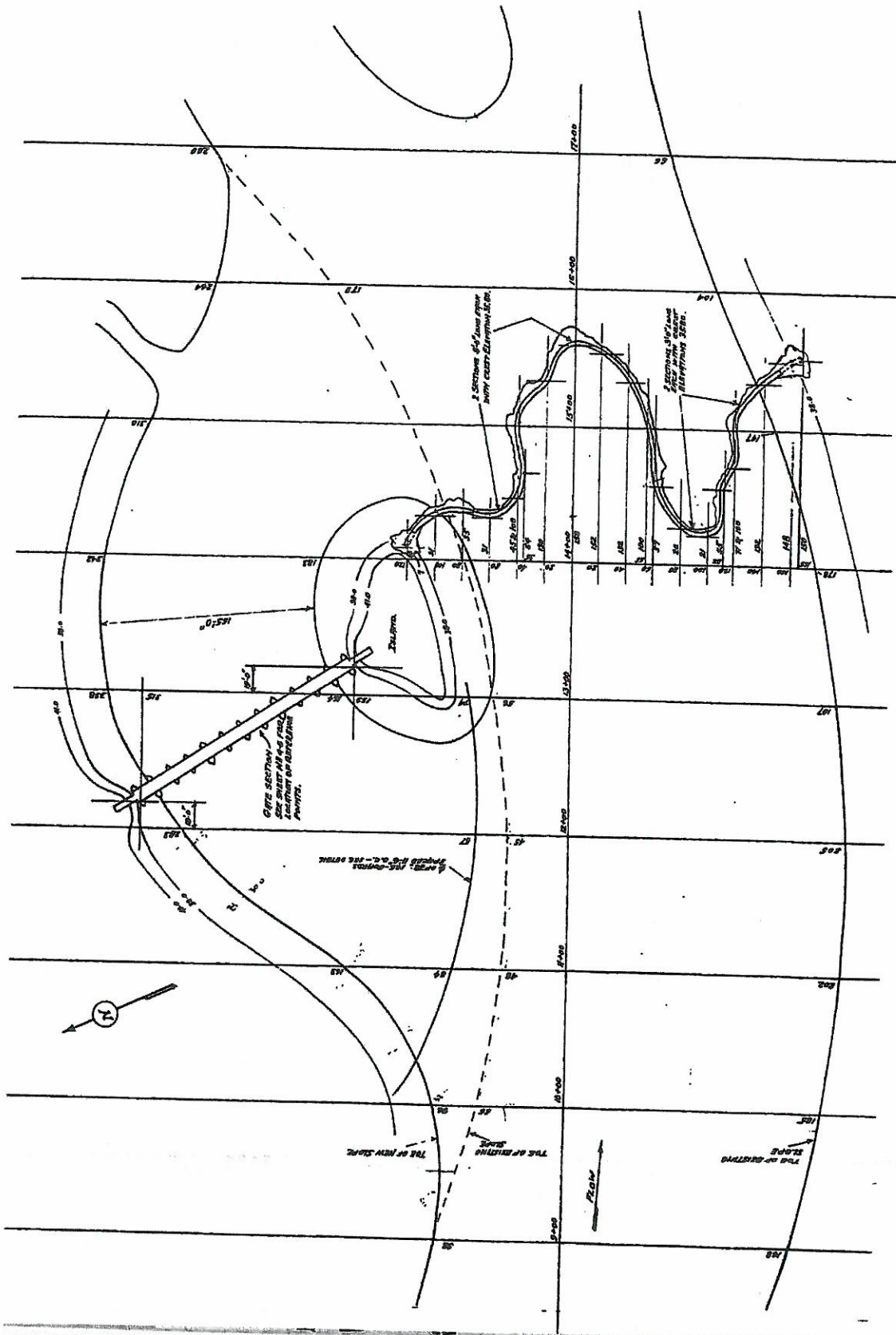


Exhibit A



Designed by M. B. Coifman
Consulting Engineer
MILWAUKEE COUNTY REGIONAL PLANNING DEPARTMENT

GENERAL PLAN
Sheet 1 of 2

NOTE:
DISTANCES FROM STATION 1100 TO CURVED SPILLWAY BEAR TO THE EXISTING SLOPE OF THE SHOULDER.
TOTAL LENGTH OF CURVED SPILLWAY-SEE PART OF PLAN 50' F. WITH CENTER ELEVATION 328.00. THIS IS WITH CENTER OF EXISTING SLOPE.

Designed by M. B. Coifman
Consulting Engineer

MILWAUKEE COUNTY REGIONAL PLANNING DEPARTMENT

ESTABLISH PARK DAM
PLOT PLAN; ICE GUARD & SPILLWAY DETAILS

LANDSCAPE DESIGN SECTION <u>Alfred Berman</u> Landscape Architect	ENGINEERING DESIGN SECTION <u>Ray E. Bohrens</u> Major Asst. Civil Engineer	
Survey.....	Approved: <u>E. Edwards</u> Date: <u>4/24/37</u>	
Plan.....	Tracing.....	Supervising Engineer
Checked.....	Approved: <u>W. T. ...</u> Date: <u>5/2/37</u>	Highway Commissioner & Planning Engineer

DEPARTMENT OF THE INTERIOR
NATIONAL PARK SERVICE

MILWAUKEE COUNTY PARK COMMISSION
CO-OPERATING

BRANCH OF PLANNING

STATE PARK DIVISION

Prepared by <u>James D. ...</u> Secretary Milwaukee County Park Commission	SYMBOL
Recommended <u>John P. ...</u> Inspector	NUMBER 150
Approved <u>John P. ...</u> Regional Officer	DATE

S.R-WIS.
9006-3-8
SCALES AS SHOWN

SHEET 3 OF 13 SHEETS

49-D-30

24X

MICROFILMED