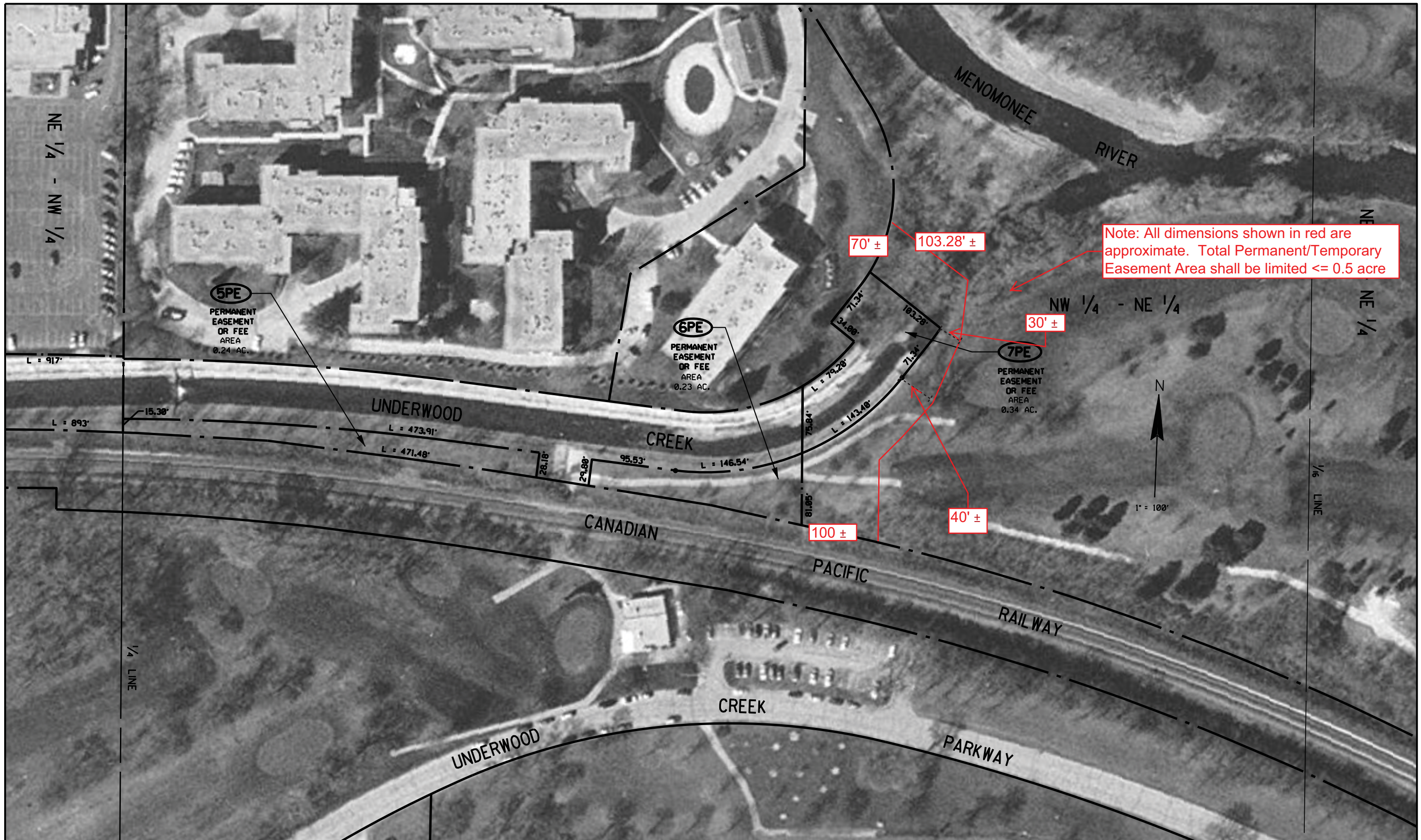


Note: All dimensions shown in red are approximate. Total Permanent/Temporary Easement Area shall be limited <= 0.5 acre

REUSE OF DOCUMENTS THIS DOCUMENT AND THE IDEAS AND DESIGNS INCORPORATED HEREIN IS AN INSTRUMENT OF PROFESSIONAL SERVICE AND IS NOT TO BE USED, IN WHOLE OR IN PART, FOR ANY OTHER PROJECT WITHOUT THE WRITTEN AUTHORIZATION OF THE MILWAUKEE METROPOLITAN SEWERAGE DISTRICT.	VERIFY SCALES BAR IS ONE INCH ON ORIGINAL DRAWING IF NOT ONE INCH ON THIS SHEET, ADJUST SCALES ACCORDINGLY.	DSGN KMC	This Design Prepared For MMSD By:		 In Association With:	02-15-08 07-05-06	ADD PARCELS 2-IS, 8PE, 9T REMOVE PARCELS 13PE, 14PE (MMSD OWNED)	BY APVD	 Preserving The Environment Improving Water Quality	MILWAUKEE METROPOLITAN SEWERAGE DISTRICT UNDERWOOD CREEK REHABILITATION PROJECT		DRAWING NO.: uc113d.dgn
		DR KMC	CHK CAD	REV. NO.						DATE	REVISION DESCRIPTION	04-21-08 REVISIONS APPROVED BY MMSD COMMISSION 07-24-06 MMSD COMMISSION APPROVED



REUSE OF DOCUMENTS
 THIS DOCUMENT AND THE IDEAS AND DESIGNS INCORPORATED HEREIN IS AN INSTRUMENT OF PROFESSIONAL SERVICE AND IS NOT TO BE USED, IN WHOLE OR IN PART, FOR ANY OTHER PROJECT WITHOUT THE WRITTEN AUTHORIZATION OF THE MILWAUKEE METROPOLITAN SEWERAGE DISTRICT.

VERIFY SCALES
 BAR IS ONE INCH ON ORIGINAL DRAWING
 IF NOT ONE INCH ON THIS SHEET, ADJUST SCALES ACCORDINGLY.

DSGN	KMC
DR	KMC
CHK	CAD
APVD	

This Design Prepared For MMSD By:
HNTB
 In Association With:

REV. NO.	DATE	REVISION DESCRIPTION	BY
02-15-08			
07-05-06		ADD PARCELS 2-1S, 8PE, 9T REMOVE PARCELS 13PE, 14PE (MMSD OWNED)	APVD



MILWAUKEE METROPOLITAN SEWERAGE DISTRICT
 UNDERWOOD CREEK REHABILITATION PROJECT
 04-21-08 REVISIONS APPROVED BY MMSD COMMISSION
 07-24-06 MMSD COMMISSION APPROVED

DRAWING NO.:	uc114p.dgn
SHEET:	14 of 14
DATE:	MAY 2006
CONTRACT:	42026
MMSD FILE:	