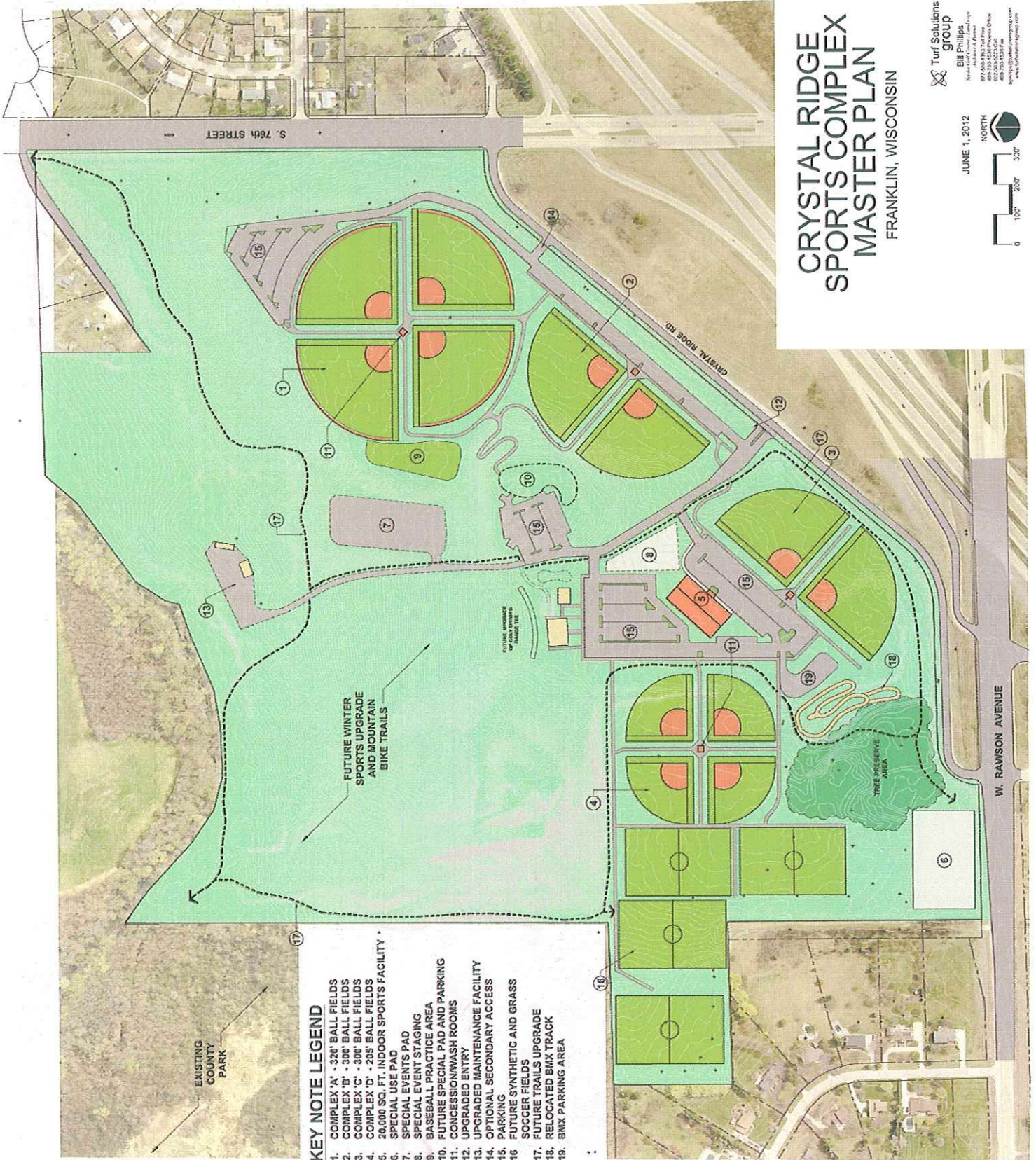
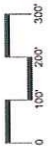


# CRYSTAL RIDGE SPORTS COMPLEX MASTER PLAN

FRANKLIN, WISCONSIN

Turf Solutions  
group  
Bill Phillips  
Senior Staff Engineer  
877-336-3344  
482-233-1582 Project Office  
482-233-1587 Fax  
www.turfsolutionsgroup.com

JUNE 1, 2012



**KEY NOTE LEGEND**

- 1. COMPLEX 'A' - 320' BALL FIELDS
- 2. COMPLEX 'B' - 300' BALL FIELDS
- 3. COMPLEX 'C' - 300' BALL FIELDS
- 4. COMPLEX 'D' - 295' BALL FIELDS
- 5. 20,000 SQ. FT. INDOOR SPORTS FACILITY
- 6. SPECIAL USE PAD
- 7. SPECIAL EVENTS PAD
- 8. SPECIAL EVENT STAGING
- 9. BASEBALL PRACTICE AREA
- 10. FUTURE SPECIAL PAD AND PARKING
- 11. CONCESSION/WASH ROOMS
- 12. UPGRADED ENTRY
- 13. UPGRADED MAINTENANCE FACILITY
- 14. OPTIONAL SECONDARY ACCESS
- 15. PARKING
- 16. FUTURE SYNTHETIC AND GRASS SOCCER FIELDS
- 17. FUTURE TRAILS UPGRADE
- 18. RELOCATED BMX TRACK
- 19. BMX PARKING AREA