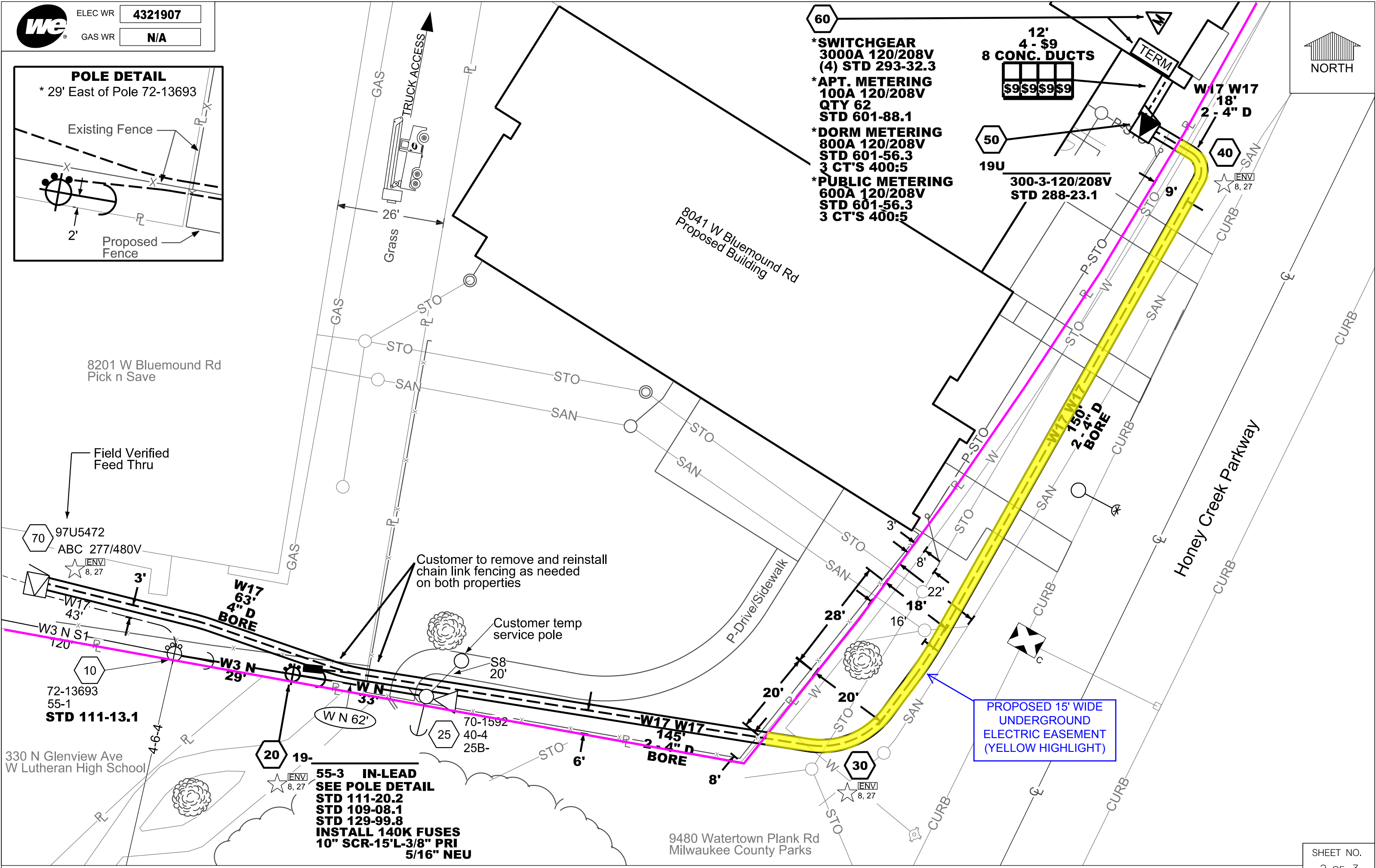


- *SWITCHGEAR**
 3000A 120/208V
 (4) STD 293-32.3
 - *APT. METERING**
 100A 120/208V
 QTY 62
 STD 601-88.1
 - *DORM METERING**
 800A 120/208V
 STD 601-56.3
 3 CT'S 400:5
 - *PUBLIC METERING**
 600A 120/208V
 STD 601-56.3
 3 CT'S 400:5
- 12' 4 - \$9
 8 CONC. DUCTS
 \$9\$9\$9\$9
- 19U 300-3-120/208V
 STD 288-23.1
- W17 W17
 18' 2 - 4" D



55-3 IN-LEAD
 SEE POLE DETAIL
 STD 111-20.2
 STD 109-08.1
 STD 129-99.8
 INSTALL 140K FUSES
 10" SCR-15'L-3/8" PRI
 5/16" NEU

PROPOSED 15' WIDE
 UNDERGROUND
 ELECTRIC EASEMENT
 (YELLOW HIGHLIGHT)