



# Moving Forward Together

Department of Administrative Services  
An overview report to the Board of Supervisors  
May 2022

This Photo by Unknown Author is licensed under [CC BY-NC-ND](https://creativecommons.org/licenses/by-nc-nd/4.0/)





**MILWAUKEE  
COUNTY**

## Vision

By achieving racial equity, Milwaukee is the healthiest County in Wisconsin

## Mission

We enhance quality of life through great public service

## Values

### Inclusion

Seek diverse perspectives

### Influence

Use your power for good

### Integrity

Do the right thing

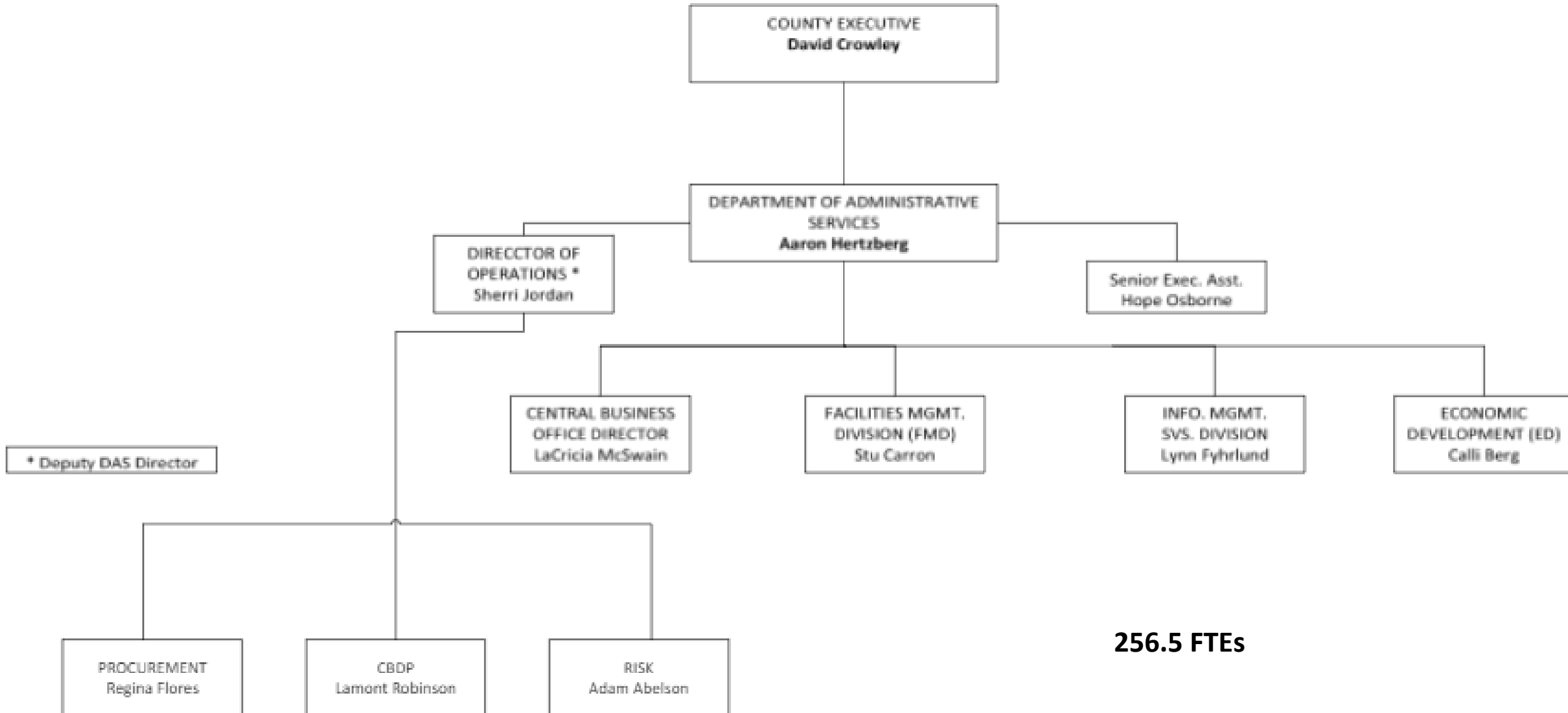
# DAS Mission & Vision Statements

M: *We plan, develop, build and manage the technical, operational, and physical infrastructure of Milwaukee County to **deliver great public service.***

V: *A highly engaged workforce provides operational excellence and superior customer service to **achieve racial equity.***



# DEPARTMENT OF ADMINISTRATIVE SERVICES ORGANIZATION CHART



# Central Business Office

---

Director: LaCricia McSwain

Staff: 10 FTEs

Key Roles:

- Centralized fiscal support for DAS and 4 other small departments.
- Budgeting, Accounting, accounts receivables and financial analysis.
- Countywide support for development of administrative procedures.



# Economic Development

Director: Calli Berg

Staff: 5

Key Roles:

- Real estate services
  - Lease management (tenant & landlord)
  - Surplus land sales
  - Management & sale of tax foreclosed properties
- Advance economic interests of Milwaukee County and its citizens
- Manage relationships with cultural institutions





# Facilities Management

Director: Stuart Carron

Staff: 137 FTEs

Key Roles:

- Operations & Maintenance
- Facilities Planning, Architecture & Engineering
- Space Planning
- Energy Efficiency and Accessibility
- Land Information Systems



# Information Management Services

Director: Lynn Fyhrlund

Staff: 75.5

Key Roles:

- IT Strategy, Technology governance & administration
- IT Project Management
- Applications Development & Lifecycle Management
- Data Center Services
- Support Services
- ~~Mainframe~~
- Managed Print Services
- Technology Purchase Management (Central Spend)
- Cyber Security







# Operations

Director: Sherri Jordan (DAS Deputy Director)

Staff: 25

Key Roles:

- Community Business Development Partners
  - Designing, Implementing & Monitoring TBE & DBE programs
  - Certification of DBE firms
- Procurement
  - Development & implementation of procurement procedures
  - Lead & support departmental procurement & contracting
- Risk Management
  - Claims Administration
  - Safety and Loss Control
  - Insurance Procurement
  - Contractual Risk Transfer



## 2022 Focus

- Strategic Planning
- Employee Development & Engagement
- Operational Excellence
- Customer Service
- Measuring & Delivering Outcomes



# Major Project Underway

- Addressing challenges (Vacancies, structural deficits, public-private partnership building)
- Process efficiencies (equitable contracting, records management, FMD project management, contract management)
- Investment of ARPA Funds (Digital transformation, energy efficiency and capital investment)
- Reviewing ordinances, policies and procedures for structural racism
- Center for Forensic Science & Protective Medicine



# When you're likely to see DAS

- Economic development activities
- Land disposition reports (not Parks)
- CBDP TBE/DBE reporting
- Supporting large procurement projects
- Capital planning and project proposals
- Major IT projects/investments
- DAS related HR/Budget actions



# What comes next?





# Moving Forward Together



MILWAUKEE  
COUNTY



**MILWAUKEE  
COUNTY**