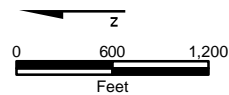


LEGEND

- - - Approximate Former Impoundment Extent (Elevation 595 feet NAVD88)
- ▭ Floodplain Area Boundary
- North Ave Dam Removal Sediment Stockpile
- FEMA 100-Year Floodplain

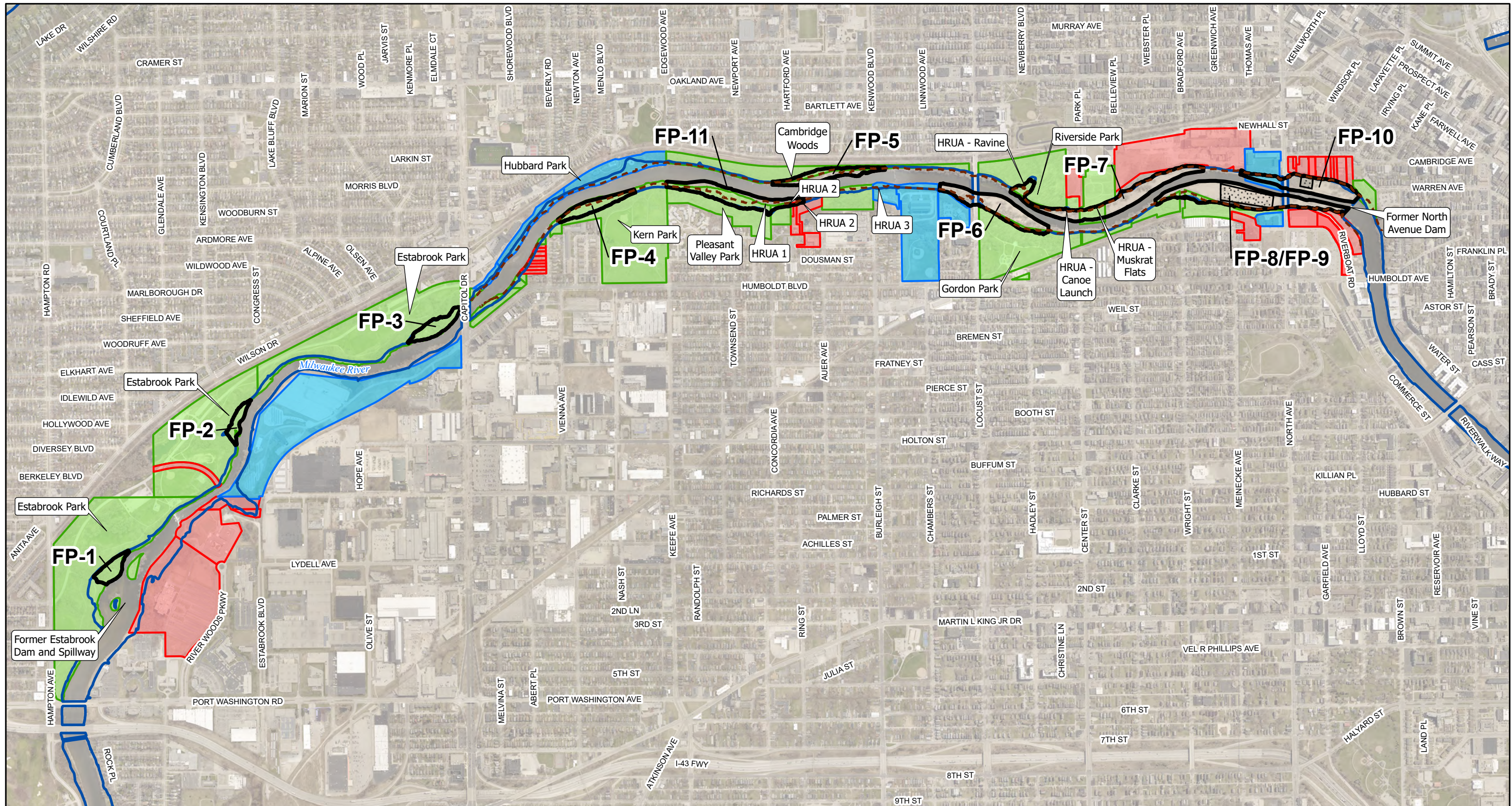


Notes:

1. FEMA = Federal Emergency Management Agency; NAVD88 = North American Vertical Datum of 1988
2. 2020 Aerial Photography provided by The Milwaukee County Land Information Office (MCLIO).



Figure 1-2
Floodplains Reach Location Map
 Milwaukee Estuary Area of Concern
 Milwaukee, Wisconsin



LEGEND

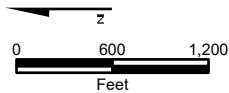
Map Features

- Approximate Former Impoundment Extent (Elevation 595 feet NAVD88)
- Floodplain Area Boundary
- North Ave Dam Removal Sediment Stockpile

FEMA 100-Year Floodplain

Property Ownership

- Milwaukee County
- Other Public
- Private

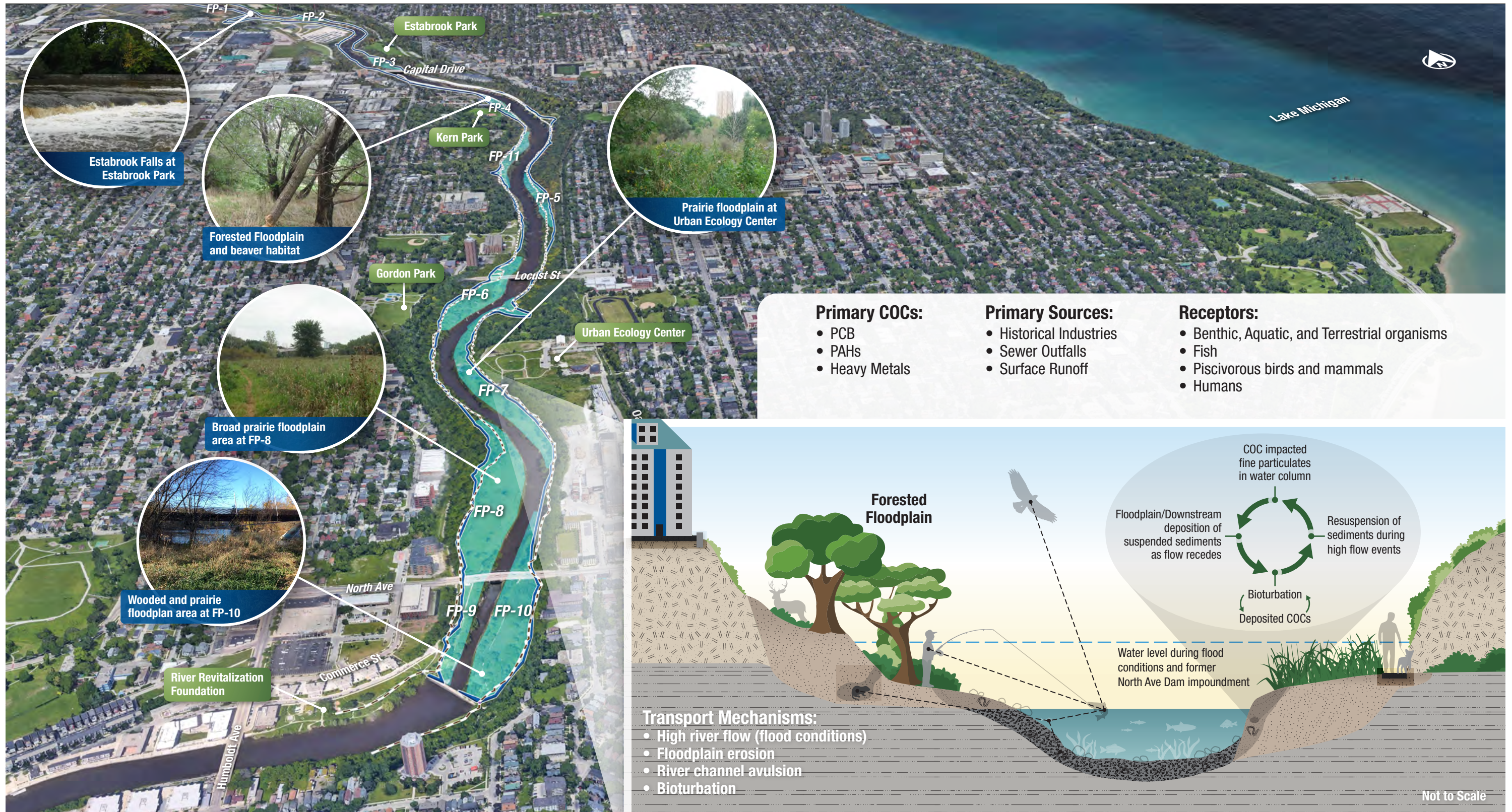


Notes:

1. FEMA = Federal Emergency Management Agency; NAVD88 = North American Vertical Datum of 1988
2. 2020 Aerial Photography provided by The Milwaukee County Land Information Office (MCLIO).



Figure 1-3
Property Ownership
 Milwaukee Estuary Area of Concern
 Milwaukee, Wisconsin



Primary COCs:

- PCB
- PAHs
- Heavy Metals

Primary Sources:

- Historical Industries
- Sewer Outfalls
- Surface Runoff

Receptors:

- Benthic, Aquatic, and Terrestrial organisms
- Fish
- Piscivorous birds and mammals
- Humans

Transport Mechanisms:

- High river flow (flood conditions)
- Floodplain erosion
- River channel avulsion
- Bioturbation

Inset Legend

- Floodplain Soil
- Alluvial Gravel/Cobble
- Fill and Soil
- River Sediment (Clay and Silt Rich in Organics)
- Compacted Native Material (Low Permeability, Dense Clays and Silts)

Figure 2-1
Conceptual Site Model
 Milwaukee River Floodplains Reach
 Milwaukee Estuary Area of Concern
 Milwaukee, Wisconsin

Map Legend

- Floodplain Area
- FEMA 100-Year Floodplain
- Approximate Historical Impoundment Extent = 595 Feet NAVD88