



EAST-WEST

I-94 between 70th Street and 16th Street in Milwaukee County

WisDOT I-94 E-W Milwaukee County Board

December 3, 2025



Agenda



1 I-94 E-W – Project and Schedule Overview

2 Milwaukee County Coordination

a Sheriff

b Transit

c Maintenance

d Parks

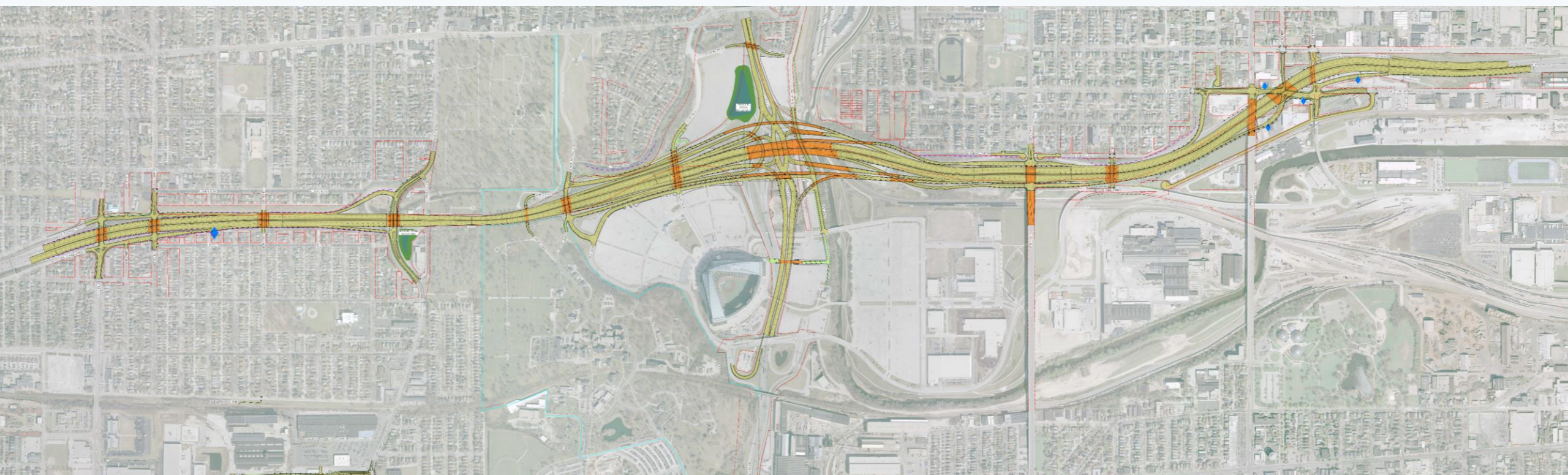
e Employer Solutions

I-94 E-W Project and Schedule Overview



Plan Moving Forward – Freeway Design

A modernized corridor with four lanes in each direction; maintains closely spaced service interchanges, changes Hawley Road to half-interchange; moves all entrance/exit to right, and increases/improves bicycle and pedestrian connections.



Anticipated Schedule



DESIGN

- 2025-2027: Final Design continues – Stadium Interchange and East leg

CONSTRUCTION

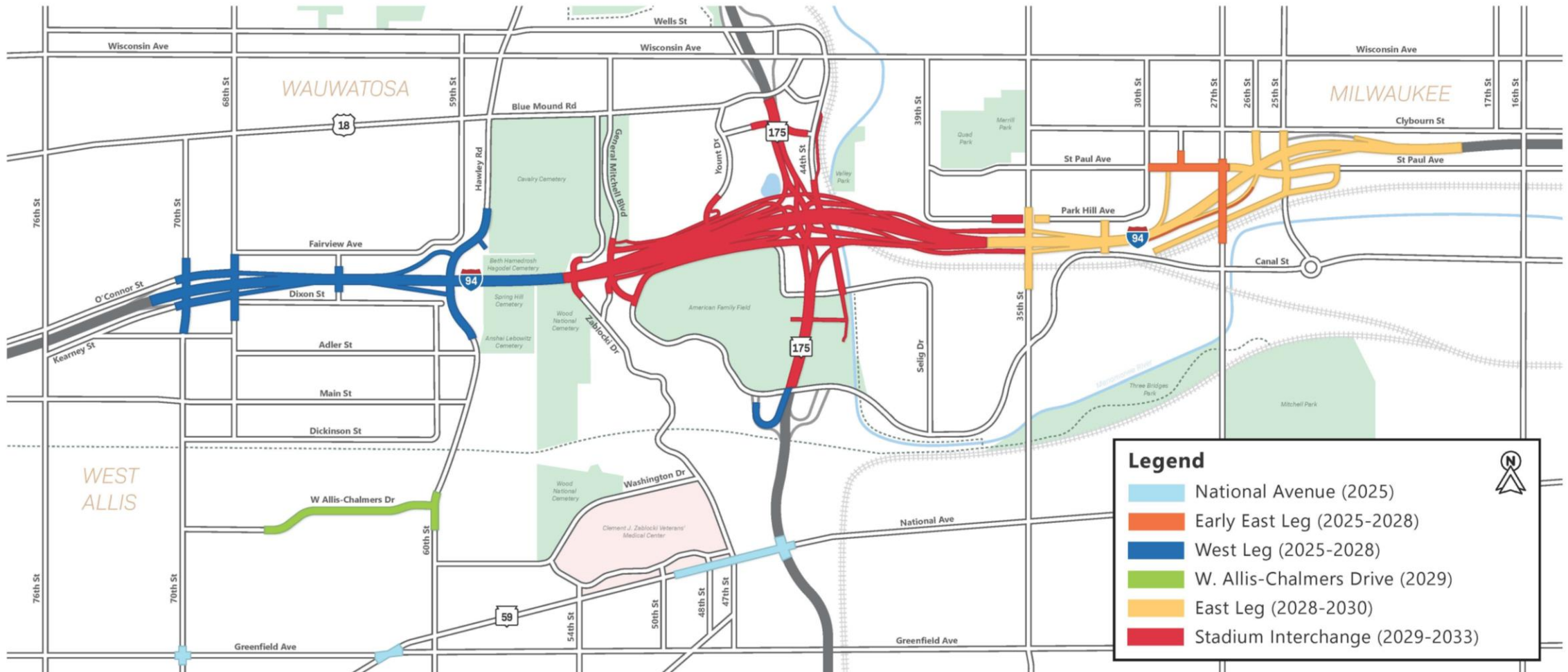
- 2025-2028: West Leg & Early East Leg Construction
 - I-94 reduced to two lanes through much of 2027 primarily due to cemetery area construction
 - Utility work, traffic impacts – overhead and underground utilities
- 2028-2033: Stadium Interchange and East Leg Construction*
 - Current plan – keep three lanes open for most of construction

**** Dependent on approvals and future funding allocations***

Construction Sequencing Plan



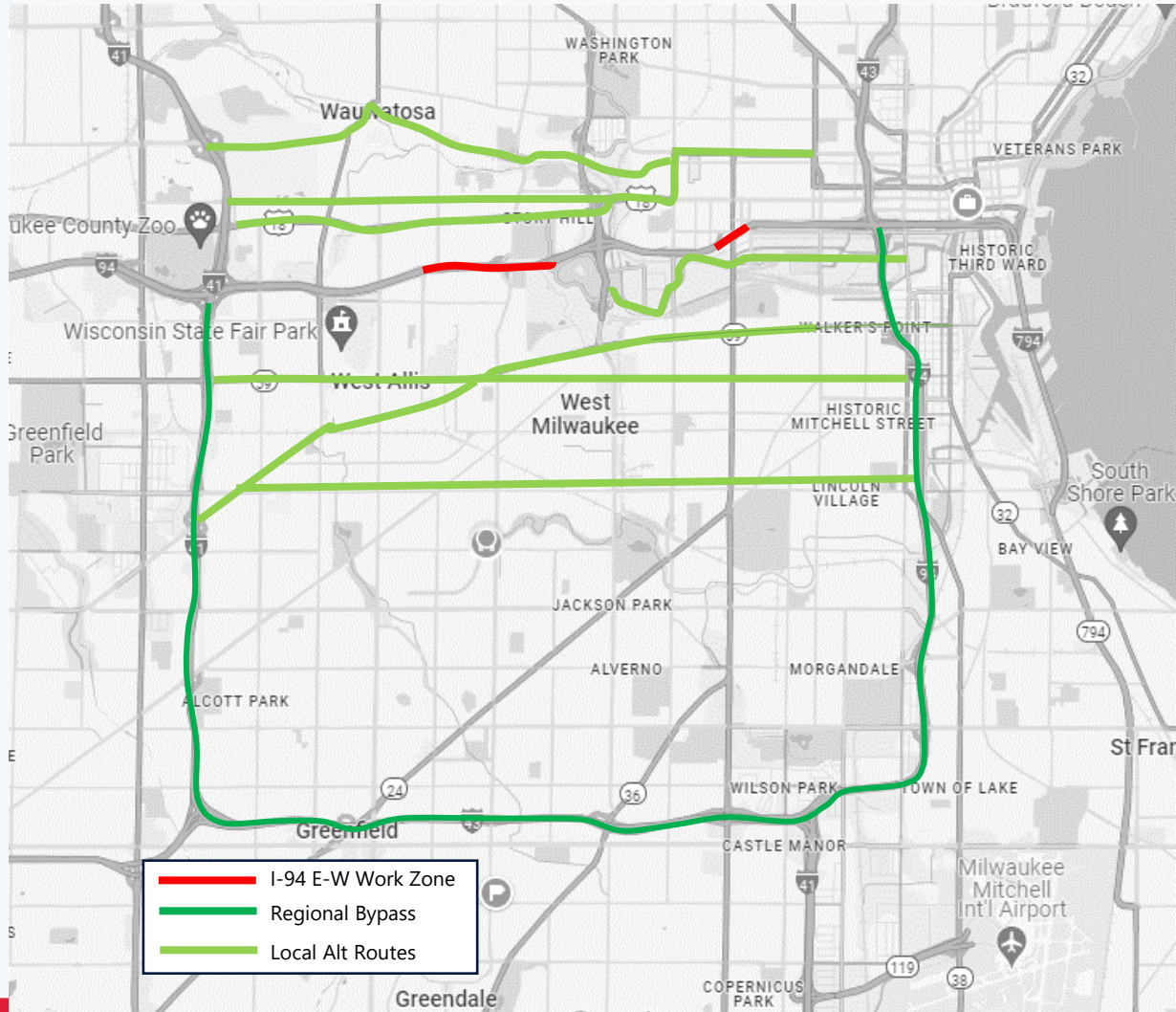
The map below is the current plan for constructing and sequencing the reconstruction of the full I-94 East-West corridor. Many variables impact this plan including accommodating existing traffic, utility relocation, and available funding. This plan will continue to be refined and is subject to change as the design progresses.



Local Road Detours & Regional Alternate Routes



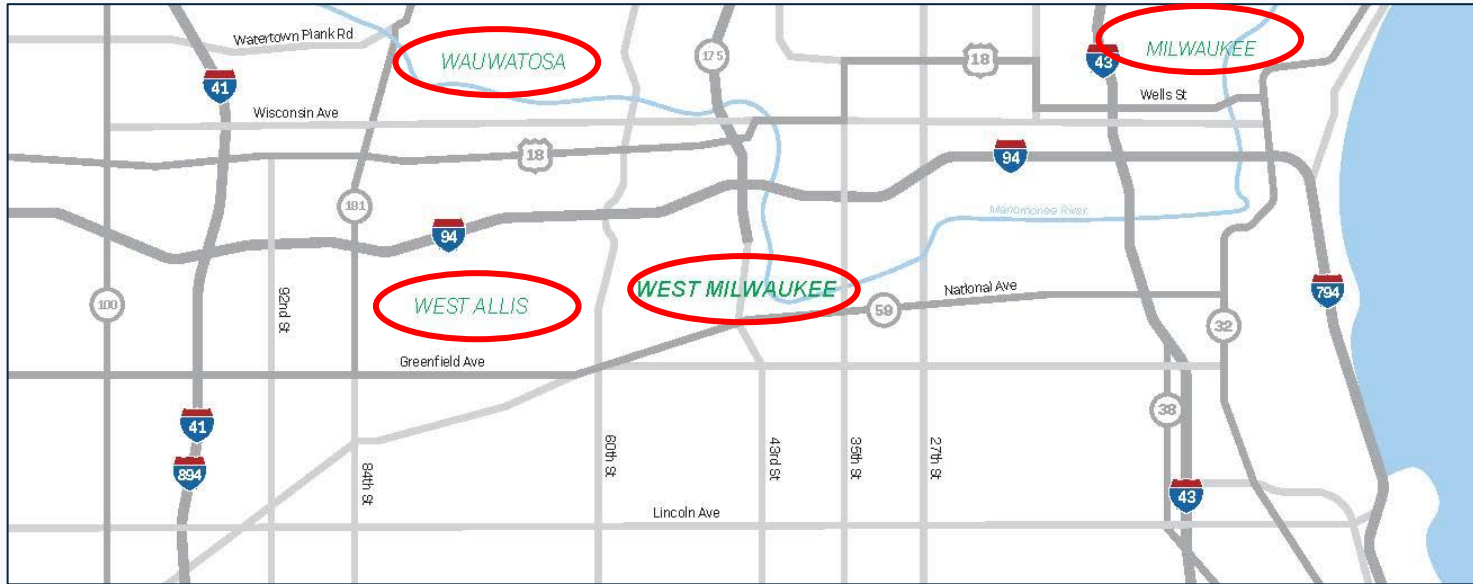
I-94 East-West Diversion (West Leg, Early East Leg)



Primary Diversion Routes include:

- WIS 100 (Brown Deer Rd) and I-894 as regional bypass routes
- State St, Wisconsin Ave, Blue Mound Rd on the North side of I-94
- Canal St, National Ave, Greenfield Ave, and Lincoln Ave on the South side of I-94
- North-South routes (not highlighted on map) include:
 - 35th St (primary diversion for 27th St closure)
 - STH 175
 - STH 145

What's been done - improved flow on East/West Grid System



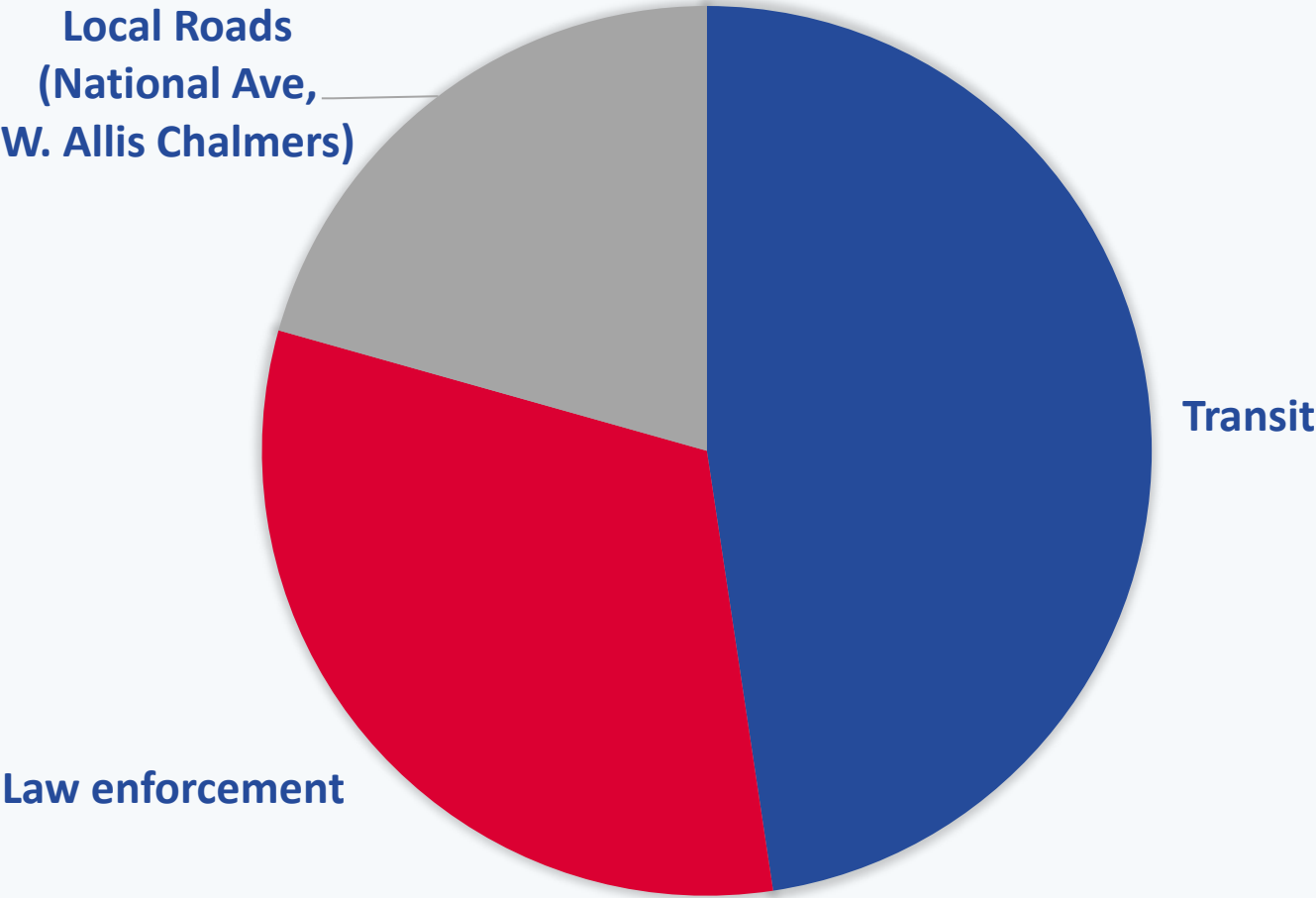
Signal timing improvements:

- National Ave
- Greenfield Ave
- Blue Mound Rd
- Wisconsin Ave
- Miller Park Way
- Key alt routes in Milwaukee

Coordination with law enforcement agencies to provide rapid response to traffic and safety issues

Emergency Vehicle Preemption improved along key routes

Traffic Mitigation Funding



West Leg project



- I-94 from 70th Street to Zablocki Bridge
 - I-94 reduced to two lanes in each direction during majority of 2025-2027 construction
- 68th Street/70th Street Interchange
 - One road underneath I-94 will remain open during construction (Hawley, 64th, 68th, 70th).
 - Final design similar to today's alignment
- Hawley Road Interchange
 - Permanent elimination of access to and from the east
 - All interchange ramps closed during construction
 - Hawley Road itself will be closed (under I-94), likely for about three years
- WIS 175/Brewer Blvd - southbound exit to Frederick Miller Parkway approximate 30-day closure began Nov 3, 2025

Early East Leg project

- 27th Street Bridge over I-94 to close in 2026
- St. Paul Ave. reconstructed west of 27th Street
- 28th Street turned into a cul-de-sac at St Paul Ave.
- I-94 eastbound exit to 26th Street will close for a few months early in project*
- ***NOTE:** *Right now, we believe that will happen in the first half of 2026. We will have more exact dates when we get closer.*

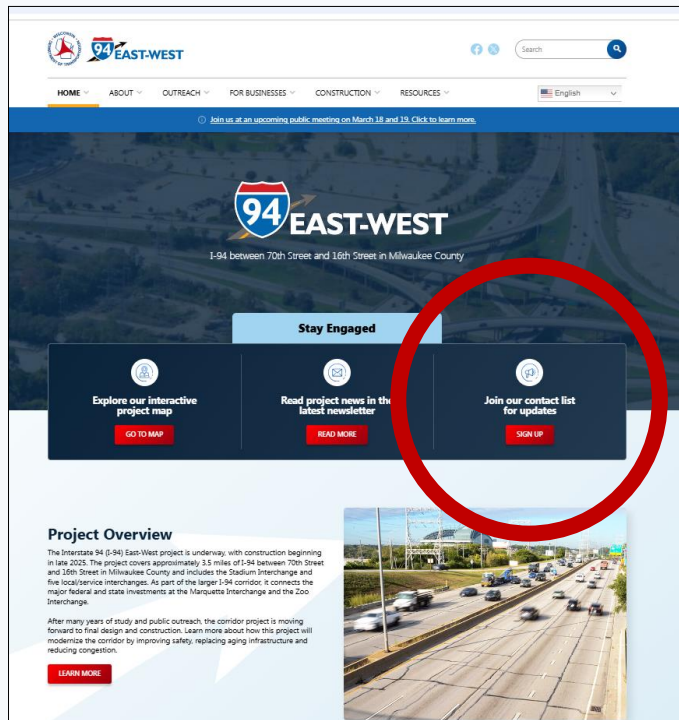


How to stay up to date



- **Project website:**
94eastwest.wisconsin.gov
- Sign up for updates

- Business resources available
- Construction outreach team – will create materials for individual businesses and organizations as requested
- Get Around Guides for different phases of construction
- Signage and other materials available



Milwaukee County Departments



Sheriff Office



- WisDOT contract with Milwaukee County Sheriff Office in place
- 24/7 coverage in work zone
- Assist with monitoring speed, reckless driving, assist with deliveries, wide load deliveries, other
- Boots on the ground - early identification of traffic issues
- Year-by-year contract during the I-94 E-W construction



- Transit construction mitigation –\$25 to \$30M for transit *NOTE: More than double the transit funding of previous WisDOT mega-projects*
- Where is transit funding going?
 - Additional buses and drivers to maintain headway on routes impacted by I-94 E-W project closures (e.g. long-term bridge or roadway closures)
 - Paratransit





On-going coordination



Reviewed staging and impacts to winter work



Winter maintenance – plowing snow through construction zones

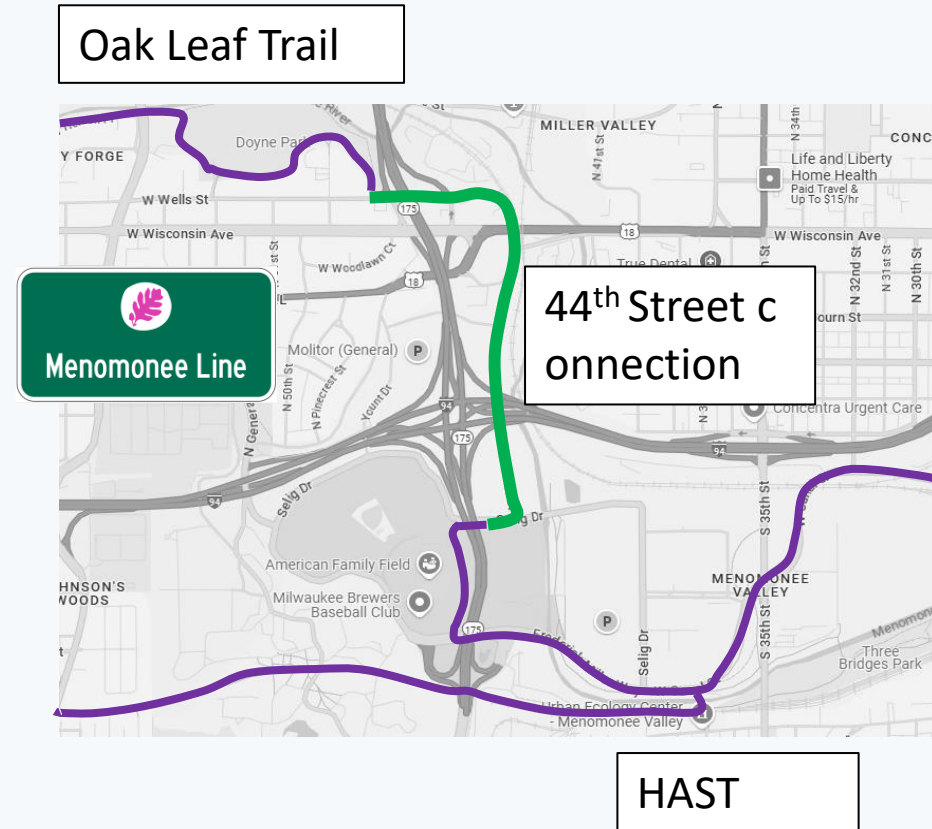


Salt operations – impacted by temporary closures of roads (differing levels of ice buildup)

Parks Department



- Connecting Hank Aaron State Trail (HAST) and Oak Leaf Trail as part of Stadium Interchange reconstruction
- Bluff Park (path from Story Hill Neighborhood to Stadium parking lots)
 - Path will be wider
 - New bridge
 - Keep pedestrian traffic safe from vehicle traffic
- Mitchell Boulevard Park (no direct impacts)



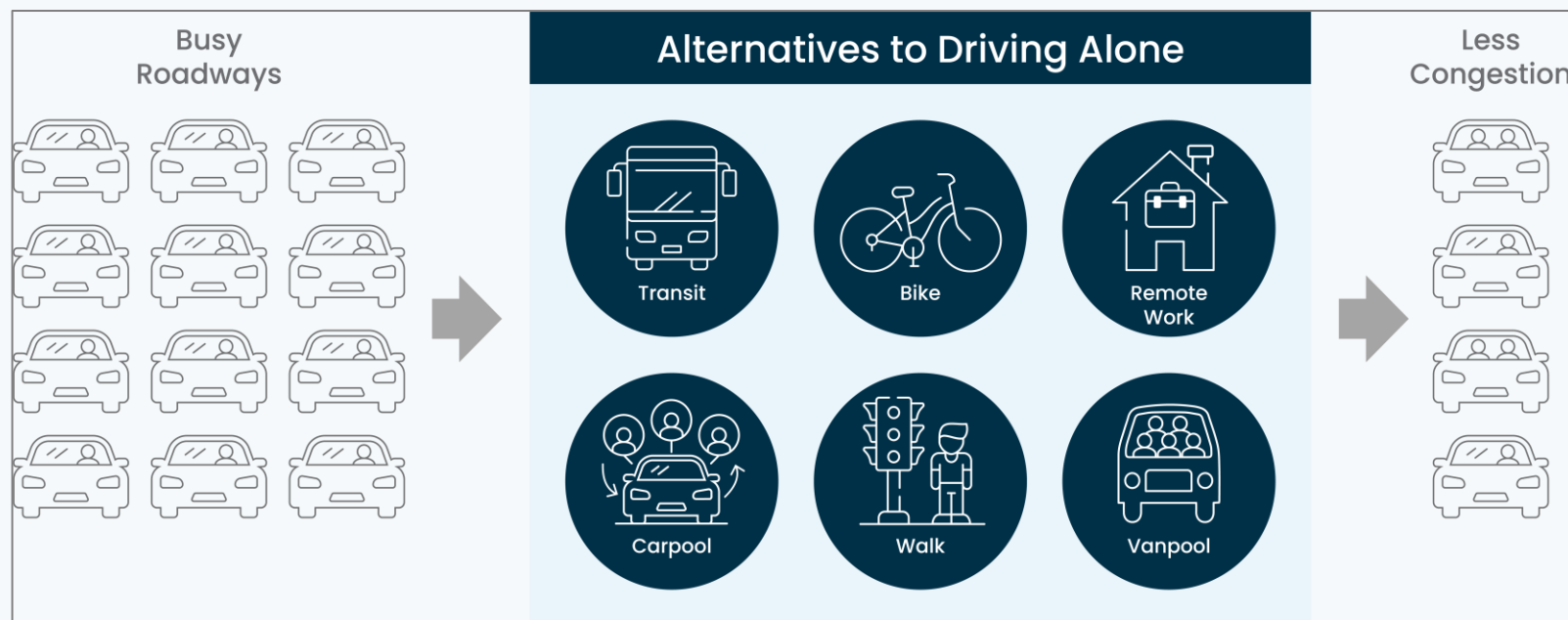
Potential Employer Solutions (courthouse employees and/or your constituents)

SEWRPC CommuteWISE Program

Connect people with more commute solutions.

commutewise

- Commute Challenges
- Employer Subsidies
- Employer Consultation



Questions/Discussion

