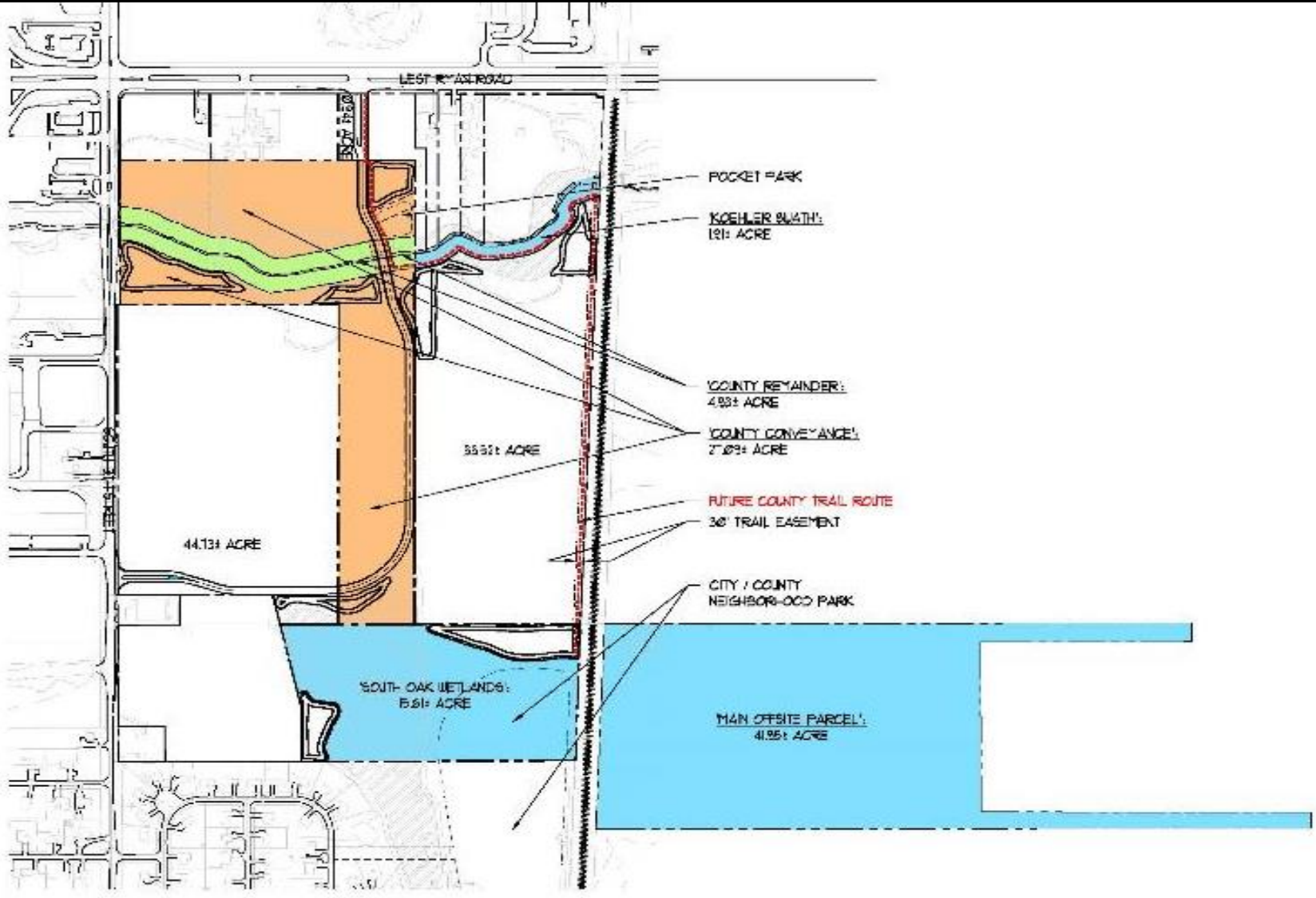


13th and Ryan Land Swap

Committee on Parks, Energy and Environment

3/13/18





Green – Retain

Orange – Trade

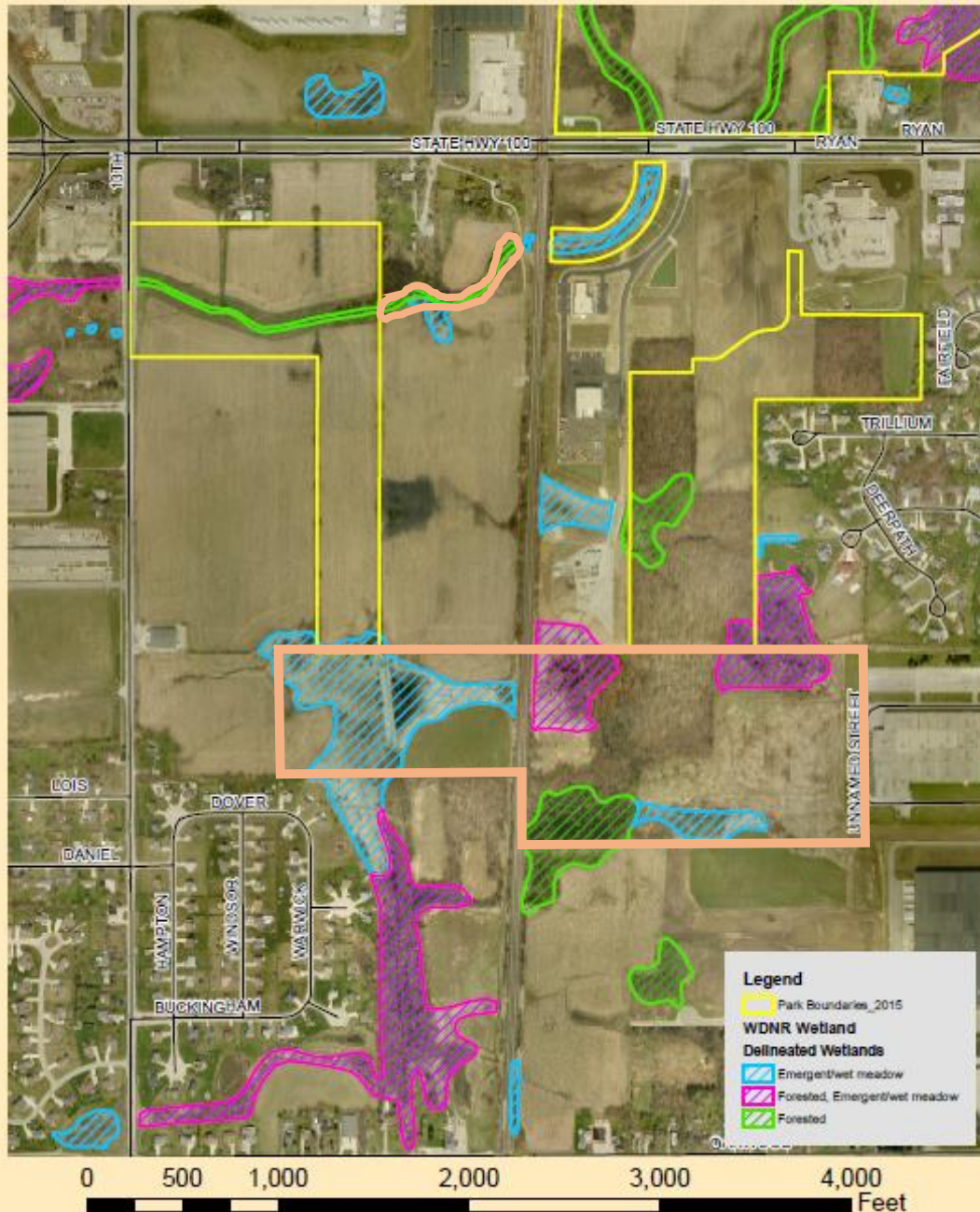
Blue – Acquire

Red - Easement

Overview

- Trade 27 acres of agricultural land in exchange for 59.5 acres of environmentally significant land
- Acquire an easement for future Oak Leaf Trail connections
- A new neighborhood park
- A new business park

Oak Creek Parkway Delineated Wetlands

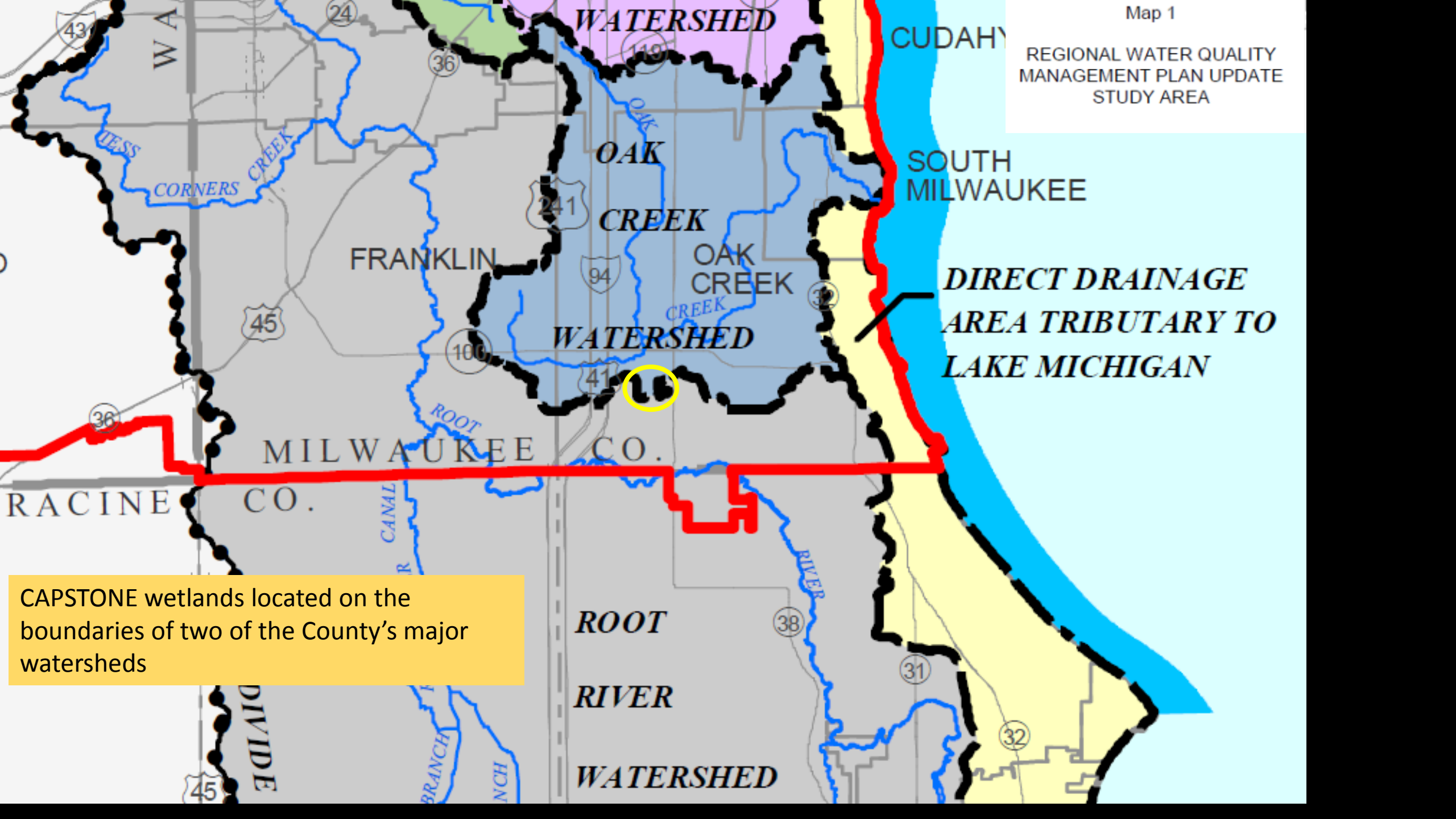


- The Cities of Oak Creek & South Milwaukee – wetland loss
- Flooding, stream bank failure, and infrastructure
- Recent state legislations removes protections for small isolated wetlands

Water Quality Improvements

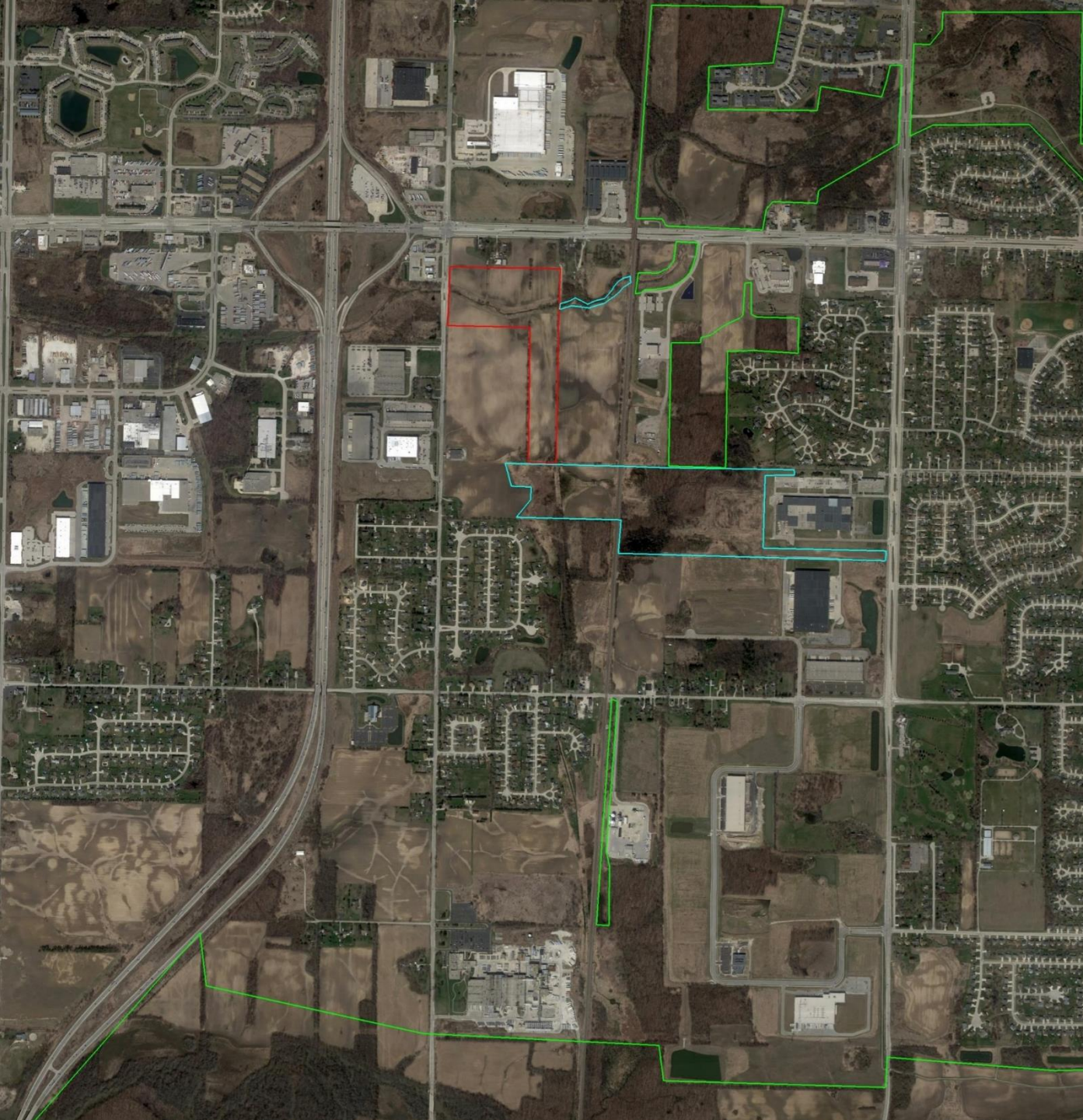
- Capstone business park would be required to construct multiple (potentially 8) stormwater ponds and infiltration basins
- Potential water quality improvements from agricultural conversion





*DIRECT DRAINAGE
AREA TRIBUTARY TO
LAKE MICHIGAN*

CAPSTONE wetlands located on the boundaries of two of the County's major watersheds



- Last opportunity in southern Milwaukee County to connect primary environmental corridors by using predominantly natural habitat
- \$500,000-1,000,000 dollars and take 75-100 years.
- The ecological integrity – genetics, hydrology, and wildlife dispersal

Importance of these Wetlands

- SEWRPC categorizes the Main Offsite Parcel as an NA-3 which is defined as:
“...which are of local significance, often containing good wildlife habitat or providing refuge for a number of native plant species which no longer exist in the surrounding area“
- SEWRPC further lists it as a “Critical Species” habitat site which is defined as:
"Habitats containing species of animals, plants, and other organisms considered by the Federal or State governments to be rare, threatened, or endangered or to have significantly declining or unstable populations”

SEWRPC Planning Report No. 42, [A Regional Natural Areas and Critical Species Habitat Protection and Management Plan for Southeastern Wisconsin](#), September 1997

Conclusions

- Increase in County assets (Gain 32.5 acres) at no cost to tax payers – Fiscal Responsibility
- Preserve sensitive and essential natural areas – Stewardship
- Potential to increase local jobs and tax revenue – Financial Sustainability
- Create a pocket park for residents who currently don't have a park they can walk to – Sense of Community
- Flood water retention and air quality benefits – Quality of Life
- Innovative partnership between two municipalities and a conservation minded developer – Good Government

Preserving Natural Areas

