



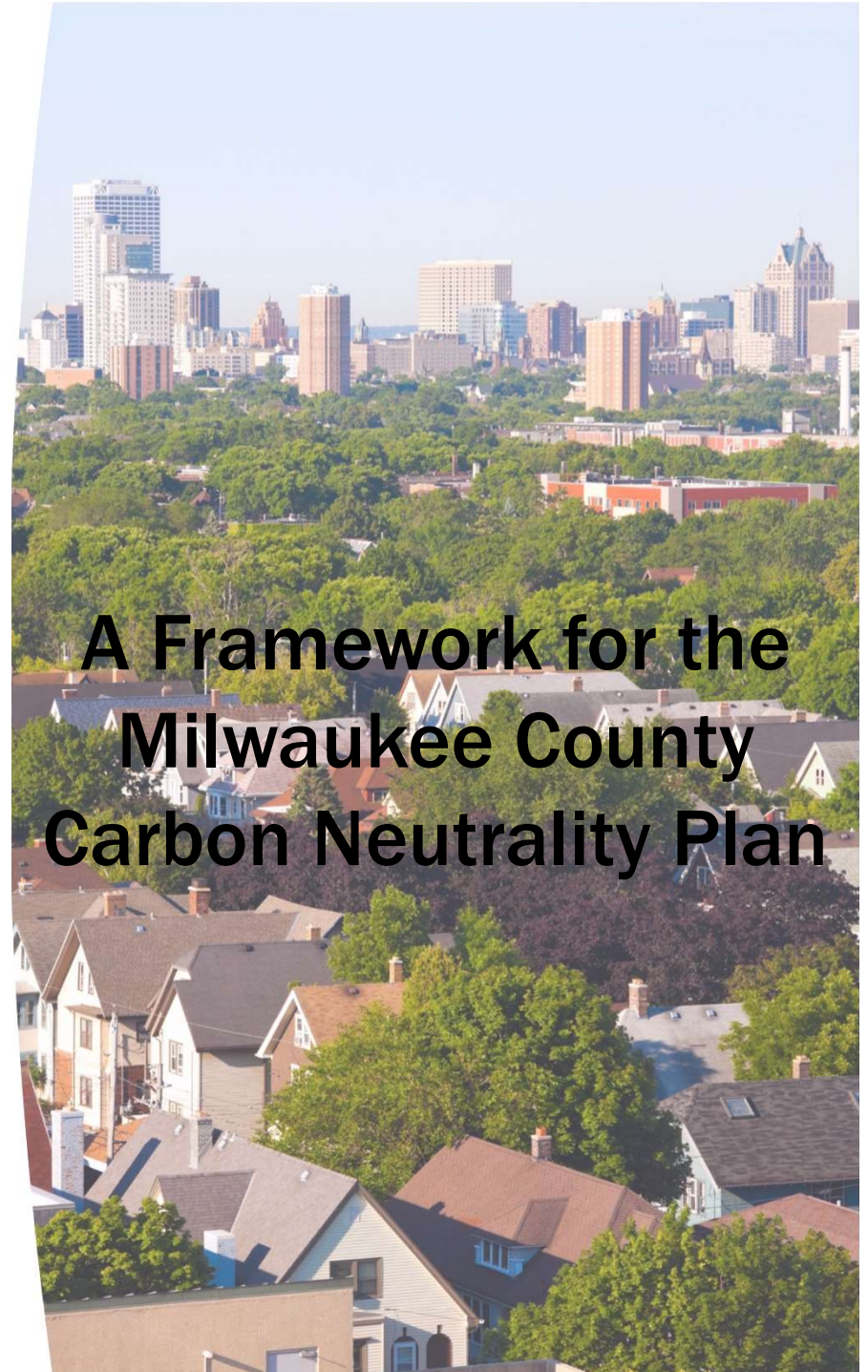
# Climate Action 2050

*Achieving Net Zero Carbon Emissions  
While Advancing Equity, Justice &  
Community Resilience*

---

September 7, 2021

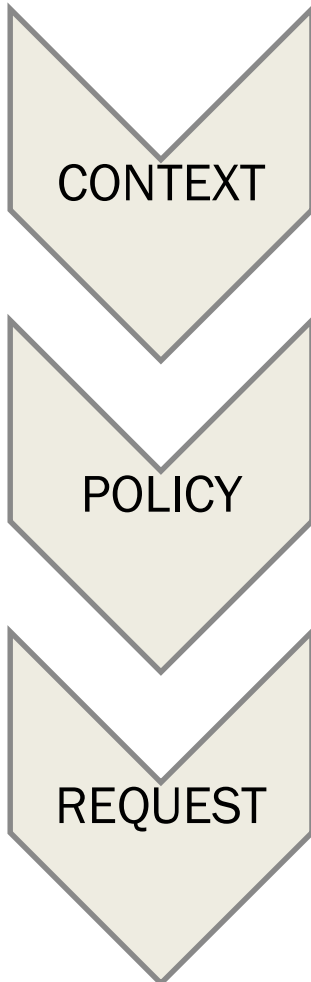
Presented by:  
Stuart Carron & Gordie Bennett  
DAS-Facilities Management



A Framework for the  
Milwaukee County  
Carbon Neutrality Plan

# 'Carbon Neutrality' Legislation

---

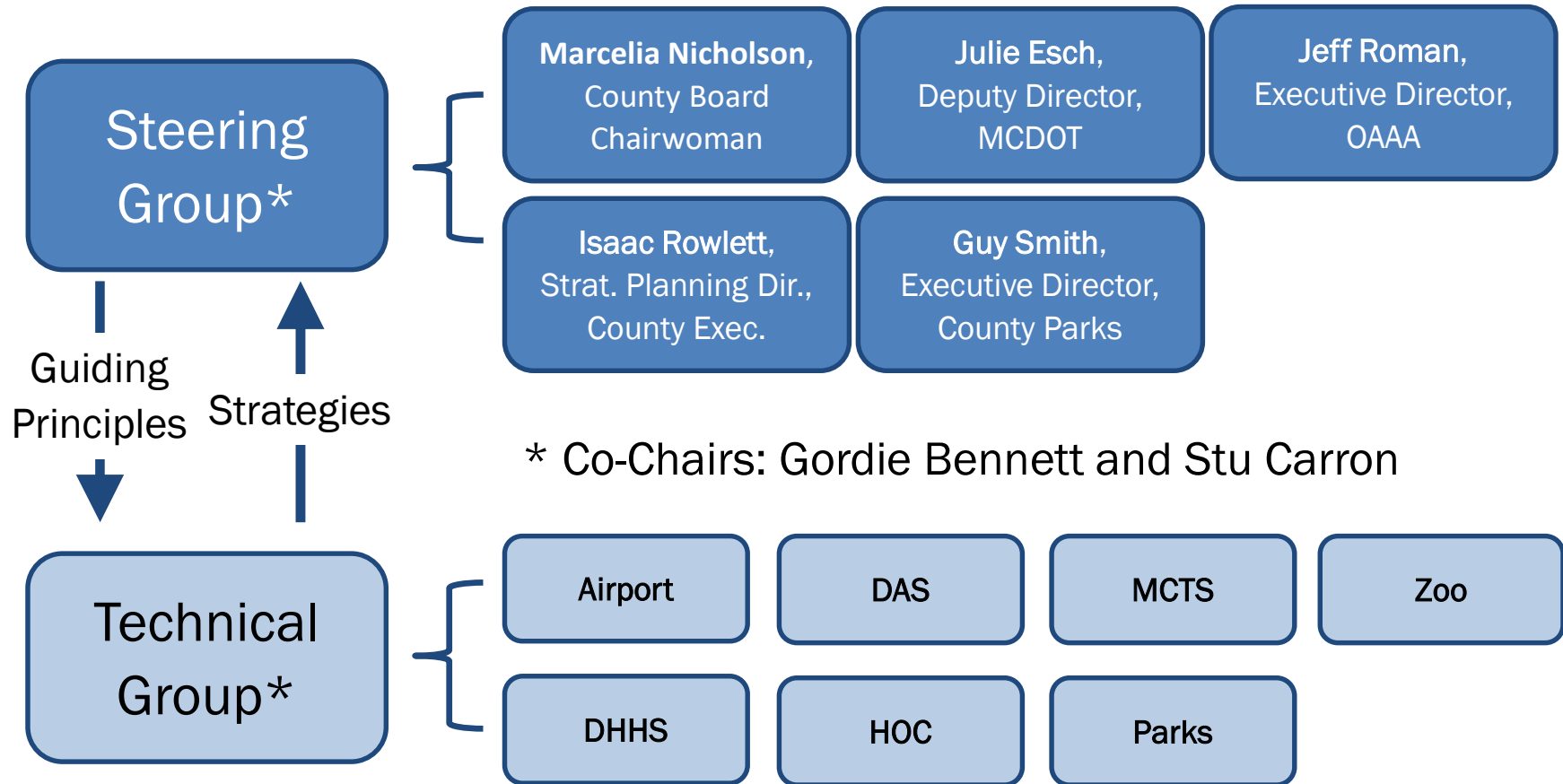


[File 21-389](#): Adopted Earth Day 2021, supports Milwaukee County's [commitment](#) to Paris Climate Agreement

County operations shall be carbon neutral (zero net emissions) by 2050.

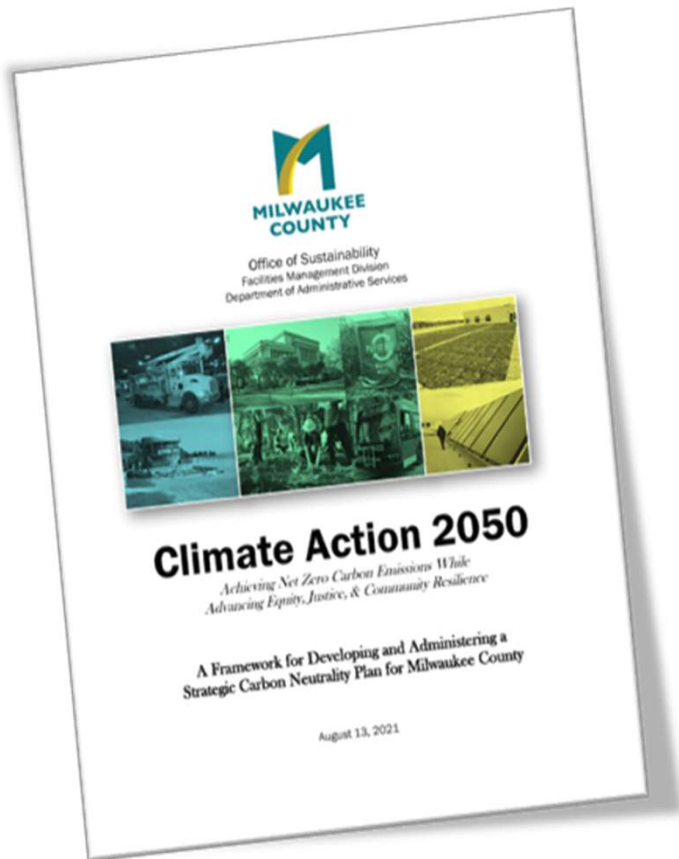
Working w/ County depts., Sustainability Director to develop framework for achieving carbon neutrality by Sept. 2021.

# Sustainability Task Force



# Carbon Neutrality Framework

---



- Creates Brand & Guiding Principles for carbon neutrality initiative
- Estimates baseline & 'Business as Usual' emissions
- Suggests strategies for mitigating emissions
- Includes lessons learned from other municipalities' plans
- Proposes next steps for carbon neutrality plan

# Brand & Guiding Principles

---

## *Climate Action 2050: Achieving Net Zero Carbon Emissions While Advancing Equity, Justice & Community Resilience*

### 1. Create Intentional Inclusion

1a. Identify and involve County Stakeholders & Partners

1b. Increase involvement of minority and woman-owned businesses

### 2. Bridge the Gap

2a. Identify health disparities caused by climate change & prioritize positive health outcomes

### 3. Invest in Equity

3a. Align w/ County's core functions, mission, & priorities

3b. Prioritize education & jobs for underserved communities

3c. Help vulnerable communities adapt to climate change

# Potential Co-Benefits

---



Community  
Engagement



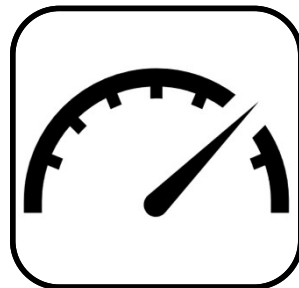
Community  
Bus. Dvmt.



Health



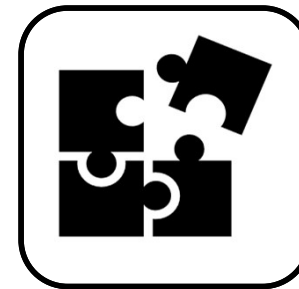
Fiscal  
Sustainability



Efficiency/  
Effectiveness

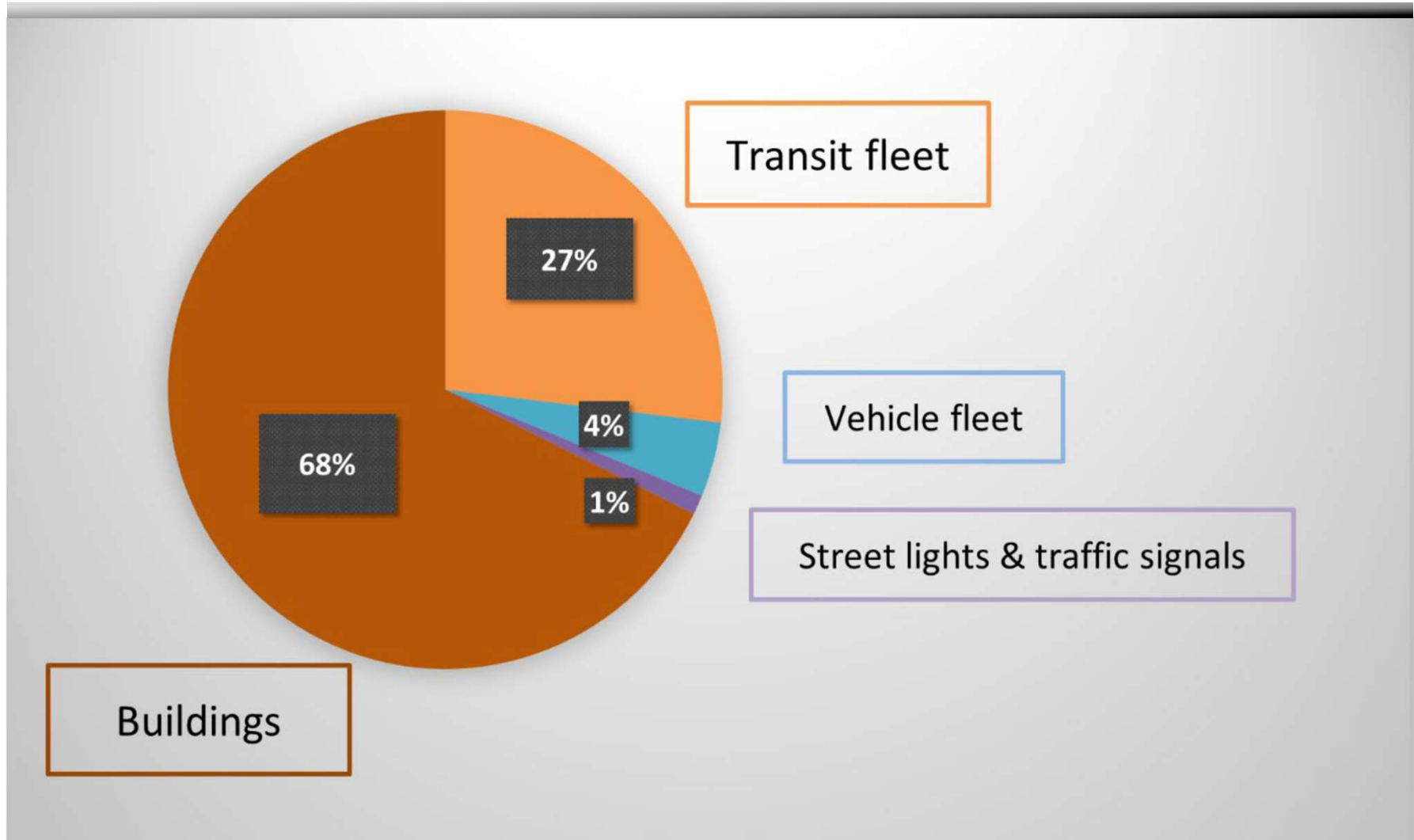


Jobs

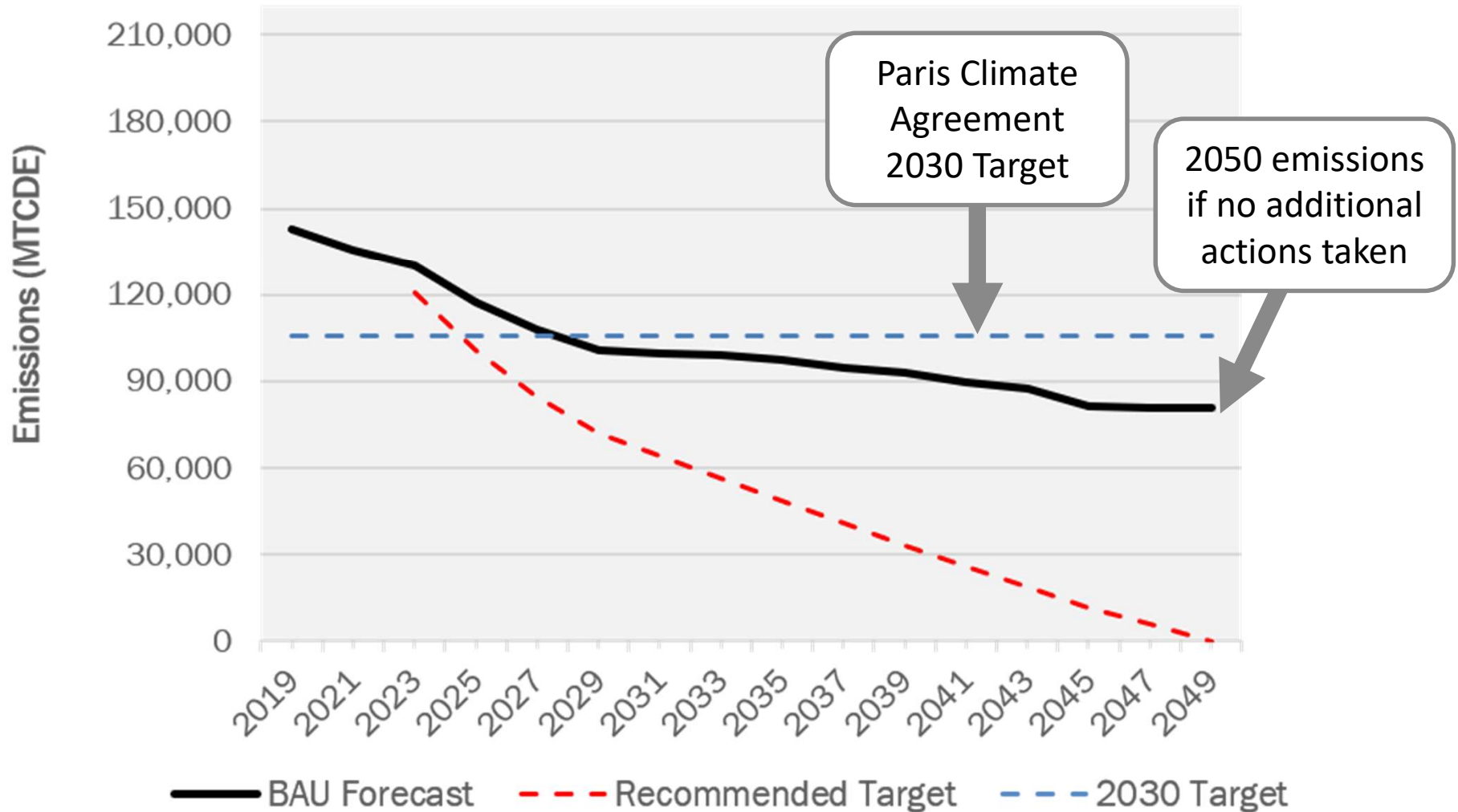


Resiliency

# Baseline Emissions



# 'Business as Usual' Emissions



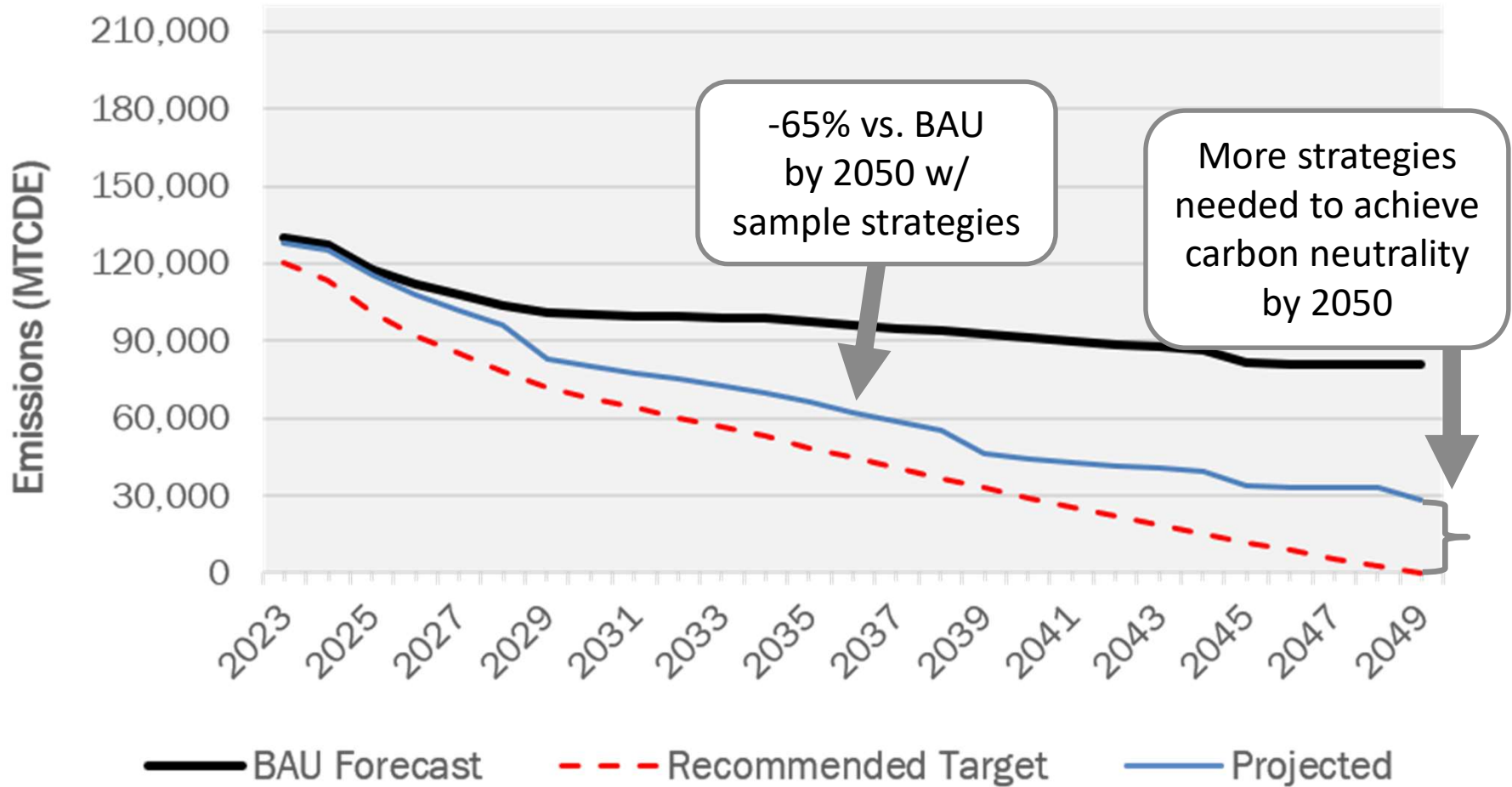


## Sample Strategies (Partial List)

#	Strategy	Emissions Reduced (MTCDE/yr)*	Total Co-Benefits
1	Replace 15 MCTS diesel buses with BEBs during 2022-23	525	2
2	After initial pilot of 15 buses (see #1), electrify remaining MCTS bus fleet by 2040	28,264	2
3	Reduce building energy use 15% per decade from 2020-50	15,955	3
4	Make Senior Centers and Community Centers 'net zero energy' by 2050	2,573	3
5	Maximize participation with We Energies Solar Now program	1,106	2
6	Install 2-MW ground-mounted solar PV system, location TBD.	937	3
7	Install solar PV at Oakwood Golf Course under We Energies Solar Now program	365	2

\* Maximum emissions reduced when strategy is fully implemented.

# Emissions Impact - Sample Strategies



# Challenges to Implementation

---

- Must align w/ County Vision & plan
- Lengthy planning horizon – by 2050:
  - Political leadership will change
  - County vision and strategy may evolve
  - Budget priorities may change
  - Technology will change
  - Department mission and priorities may change
- Dialogue and inclusion are critical

# Indianapolis Approach

---

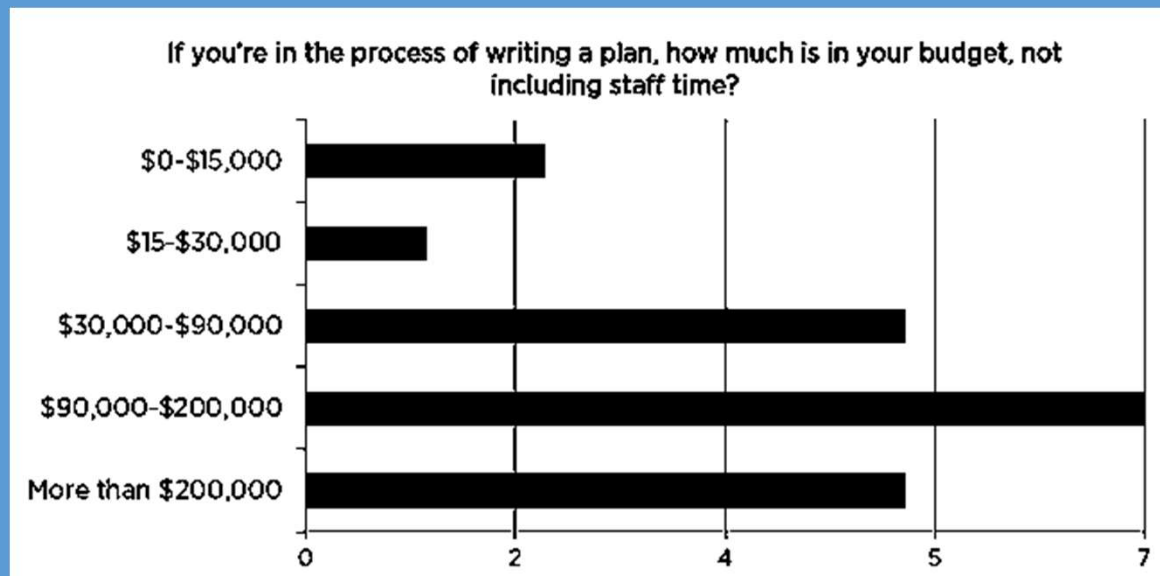


Treat emissions reduction as one of many beneficial outcomes that build a thriving, sustainable & resilient community.

# Next Steps – Climate Action 2050

Fund, organize, develop & implement a strategic carbon neutrality plan.

## Sample costs of community plans:



Source: Urban Sustainability Directors Network

# Contact Us

---

Stuart Carron, Director  
Facilities Management  
Dept. of Admin. Services

[Stuart.Carron@milwaukeecountywi.gov](mailto:Stuart.Carron@milwaukeecountywi.gov)

414-278-4940

Gordie Bennett, Director  
Office of Sustainability,  
Facilities Management

[Gordon.Bennett@milwaukeecountywi.gov](mailto:Gordon.Bennett@milwaukeecountywi.gov)

414-278-4837



By achieving racial equity, Milwaukee  
is the **healthiest county in Wisconsin.**

[county.milwaukee.gov/vision](http://county.milwaukee.gov/vision)