



**THE
ABILITY
CENTER**

Play together.

Universal Park

Project Update

Universal Park Overview

Building a more inclusive future at Wisconsin Avenue Park—a play and recreation space for people of all ages and abilities.

1. Park Entry and Clubhouse
2. Inclusive Play area
3. Explorer Trail
4. Accessible Play Pockets
5. Accessible Fitness Stations
6. Family Fitness Area
7. America's First Inclusive Challenge Course
8. Universal Ballpark

[View Flythrough Video](#)



Investment and Preparation to Date

Kahler Slater

\$7,500

Architectural Planning
Park Pavilion Design

GameTime

\$15,000

Park Design
Innovative Inclusion Planning

raSmith

\$28,435

Civil Engineering
Topographic Survey
Park Master plan

Hoppe Tree Service

\$32,500

Nature Preservation
Tree Survey and Study
Tree Preparation and Removal

TOTAL



Park Improvements and Community Outreach

Future Home of RampUp

- Staffed daily, increasing safety
- Revenue from concessions vendor

Adaptive equipment available for free rental

- Bikes
- Trail chairs
- Cross country skis

Total project cost: \$10MM



Committed!

Universal Ballpark

The three diamonds of Universal Ballpark will be the first of its kind.

People of all abilities, including Miracle League participants, Little League, High School and adaptive athletics, will gather for fun games, sports tournaments and community events.

Universal Field (adaptive)

Home Field (competition)



Fundraising Updates

\$2,500,000

George F. Moss Charitable Trust

\$500,000

YMCA of Metropolitan Milwaukee

\$100,000

Daniel M. Soref Charitable Trust



Park Naming

Renaming the Park:

- The current park name is based on the road where the park is located, Wisconsin Avenue
- A new name to reflect the universal nature of the park and exceptional contributions to the project is under consideration
- The proposal for renaming the park will follow the process as adopted in File No. 21-922 and published in the Milwaukee County Code of General Ordinances under Section 47.37



Public Input Meetings

Planning in Progress

Meetings scheduled with:

- Neighboring community partners
- Community leaders

Goals

- Community awareness and buy-in

Scheduling

- 2-3 meetings in/around April
- **Date** **Host** **Location**
- **Date** **Host** **Location**
- **Date** **Host** **Virtual**



Save the Date: July 26, 2023

Ceremonial Groundbreaking

Join Us

The Americans with Disabilities Act (ADA)
was signed into law on July 26, 1990



Our Partners



Community Committee

Chris Prange-Morgan Adaptive Athlete

Mike Bonk Director
Milwaukee County Office for Persons with Disabilities

Guy Smith Executive Director
Milwaukee County Parks

Vera Westphal Deputy Zoo Director
Milwaukee County Zoo

Jeff Wilkens
Clinic Director/Clinical Assistant Professor
Marquette University Department of Physical Therapy

Katie Helmeid Occupational Therapist
Assistive Technology Professional

Bridget McNair Research and Life Enrichment Director
St. Camillus

Deb Falk-Palec Chairwoman
Milwaukee County Office for Persons with Disabilities

Jeremy Lucas Director of Administration & Planning
Milwaukee County Parks

Jen Multerer-Smith Recreational Therapist
Rogers Memorial Hospital

Kim DeChant Clinic Coordinator, PT
Marquette University Neuro Recovery Clinic

Michele Sheehan Clinical Assistant Professor
Marquette University College of Health Sciences

Chelsea Budde Executive Director
Good Friend, Inc.

Freddy Hoppe Board Certified Master Arborist
Hoppe Tree Service

Margaret Chaidez Project Manager
Play Illinois Park & Playground

Tom Mortensen
Site Planner/Landscape Architect, Project Manager
raSmith

David Mortensen Project Manager, Civil Engineer
raSmith

Jessica Greb Director of House Operations
Ronald McDonald House Charities

Elizabeth Poetsch Former Wauwatosa Educator
The Ability Center Volunteer

Jim Hoefgen League Director
Tosa Baseball

Barry Waddell Executive Director
The Park People

Bridget Kesner Director of Philanthropy
Ronald McDonald House Charities

Nick Putz Marketing & Advertising
Wangard Partners

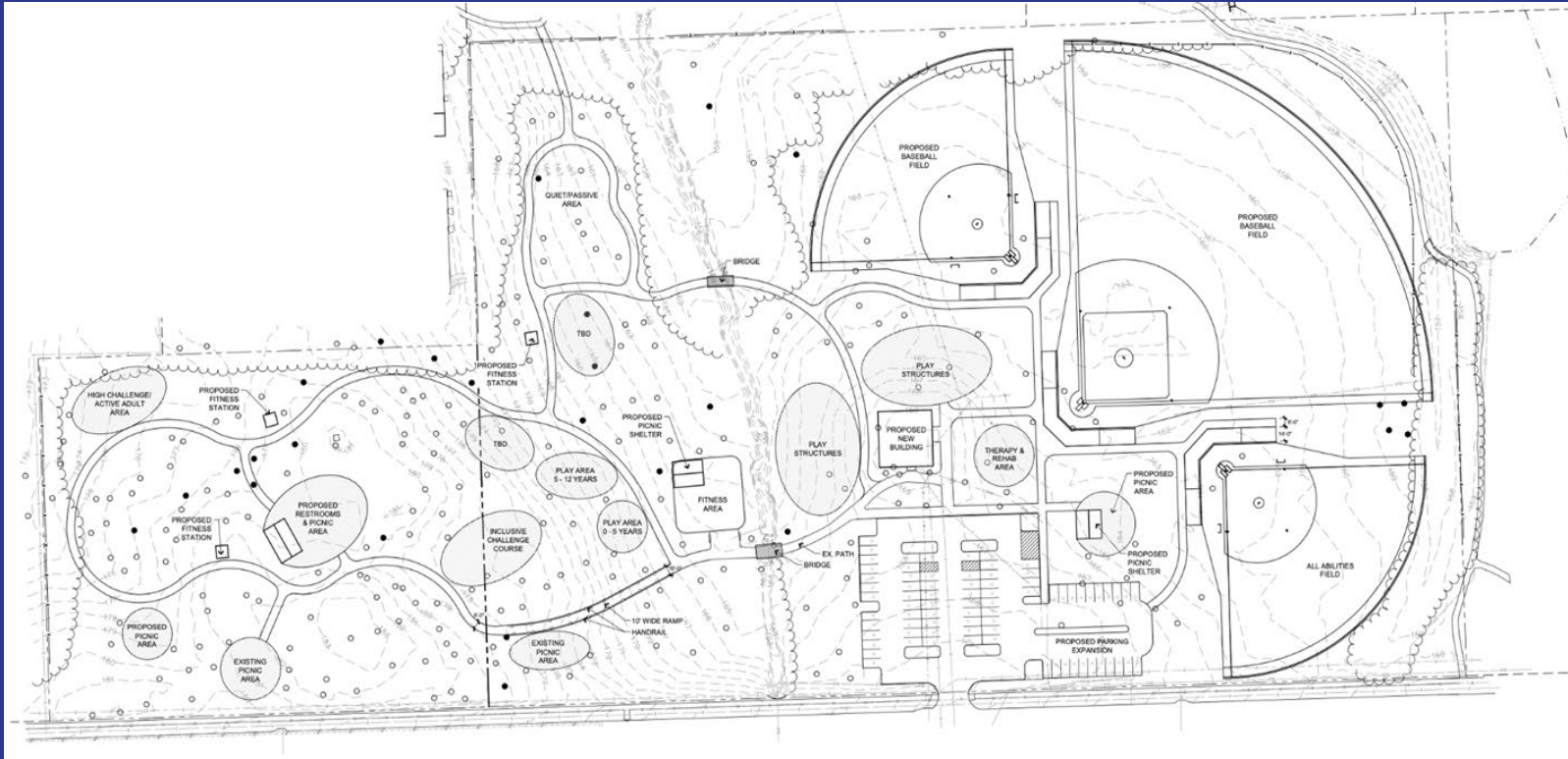
Leila Wright Senior Executive Mission Advancement
YMCA of Metropolitan Milwaukee

Carrie Wall CEO
YMCA of Metropolitan Milwaukee

Teddy Werner Advisory Committee Chair
Miracle League of Milwaukee



Universal Park Layout Overview



10300 W. WISCONSIN AVE. WAUWATOSA, WI		raSmith CREATIVITY BEYOND ARCHITECTURE		18245 WI Milwaukee Blvd Brookfield, WI 53005-5938 (262) 781-1000 raSmith.com		Brodfield, WI Milwaukee, WI Appleton, WI Madison, WI Coltsville, WI Neenah, IL Irons, CA	
MASTER PLAN WISCONSIN AVENUE PARK						DESCRIPTION	
DATE	#	#	#	#	#	#	#

Universal Park Master Plan